

# DS620/620A iSerial Enable Tool

The DS620/620A iSerial Enable Tool is used to enable the iSerial functionality within the DS620/620A printer firmware. This facilitates proper functionality with the Mac driver for OS-X 10.9.4 and later.

## Enabling iSerial Functionality

To enable the iSerial functionality with your DS620/620A printers:

1. Connect and turn your DS620/620A printer(s) on.



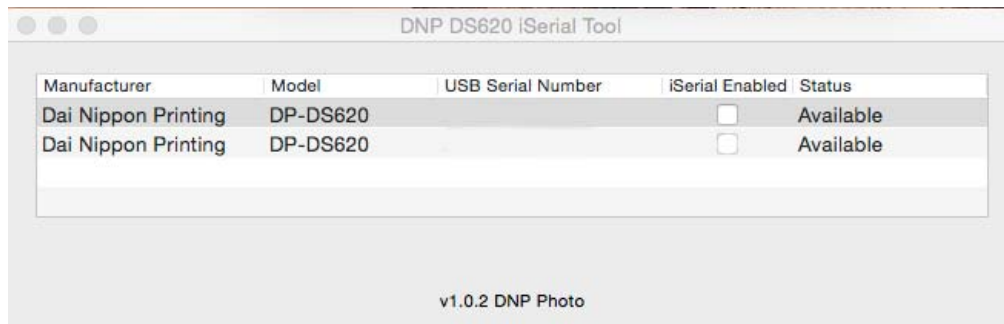
### Attention

Your printer(s) must be powered on for the tool to recognize/update them. The iSerial Enable Tool can recognize up to five (5) DS620/620A printers simultaneously. You may use the iSerial Enable Tool with or without having the Mac driver installed.

2. Unzip the iSerial Enable Tool.



3. Once unzipped, double-click the tool's icon.
4. Upon opening, the tool is populated with information associated with your printers, including the USB Serial Number of your DS620/620A printer(s) and whether the iSerial functionality is enabled/disabled. The USB Serial Number will not appear if the iSerial functionality is not enabled.



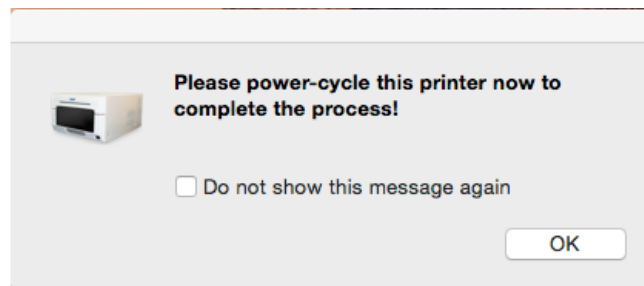
5. If your printers are not already enabled, select the **iSerial Enabled** checkbox for each printer.



### Note

Before selecting the **iSerial Enabled** checkbox, your printer(s) must be available, i.e. not printing images, etc. To verify that your printer is available, check the **Status** column in the iSerial Enable Tool.

6. Upon selecting the **iSerial Enabled** checkbox, you are prompted to reboot your printer(s). Turn your DS620/620A printer off, and then turn it back on. Then click **OK** on the dialog box.



7. Repeat steps 5 and 6 for each printer.

### Note

If you deselect the **iSerial Enabled** checkbox, the iSerial functionality is disabled for the associated printer.

8. Once the appropriate changes have been made, close the iSerial Enable Tool before sending images to the printers.