

New color profiles have been created to use with the DS-Series and RX-Series printers. Use this instruction sheet to install the files on Windows® 7, Windows 8, Windows XP, and Mac OS operating systems.

### In this Document...

Section A. Updating Windows 7 or Windows 8 .....	1
Section B. Installing the Profile in Mac OS v10.4 and Newer .....	6
Section C. Installing the Profile in Windows XP .....	7

## Section A.

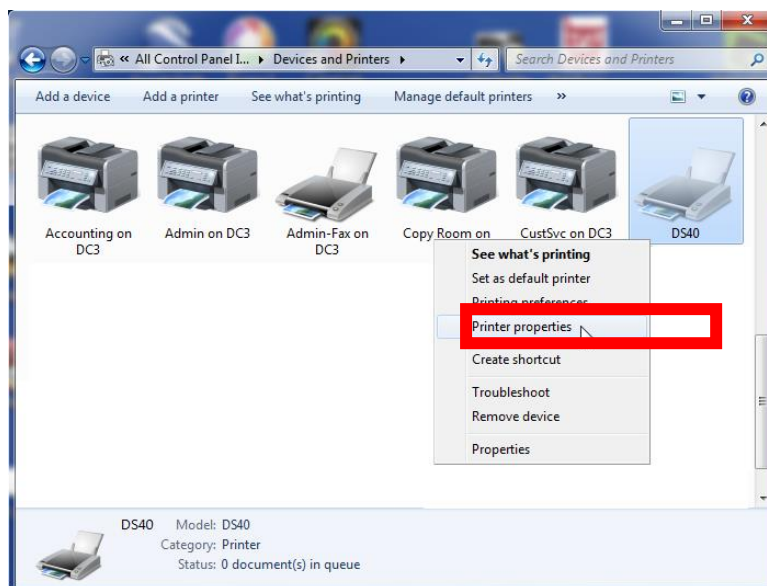
### Updating Windows 7 or Windows 8

#### NOTE:

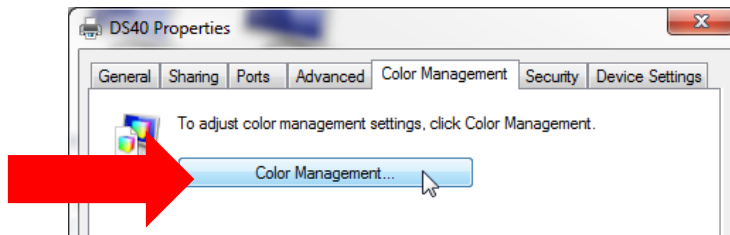
The images used in this section are from a Windows 7 system and are for reference only. Use the same steps to add the new color profiles to a Windows 8 system.

Printer	ICM Name
<b>DS40 Printer</b>	DS40_20140228.icm
<b>DS80 Printer</b>	DS80_20140228.icm
<b>RX1 Printer</b>	RX1_20140228.icm

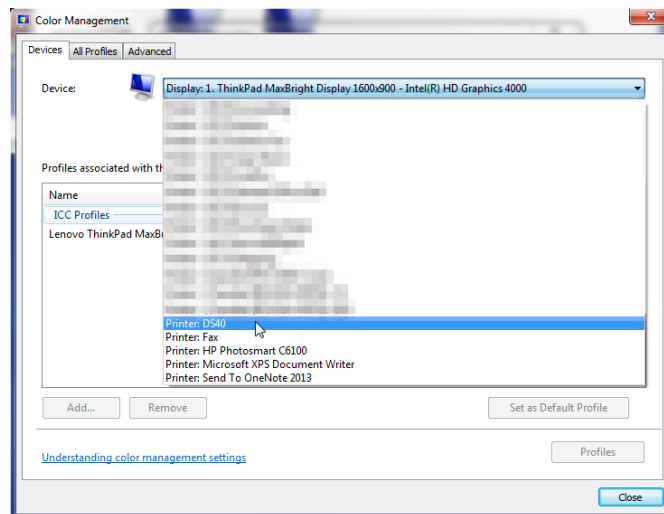
1. Copy the ICM file and paste it in the following location:  
Windows > System32 > Spool > Drivers > Color
2. From the control panel or the Start menu, locate the Devices and Printers option.
3. When the Devices and Printers window opens, locate your printer and right-click on the desired printer.
4. Select **Printer Properties** from the drop-down menu.



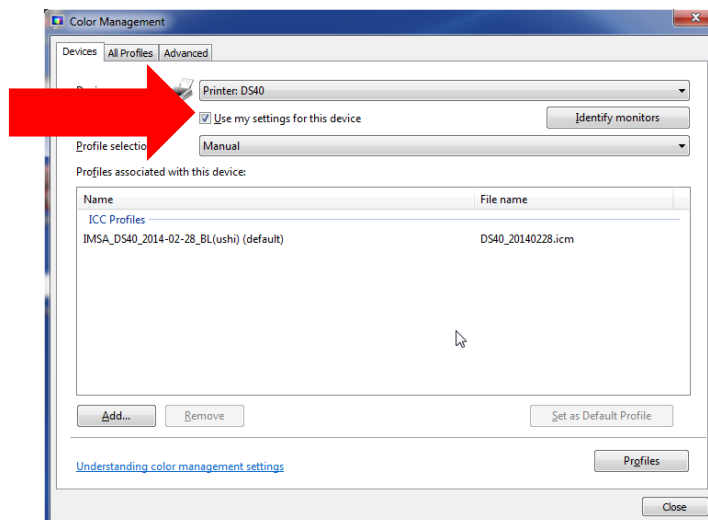
- From the Printer Properties menu, select the **Color Management** tab, then click the **Color Management** button.



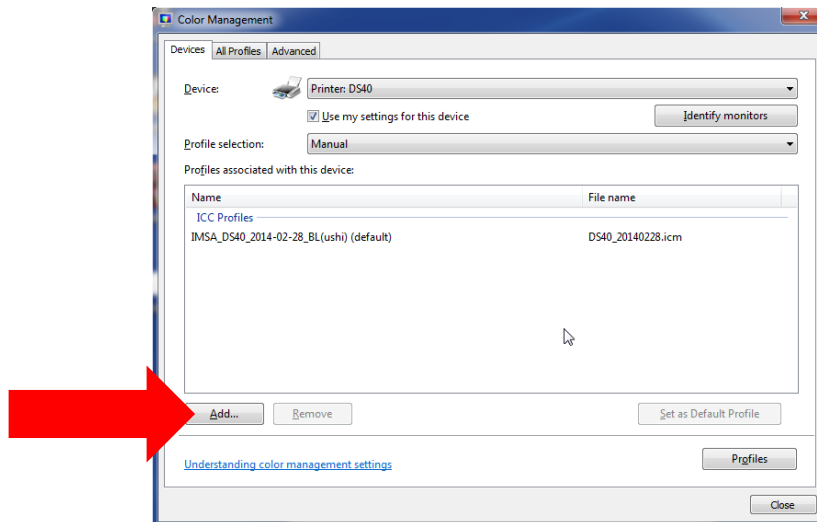
- Select your printer from the **device** drop-down list.



- Verify that Use my settings for this device is **checked** and that Profile selection is set to **Manual**.



8. Click the **Add** button under the *Profiles associated with the device* section.



9. From the list of available ICM files, select the correct ICM file, and click **OK**.

---

**ATTENTION:**

Make sure you are loading the correct ICM for your printer (DS40, DS80, and RX1).

If you followed the instructions in step 1 on page 1, your new ICM profile is located in the following directory:

Windows > System32 > Spool > Drivers > Color

---

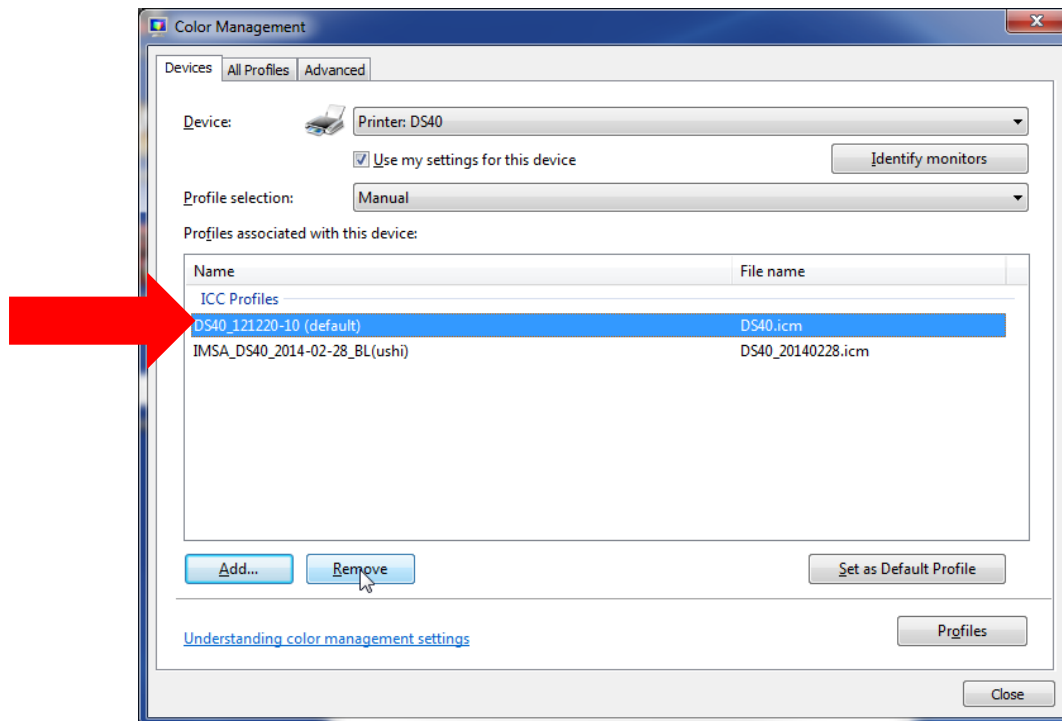
10. Verify that the new ICM is displayed under the *Profiles associated with the device* section. Do this by checking that the ICM file name matches the printer ICM name in the chart at the beginning of this section (shown with a red arrow in the image below).

---

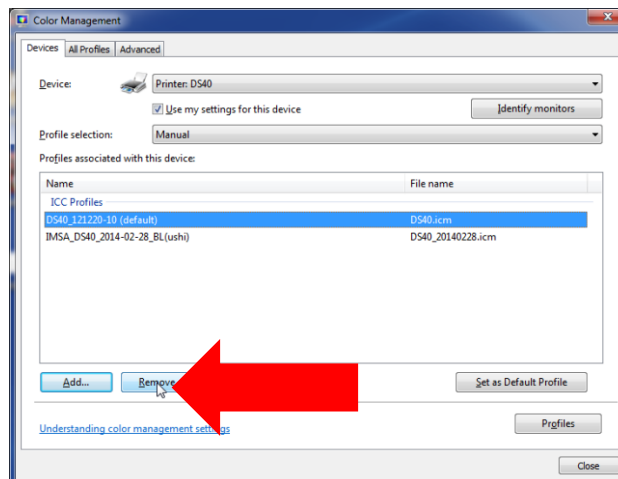
**NOTE:**

The old ICM file will still be designated as the default ICM at this point (highlighted in blue in the image below).

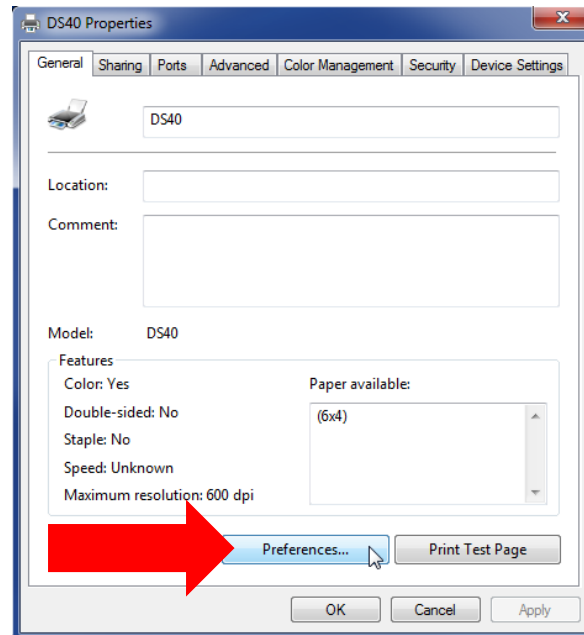
---



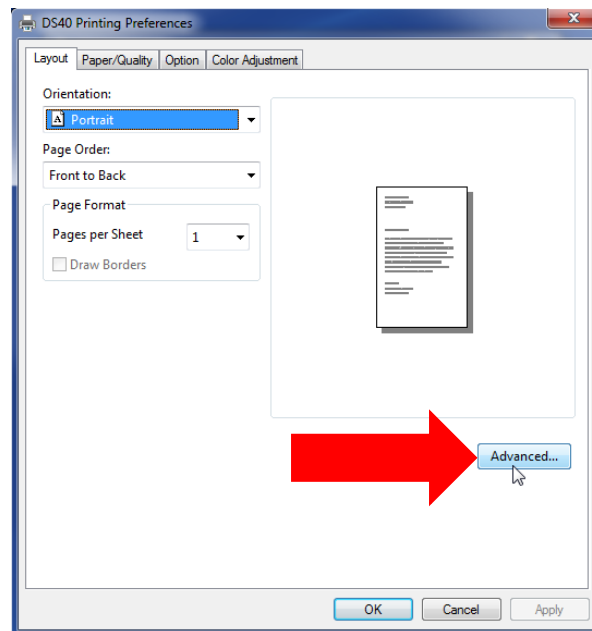
11. Once you have verified the new profile is loaded, click the **old profile** to select it, then click **Remove**.



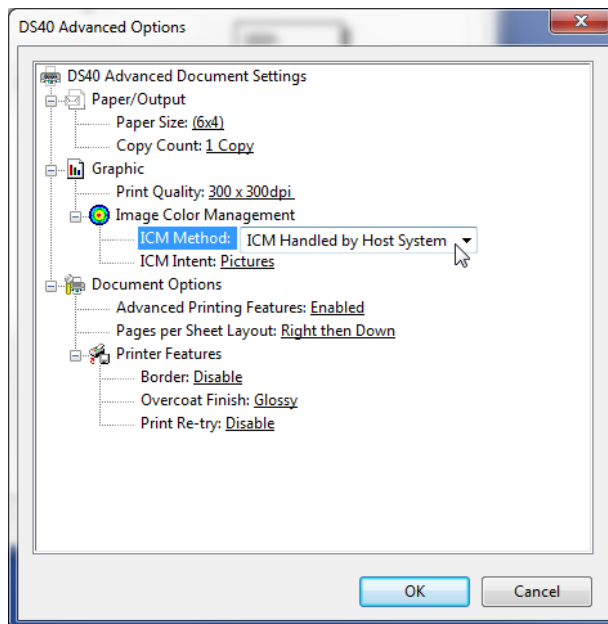
12. The newly loaded ICM profile is now the default profile. If you do not see “(default)” next to the profile name, select the profile, then press the **Set as Default Profile** button.
13. Close the Color Management window by pressing the **Close** button in the lower right corner of the window.
14. Click on the **General** tab in the Printer Properties window and click the **Preferences...** button



15. On the Layout tab, click on the **Advanced** button.



16. In the Advanced Options window, locate the Image Color Management option and select **ICM Handled by Host System**.



Printer	ICM Name
<b>DS40 Printer</b>	DS40_20140228.icc
<b>DS80 Printer</b>	DS80_20140228.icc
<b>RX1 Printer</b>	RX1_20140228.icc

17. Close any open system windows.

**Repeat these instructions for the any other printers before rebooting the computer.**

## Section B. Installing the Profile in Mac OS v10.4 and Newer

- Copy the ICC file and paste it in the following location:  
Mac HD > Library > Colorsync > Profiles > Profiles
- Your ICC profile is now ready for use in any of your software applications that require an ICC profile.

### NOTE:

If you are using a newer version of Mac OS, you may need to enter your administrator password to install a new color profile.

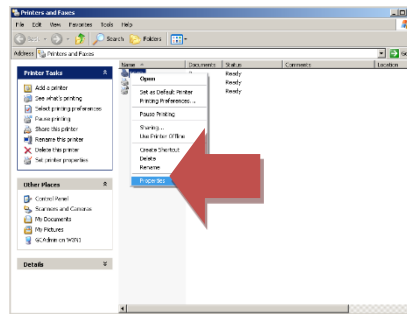
3. Close any open system windows.

**Repeat these instructions for the any other printers before rebooting the computer.**

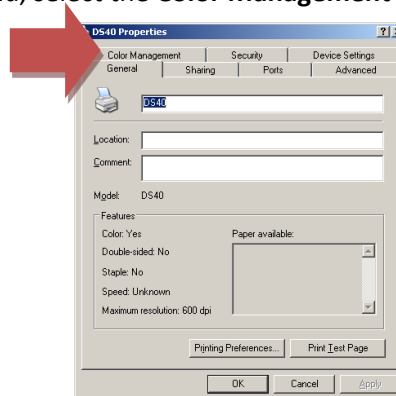
### Section C. Installing the Profile in Windows XP

1. Copy the ICM file and paste it in the following location:  
Windows > System32 > Spool > Drivers > Color
2. From the Printers and Faxes folder, right-click on the desired printer, and select **Properties** from the drop-down list.

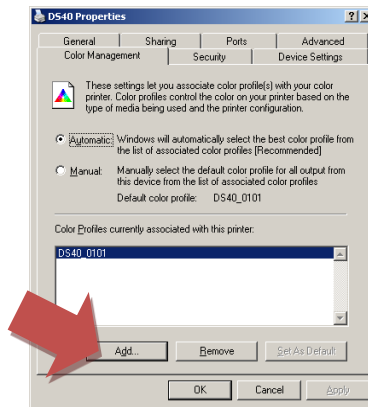
Printer	ICM Name
<b>DS40 Printer</b>	DS40_20140228.icm
<b>DS80 Printer</b>	DS80_20140228.icm
<b>RX1 Printer</b>	RX1_20140228.icm



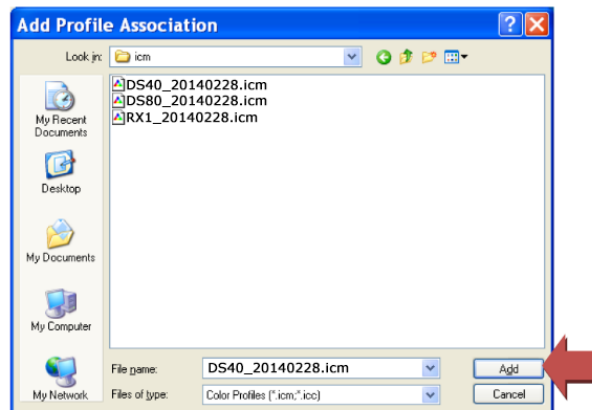
3. From the Printer Properties menu, select the **Color Management** tab.



- On the Color Management tab, under the *Color Profiles currently associated with the printer* section, click the **Add** button.



- The default folder for saved ICM files opens. Browse to the new ICM file you saved in the following directory:  
Windows > System32 > Spool > Drivers > Color
- When you have selected the correct ICM profile, click **Add**.



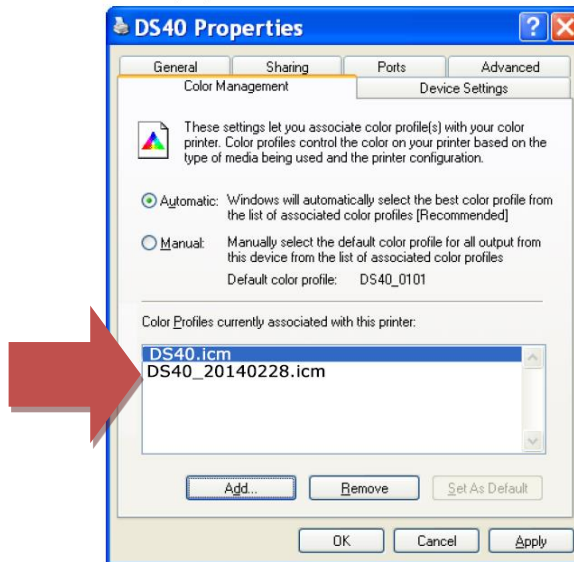
### ATTENTION:

Make sure you are loading the correct ICM for your printer (DS40, DS80, or RX1).

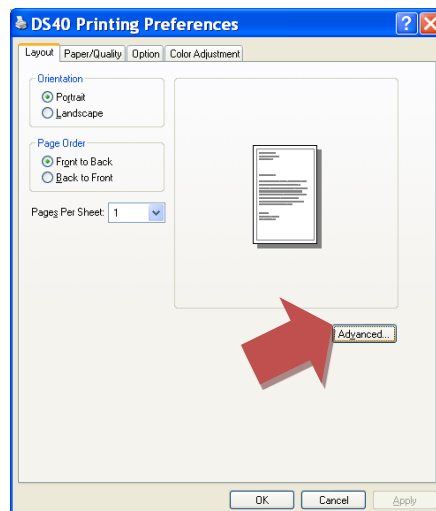
If you load the wrong profile, select the incorrect profile on the **Color Management Tab**, and click **Remove** before adding the correct profile.



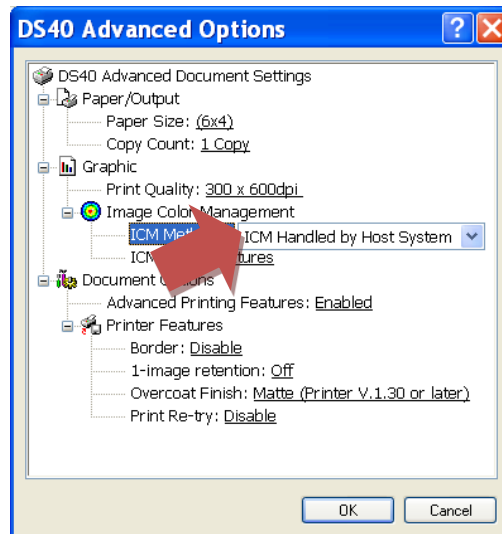
- Verify that the new ICM is displayed under the *Color Profiles currently associated with the printer* section (shown with red arrow).



- Once you have verified the new profile has been loaded, click on the **old profile** to select it and click **Remove**. Your new profile is now the default profile.
- Click the **General** tab in the Printer Properties window to open the General Properties tab. Click **Printing Preferences**.
- From the Printing Preferences window, verify that the Layout tab is selected.
- Click the **Advanced** button.



12. In the Advanced Options window, locate the **Image Color Management** option.
13. Make sure that **ICM Handled by Host System** is selected.



14. Close any open system windows.

**Repeat these instructions for the any other printers before rebooting the computer.**