

DS 40 AND DS620A: USING L-SPACERS FOR 5x7 MEDIA

Overview

The paper spools that ship with the DS40 and DS620A are for 4x6 roll paper which is six inches wide. Spacers are required for 5x7 roll paper which is five inches wide. Each spacer is ½ inch wide. One spacer goes on each paper spool so that the paper will fit into the printer and feed correctly.

How to Use the L-Spacers



Original 4x6 Paper Spool



L-Spacer (Must be 2 of these)

1. Slide each L-Spacer onto each paper holder.



Spacer on paper holder, not pushed all the way into position.

How to Use the L-Spacers

- Slide the spacer onto the paper holder until it is flush with the underside of the paper holder.



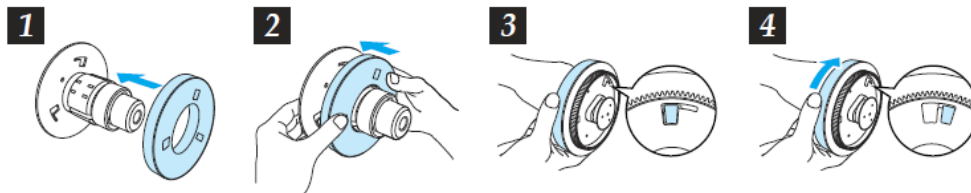
L-spacer installed correctly.

- Push both paper holders into a roll of 5x7 paper.



5x7 media loaded on paper holder with L-Spacers.

- The DS620A L-spacer is locked into place by matching up the holes in the spacer with the tabs on the paper holder and twisting.



Note: It is very important to still make sure the spindles are flush with the paper to avoid white lines on edge of prints.

End of Using Spacers with 5x7 Paper.

Revision Info

Date	Initials	Description	Revision
2.18.2016	CCS	Changed copyright to 2016. Removed false PN and REV numbers. Updated Heading 1 leading. Added new pink logo.	
7.13.2016	MMH	Added Revision column to Revision Info table & removed PN from footer.	
11.3.2016	MMH	Content revised and correct format used.	2.0
12.13.2017	MMH	Reviewed by InfoDev. Ready for website publish.	2.1