

Update tool for DS40 Firmware and Color-control Data

2017.04.24

Dai Nippon Printing Co., Ltd.



The copyrights for this document are the property of the holders of rights.



The contents of this document may be changed without prior notice.

This is an explanation for the DS40 Version Up Tool, to update the printer's firmware and color control data.

< Contents >

1. DS40 Version Up Tool Execute File Names.....	1
2. Running DS40 Version Up Tool.....	2
3. DS40 Version Up Tool Window Explanation	4
4. Starting the Update	5
5. Finishing the update.....	6

1. DS40 Version Up Tool Execute File Names

The DS40 Version Up Tool has a specific execute file for each version to be updated.

The execute file names provided with the DS40 Version Up Tool this time, and their corresponding update firmware and color control data versions are shown below.

	For 32bit OS	For 64bit OS
Folder	\\DS40_0161_Win32	\\DS40_0161_Win64
DS40 Version Up Tool Execute File Name	DS40_0161x86_Direct.exe	DS40_0161x64_Direct.exe
Firmware Version	DS40 1.61 (Data File Name DS40_0161.S)	
Color Control Data Version and Checksum ()=Data File Name	DS40_300_0161.CWD 700F (DS40_300_0161.cwd) DS40_600_0161.CWD 87B8 (DS40_600_0161.cwd)	
DLL file to use	cspstat.dll	cspstat64.dll

When executing, select all the files of one of the above shown folders according to OS environment of use, and save into one folder.

(The firmware and color control versions shown in the following explanations differ from that provided at this time.)

2. Running DS40 Version Up Tool

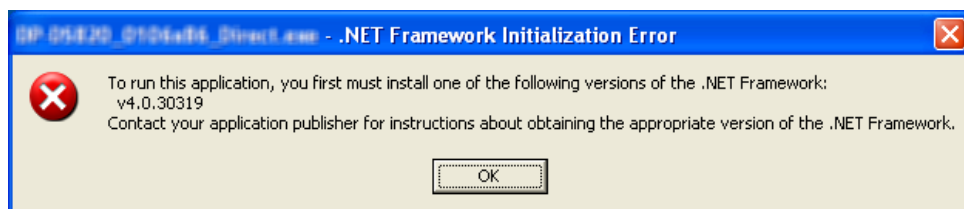
To begin with, turn on the printer and connect it to the host computer with the USB cable.
Set the paper and ribbon into the printer, close the cover, and make sure there is no error (Printer LED is green).

Run the DS40 Version Up Tool execute file (*.exe).

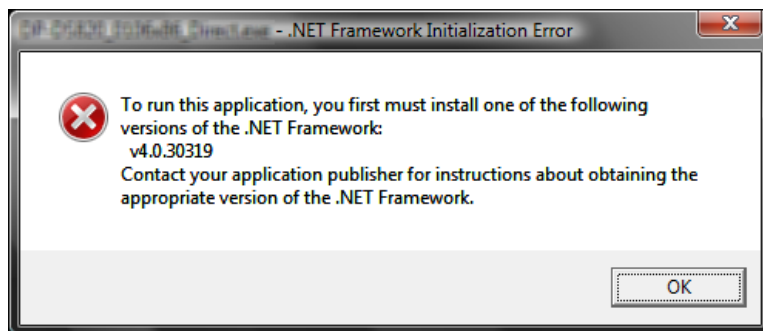
Note) For supporting 32/64bit OS, this Version Up Tool is an application which use .NET Framework.

When the start of this tool by XP/Vista/7 and the following message are displayed, it is necessary to install Microsoft.Net Framework. (In Windows 8 and later, the .Net Framework is installed by the standard.)

<Windows XP>



<Windows Vista / 7>

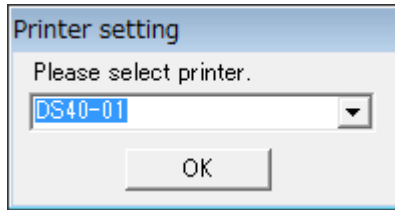


.Net Framework can be downloaded from following URL. The version that can be used is different depending on each OS. Details are described in URL. (This URL is a thing as of April 2017)

- .Net Framework 4 download (Windows XP and later)
<https://www.microsoft.com/net/download/framework> (English)

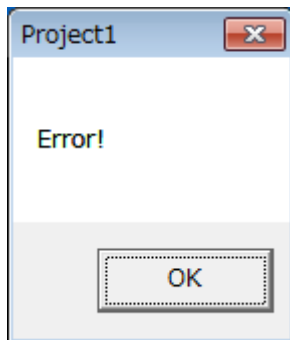
When running DS40 Version Up Tool, if there are multiple printer ports, the following printer select window will open.

Select the appropriate printer, and click “OK”.



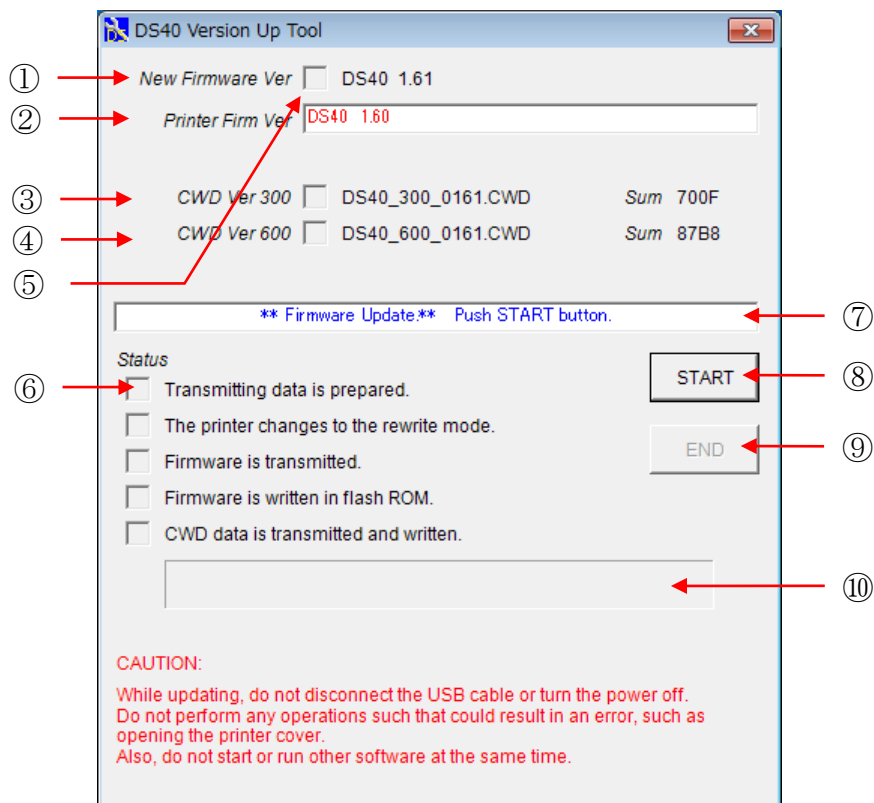
If there are no printer ports, the following confirmation window will open.

After checking that power is on and the USB is connected, click “OK” to start the process again.



3. DS40 Version Up Tool Window Explanation

Once DS40 Version Up Tool is running, the following window will open.

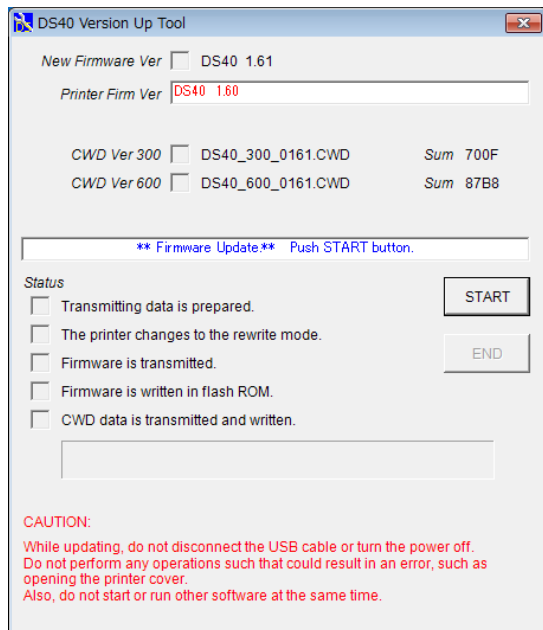


DS40 Version Up Tool Window

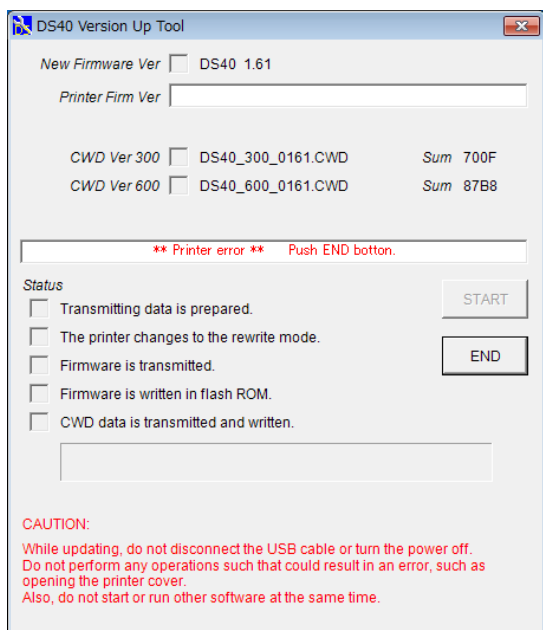
- | | |
|--------------------|--|
| ① New Firmware | This displays the new firmware version that will be used in the update. |
| ② Printer Firm Ver | This displays the printer's current firmware version.
If it differs from the new version, it will be displayed with red letters. |
| ③ CWD Ver 300 | This displays the new color control data (300 dpi resolution) version and checksum value (Sum) to be updated.
When the update is complete, the Sum value will be displayed in blue. |
| ④ CWD Ver 600 | This displays the new color control data (600 dpi resolution) version and checksum value (Sum) to be updated.
When the update is complete, the Sum value will be displayed in blue. |
| ⑤ Check Box | This box will have a check if the new firmware or color control data has already been written to the printer, or if the update has been completed. |
| ⑥ Status | This checks the progress status for the update. |
| ⑦ Indicator | This shows the printer's current status, and the application operating command. |
| ⑧ START | Update start button
Clicking this button starts the update. |
| ⑨ END | End the update. |
| ⑩ Status Bar | Displays the progress status for the update. |

4. Starting the Update

On the DS40 Version Up Tool window, click the “START” button to begin the update.



When starting the update, if the printer has error, the following printer error will be displayed. The same error will be shown if the USB cable is disconnected or the power is off.

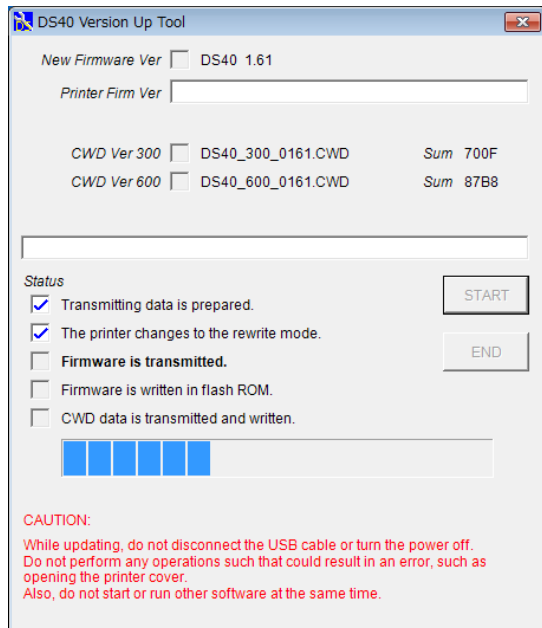


Printer Error

If there is an error, click “END” or close the window to stop DS40 Version Up Tool, fix the error, be sure there are no errors (printer LED is green), and run DS40 Version Up Tool again.

If the USB cable was disconnected or the power was off, check that the USB cable is connected and the power is turned on.

When you click “START” and start the update, the window display will change to the following, and you can check the update progress status.



! Notice !

While updating, do not disconnect the USB cable or turn the power off.

Do not perform any operations such that could result in an error, such as opening the printer cover.

Also, do not start or run other software at the same time.

When the printer enters the rewrite mode, the LED will change from green to flashing green.

When the firmware update is complete, the printer’s buzzer will beep, the new firmware will be run automatically, and the color control data update will begin.

5. Finishing the update

When all the updates are complete, the window display will look like the following.

Also, the printer LED will revert from flashing green to green.

Confirm the New Firmware and New CWD Ver boxes are checked, and click the “END” button or close the window to end DS40 Version Up Tool.

When all the updates are completed, reboot the host computer.

When the host computer is not rebooted, the new function might not be able to be used.

Confirmation

