

TECHNICAL BULLETIN: DRIVER INSTALLATION GUIDE FOR DNP DS620A PRINTER

Overview

The Driver Installation tool allows you to quickly update the drivers for all your DS-Series printers. The Driver Installation tool is compatible with Windows 7, 8 and 10.

Installing DS620A Driver version 1.0.5.1

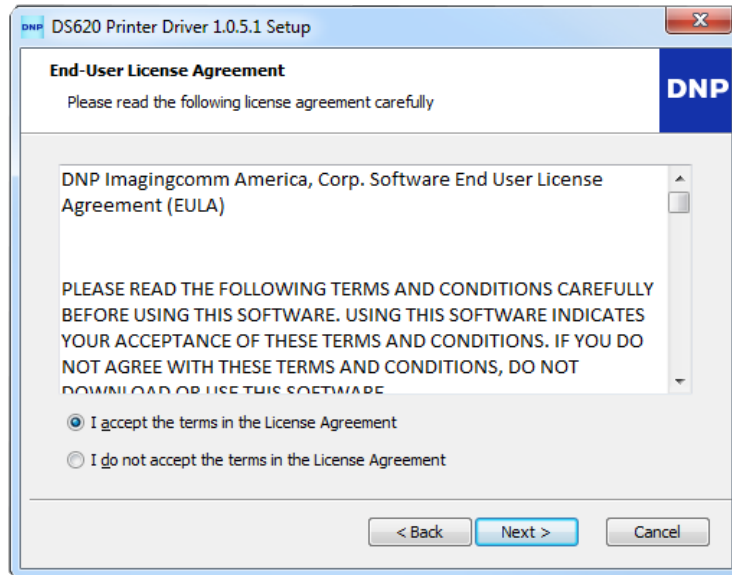
Use the following instructions to install the DS620A Driver:

1. From your browser, navigate to the following site: <http://dnpphoto.com/Support/Downloads>
2. Download the appropriate driver for your DS-Series printer.
3. Navigate to the location where you downloaded the file. Double-click the **DS620 Printer Driver 1.0.5.1** application file.

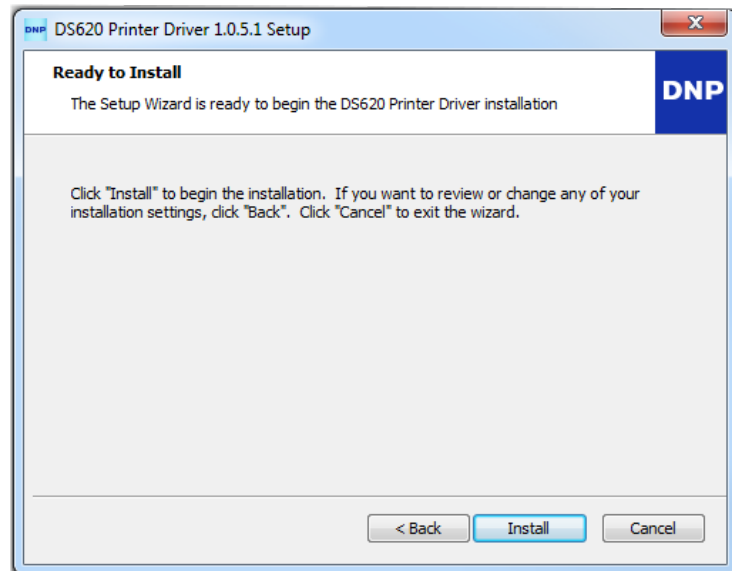


4. Click the **Next** button.

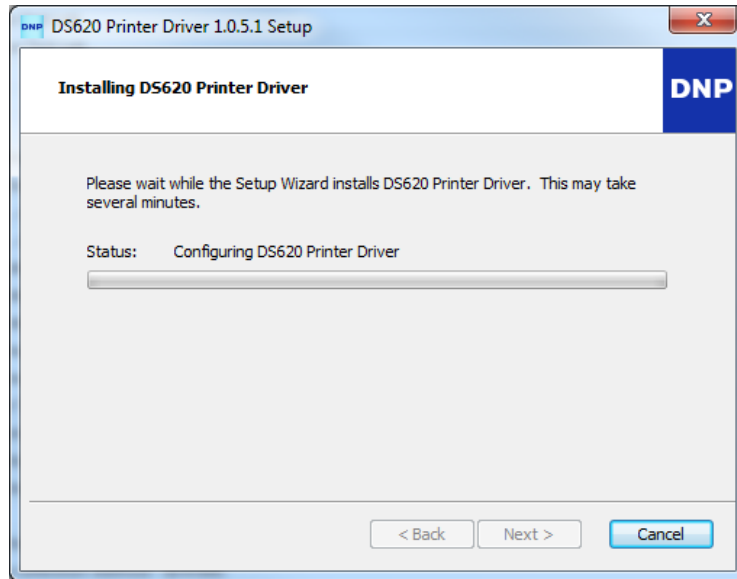
- 5. From the End-User License Agreement screen, select the **I accept the terms of the License Agreement** radio button and then click the **Next** button.



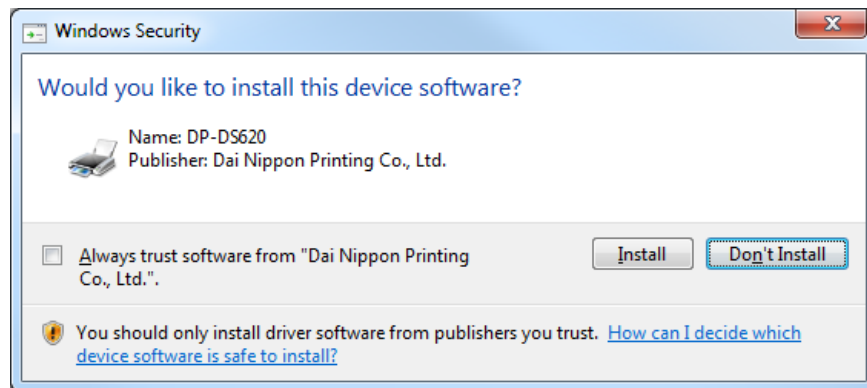
- 6. Click the **Install** button to begin the Installation process.



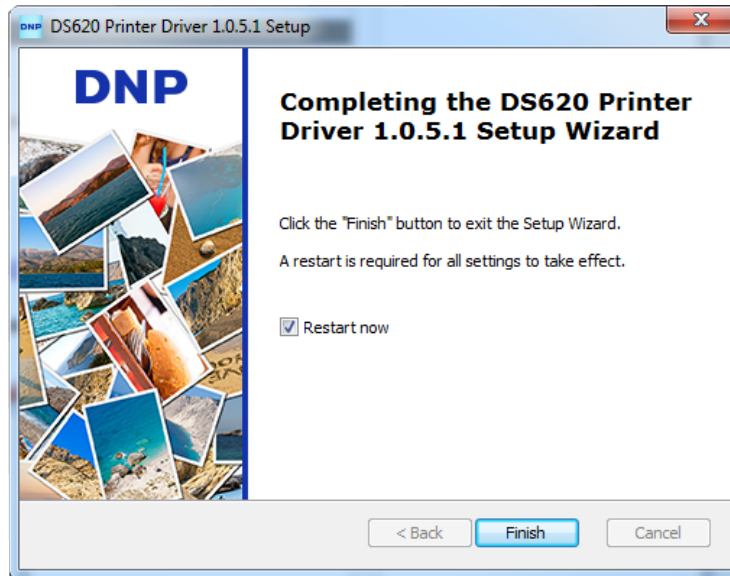
- The **Printer Driver** dialog box is displayed, showing the progress of the installation.



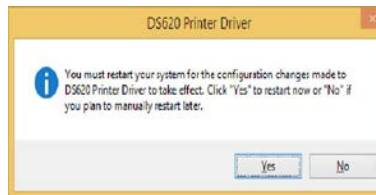
- When the **Windows Security** dialog box appears, click the **Install** button.



- When the Driver Installation tool has completed the update, click the **Finish** button. Upon clicking the **Finish** button, your system is re-started. If you do not wish to restart your computer, un-check the **Restart Now** checkbox. You will need to manually restart your system for the install to be completed.



- On the **Windows Restart** dialog box, click the **Yes** button.



NOTE: After your system re-starts, a second restart is required for the Fine Matte print finish to become functional.

Contact DNP Technical Support

If you are still experiencing issues, contact DNP IAM using one of the following methods:

United States Phone: 1-855-367-7604 or (980) 777-1178

Latin America Phone: 1-855-367-8008 or (980) 777-1175

Email: dnpsupport@dnp.imgcomm.com

Weekday Hours: Monday-Friday 9am EST – 6pm EST excluding holidays

Weekend Hours: Saturday and Sunday Closed