

# **DNP**

**DIGITAL PHOTO PRINTER**

# **DS40**

# **DS80**

## **Printer Driver Instruction Manual**

For Windows 7, 8

- Safety precautions

Please read the User's Manual for the printer carefully before use, and follow the instructions. Note that the contents of directions for use and safety precautions correspond to the safety standards as of the time the User's Manual has been created.

- Remodeling

For product safety, do not remodel the DS40/DS80 printers or the contents of the DS40/DS80 printer drivers and the CD.

- Copyright

Copyrights, trademarks or any other intellectual property rights whatsoever that pertain to documents, programs or other items provided with this product, are ascribed to Dai Nippon Printing Co., Ltd., or the respective other holders of rights. Except in cases permitted by applicable laws, these may not be duplicated or used without consent from Dai Nippon Printing Co., Ltd.

Microsoft and Windows are registered trademarks of Microsoft Corporation valid in the USA and other countries.

LEADTOOLS Copyright (C) 2008 LEAD Technologies, Inc.

# Contents

---

<b>Chapter 1 Install</b>	<b>1</b>
1.1 Printer and Host computer Preparation	2
1.2 Installing the Driver Package	2
1.3 Installing the Printer Driver	5
1.4 Installing a Driver for an Unspecified Device	9
<b>Chapter 2 Properties</b>	<b>12</b>
2.1 Opening Printer Properties	12
2.2 Explanation of Print Setting Functions	14
2.2.1 Layout	14
2.2.2 Advanced Options	15
2.2.3 Paper/Quality	20
2.2.4 Option	20
2.2.5 Color Adjustment	21
2.3 Default Values for Various Settings	22
2.4 Color Management	22
2.5 Print Area	23
<b>Chapter 3 Updating the Driver</b>	<b>24</b>
<b>Chapter 4 Driver Removal</b>	<b>31</b>

# Chapter 1 Install

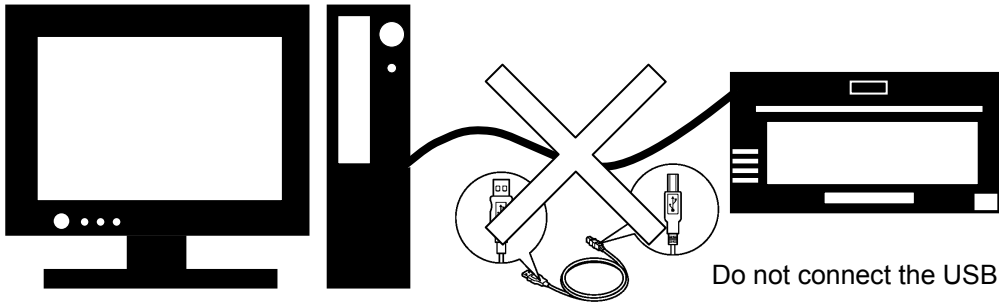
## Installation Flow

Installation is done in the following 3 steps.

Details of each step are shown in a subsequent page.

### STEP 1 Prepare the printer and computer

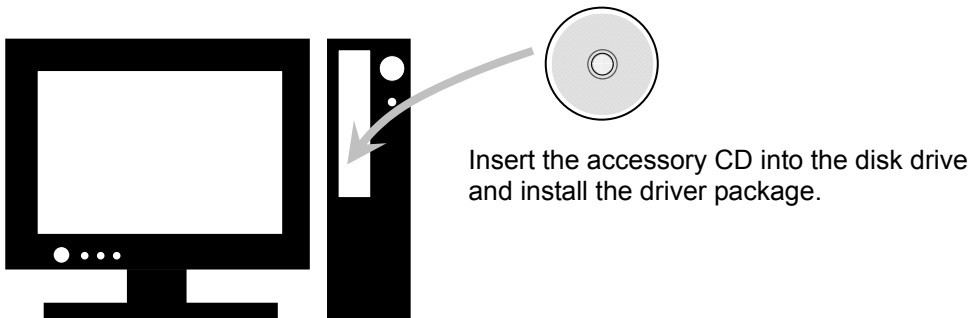
-> "1.1 Printer and Host computer Preparation"



Do not connect the USB cable at this step.

### STEP 2 Install the driver package

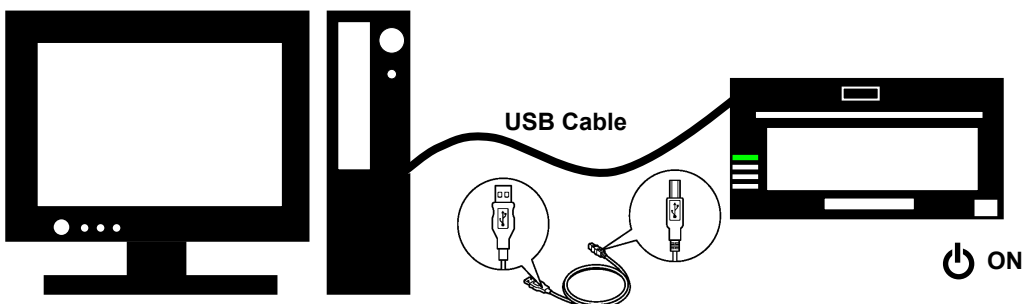
-> "1.2 Installing the Driver Package"



Insert the accessory CD into the disk drive and install the driver package.

### STEP 3 Install the printer driver

-> "1.3 Installing the Printer Driver"



Connect the USB cable, turn the printer power ON, and install the printer driver. After installation is complete, reboot the computer.

## 1.1 Printer and Host computer Preparation

Check that the power for the DS40/DS80 printer is OFF.

Have a USB cable ready. But do not connect the printer to the computer with the USB cable at this point.

In order to install the driver, login with administrator right. The following explanations are given on the assumption of use with administrator rights.

The following describes the driver installation for the “DS40”, but it is the same for the “DS80”. Please just substitute “DS80” for “DS40” when following the directions.

## 1.2 Installing the Driver Package

Insert the accessory CD into the disk drive.

Start Explorer, and click on the corresponding drive.

(If the AutoPlay function is on, select “Open folder to view files – using Windows Explorer”.)

(In Windows 8 if the AutoPlay function is on, click on the message of “Tap to choose what happens with this disc.”, then select “Open folder to view files File Explorer”.)

Select the following folders from the accessory CD. \*Be sure to select the folder that matches your environment.

DS40 => Windows 7 ... Drive of CD:\DS\_Driver\DS40\English\7

Windows 8 ... Drive of CD:\DS\_Driver\DS40\English\8

DS80 => Windows 7 ... Drive of CD:\DS\_Driver\DS80\English\7

Windows 8 ... Drive of CD:\DS\_Driver\DS80\English\8

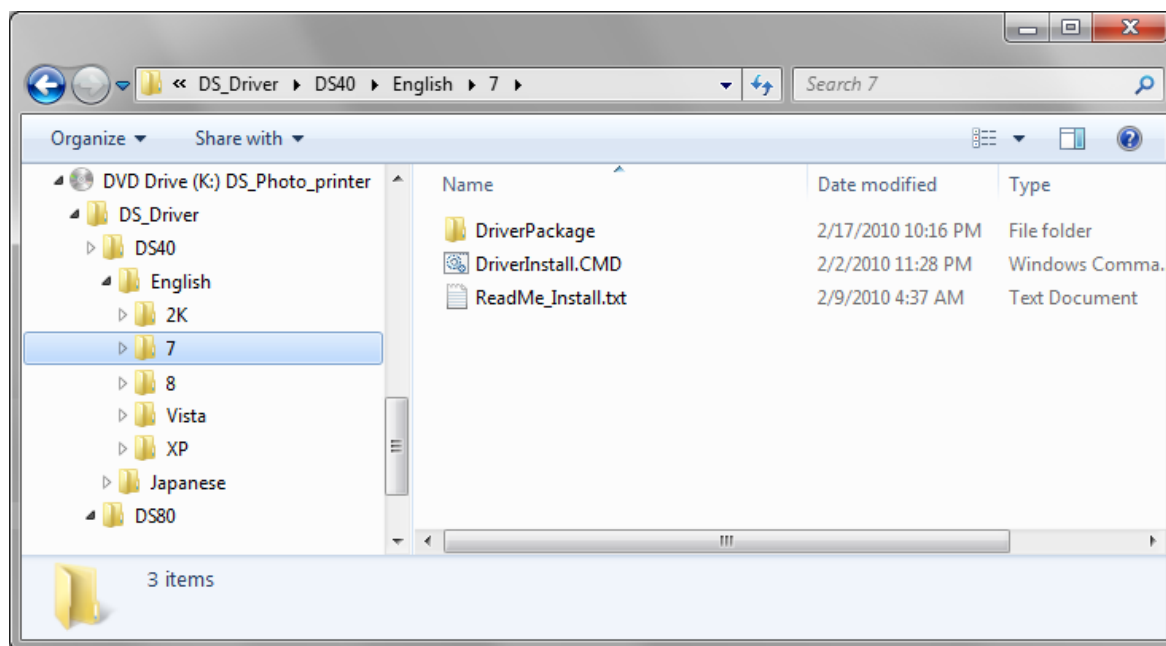


Fig 1.1 Driver Package Folder

In the selected folder, double click on the file “DriverInstall.CMD”. (Depending on your operating environment, the .CMD extension may not be shown.)  
 The best Driver Package Installer for your operating system (32 or 64 bit) will automatically be selected.

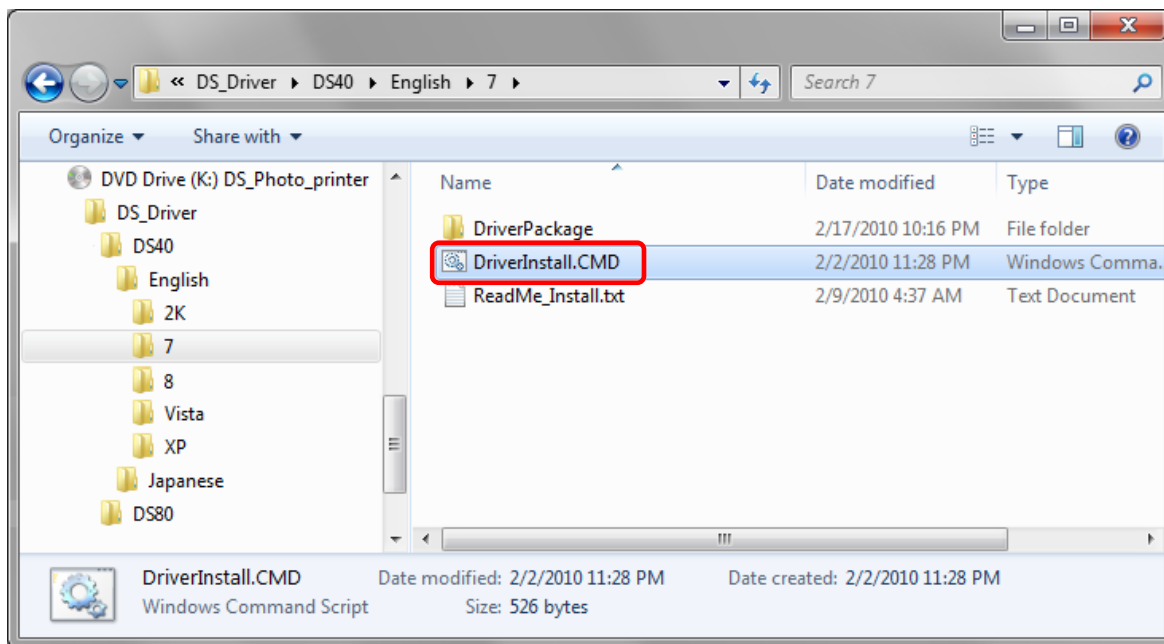


Fig 1.2 Install File

If the User Account Control dialog appears, click on “Yes”.

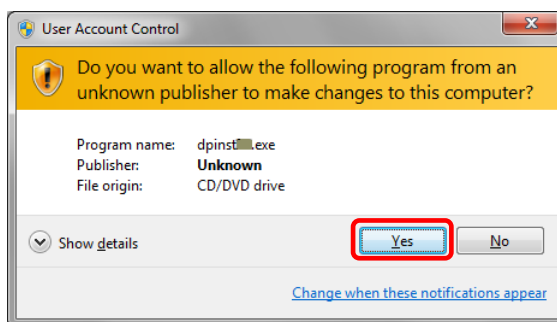


Fig 1.3 User Account Control

When the “Welcome to the Device Driver Installation Wizard!” window appears, click on “Next>”.

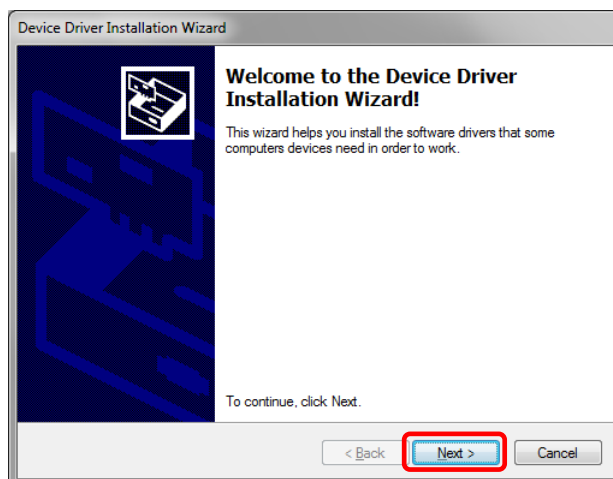


Fig 1.4 Starting of Installation Wizard

If the Windows Security confirmation window appears, click on “Install this driver software anyway”.

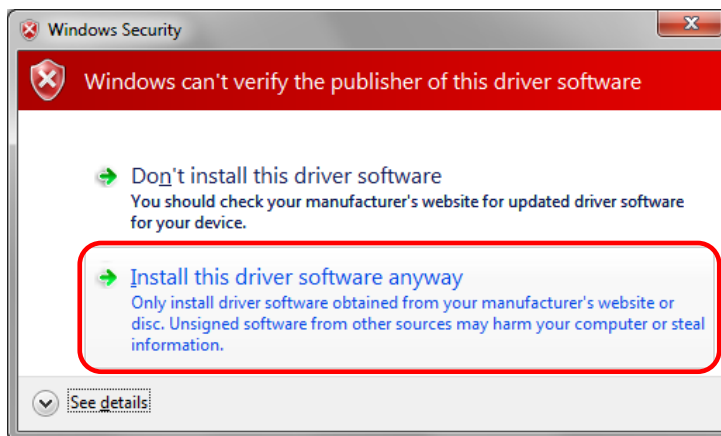


Fig 1.5.i Windows Security confirmation (Windows 7)

In Windows 8, click on “Install”.

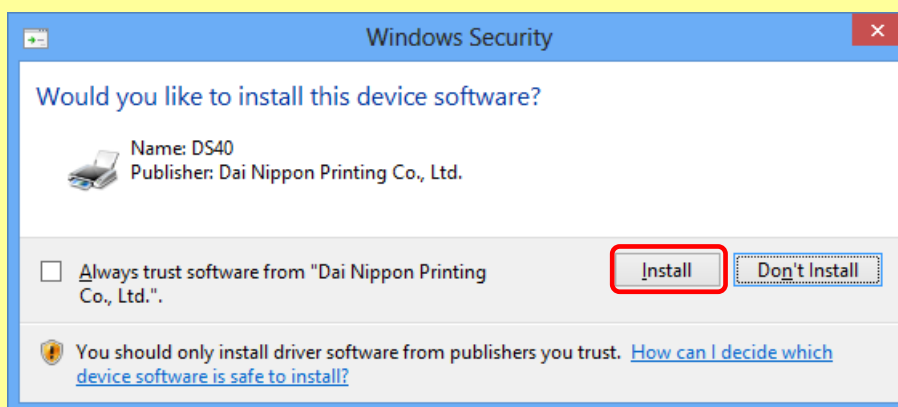


Fig 1.5.ii Windows Security confirmation (Windows 8)

This starts the Driver Package installation. Please wait until it is complete.  
When the “Completing the Device Driver Installation Wizard” window appears, click on “Finish”.

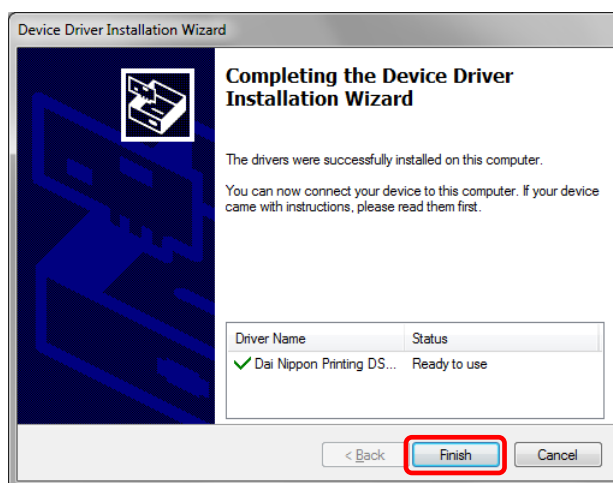


Fig 1.6 Completion of the Installation Wizard

## 1.3 *Installing the Printer Driver*

Connect the printer to the computer with the USB cable, and turn the printer power ON.  
The printer will be recognized, and the driver installation should begin.

\* Please refer to the manual for the DS40/DS80 printer for connection if needed.

When driver installation begins, the message “Installing device driver software” will appear above the task bar.  
The message will not appear in Windows 8. Please turn to page 7.

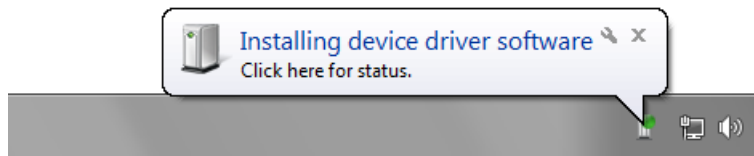


Fig 1.7 Driver Installation message

By clicking on this message, the “Driver Software Installation” window will be opened, and the driver installation status will be shown. Click on “Close” to close the window.

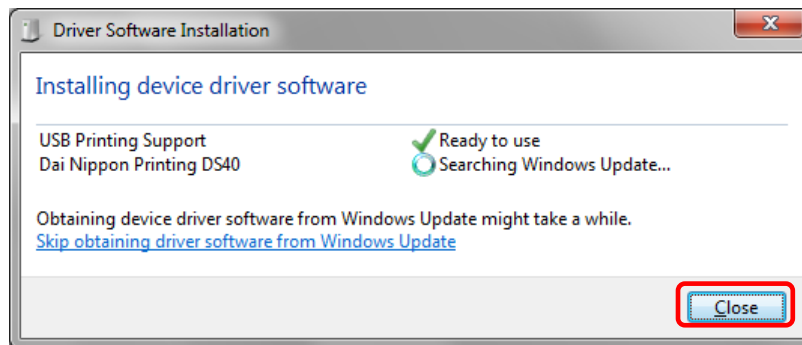


Fig 1.8 Driver Software Installation

\* About “Skip obtaining driver software from Windows Update”

If the operating system setting is such that it will get the driver software from Windows Update, it will first search for the driver through Windows Update, so it will take more time to complete the installation. If you skip getting the driver software through Windows Update, the time to complete the installation will be decreased (Depending on the environment, it may take some time to complete the installation).

Click on “Skip obtaining driver software from Windows Update” in the “Driver Software Installation” window.

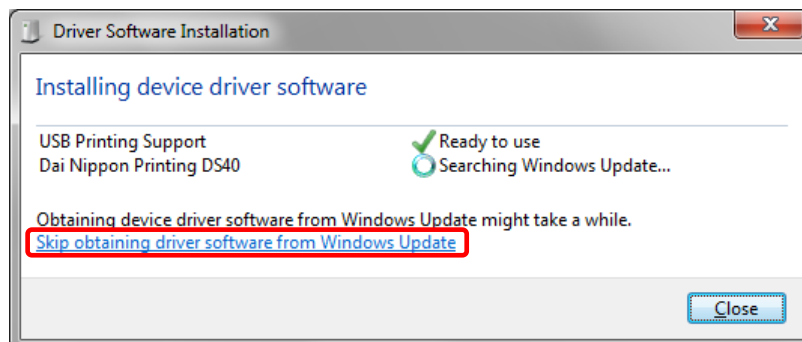


Fig 1.9 Skip obtaining driver software from Window Update



When the confirmation window appears, click on “Yes”.

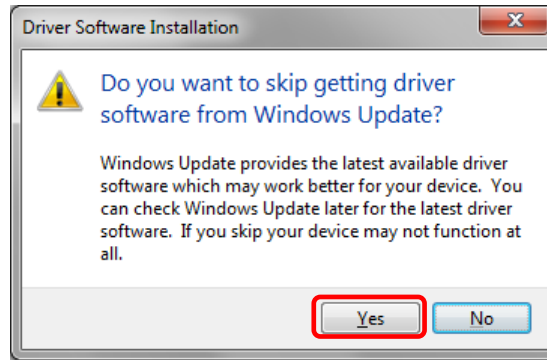


Fig 1.10 Skip getting the driver software from Windows Update

From a beginning of installation after a while, the message “Your device is ready to use” will appear above the task bar, and the printer driver installation will be complete.

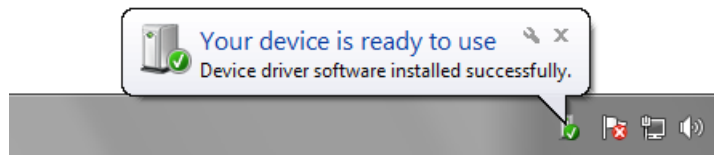


Fig 1.11 Driver Installation Complete message

By clicking on this message, the “Driver Software Installation” window will be opened, and “Your device is ready to use” will be shown. Click on “Close” to close the window.

(If the “Driver Software Installation” window is shown from the start of installation, the message above will not be shown.)

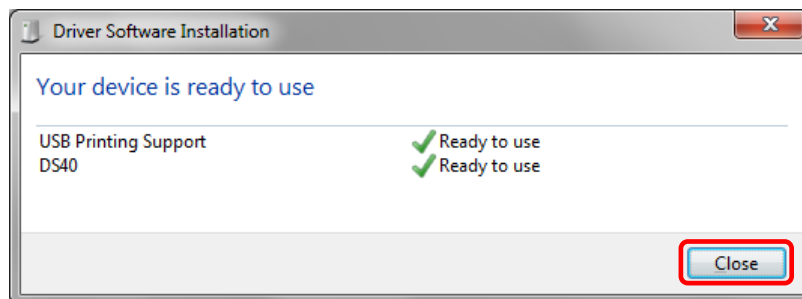


Fig 1.12 Driver Software installation complete

Select “Start”, then “Control Panel”, and open the control panel.

In Windows 8, right click the Start screen, select right-under the "All apps" and select the control panel.

Click on “View devices and printers” in the control panel.

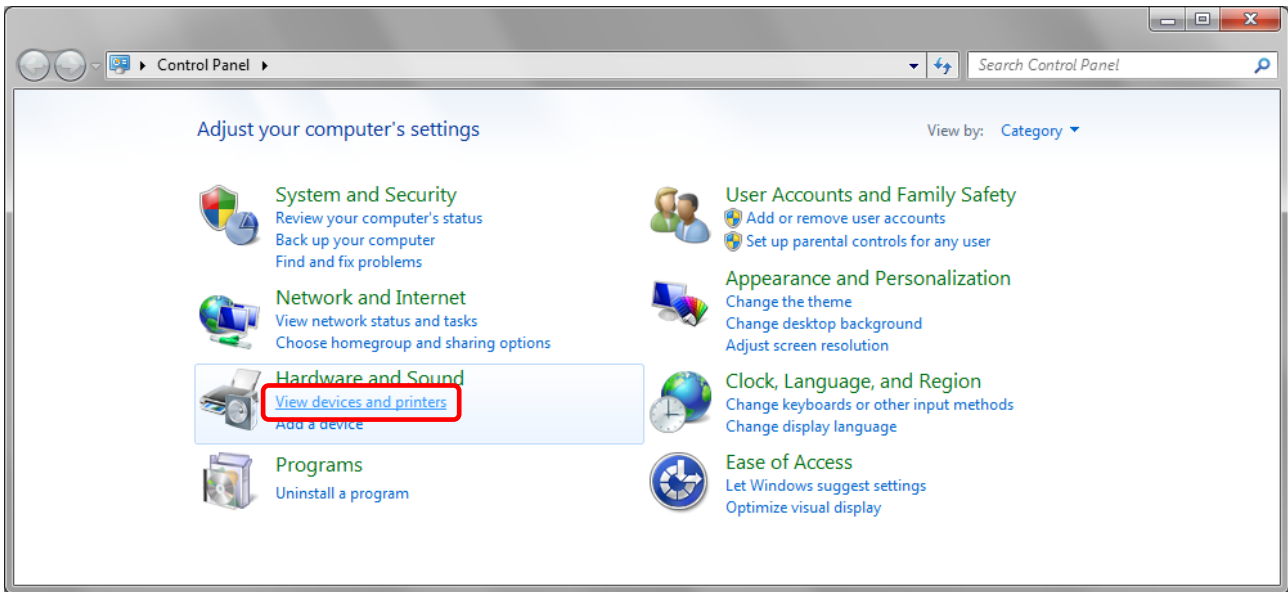


Fig 1.13 Control Panel

Check that the DS40 is shown in the Devices and Printers window.

Note: In Windows 8, DS40 icon does not appear if the printer is offline (if the printer with the power on is not connected).

Now, installation of the DS40 printer driver is complete.

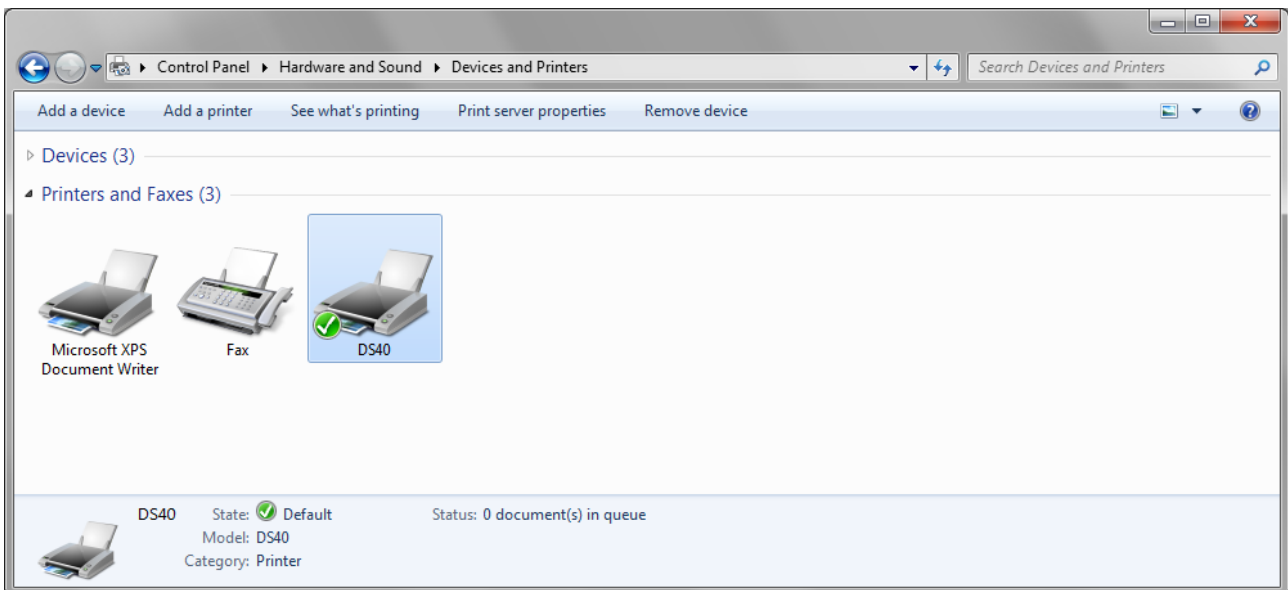


Fig 1.14 Devices and Printers window

After installation of the printer-driver is complete, be sure to reboot the computer.

If the DS40 printer driver installation was unsuccessful, the message “Device driver software was not successfully installed” will appear above the task bar.

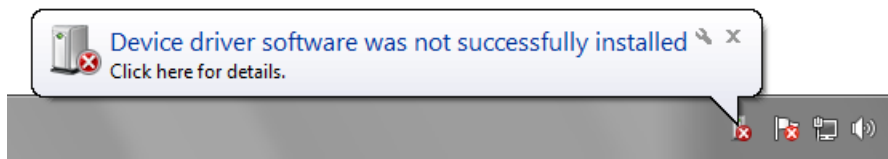


Fig 1.15 Driver Not Installed message

By clicking on this message, the “Driver Software Installation” window will be opened, and the message “Device driver software was not successfully installed” will appear. Click on the “Close” button.

(If the “Driver Software Installation” window is shown from the start of installation, the message above will not be shown.)

If the driver installation was unsuccessful, refer to the next section “1.4 Installing a Driver for an Unspecified Device” and install the printer driver.

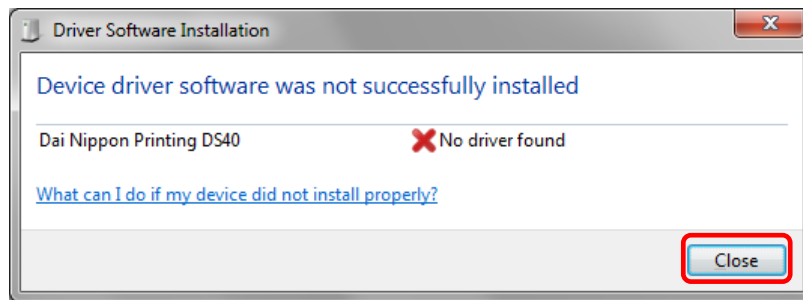


Fig 1.16 If the Driver is not installed successfully

## 1.4 Installing a Driver for an Unspecified Device

Before installing the driver package, connect the printer (with power ON) to the computer, to create an "Unspecified" device in the "Devices and Printers" window. Using this method, the printer driver can be installed as follows.

Also, when a driver is not installed correctly but the "Unspecified" device is created by the method of connecting a printer after installing the driver package of usual printer driver installation procedure, you can install the driver using the following method.

### 1. Installing the Driver Package

If the driver package has not been installed yet, follow the procedure shown in "1.2 Installing the Driver Package".

When the driver package has been installed, installation of the printer driver for the Unspecified device may be completed automatically.

### 2. Installing a driver for an Unspecified device

In the "Unspecified" device of the "Devices and Printers" window, do the right click of the "Photo Printer", and click on the "Troubleshoot" from pull-down menu.

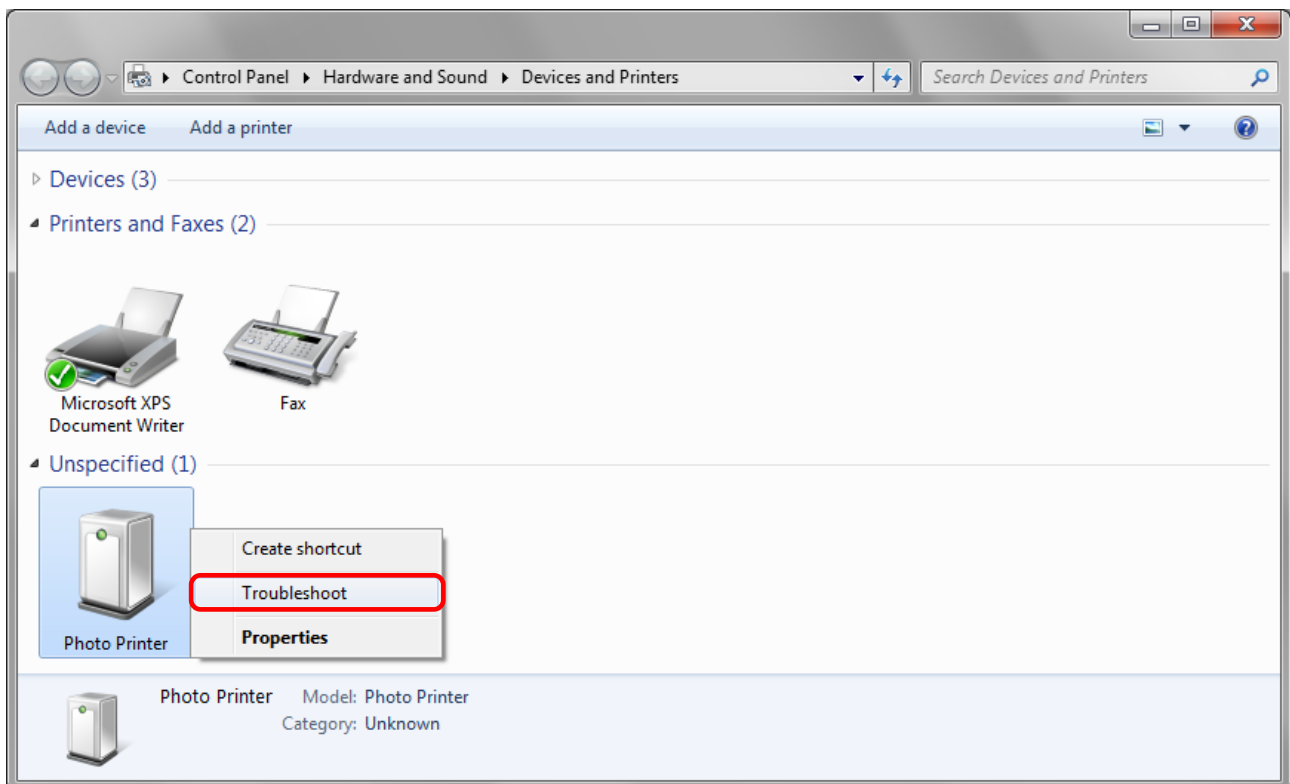


Fig 1.17 Photo Printer as an unspecified device

When the “Install a driver for this device” window appears, click on “Apply this fix”. It will automatically search for the driver and installation is started.

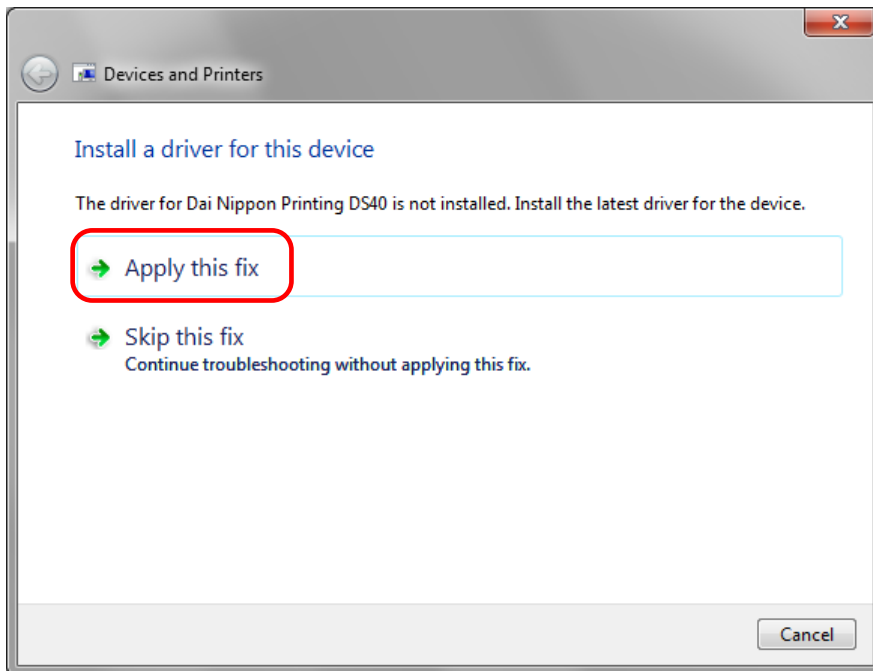


Fig 1.18 Applying the Fix

When the driver has been installed, “Troubleshooting has completed” will appear. Click on “Close the troubleshooter” to end the troubleshooting.

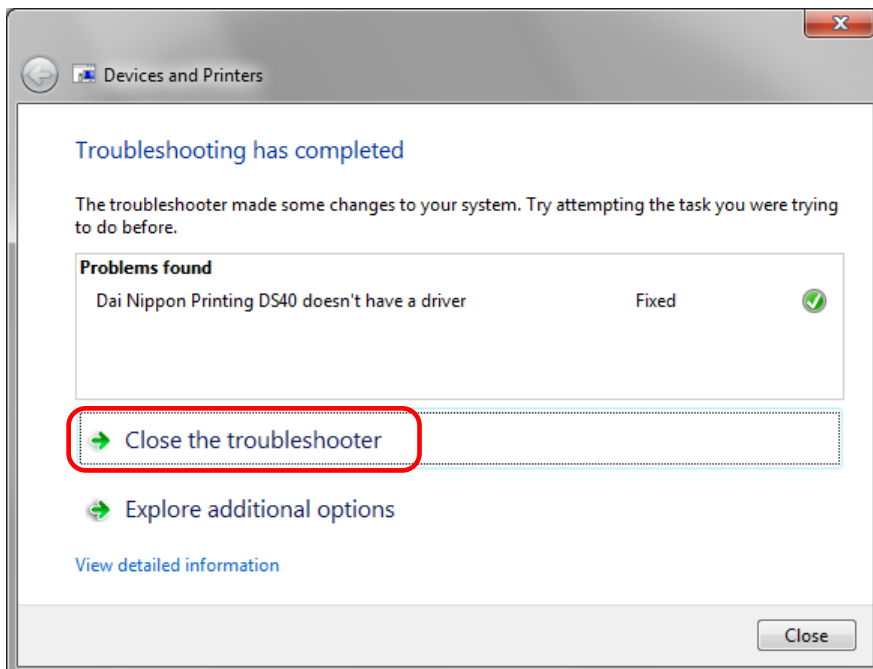


Fig 1.19 Completion of Troubleshooting

Check that the DS40 is displayed in the “Devices and Printers” window.

**Note:** In Windows 8, DS40 icon does not appear if the printer is offline (if the printer with the power on is not connected).

Now, the DS40 Printer Driver installation is complete.

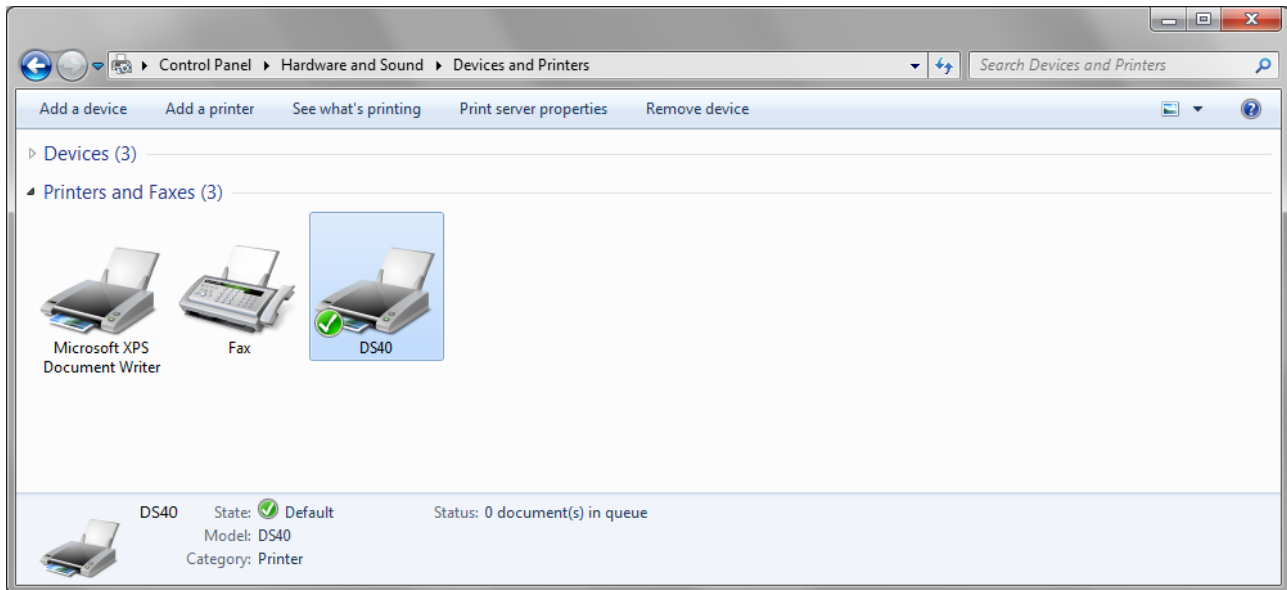


Fig 1.20 Devices and Printers

After installation of the printer-driver is complete, be sure to reboot the computer.

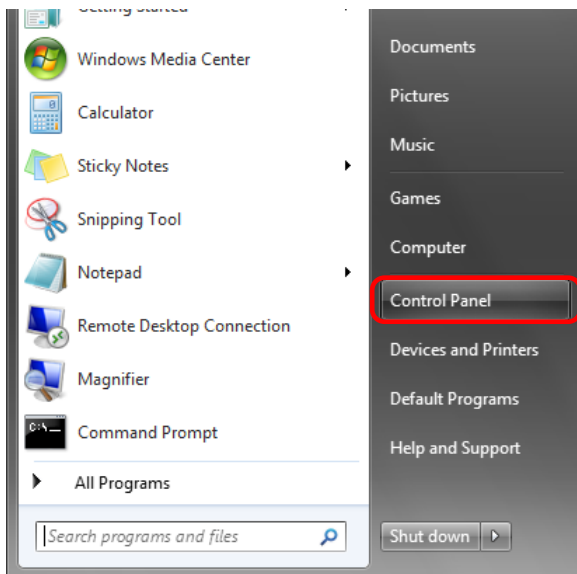
## Chapter 2 Properties

Various printer settings can be made using the DS40/DS80 Driver properties. Before operation, be sure to have a good understanding of the contents. Login by administrator authority is required for operation. Depending on application of the use, operation from print setting of the application is necessary.

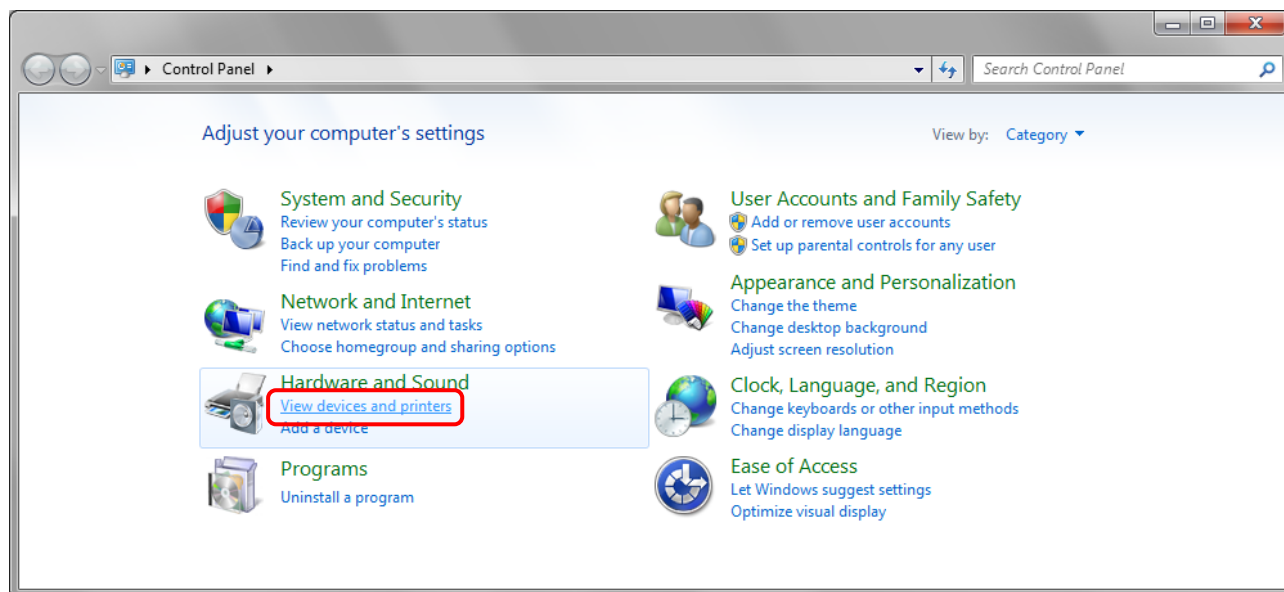
### 2.1 Opening Printer Properties

1. Click Start => Control Panel => open the control panel

In Windows 8, Right click on the Start screen => All apps => Control Panel => open the control panel

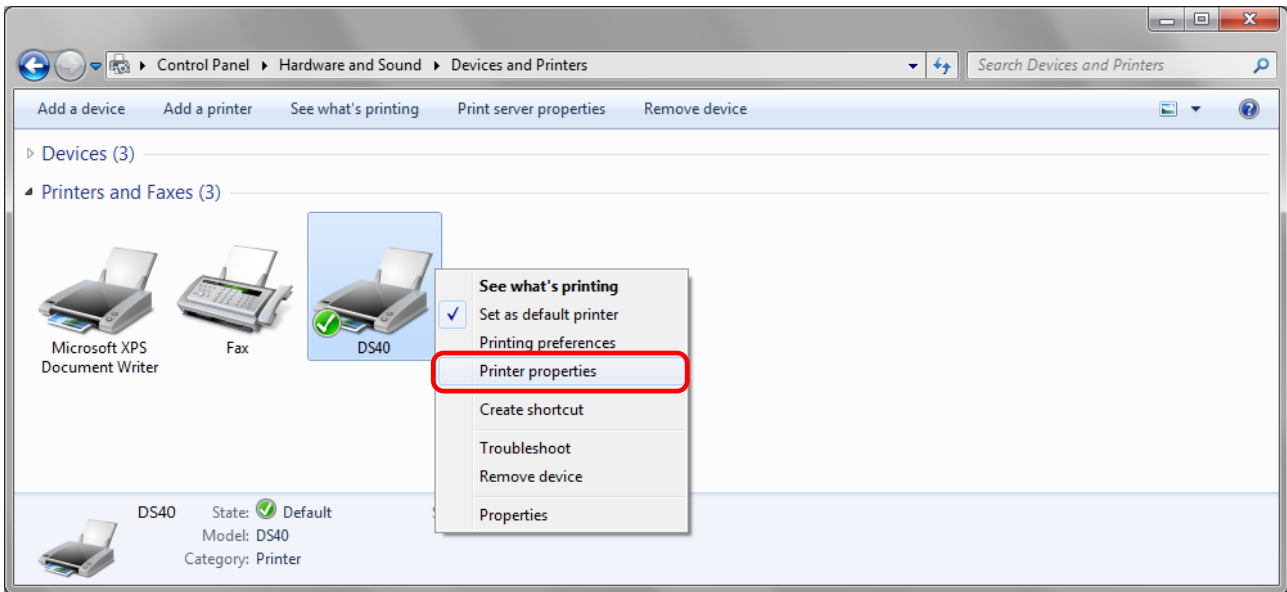


2. In the control panel, select View devices and printers => open the Devices and Printers window

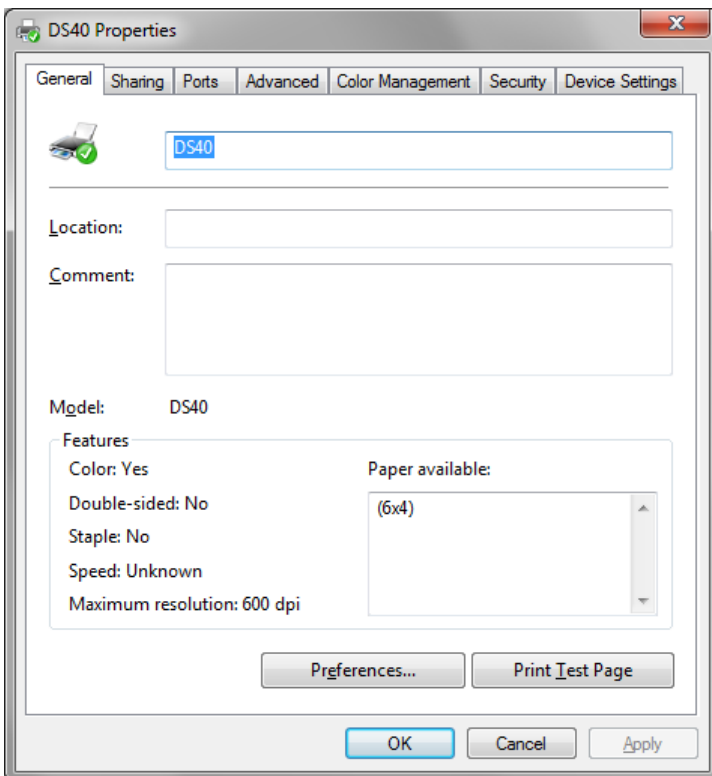


3. Right-click on the DS40 icon, and from the pull-down menu select Printer properties => open the Properties window

Note: In Windows 8, DS40 icon does not appear if the printer is offline (if the printer with the power on is not connected).



4. The DS40 Properties window will appear.





## 2.2 Explanation of Print Setting Functions

From the Properties window, by selecting Preferences you can make various print settings.

### 2.2.1 Layout

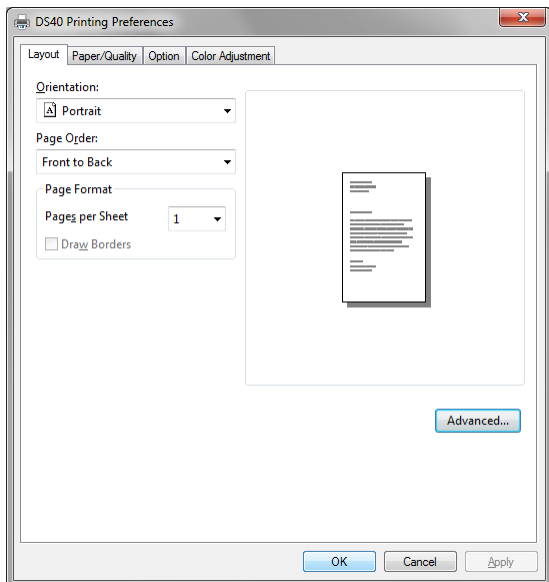
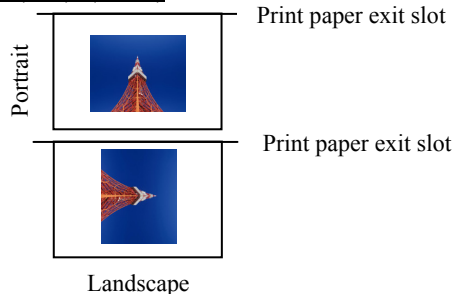


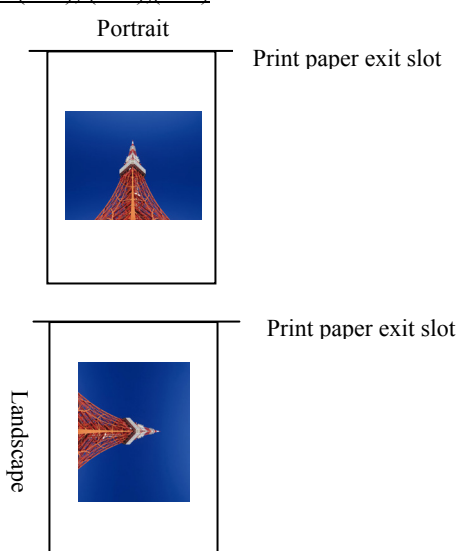
Fig 2.2.1 Layout tab

Output image depending on print direction

Ex.) For (6x4), (5x3.5)



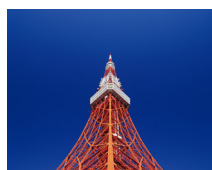
For (5x7), (6x8), (6x9)



#### Orientation

Assign print orientation as vertical or horizontal.

Output images of the original image without rotation are shown at the right.

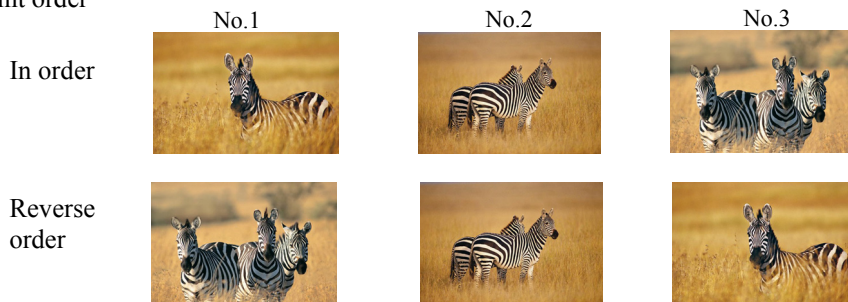


Original image orientation

#### Page Order

When printing multiple images in the application, you can set the order.

Ex.) Print order

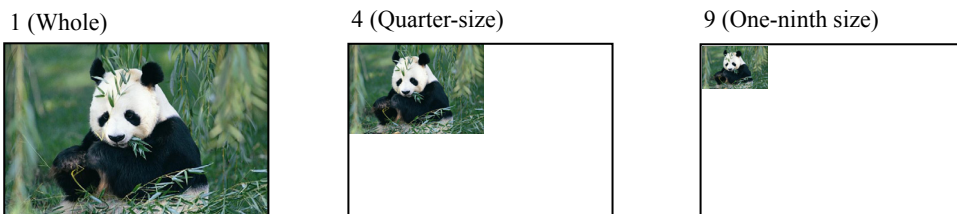


#### Pages per Sheet

Prints the designated fractional size. Normally you should specify a value of 1.

(If you want to specify other than 1, please use the Print Quality settings to 300x300dpi or 600x600dpi)

Ex.) Fractional size



## 2.2.2 Advanced Options

By selecting [Advanced] in the Layout window, various settings can be made using Advanced Options.

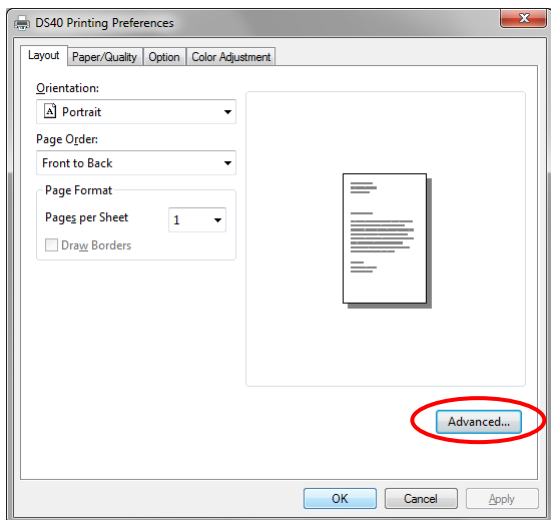


Fig 2.2.2.1 Advanced Settings

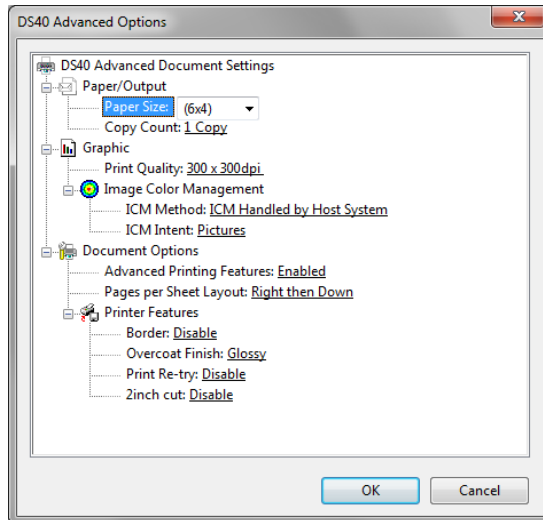


Fig 2.2.2.2 Advanced Options tab

### Paper Size

You can designate the paper size. Please match the paper size to the media size with which the printer is equipped

### Copy Count

You can designate the number of times an image will be printed.

### Print Quality

You can designate the print quality.

Print Quality	Function
<b>300 x 300dpi</b>	Printing in the high-speed mode
<b>300 x 600dpi</b>	Printing in the high-quality mode * If the application can not set an asymmetric aspect resolution, please set the 600x600dpi. *When you execute the "Print Test Page" in printer properties in Windows 8, depending on the specifications of the OS, is printed the aspect ratio of the printer mark is different.
<b>600 x 600dpi</b>	Printing in the high-quality mode (Printer driver converts to 300x600dpi data, and sends it to the printer.)

### ICM Method

ICM Method	Function
<b>ICM Disabled</b>	2.2.4 Synchronous with "Color Management: None" in paper option.
<b>ICM Handled by Host System</b>	2.2.4 Synchronous with "Color Management: ICM" in paper option. Performs color management with the driver.
<b>ICM Handled by Printer</b>	This is the same as setting "ICM Handled by Host System".

### ICM Intent

This designates the rendering method when using ICM. Always have the ICC profile for the DS40/DS80 set to "Picture". Please do not use it at other settings.

### Advanced Printing Features

Always have it set to "Enabled". Please do not use it at other settings.

### Pages per Sheet Layout

The layout direction of a picture is specified, when Pages per Sheet setting is multiple pages per sheet.

### Border

Synchronous with the border option in the paper option.

**Overcoat Finish** (Depending on the version of printer firmware being used, “Glossy” may be the only option.)

The overcoat finish for the printed surface can be selected from the following two types.

Overcoat Finish	Function
<b>Glossy</b>	This finishes the print with a glossy surface.
<b>Matte</b>	This finishes the print with a matte (non-glossy) surface.

- \* Change the printer of the version corresponding to Overcoat Finish and a non-corresponded version, and when you use it by connecting it to the same USB port, when you change printers, reboot the computer.

**Print Re-try** (Depending on the version of printer firmware being used, “Disable” may be the only option.)

This sets up whether print data in a printer buffer when the error of a printer occurs is printed after error recovery, or it does not print.

Print Re-try	Function
<b>Disable</b>	Printing data in a printer buffer is cleared in the case of a printer error. After an error recovery, the cleared image data must be re-sent. When using an application that has an error recovery function, select this option.
<b>Enable</b>	Printing data in a printer buffer is held in the case of a printer error. After an error recovery, the print process resumes with the saved data. However, if the power is turned OFF, the data will not be saved.

- \* Change the printer of the version corresponding to Print Re-try and a non-corresponded version, and when you use it by connecting it to the same USB port, when you change printers, reboot the computer.

According to the contents of a printer error, the power supply of a printer needs to be re-switched on for error recovery. In this case, it is not dependent on a setup of Print Re-try, and printing data in a printer buffer is cleared. Operation by Print Re-try setup in each error is shown below.

Contents of an error	Print Re-try setup is “Disable”	Print Re-try setup is “Enable”
Paper End	Please resend picture data not printed after error recovery.	Printing processing is resumed from data currently held in a printer buffer after error recovery. When paper initialization operation is performed, it is printed after paper initialization operation.
Ribbon End		
Cover Open		
Paper Jam (*1)		
Ribbon Error (*1)		
Paper Definition Error		
Scrap Box Error	For error recovery, the power supply of a printer once needs to be turned OFF. Therefore, print data in a printer buffer is cleared by power-supply OFF of a printer regardless of a setup of the Print Re-try function.	For error recovery, the power supply of a printer once needs to be turned OFF. Therefore, print data in a printer buffer is cleared by printer power-supply OFF even if the Print Re-try function is set to "Enable".
Data Error		
Head Voltage Error		
Head Position Error		
Power Supply Fan Stop		
Cutter Error		
Abnormal Head Temp.		
Abnormal Media Temp.		
Ribbon Tension Error		
RFID Module Error		
Abnormal motor Temp.	Please resend picture data not printed after printer re-starting.	
System Error		

- \*1: After an error stop, a paper or a ribbon should perform removal work of an error factor according to a printer user's manual.

**2inch cut** \*Correspondence Model:DS40

(Depending on the version of printer firmware being used, “Disable” may be the only option.)

In the case of the specific paper size of DS40, it sets up whether it cuts into two or more sheets by the length of 2 inches.

2inch cut	Function
<b>Disable</b>	It cuts in usual size.
<b>Enable</b>	By the length of 2 inches, in the case of 6x4 size, it cuts to two sheets, and, in the case of 6x8 size, it cuts to four sheets.

**<Multiple layout>**

When the DS40 is using 6x9(A5W), 6x8 or DS80 is using 8x12, 8x10 size media, 2 or 3 image layout is possible. With the printer driver paper setting, multi-image layout is made possible, and the image sizes are as follows.

Layout designation

	Driver paper setting (layout)	Image size(mm)	Using media
DS40	(6x4) x 2	(156.1x105.0) x 2	6x9(A5W), 6x8
DS80	(8x4) x 2	(207.3x104.6) x 2	8x12, 8x10
	(8x5) x 2	(207.3x130.0) x 2	8x12, 8x10
	(8x6) x 2	(207.3x155.4) x 2	8x12
	(8x5)_(8x4)	(207.3x130.0) x (207.3x104.6)	8x12, 8x10
	(8x6)_(8x4)	(207.3x155.4) x (207.3x104.6)	8x12, 8x10
	(8x6)_(8x5)	(207.3x155.4) x (207.3x130.0)	8x12
	(8x8)_(8x4)	(207.3x206.2) x (207.3x104.6)	8x12
	(8x4) x 3	(207.3x104.6) x 3	8x12

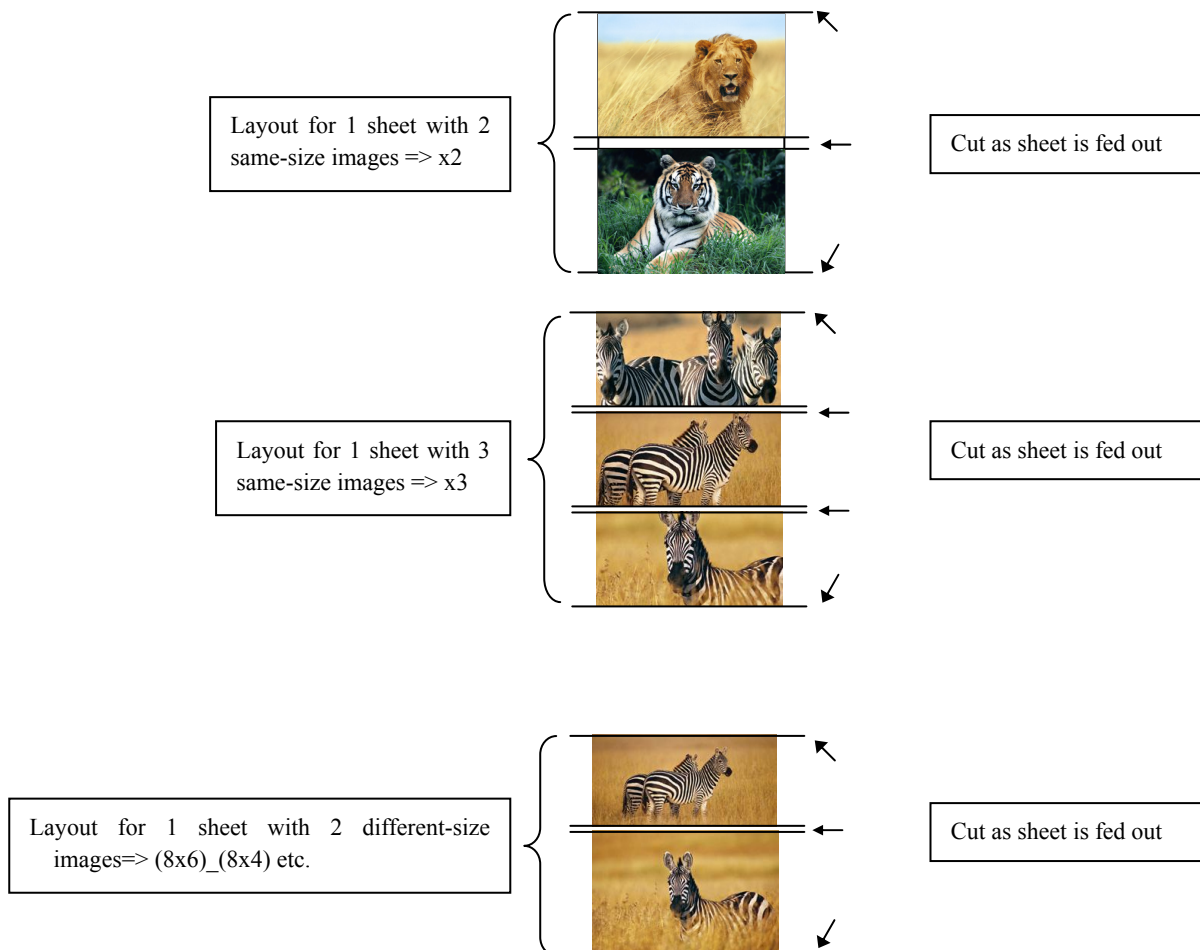
Multiple layout is possible under the following conditions.

1. The printer is using 6x9, 6x8 or 8x12, 8x10 size media.
2. The printer driver paper size is set to one of the above sizes.
3. Multiple images are sent from the application.

Note) Because the multi-image layout occurs on a per job basis, this works when there are multiple images for 1 job. If you want to print the same image, be sure to send the image data for each copy to be printed. The printer prints 2 or 3 images in one operation, and the paper is cut as it is fed out.

**<Multi-image layout patterns>**

The following combinations are possible for the multi-image layout patterns.



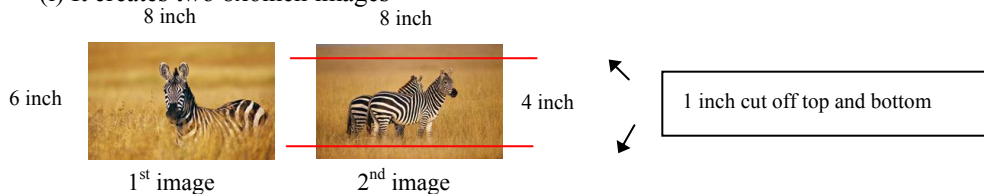
**Cautions for printing 2 different-size images on one sheet**

When printing 2 different-size images on 1 sheet, 1 inch will be cut off the top and bottom of the 2<sup>nd</sup> image when the image is being generated. When creating the original image, be aware of the following points.

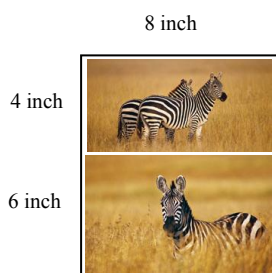
Ex.) When the layout is set for (8x6)<sub>1</sub>\_(8x4)<sub>2</sub>

The driver creates the layout image in the order of (i), (ii).

(i) It creates two 8x6inch images

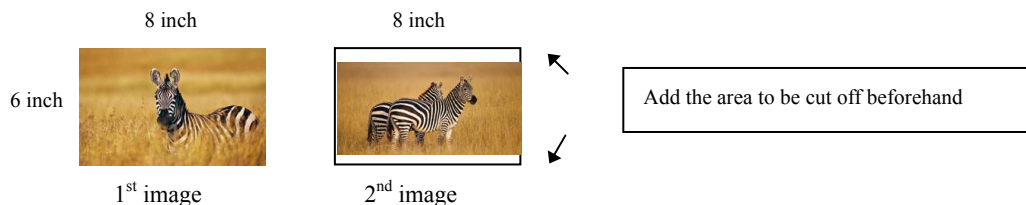


(ii) The driver then lays out the 2 different-size images from (i) as one (8x10) image and outputs it to the printer.



Ex.) Example of creating the original image.

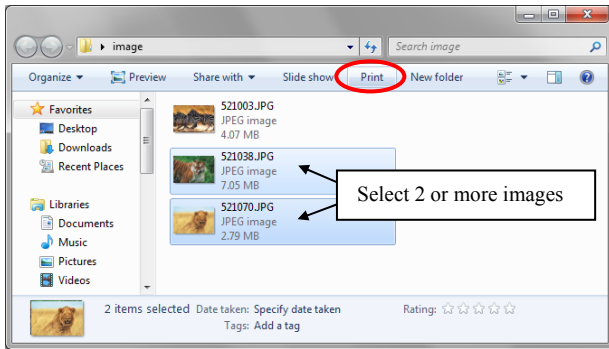
When outputting the original image to the driver, the 1<sup>st</sup> and 2<sup>nd</sup> images are created as the same size, so factor in the space that will be cut off from the 2<sup>nd</sup> image.



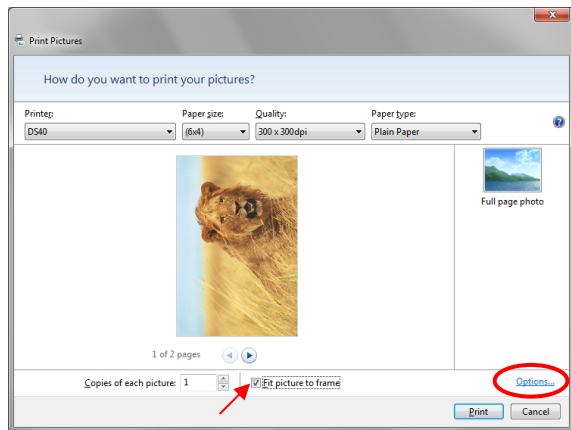
**<Example of Application Use>**

This is an example using Windows Explorer

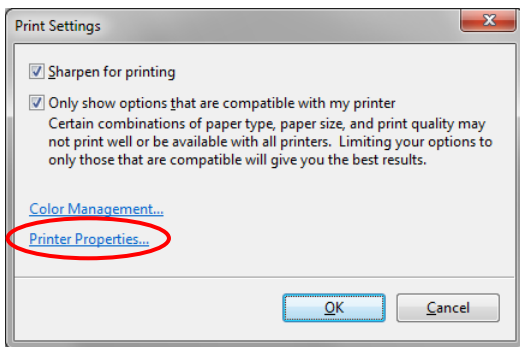
Step 1. Select 2 or more images=>Click “Print”.



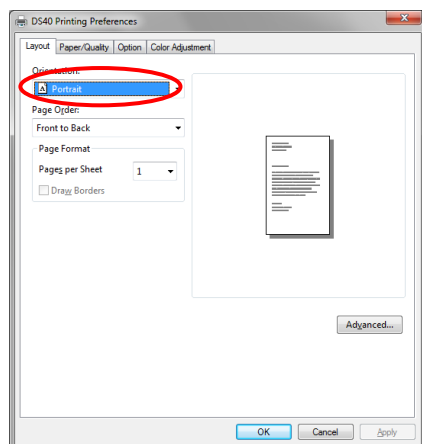
Step 2. Check “Fit picture to frame” and click “Options”.



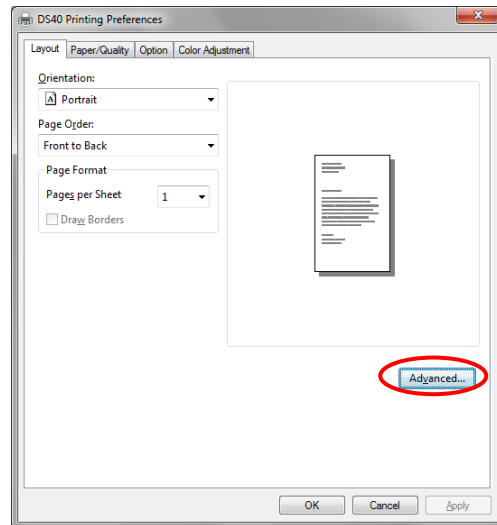
Step 3. Click on “Printer Properties”.



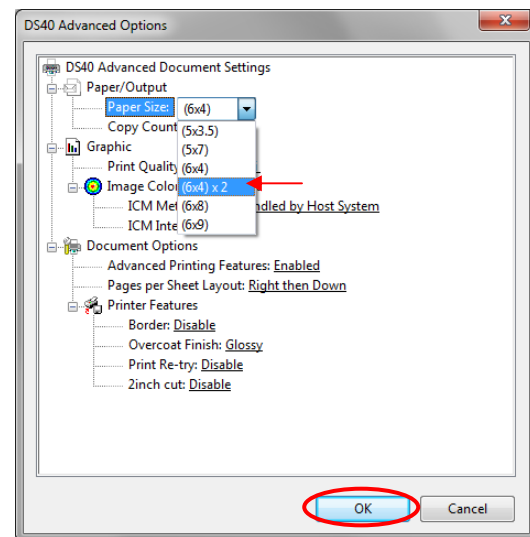
Step 4. From the “Orientation” pull-down menu, select “Portrait”.



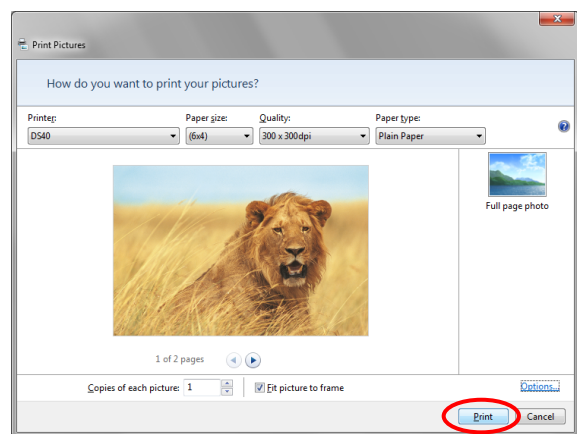
Step 5. Click on “Advanced”.



Step 6. Set the Paper Size to “(6x4)x2”. Then click “OK” on the windows from steps 6=>5, returning to the window displayed in Step 2.



Step 7. Click on “Print”.



## 2.2.3 Paper/Quality

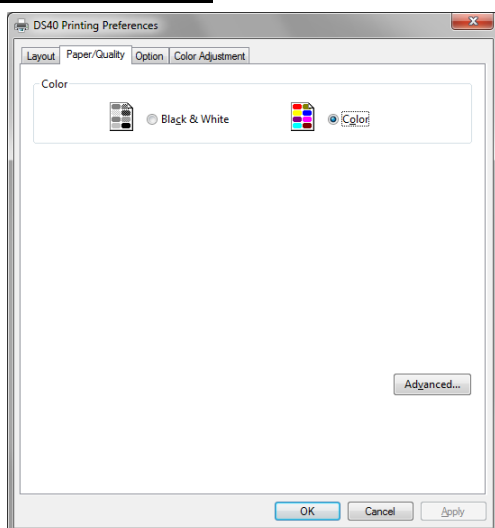


Fig 2.2.3 Paper/Quality tab

**Color** Please set to color print. Do not use for black and white printing.

## 2.2.4 Option

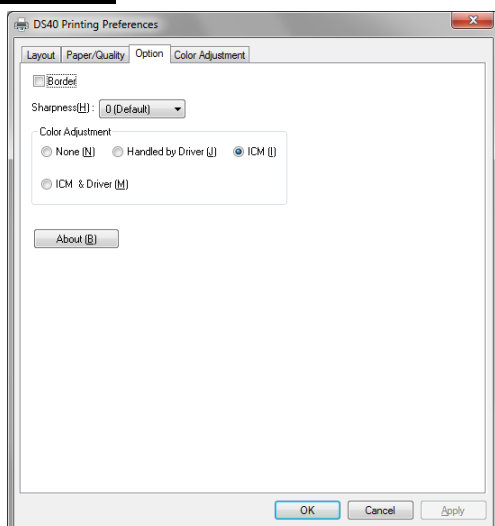


Fig 2.2.4.1 Paper option tab

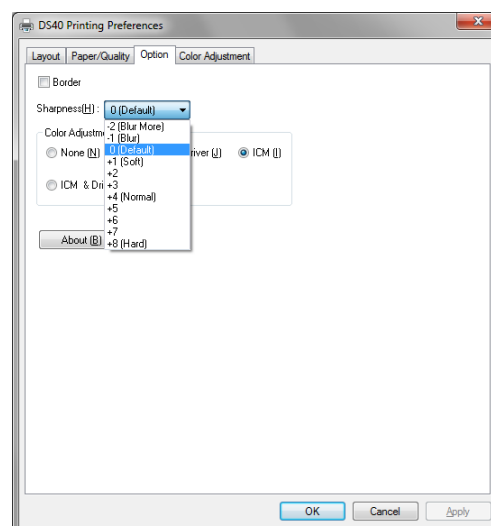


Fig 2.2.4.2 Sharpness setting

### Border

Designates yes or no for border (check means with border). Synchronous with border in the Advanced Settings.

### Sharpness

Processes for 11 sharpness levels (Fig 2.2.4.2). 0(Initial setting) means there is no sharpness processing. Minus(-) blurs the image, and plus(+) increases the sharpness.

### Color Adjustment

#### None

Synchronous with the ICM Method in the Advanced Settings. Checking this item disables ICM and the Color Adjustment tab, and color management does not occur from the driver.

#### Handled by Driver

Checking this item disables ICM and [2.2.5 Color Adjustment](#) is enabled. The adjustment values for gamma, brightness, contrast, and chroma are shown.

#### ICM

Synchronous with the ICM Method in the Advanced Settings (ICM Handled by Host System). Checking this item enables color management from the driver.

#### ICM & Driver

If you check this, ICM (color management) and color adjustment will be enabled.

### About

Displays the driver version.

## 2.2.5 Color Adjustment

If you check **Handled by Driver** in [2.2.4 Option](#), the respective color adjustment values in the Color Adjustment tab are reflected in the image.

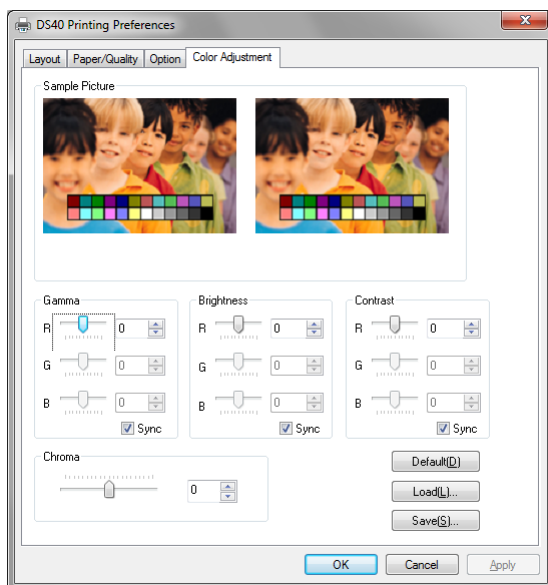


Fig 2.2.5 Color Adjustment tab

Setting ranges in the Color Adjustment tab are as follows:

Adjustment Item	Adjustment Value
<b>Gamma</b>	-100(dark) ~ 100(light) (0 means no adjustment, Gamma 2.0 ~ 0.5) Adjusts the density of the highlights in the image. The greater the gamma value, the brighter the highlights. Synchronous check box ON : Sets RGB at the same value OFF: Sets RGB at a different value
<b>Brightness</b>	-100(dark) ~ 100(light) (0 means no adjustment) Adjusts the brightness of the image. The larger the value, the greater the overall brightness of the image. Synchronous check box ON : Sets RGB at the same value OFF: Sets RGB at a different value
<b>Contrast</b>	-100(weak) ~ 100(strong) (0 means no adjustment) Adjusts the contrast of the image. The larger the value, the greater the contrast. Synchronous check box ON : Sets RGB at the same value OFF: Sets RGB at a different value
<b>Chroma</b>	-100(weak) ~ 100(strong) (0 means no adjustment) Adjusts the color saturation of the image.



## 2.3 Default Values for Various Settings

Default values for each option (at the time of installation) are shown below. If the printer driver does not work correctly after changing the options, please return the options to the default settings.

Note) According to the Service Pack and use environment of OS, the default value at the time of installation may differ from the following chart.

Tab	Options		Default	
Layout	Orientation		Portrait	
	Page Order		Front to Back	
	Pages Per Sheet		1	
Paper/Quality	Color		Color	
Option	Border		Disable	
	Sharpness		0 (Default)	
	Color Adjustment		ICM	
Color Adjustment	Gamma		0	
	Brightness		0	
	Contrast		0	
	Chroma		0	
Advanced (Click [Advanced] button of Layout tab)	Paper/Output	Paper Size		DS40 (6 x 4) DS80 (8x10)
		Copy Count		1
	Graphic	Print Quality		300 x 300dpi
		Image Color Management	ICM Method	ICM Handled by Host System
			ICM Intent	Pictures
	Document Option	Advanced Printing Features		Enable
		Pages per Sheet Layout		Right then Down
		Printer Features	Border	Disable
			Overcoat Finish	Glossy
			Print Re-try	Disable
	2inch cut (DS40 only)		Disable	

Chart 2.3 Print Setting Default Values

## 2.4 Color Management

In [Color Management], this designates the color profile. Default at installation associates [DS40\_xxxx].  
xxxx is a 4-digit number that refers to the version.

Step 1. Select “Color Management” tab in “Printer Properties”, and click on “Color Management” button.

Step 2. Choose printer: DS40 from a device.

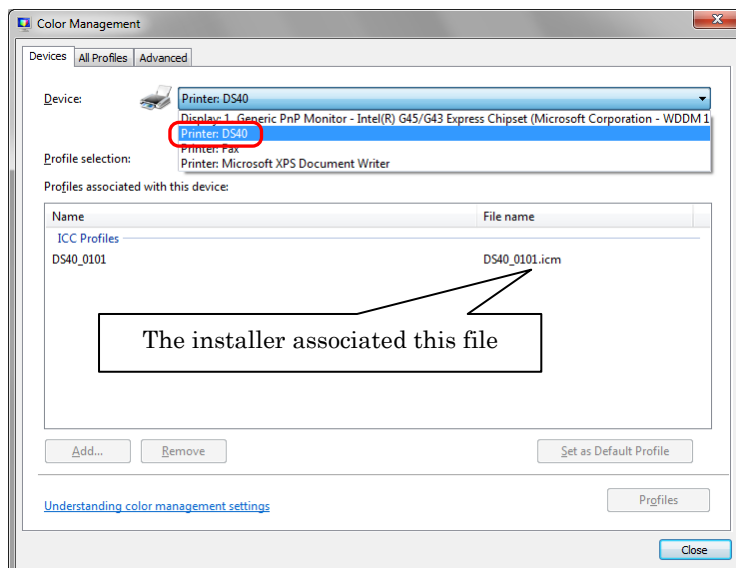
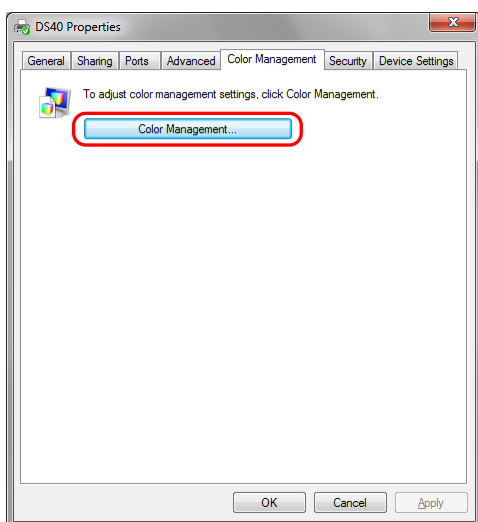


Fig 2.4 Color Management

## 2.5 Print Area

Depending on the paper size designated at the driver, the image size and dot count will be as follows.

Model	Paper	Size (inch)	Print Area (mm)	300 x 300 DPI Dot amount	300 x 600 DPI Dot amount
DS40 / DS80 (*)	(5x3.5)	3.5"x 5"	92.1 x 131.1	1088 x 1548	2176 x 1548
	(6x4)	4"x 6"	105.0 x 156.1	1240 x 1844	2480 x 1844
	(5x7)	5"x 7"	131.1 x 181.0	1548 x 2138	1548 x 4276
	(6x8)	6"x 8"	156.1 x 206.2	1844 x 2436	1844 x 4872
	(6x9)	6"x 9"	156.1 x 232.0	1844 x 2740	1844 x 5480
DS80	(8x4)	8"x 4"	207.3 x 104.6	2448 x 1236	2448 x 2472
	(8x5)	8"x 5"	207.3 x 130.0	2448 x 1536	2448 x 3072
	(8x6)	8"x 6"	207.3 x 155.4	2448 x 1836	2448 x 3672
	(8x8)	8"x 8"	207.3 x 206.0	2448 x 2436	2448 x 4872
	(8x10)	8"x 10"	207.3 x 257.0	2448 x 3036	2448 x 6072
	A4 Length	8"x 11.7"	207.3 x 297.0	2448 x 3544	2448 x 7088
	(8x12)	8"x 12"	207.3 x 307.8	2448 x 3636	2448 x 7272

With the DS80 printer, the paper size (output size) can be designated as less than 8 inches, but the media used will be the DS80 8 inch width media.

## Chapter 3 Updating the Driver

Removing the driver is the same for both the “DS40” and the “DS80”. The following instructions are for the “DS40”, but if you are using the “DS80”, just read it as “DS80”.

In order to update the printer driver, follow the steps shown below.

### 1. Driver Removal

- (1) Before removing the printer-driver, shut down all other applications. Also, in the “Devices and Printers” window, select the printer icon of the printer you want to remove, check the bottom of the window that there are no documents in queue, and start removal of the driver.

**Note:** In Windows 8, DS40 icon does not appear if the printer is offline (if the printer with the power on is not connected). If you can not connect to the printer with the power on, remove the device in the procedure on the next page.

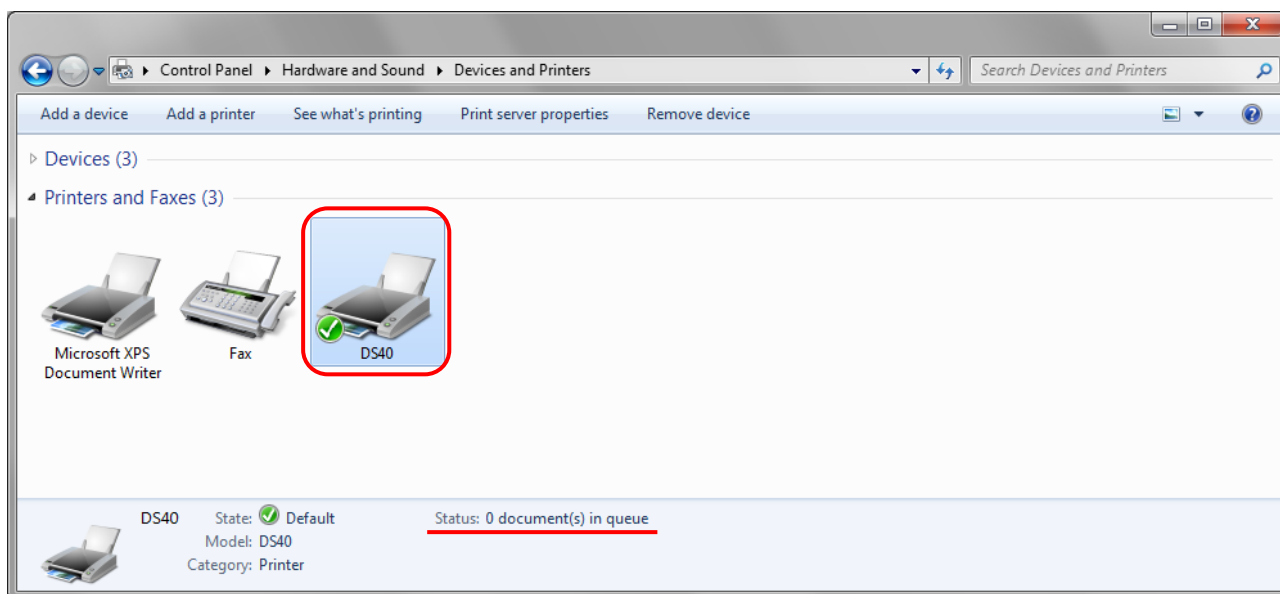


Fig 3.1 “Devices and Printers” window with the DS40 icon clicked

- (2) Select “Start”–“Control Panel”, and click on “View devices and printers” in the control panel.

In Windows 8, right click on the Start screen, select the right-under "All apps", select "Control Panel", click on "View devices and printers" in the Control Panel.

From the “Devices and Printers” window, select the DS40 printer, display the pull-down menu with the right click, and click on “Remove device”.

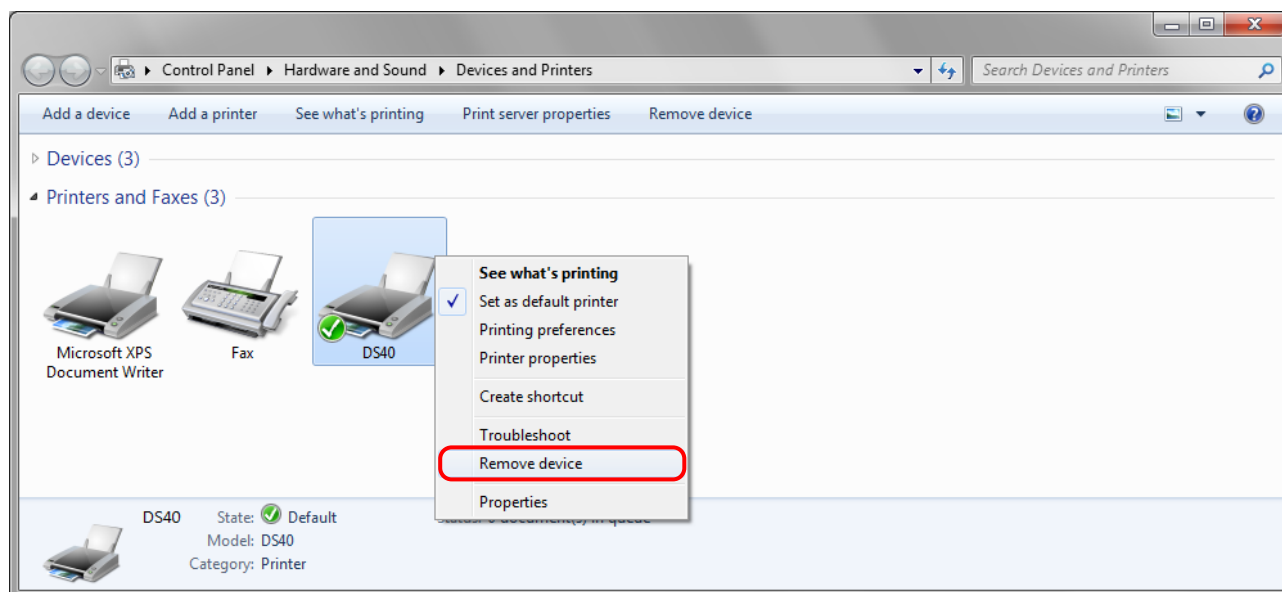


Fig 3.2 Devices and Printers window; DS40 right-clicked menu

In Windows 8, DS40 icon does not appear if the printer is offline (if the printer with the power on is not connected). If you can not connect to the printer with the power on, remove the device in the following procedure.

(i) Right click an empty area of the "Devices and Printers" window, select the "Device Manager".

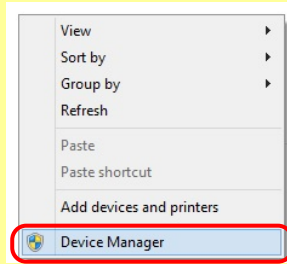


Fig 3.2.i Devices and Printers window; An empty area of the screen right clicked menu

(ii) Click on the check "Show hidden devices" in the menu "View".

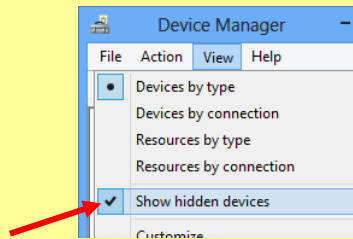


Fig 3.2.ii "Show hidden devices" menu

(iii) Right click on the "DS40" of "Printers", select "Uninstall".

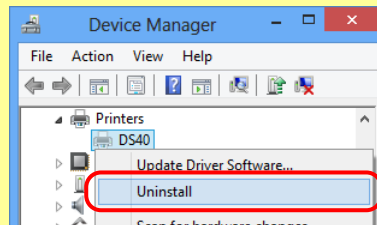


Fig 3.2.iii Devices Manager window; Printers – DS40 right clicked menu

(iv) When the "Confirm Device Uninstall" window appears, click on "OK".



Fig 3.2.iv Confirm Device Uninstall window

(3) When “Are you sure you want to remove this device?” appears, click on “Yes”.

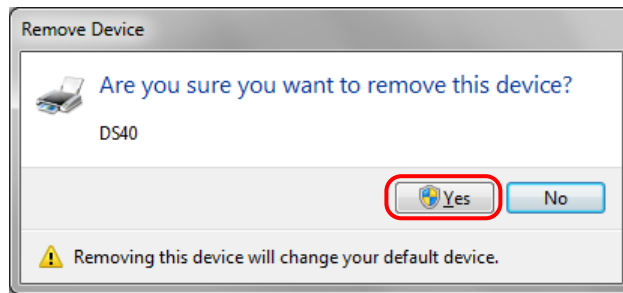


Fig 3.3 Remove device confirmation window

(4) After the DS40 printer has been removed, select another printer (for example: Fax), and click on “Print server properties” in the menu bar.

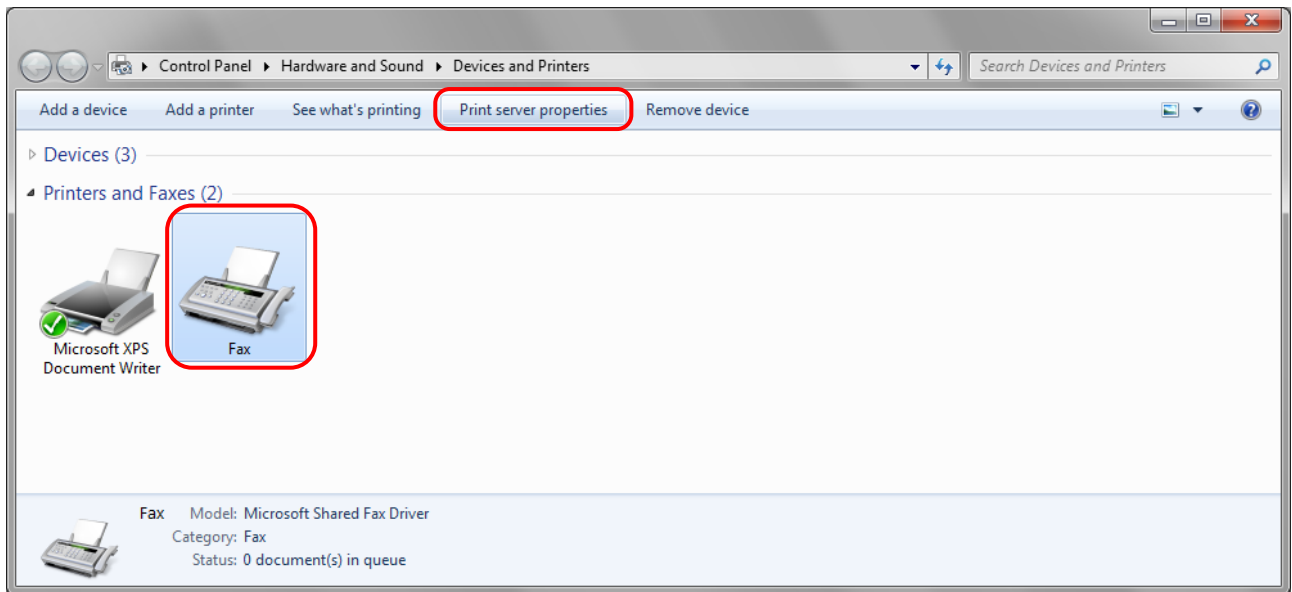


Fig 3.4 “Devices and Printers” window, showing the “Print server properties” menu

- (5) When the Print Server Properties window appears, click on the Drivers tab. From the list of installed printer drivers, select “DS40”, and click the “Remove” button.

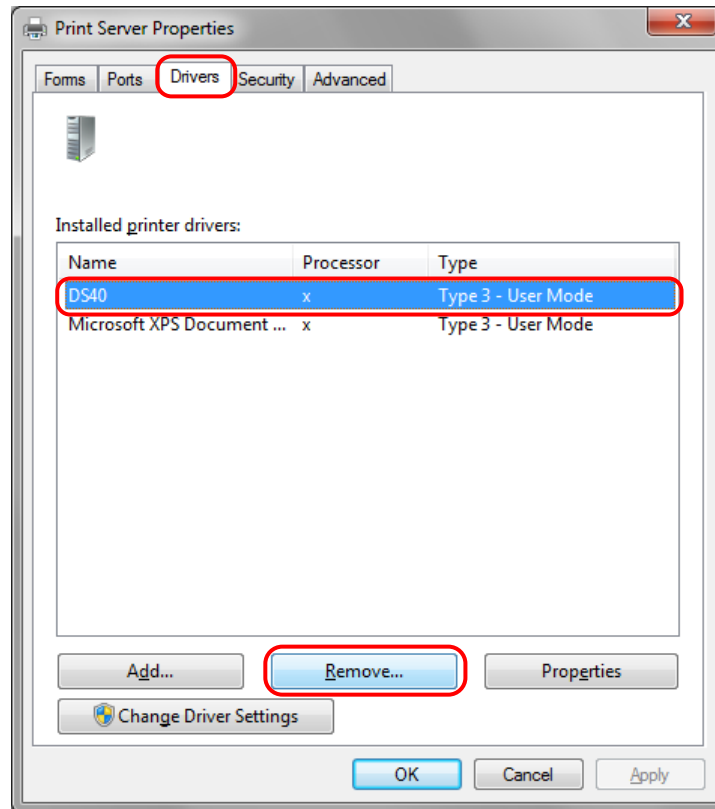


Fig 3.5 Print Server Properties window

- (6) When the Remove Driver and Package window appears, select “Remove driver only”, and click on the “OK” button. Removal of the driver package takes place in the next section “2. Uninstalling a Driver Package”.

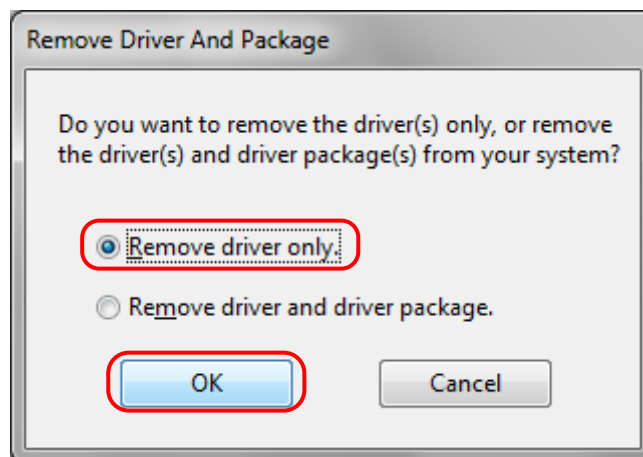


Fig 3.6 Remove Driver and Package window

(7) When the Print Server Properties confirmation window appears, click on the “Yes” button.

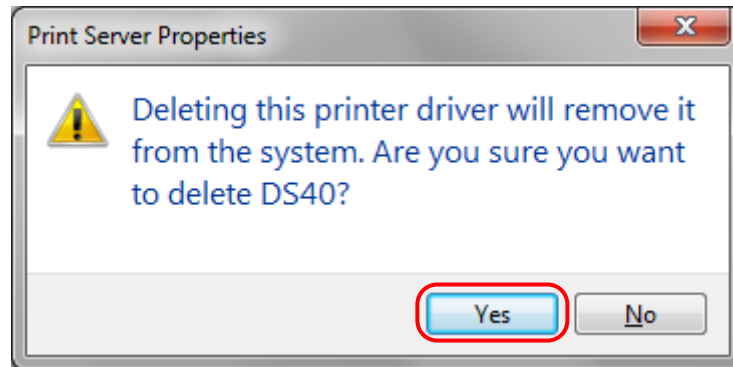


Fig 3.7 Print Server Properties confirmation window

(8) Using the Print Server Properties window, confirm that “DS40” has been removed, and click on the “Close” button. After removing the printer driver, uninstall the driver package.

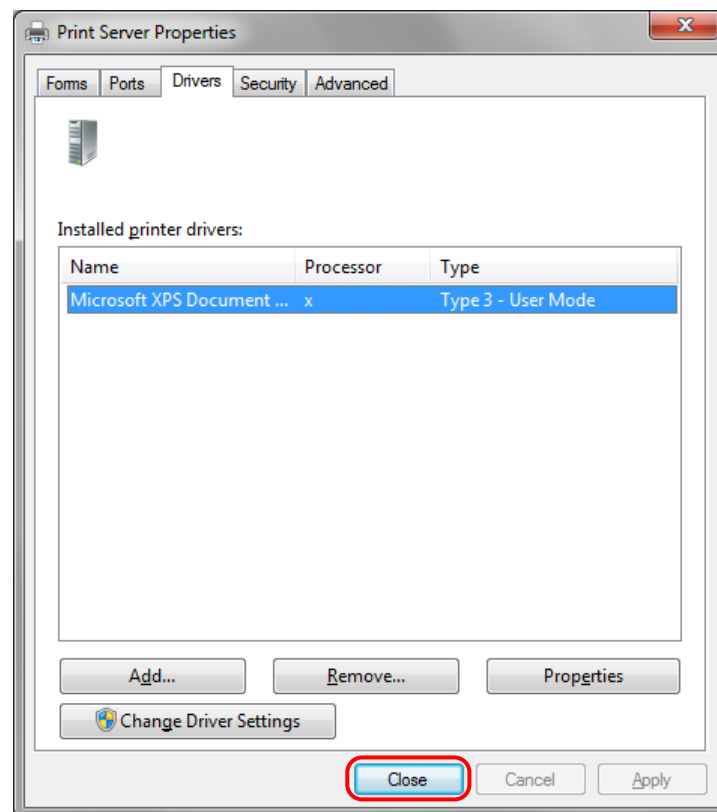


Fig 3.8 Print Server Properties window

## 2. Uninstalling a Driver Package

(1) Select “Start”, then “Control Panel”, and open the control panel. Click on “Uninstall a program” in the control panel.

In Windows 8, right click on the Start screen, select the right-under "All apps", select "Control Panel", click on "Uninstall a program" in the Control Panel.

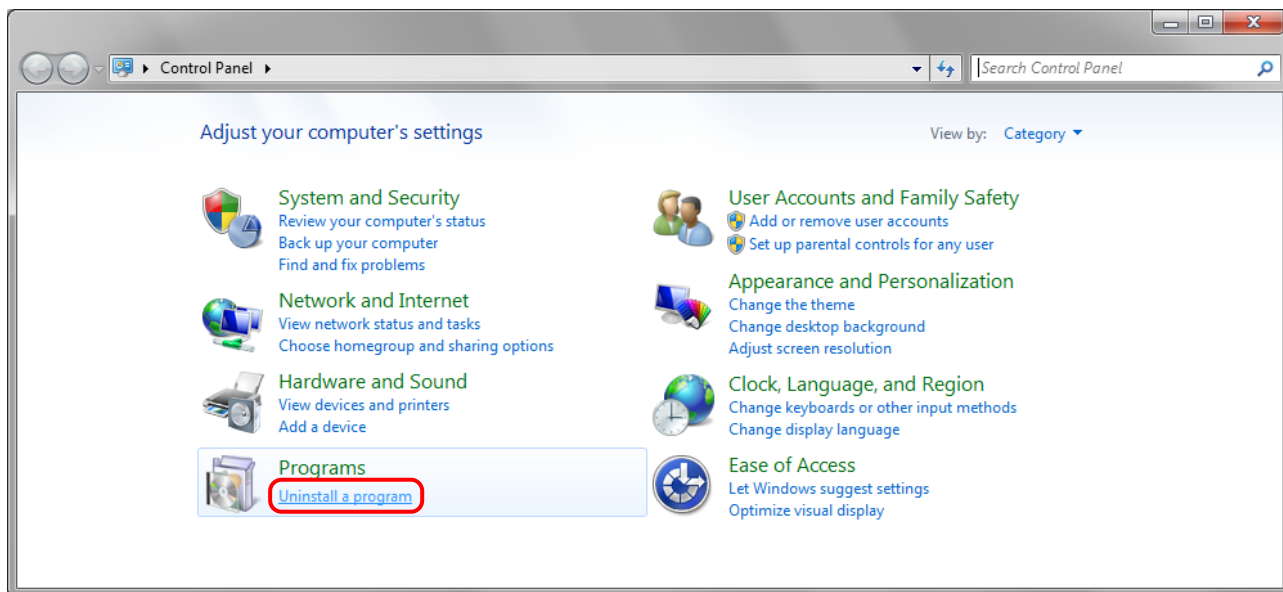


Fig 3.9 Control Panel

(2) When the “Uninstall or change a program” window appears, double-click on “Windows Driver Package – Dai Nippon Printing DS40 (mm/dd/yyyy x.x.x.x)” (mm/dd/yyyy = the date, x.x.x.x = the version).

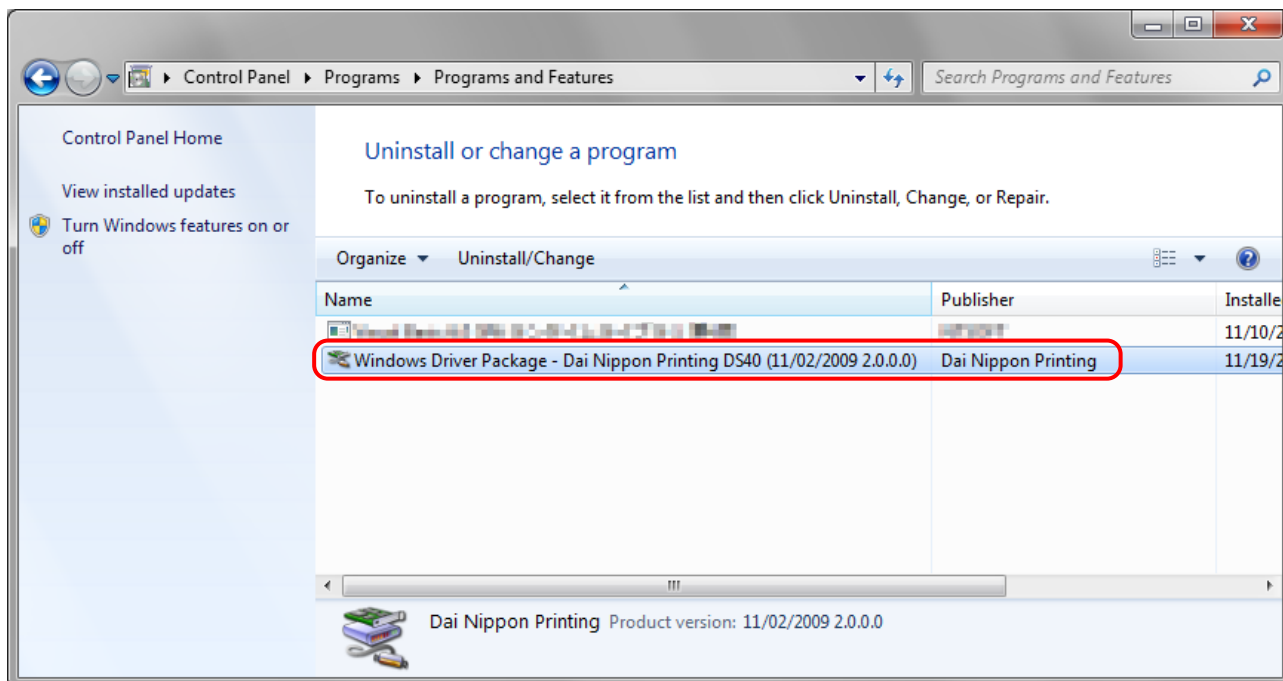


Fig 3.10 Uninstall a program



- (3) When the “Uninstall Driver Package” window appears, click on “Yes”.  
The Uninstall will be completed.  
After finished with uninstalling the driver package, reboot the computer.

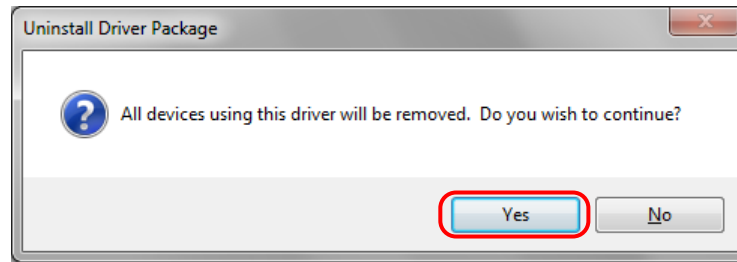


Fig 3.11 Uninstall confirmation window

### 3. Installing the printer-driver upgrade

After removing the printer and printer-driver, install the new printer-driver. For installation steps, please refer to Chapter 1 “Install”.

### 4. Rebooting the computer

After installation of the printer-driver is complete, be sure to reboot the computer.  
(Do not print immediately after installation. First reboot the computer.)

## Chapter 4 Driver Removal

For steps to remove the printer driver, refer to Chapter 3 “1. Driver Removal” and “2. Uninstalling a Driver Package”.

**Dai Nippon Printing Co., Ltd.**