

New color profiles have been created to use with the DS-Series and RX-Series printers. Use this instruction sheet to install the files on Windows® 7, Windows 8, Windows XP, and Mac OS operating systems.

In this Document...

Section A. Updating Windows 7 or Windows 8	1
Section B. Installing the Profile in Mac OS v10.4 and Newer	6
Section C. Installing the Profile in Windows XP	7

Section A.

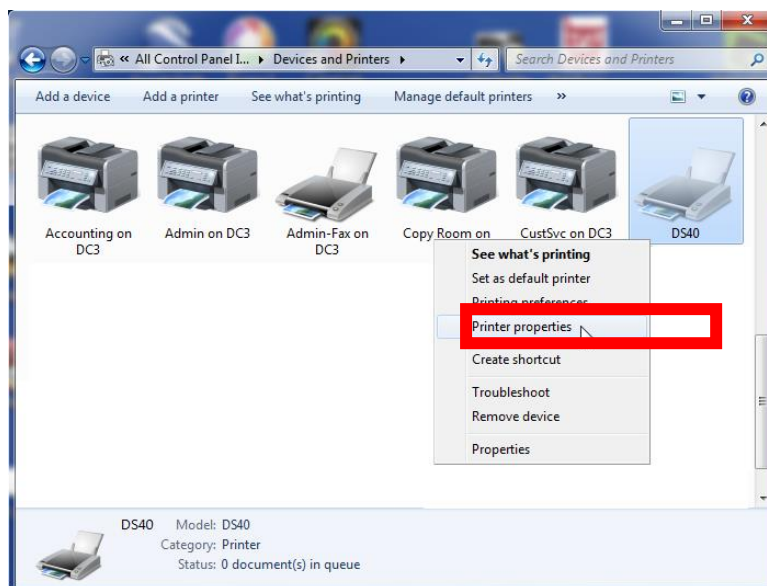
Updating Windows 7 or Windows 8

NOTE:

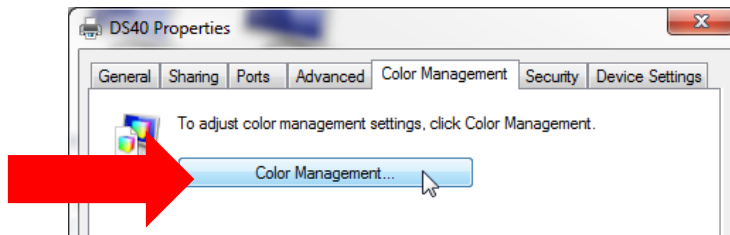
The images used in this section are from a Windows 7 system and are for reference only. Use the same steps to add the new color profiles to a Windows 8 system.

Printer	ICM Name
DS40 Printer	DS40_20140228.icm
DS80 Printer	DS80_20140228.icm
RX1 Printer	RX1_20140228.icm

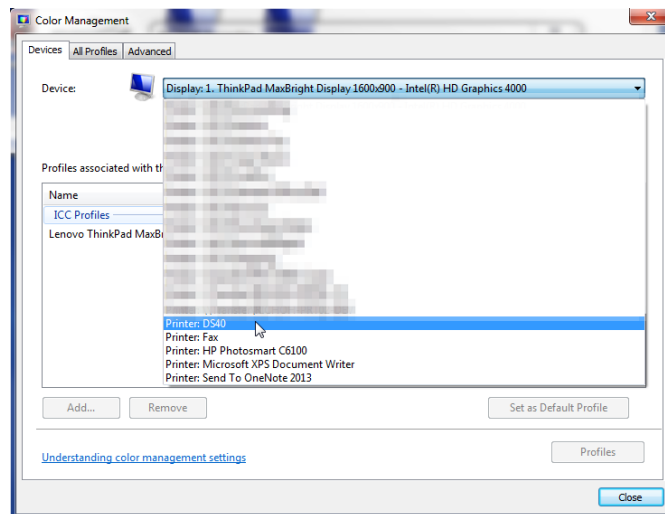
1. Copy the ICM file and paste it in the following location:
Windows > System32 > Spool > Drivers > Color
2. From the control panel or the Start menu, locate the Devices and Printers option.
3. When the Devices and Printers window opens, locate your printer and right-click on the desired printer.
4. Select **Printer Properties** from the drop-down menu.



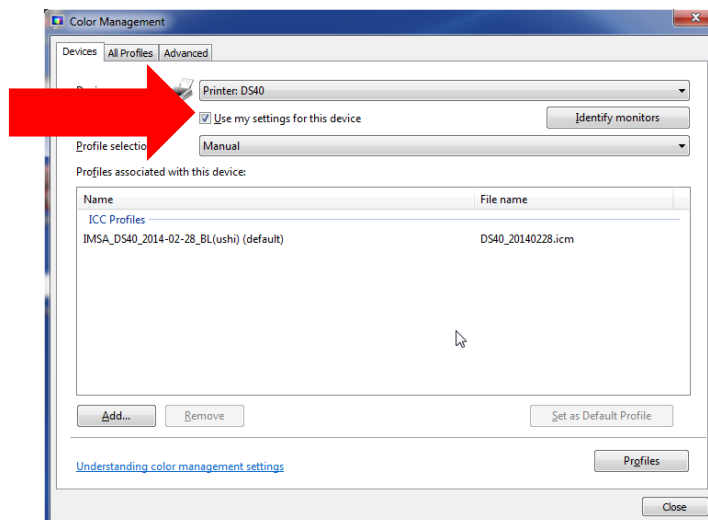
- From the Printer Properties menu, select the **Color Management** tab, then click the **Color Management** button.



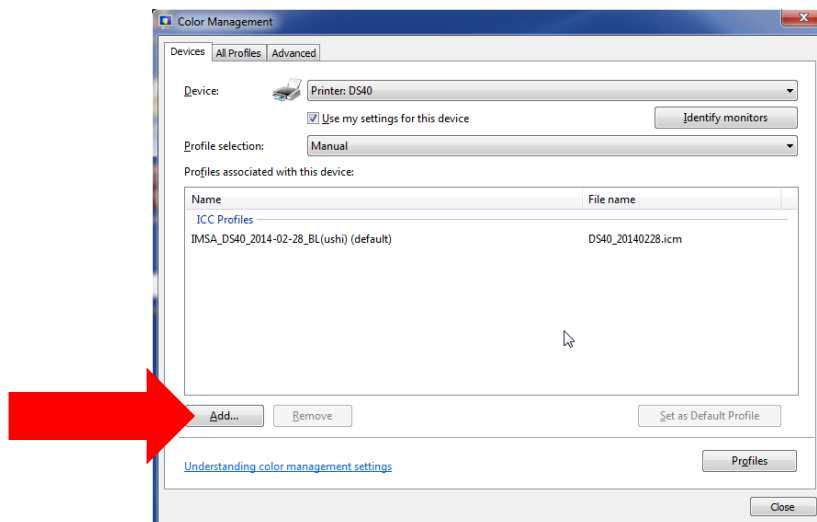
- Select your printer from the **device** drop-down list.



- Verify that Use my settings for this device is **checked** and that Profile selection is set to **Manual**.



8. Click the **Add** button under the *Profiles associated with the device* section.



9. From the list of available ICM files, select the correct ICM file, and click **OK**.

ATTENTION:

Make sure you are loading the correct ICM for your printer (DS40, DS80, and RX1).

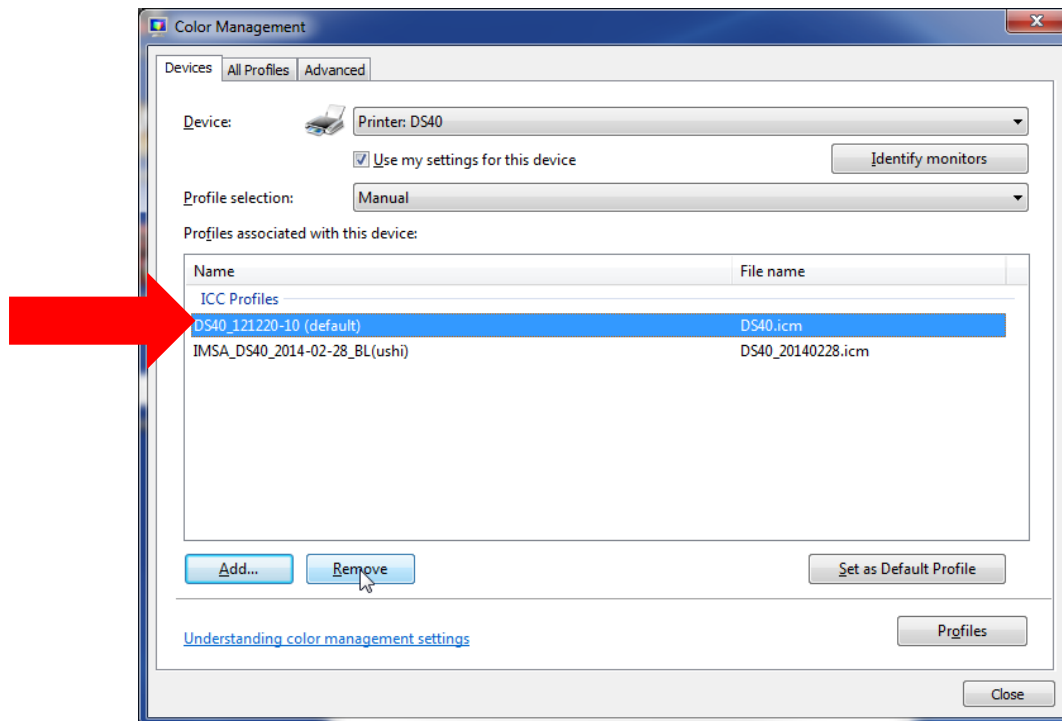
If you followed the instructions in step 1 on page 1, your new ICM profile is located in the following directory:

Windows > System32 > Spool > Drivers > Color

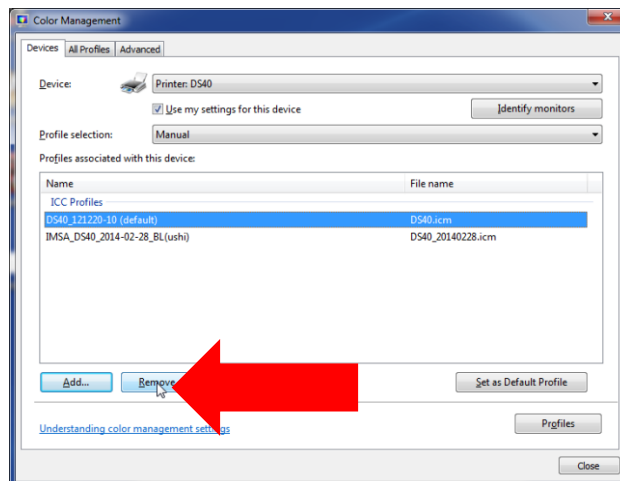
10. Verify that the new ICM is displayed under the *Profiles associated with the device* section. Do this by checking that the ICM file name matches the printer ICM name in the chart at the beginning of this section (shown with a red arrow in the image below).

NOTE:

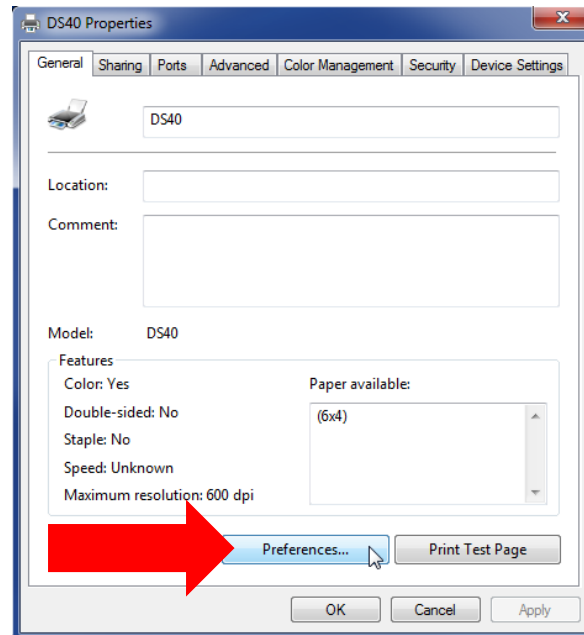
The old ICM file will still be designated as the default ICM at this point (highlighted in blue in the image below).



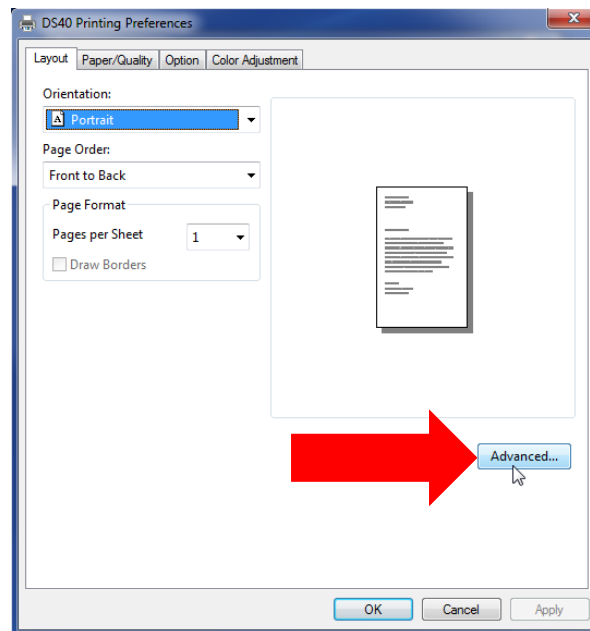
11. Once you have verified the new profile is loaded, click the **old profile** to select it, then click **Remove**.



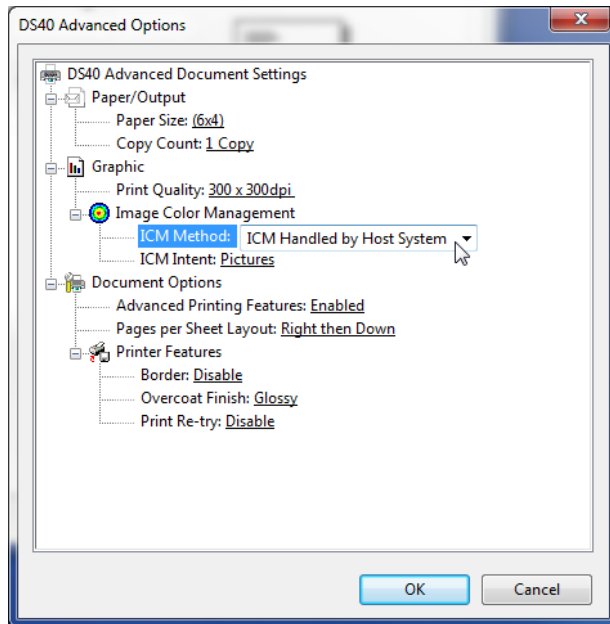
12. The newly loaded ICM profile is now the default profile. If you do not see “(default)” next to the profile name, select the profile, then press the **Set as Default Profile** button.
13. Close the Color Management window by pressing the **Close** button in the lower right corner of the window.
14. Click on the **General** tab in the Printer Properties window and click the **Preferences...** button



15. On the Layout tab, click on the **Advanced** button.



16. In the Advanced Options window, locate the Image Color Management option and select **ICM Handled by Host System**.



Printer	ICM Name
DS40 Printer	DS40_20140228.icc
DS80 Printer	DS80_20140228.icc
RX1 Printer	RX1_20140228.icc

17. Close any open system windows.

Repeat these instructions for the any other printers before rebooting the computer.

Section B. Installing the Profile in Mac OS v10.4 and Newer

- Copy the ICC file and paste it in the following location:
Mac HD > Library > Colorsync > Profiles > Profiles
- Your ICC profile is now ready for use in any of your software applications that require an ICC profile.

NOTE:

If you are using a newer version of Mac OS, you may need to enter your administrator password to install a new color profile.

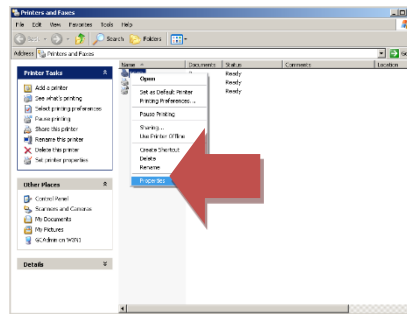
3. Close any open system windows.

Repeat these instructions for the any other printers before rebooting the computer.

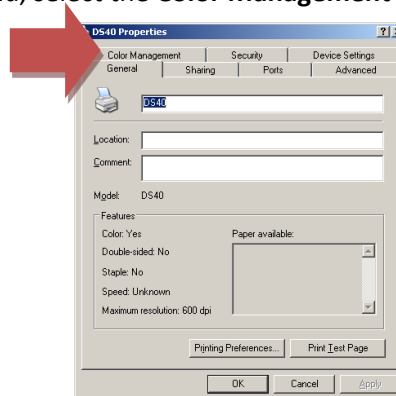
Section C. Installing the Profile in Windows XP

1. Copy the ICM file and paste it in the following location:
Windows > System32 > Spool > Drivers > Color
2. From the Printers and Faxes folder, right-click on the desired printer, and select **Properties** from the drop-down list.

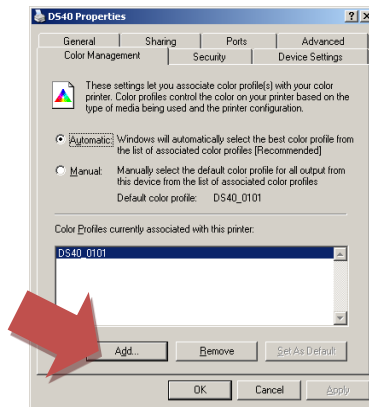
Printer	ICM Name
DS40 Printer	DS40_20140228.icm
DS80 Printer	DS80_20140228.icm
RX1 Printer	RX1_20140228.icm



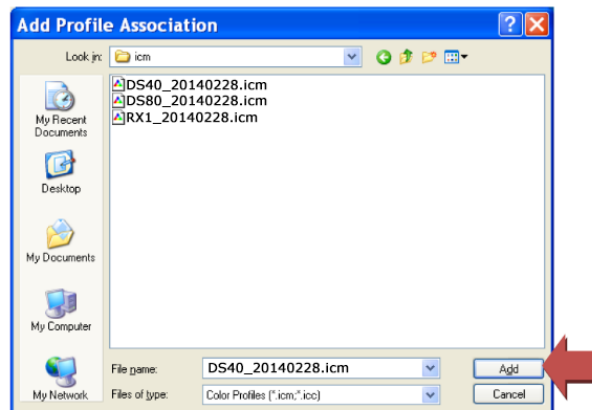
3. From the Printer Properties menu, select the **Color Management** tab.



- On the Color Management tab, under the *Color Profiles currently associated with the printer* section, click the **Add** button.



- The default folder for saved ICM files opens. Browse to the new ICM file you saved in the following directory:
Windows > System32 > Spool > Drivers > Color
- When you have selected the correct ICM profile, click **Add**.

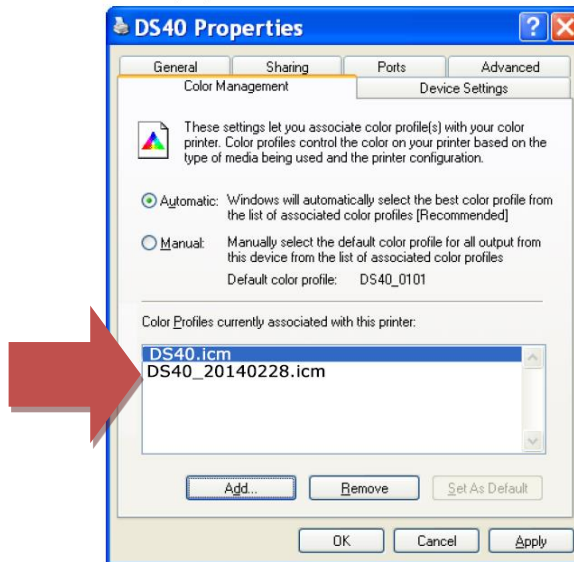


ATTENTION:

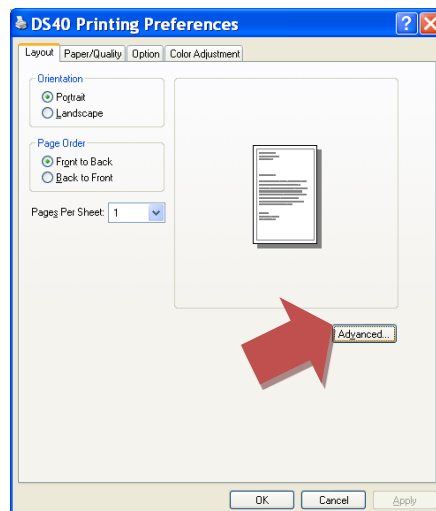
Make sure you are loading the correct ICM for your printer (DS40, DS80, or RX1).

If you load the wrong profile, select the incorrect profile on the **Color Management Tab**, and click **Remove** before adding the correct profile.

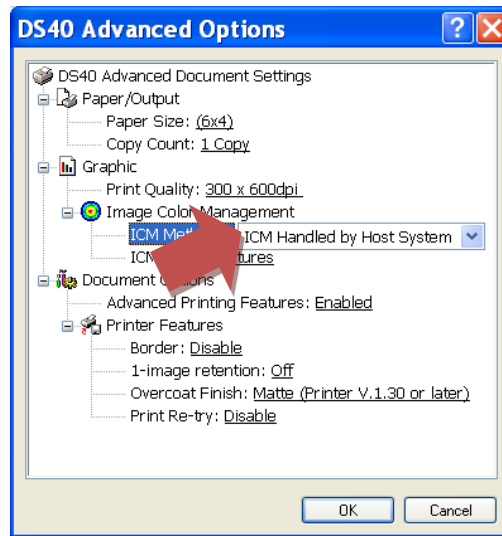
7. Verify that the new ICM is displayed under the *Color Profiles currently associated with the printer* section (shown with red arrow).



8. Once you have verified the new profile has been loaded, click on the **old profile** to select it and click **Remove**. Your new profile is now the default profile.
9. Click the **General** tab in the Printer Properties window to open the General Properties tab. Click **Printing Preferences**.
10. From the Printing Preferences window, verify that the Layout tab is selected.
11. Click the **Advanced** button.



12. In the Advanced Options window, locate the **Image Color Management** option.
13. Make sure that **ICM Handled by Host System** is selected.



14. Close any open system windows.

Repeat these instructions for the any other printers before rebooting the computer.