



WIRELESS PRINT SERVER
WPS-1 v1.1

User Guide

License Agreements

SOFTWARE END USER LICENSE AGREEMENT (EULA). PLEASE READ THE FOLLOWING TERMS AND CONDITIONS CAREFULLY BEFORE USING THIS SOFTWARE. USING THIS SOFTWARE INDICATES YOUR ACCEPTANCE OF THESE TERMS AND CONDITIONS. IF YOU DO NOT AGREE WITH THESE TERMS AND CONDITIONS, DO NOT DOWNLOAD OR USE THIS SOFTWARE. This Software License Agreement (the "Software License Agreement") is an agreement entered into by and between you (hereinafter referred to as "You" or "Your") and DNP Imagingcomm America Coropration (DNP IAM) (the "Licensor") for any and all software and documentation provided by the Licensor (the "Software"). The Software includes items available either by Internet download, contained in a CD/DVD or contained within a 3rd party software installer. By using the Software, You agree to the terms of this Software License Agreement. The Licensor grants You a non-exclusive, non-transferable license to use one copy of the Software in object code only.

OWNERSHIP RETAINED BY LICENSOR. The Licensor owns all title and copyrights in and to the Software and the Licensor has the full right and authority to grant the license granted herein. Your license does not give You any title or ownership in the Software, nor is it a sale of any rights in the Software. The only right granted to You is the right to use the Software in accordance with the terms of this Software License Agreement. All rights not specifically granted to You under this Software License Agreement are reserved by the Licensor. You may make only a single copy of the Software as a backup copy, provided that it includes all notices and markings, including copyright, trademark and other proprietary notices as on the original. Such backup copy of the Software may not be in use at any time unless the original Software is damaged beyond use, and both the original and the copy must remain in Your possession and control. You may not copy the software onto any public network. You may not, and You may not allow others to modify, disassemble, decompile, translate, reverse engineer, reproduce, make derivative works of or enhance the Software. You may not, and You may not allow others to rent, lease, sell, sub license, export or otherwise transfer the Software to any other person. In addition to any other rights it may have, the Licensor may terminate this Software License Agreement if You fail to comply with the terms and conditions hereof. In such event, You must cease all use of the Software and destroy all copies of the Software and all of its component parts. At the Licensor's sole discretion, the Licensor may from time to time provide You with updates to the Software. Any such updates shall become part of the Software licensed to You hereunder and subject to all of the terms and conditions of this Software License Agreement.

DISCLAIMER OF WARRANTIES. The Licensor expressly disclaims any and all warranties relative to the Software. THE SOFTWARE IS PROVIDED "AS IS," WITHOUT WARRANTY OF ANY KIND, EXPRESS OR IMPLIED, INCLUDING, WITHOUT LIMITATION, THE IMPLIED WARRANTIES OF MERCHANTABILITY AND FITNESS FOR A PARTICULAR PURPOSE, NON-INFRINGEMENT, COURSE OF DEALING AND USAGE OF TRADE. YOU HEREBY ASSUME THE ENTIRE RISK AS TO THE QUALITY AND PERFORMANCE OF THE SOFTWARE.

LIMITATION OF LIABILITY. In no event shall the Licensor be liable for any direct, special, incidental, indirect or consequential damages whatsoever to You (including, without limitation, damages for loss of profits, sales or data or for business interruption) arising out of the use of or inability to use the Software, even if the Licensor has been advised of the possibility of such damages. In any event, the Licensor's entire liability under any provision shall be limited to the amount actually paid by You for the Software. Because some states and jurisdictions do not allow the exclusion or limitation of liability, the above limitation may not apply to You. If any provision of the Software License Agreement is declared by a court of competent jurisdiction to be invalid for any reason, such invalidity shall not affect the remaining provisions hereof.

GOVERNING LAW. This Software License Agreement shall be governed by the laws of the State of North Carolina without regard to conflict of laws principles. You and the Licensor hereby consent to the exclusive venue and jurisdiction of the state and federal courts located in Mecklenburg County, North Carolina.

TAXES. You are responsible for all taxes or charges imposed by any government or regulatory authority with respect to the delivery and use of the Software, but exclusive of any taxes based upon the Licensor's net income.

TERM. This License Agreement is effective until terminated. You may terminate this License Agreement by ceasing to use the Software and, if applicable, returning the Software to the Licensor. Licensor may terminate this License Agreement if You breach any of the terms and conditions. Upon termination of this License Agreement for any reason, You shall cease using the Software and, if applicable, return the Software to the Licensor. All provisions of this Agreement relating to disclaimers of warranties, limitation of liability, remedies, or damages, and Licensor's proprietary rights shall survive termination.

ACKNOWLEDGMENTS. The ICC profiles provided by DNP Imagingcomm America Coropration are prepared using the technology of X-Rite, Incorporated. YOU ACKNOWLEDGE YOU HAVE READ AND UNDERSTAND THIS AGREEMENT AND AGREE TO BE BOUND BY ITS TERMS. YOU FURTHER AGREE THAT THIS AGREEMENT IS THE COMPLETE AND EXCLUSIVE STATEMENT OF THE AGREEMENT BETWEEN YOU AND LICENSOR, AND SUPERSEDES ANY PROPOSAL OR PRIOR AGREEMENT, ORAL OR WRITTEN, AND ANY OTHER COMMUNICATIONS RELATING TO THE SOFTWARE ADDRESSED IN THIS AGREEMENT.

The information contained in this document represents the current view of DNP Imagingcomm America Coropration on the issues discussed as of the date of publication. Because DNP Imagingcomm America Coropration must respond to changing market conditions, it should not be interpreted to be a commitment on the part of DNP Imagingcomm America Coropration, and DNP Imagingcomm America Coropration cannot guarantee the accuracy of any information presented after the date of publication. This document is for informational purposes only. DNP Imagingcomm America Coropration MAKES NO WARRANTIES, EXPRESSED OR IMPLIED, AS TO THE INFORMATION IN THIS DOCUMENT.

Complying with all applicable copyright laws is the responsibility of the user. Without limiting the rights under copyright, no part of this document may be reproduced, stored in or introduced into a retrieval system, or transmitted in any form or by any means (electronic, mechanical, photocopying, recording, or otherwise), or for any purpose, without the express written permission of DNP Imagingcomm America Coropration

DNP Imagingcomm America Coropration may have patents, patent applications, trademarks, copyrights, or other intellectual property rights covering subject matter in this document. Except as expressly provided in any written license agreement from DNP Imagingcomm America Coropration, the furnishing of this document does not give you any license to these patents, trademarks, copyrights, or other intellectual property.

Tomo™, Hot Folder Print™, PrintCenter™, DS-Series Printers™, and PrintTurbine™ are trademarks and Nexlab® is a registered trademark of DNP Imagingcomm America Coropration. PrintRush® and Party Print® are registered trademarks of Dai Nippon Printing Company LTD. Apple, the Apple logo, iPad, and iPhone are trademarks of Apple Inc., registered in the U.S. and other countries. App Store is a service mark of Apple Inc. Amazon is a trademark of Amazon.com Inc. or its affiliates. Android and Google Play are trademarks of Google, Inc. SD, SDHC and SDXC are trademarks or registered trademarks of SD-3C, LLC in the United States, other countries or both. The names of actual companies and products mentioned herein may be the trademarks of their respective owners.

DNP Imagingcomm America Coropration * 4524 Enterprise Dr NW * Concord, NC 28027 * USA

© 2000-2015 DNP Imagingcomm America Coropration All rights reserved.

Compliance Notices

Warning: Changes or modifications to this device not expressly approved by DNP Imagingcomm America Coropration could void the user's authority to operate the equipment.

Note: This equipment has been tested and found to comply with the limits for a Class B digital device, pursuant to Part 15 of the FCC Rules. These limits are designed to provide reasonable protection against harmful interference in a residential installation. This equipment generates, uses, and can radiate radio frequency energy and, if not installed and used in accordance with the instructions, may cause harmful interference to radio communications. However, there is no guarantee that interference will not occur in a particular installation. If this equipment does cause harmful interference to radio or television reception, which can be determined by turning the equipment off and on, the user is encouraged to try to correct the interference by one or more of the following measures:

- Reorient or relocate the receiving antenna.
- Increase the separation between the equipment and receiver.
- Connect the equipment into an outlet on a circuit different from that to which the receiver is connected.
- Consult the dealer or an experienced radio/TV technician for help.

This equipment complies with FCC radiation exposure limits set forth for an uncontrolled environment. This equipment is in direct contact with the body of the user under normal operating conditions. This transmitter must not be co-located or operating in conjunction with any other antenna or transmitter.

Under Industry Canada regulations, this radio transmitter may only operate using an antenna of a type and maximum (or lesser) gain approved for the transmitter by Industry Canada. To reduce potential radio interference to other users, the antenna type and its gain should be so chosen that the equivalent isotropically radiated power (e.i.r.p.) is not more than that necessary for successful communication. This is a controlled document. To be sure you have the latest version of this Procedure, compare this document revision to the revision listed in the Document Control database. If you find this document is not current, discard and get the latest version from the Document Control database.

Conformément à la réglementation d'Industrie Canada, le présent émetteur radio peut fonctionner avec une antenne d'un type et d'un gain maximal (ou inférieur) approuvé pour l'émetteur par Industrie Canada. Dans le but de réduire les risques de brouillage radioélectrique à l'intention des autres utilisateurs, il faut choisir le type d'antenne et son gain de sorte que la puissance isotrope rayonnée équivalente (p.i.r.e.) ne dépasse pas l'intensité nécessaire à l'établissement d'une communication satisfaisante.

NOM 121 – La operación de este equipo está sujeta a las siguientes dos condiciones: (1) es posible que este equipo o dispositivo no cause interferencia perjudicial y (2) este equipo o dispositivo debe aceptar cualquier interferencia, incluyendo la que pueda causar su operación no deseada.

Importer:

DNP PHOTO IMAGING EUROPE SAS
Le Raphael Paris Nord 2 22 Avenue de Nations BP 51077
Villepinte, 95948 ROISSY CH DE GAULLE CEDEX, FRANCE

Manufacturer:

RSH-Tech Company Limited
6/F, Building B, 3rd Industrial Area, JiuWei, XiXiang, BaoAn, ShenZhen, China



If you want to dispose of this product, do not mix with general household waste. There is a separate collection system for used electronics products in accordance with legislation under the WEEE Directive. For details, please consult with your dealer.



RSH-TECH Company Limited hereby declares that this Wireless Print Server is in compliance with the essential requirements and other relevant provisions of Directive 1999/5/EC. For details, please access the URL: <http://www.dnpphoto.eu/en/>

Par la présente RSH-TECH Company Limited déclare que l'appareil est conforme aux exigences essentielles et aux autres dispositions pertinentes de la directive 1999/5/CE. Pour toute information complémentaire, veuillez consulter l'URL suivante: <http://www.dnpphoto.eu/fr/>

Hiermit erklärt RSH-TECH Company Limited, dass sich das Gerät Wireless Print Server in Übereinstimmung mit den grundlegenden Anforderungen und den übrigen einschlägigen Bestimmungen der Richtlinie 1999/5/EG befindet. Weitere Informationen erhältlich unter: <http://www.dnpphoto.eu/de/>

Por medio de la presente RSH-TECH Company Limited declara que el Wireless Print Server cumple con los requisitos esenciales y cualesquiera otras disposiciones aplicables o exigibles de la Directiva 1999/5/CE. Para mayor información, por favor consulte el siguiente URL: <http://www.dnpphoto.eu/es/>

Con la presente RSH-TECH Company Limited dichiara che questo Wireless Print Server è conforme ai requisiti essenziali ed alle altre disposizioni pertinenti stabilite dalla direttiva 1999/5/CE. Per ulteriori dettagli, si prega di consultare il seguente URL: <http://www.dnpphoto.eu/it/>

RSH-TECH Company Limited tímto prohlašuje, že tento Wireless Print Server je ve shodě se základními požadavky a dalšími příslušnými ustanoveními směrnice 1999/5/ES. Podrobnosti lze získat na následující URL: <http://www.dnpphoto.eu/en/>

RSH-TECH Company Limited vakuuttaa täten että Wireless Print Server tyyppinen laite on direktiivin 1999/5/EY oleellisten vaatimusten ja sitä koskevien direktiivin muiden ehtojen mukainen. Halutessasi lisätietoja, käy osoitteessa: <http://www.dnpphoto.eu/en/>

Με την παρούσα η RSH-TECH Company Limited δηλώνει ότι Wireless Print Server συμμορφώνεται προς της ουσιαστικές απαιτήσεις και τις λοιπές σχετικές διατάξεις της οδηγίας 1999/5/EK. Για λεπτομέρειες παρακαλούμε όπως ελέγξετε την ακόλουθη σελίδα του διαδικτύου: <http://www.dnpphoto.eu/en/>

Niniejszym RSH-TECH Company Limited oświadcza, że Wireless Print Server jest zgodne z zasadniczymi wymaganiami oraz innymi stosownymi postanowieniami Dyrektywy 1999/5/WE. Szczegółowe informacje znaleźć można pod następującym adresem URL: <http://www.dnpphoto.eu/en/>

RSH-TECH Company Limited declara que este Wireless Print Server está conforme com os requisitos essenciais e outras disposições da Directiva 1999/5/CE. Para mais informações, por favor consulte o seguinte URL: <http://www.dnpphoto.eu/en/>

CONTENTS

1. Before You Begin

Documentation Conventions	9
Text Elements	9
Text Treatments.....	9
Important Safety Instructions	9

2. Introduction

What is WPS-1?	11
What devices can send prints to my WPS-1?	11
System Requirements	12

3. Installation

Setting Up the WPS-1 System	13
Connecting to the WPS-1 Wireless Network	14
Connecting the WPS-1 to an Existing Network	14

4. Using Android Devices with WPS-1

Using Android Devices for Web Transfers (Mobile Apps)	15
Configuring Android Devices for Web Transfers (Mobile Apps).....	15
Printing from Android Devices using the Share Option	15
Printing from Android Devices using the WPS Print 2 App	16
Printing from Android Devices using the WPS Camera App	19
Using the WPS Status App to Monitor Your Network.....	20
Using Android Devices for FTP Transfers	22
Configuring Android for FTP Transfers	22
Printing from Android Devices Using FTP Transfer	23
Printing Errors	24
Print Size Chart	25

5. Using Apple Devices with WPS-1

Using Apple Devices for Web Transfers (Mobile Apps)	27
Configuring Apple Devices for Web Transfers (Mobile Apps).....	27
Printing from Apple Devices using the Share Sheet Option	27
Printing from Apple Devices using the WPS Print 2 App	28
Printing from Apple Devices using the WPS Camera App	30
Using the WPS Status App to Monitor Your Network.....	32
Using Apple Devices for FTP Transfers	34
Configuring Apple Devices for FTP Transfers.....	34
Printing from Apple Devices using FTP Transfers	35

Printing Errors	36
Print Size Chart	37
6. Using a Windows PC with the WPS-1	
Using Windows PC with the Hot Folder Print Options (HFP)	39
Configuring a Windows PC for HFP	39
Printing from a Windows PC using HFP	40
Using a Windows PC and Native Print Drivers	41
Configuring a Windows PC using Native Print Drivers	41
Printing from a Windows PC using Native Print Drivers	47
Printing Errors	48
Print Size Chart	49
7. Using a Mac with the WPS-1	
Using a Mac for Hot Folder Printing (HFP)	51
Configuring a Mac for HFP Printing	51
Printing from a Mac (HFP Transfer)	53
Using a Mac and Native Print Drivers	53
Configuring a Mac using WPS-1 Native Print Drivers	53
Printing from a Mac using Native Print Drivers	59
Adding ICM Files	59
Printing Errors	61
Print Size Chart	62
8. Using a Digital Camera with the WPS-1	
Using Digital Cameras for Wi-Fi Transfers	65
Printing from Digital Cameras Using a Mobile Device	65
Using Digital Cameras for FTP Transfers	66
Configuring Digital Cameras for FTP Transfers	66
Printing from Digital Cameras Using FTP	66
Print Size Chart	67
9. Custom Borders	
Custom Border Requirements	69
Creating Custom Borders	69
Adding the Custom Borders to the WPS-1	70
Enabling Borders	70
Troubleshooting Borders	72
Borders are only enabled for one print size	72
I can't enable different borders for different print sizes	72
My border isn't printing	72
10. Advanced Actions	
About This Chapter	73
Using the Configuration Web Page	73
Accessing the Configuration Web Page	74

Changing the General Configuration Settings	74
Configuring Image Archiving	74
Changing the Test Print Setting	76
Changing the Default Language	76
About the WPS-1 Region Setting	78
Changing the Printing Settings	78
Changing the Printing Size Options	78
Changing the Print Finish	79
Changing the Print Pooling Settings	80
Configuring FTP Settings	81
Configuring FTP	81
Configuring Borders	82
Changing the Number of Copies Printed	83
Selecting the Printer Queue	84
Selecting Borders	85
Configuring HFP Settings	87
Configuring HFP	87
Configuring Borders	88
Changing the Number of Copies Printed	89
Selecting Borders	90
Configuring the Networking Options	91
Changing the File Lock Wait Time	91
Configuring SLP	92
Configuring WebPut	93

Before You Begin

Use the information in this chapter to better understand this document and any standard procedures or warnings that may come with your product.

Documentation Conventions

When using this document, several text elements and treatments are repeated throughout. The following is an explanation of these symbols and headings:

Text Elements



Attention

This denotes important information concerning safety when working with the equipment. Failure to comply with an Attention statement can cause you injury or harm or cause damage to the system.



Note

This signifies convenient or useful instructions.

Text Treatments

Bold Text – Indicates items you can select, such as buttons and menu entries.

Italic Text – Indicates variable text or placeholders for information, such as user names and directory paths. When entering directory paths and so forth, the word in italics should not be typed, but should be replaced by the appropriate text. Italic text also introduces new words and is occasionally used for emphasis in text.

Monospace – Distinguishes information that is displayed on the screen, as well as the text that you should enter.

Important Safety Instructions

Safety is paramount when installing and operating the system. These safety instructions are to protect you and the customer and the overall public. The following bullet points apply to the safety instructions in this manual:

- ❖ Read all of these instructions before setting up, installing, and operating your system.
- ❖ Follow all warnings, safety precautions, and notices for all procedures in this manual.
- ❖ When in doubt, stop what you are doing and reassess the safety of the situation or procedure. Never continue with a step or procedure when there is the slightest doubt regarding safety.
- ❖ Save these instructions for future reference.



Introduction



What is WPS-1?

Print photos wirelessly. The DNP Wireless Print Server (WPS-1) allows you to print glossy and matte photos to any supported DNP printer. You can also send your prints to up to two (2) DNP printers simultaneously. Print photos from up to 30 feet away. Your WPS-1 wireless print server works with the following DNP printers:

- ◆ DS40
- ◆ DS80
- ◆ RX1
- ◆ DS620 (only available in designated sales regions)
- ◆ DS620A (only available in designated sales regions)

Manage your system wirelessly. Use the WPS-1 mobile apps to manage your network and printers while you're on-the-move. With the WPS Print 2 Application, you can print from any mobile device. In many cases you can even print from within other photo apps by using the share functionality! Use the WPS Status app to monitor your printer media usage, check to make sure your prints were transmitted, and troubleshoot network issues. Connect via Wi-Fi using a Mac or PC, and you can change your system configuration - such as matte vs. glossy prints, default print quantities, and border settings.

What devices can send prints to my WPS-1?

The WPS-1 device is compatible with the following input devices. You can connect up to five input devices at the same time, using any combination of devices as long as each device is connected wirelessly to the WPS-1 network.

- ◆ Windows PCs (hot folder transfer or printer driver functionality)
- ◆ Mac OS X computers (hot folder transfer or printer driver functionality)
- ◆ iOS 8 or later mobile devices (i.e. iPad/iPhone) (WPS Print mobile app)
- ◆ Android 4.4 (Kit Kat) or later devices (WPS Print mobile app)
- ◆ Digital cameras that send images wirelessly to a mobile device (WPS Print mobile app)
- ◆ Other digital cameras with FTP camera-to-printer capability (FTP transfer or by use of supported third party devices like CamRanger™)

- ◆ At this time, Wi-Fi enabled SD cards (such as Eye-Fi®) are *not* supported.

System Requirements



WPS-1 supports the following:

PC	Windows 7 and 8.1
Mac	OS X 10.6 and later
iPhone™/iPad™	iOS 8 or later
Android™	Version 4.4 (KitKat) or later
Supported Printers	DS40
	DS80
	RX1
	DS620/DS620A
Printer Media Sizes	DS40 (any media size supported by the printer)
	DS80 (any media size supported by the printer)
	RX1 (any media size supported by the printer)
	DS620/DS620A (any media size supported by the printer)



Note

Depending on your sales region, not all media sizes may be available for your printer. See "Printing with WPS-1" on page 89 for more information on print sizes.

Installation

Your Wireless Print Server (WPS-1) box contains your WPS-1 unit and a power cable.



Figure 1. WPS-1 Back View of Ports

Setting Up the WPS-1 System



Note

Be sure you plug in and turn ON the printer before you connect to the WPS-1 device. When WPS-1 starts, it automatically configures the network for the connected printers. If you change printer connections, unplug and plug the WPS-1 unit back in to reconfigure the network for the new printer(s).

1. Turn ON your printer(s).



Attention

If your printer(s) are NOT powered ON, they will not be detected when connected to the WPS-1 device.

2. Plug the power cable into a properly grounded power outlet and into the WPS-1 port labeled **Power**.



Figure 2. WPS-1 Power Port

3. Connect the printer(s) to USB port labeled **USB-1** on the back of the WPS-1 device. If you are connecting only one (1) printer to the device, connect the printer USB cable to the port labeled **USB-1**.



Figure 3. WPS-1 USB-1 Port

WPS-1 can connect to two (2) DNP printers simultaneously. *You must connect to the USB-1 port first.* The WPS-1 device can be connected to the following DNP printers: DS40, DS80, DS620A/DS620, and RX1.



Note

Do not use the other ports on the back of the WPS-1 device as those ports are not supported.

4. When the WPS-1 device powers ON, it automatically detects the connected printer(s) and what media is loaded in those printers. Wait two minutes before you try to connect any input devices to the WPS-1 network.



Attention

When you start or restart the WPS-1 device, it takes two minutes before the device is ready for use.

5. Once the WPS-1 has started, a test print is automatically printed.
To turn off test prints, see "Changing the Test Print Setting" on page 76.

Connecting to the WPS-1 Wireless Network

The WPS-1 acts as its own wireless network for your input devices and printers.

1. From your computer or mobile device, connect to the WPS-1 Wi-Fi network.



Note

The Wi-Fi network is named **WPSxxxx**, where **xxxx** is a unique number for your device.

2. When prompted, type the following password: **DNP20153**



Note

If you are connecting to the wireless network from a Mac or PC, use the above steps to connect using the provided network name and password.

Connecting the WPS-1 to an Existing Network

You can connect the WPS-1 to an existing home or office network using an Ethernet cable. Connect the cable to the back of your WPS-1 unit and to a working network port on your router or network hub. At this time, you cannot connect the WPS-1 device wirelessly to an existing network.

Using Android Devices with WPS-1

This chapter discusses how to use your Android mobile devices to print using the WPS-1 network.

Be sure to follow the installation steps at “Setting Up the WPS-1 System” on page 13 before continuing.

There are two transfer methods you can use to print from your Android Device to the WPS-1 network - FTP or web services.

1. **Using Android Devices for Web Transfers (Mobile Apps).** Currently, web services requires the use of a WPS companion app. Use either the WPS Print 2 App or the WPS Camera app to print photos. Use the WPS Status app to monitor your media usage and system status.
2. **Using Android Devices for FTP Transfers.** FTP transfers allow you to print through the WPS-1 network using your favorite camera and photo editing applications on your mobile device. WPS-1 supports printing from Wi-Fi enabled Android and mobile devices (i.e., smartphones and tablets) using a FTP client application.

WPS-1 also allows you to connect five (5) input/transfer devices simultaneously. Your input/transfer device(s) can be a maximum of 30 feet away from WPS-1 and still send the print job successfully.

Using Android Devices for Web Transfers (Mobile Apps)

Web transfer is a transfer method used by your WPS-1 system. HTTP transfers use web technology to act as an interface between the WPS-1 network and the user. Currently, the companion apps, WPS Camera and WPS Print 2, use an HTTP interface to transfer images to the WPS-1 device for printing. While you can also use web services transfer on a PC or Mac computer, that method requires third party software development. If you want more information about third party software development, contact your DNP IAM sales representative.

Configuring Android Devices for Web Transfers (Mobile Apps)

The configuration for mobile apps is easy. Simply download the following apps from the Google Play or Amazon App store.

- ◆ WPS Status App
- ◆ WPS Camera app
- ◆ WPS Print 2 App

Printing from Android Devices using the Share Option

Use the following procedure to print from your device. By downloading the WPS Print 2 mobile application, you can print from within any photo app that uses standard share sheet functionality.

1. If you haven't already, download the **WPS Print 2 App** to your mobile device.
2. Connect to the Wi-Fi signal created by WPS-1.



Note


The signal is labeled **WPSxxxx**, where **xxxx** is a unique number for your device.

3. When prompted, type the following password: **DNP20153**

4. Launch the photo application. This application can be your standard camera roll (or photo gallery), a photo editing application, or a third party photo viewing application.

**Attention**

To use the WPS Print share feature, your photo application must use standard share sheet functionalities.

5. Select your image or images.
6. Click the **Share** option. 
7. Select the WPS Print 2 App from the listed share applications.
8. The WPS Print 2 App is launched. You can now print images using the WPS Print 2 App.

Printing from Android Devices using the WPS Print 2 App

The WPS Print 2 App allows you to print existing images from your device's photo gallery or photo album to the WPS-1 v1.1 device. However, the WPS Print v1.1 application will not work with a WPS-1 v1.0 device.

If your system automatically prints a test print when you power ON your WPS-1 device with a printer attached, you are using v1.1. If your device does not automatically print a test print, you are on a previous version of the software.


**Note**

When using this app, the images you take are saved in an album in your photo gallery or camera roll. If you have the image archiving functionality turned ON, and an SD card plugged into the WPS-1 device, your are also saved to the SD card.

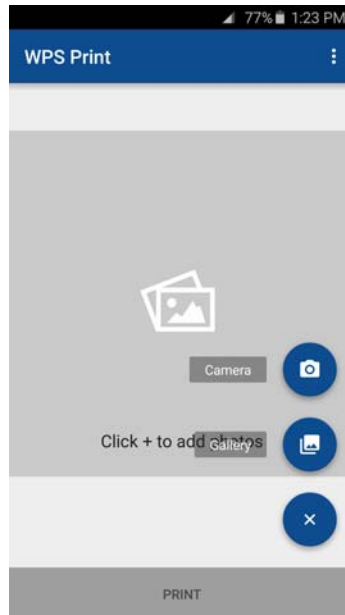
1. Connect your mobile device to the Wi-Fi signal created by WPS-1.

**Note**

The signal will be labeled **WPSxxxx**, where **xxxx** is a unique number for your device.

2. When prompted, enter the password: **DNP20153**.
3. Wait until your device shows as connected to the WPS-1 Wi-Fi network. This can take up to two minutes.
4. On your mobile device, open the **WPS Print 2 App**. 
5. The WPS Print 2 Application is now ready to use.

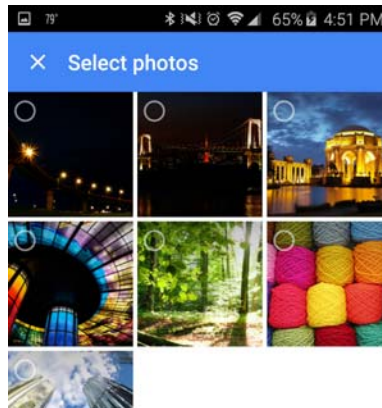
6. At the WPS Print home screen, press the blue + button to open your image options.



7. Select either the **Camera** or **Gallery** option from the menu.
8. To print images using your camera:
- ◆ Once your device's default camera application opens, take your picture.
 - ◆ When you are returned to the WPS Print 2 Application, view your image. If you are ready to print, press the **Print** button. Otherwise, you can remove the images, add images from the gallery, or take more photos before printing.
 - ◆ To continue, see step 10.



9. To print images using your photo gallery:
 - ◆ Select the photo gallery application you want to use. If you have multiple photo applications on your phone, you may have to choose a gallery each time you load images.
 - ◆ Select your image. Depending on your gallery application, you may be able to select more than one image at a time. To do this, click and hold an image until check marks appear on the images. Then select the images you want to print and press **Done** to return to the WPS Print 2 Application. Not all gallery applications allow for multiple image selection.
 - ◆ When you are returned to the WPS Print 2 Application, view your image. If you are ready to print, press the **Print** button. Otherwise, you can remove the images, add images from the gallery, or take more photos before printing.
 - ◆ To continue, see step 10.



10. At any time, you can scroll through the images you have loaded using a right/left swipe motion. The navigational dots below the image allow you to see your location in the image order.
11. When you are ready, press the **Print** button to print your loaded images.
12. On the print size and quantity selection screen, select the **Photo Size** from the drop-down list. You can select any size that is allowed by your attached printer.
13. Use the **Quantity** scroll wheel to select your print quantities.
14. Press the **Print** button to print your images. Your images are transmitted wirelessly from the WPS-1 to your DNP printer. Print times can vary depending on your image size, distance from the Wi-Fi device, and signal strengths.
15. Press the arrow (←) at the top of the screen to return to the WPS Print 2 App home screen.



Printing from Android Devices using the WPS Camera App



Attention

The WPS Camera mobile application can be used with both v1.0 and v1.1 WPS-1 devices.
The WPS Camera app is not available in all sales regions. Contact your sales representative for more information.

The WPS Camera app allows you to snap a picture with your mobile device and print the image immediately.

1. Connect to the Wi-Fi signal created by WPS-1.



Note

The signal is labeled **WPSxxxx**, where **xxxx** is a unique number for your device.

2. When prompted, type the following password: **DNP20153** Wait two minutes before opening the app.



3. Open the **WPS Camera** app.
4. At the home screen, touch the screen to launch your device's default camera app.
5. Take your picture. Your image is automatically sent to the WPS-1 device for printing.
6. After your image is sent for printing, you are returned to the home screen, where you can take and print more photos.



Note

When using this app, the images you take will not be saved in your photo gallery or camera roll. If you have the image archiving functionality turned on, and a SD card plugged into the WPS-1 device, your image is saved to the SD card.



Using the WPS Status App to Monitor Your Network



Note

When connecting to the WPS Status app for the first time, you may notice an incorrect date. The WPS Status app will reset the time from the value on your phone or tablet. This may take up to a minute to take effect.



Upon opening the WPS Status app, two icons are displayed: **Printer** and **Server**.



Printer Icon

Clicking the **Printer** icon allows you to view the following information regarding your attached printer(s):

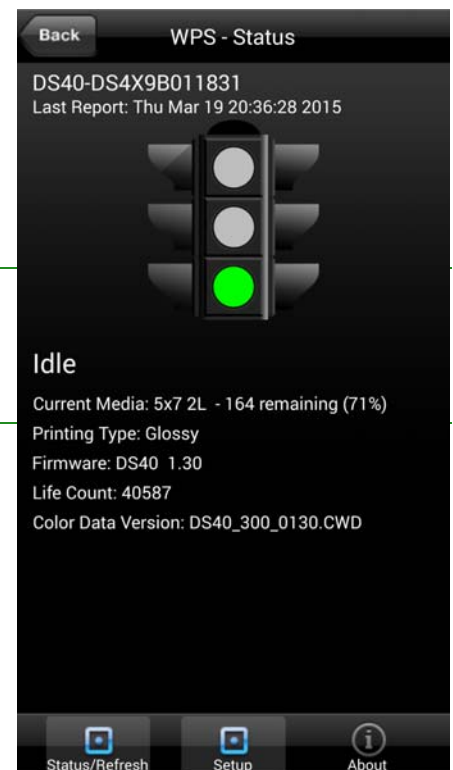
- ❖ **Status:** Shows the status of the connected printer(s):
 - ◆ **Green:** Printer is in a workable state.
 - ◆ **Yellow:** Printer is low on media.
 - ◆ **Red:** Printer is extremely low on media, has an error, or a jam.



Note

The **Yellow** and **Red** warnings can be configured using the **Setup** screen of this application. See "Setup Button" on page 21.

- ❖ **Current Media:** Displays the printer/media prints remaining, media type loaded in the connected printer(s), and remaining media amount for connected printer(s).
- ❖ **Printing Type:** Displays whether images are being printed in **Matte** or **Glossy** format.
- ❖ **Firmware:** Displays the version of printer software installed on the connected printer(s).
- ❖ **Life Count:** Displays the total prints that have been produced by the connected printer(s) in the printer(s)' lifetime.
- ❖ **Color Data Version:** Displays the ICM file version your device is using.



Server Icon

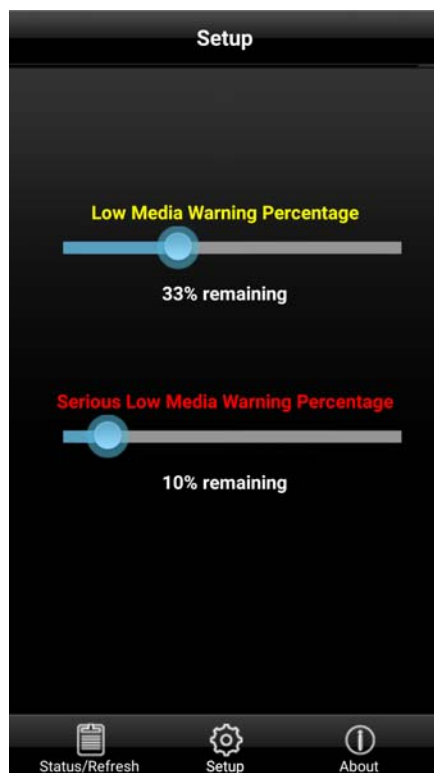
Clicking on the **Server** icon allows you to view the following information:

- ❖ **Software/Firmware Version:** Displays the installed WPS-1 firmware version. You can use this version number when you need to troubleshoot information about your system.
- ❖ **Last 5 Jobs:** Lists the name of the last 5 images printed, as well as the manner in which they were sent to the printer, i.e., FTP.
- ❖ **Submission Errors:** Displays any errors in printing your images.

Setup Button

As mentioned earlier, the **Status** screen displays whether your attached printer(s) have a high level (green light), low level (yellow light), or extremely low level (red light) of remaining media. Using the **Setup** button, you can set the threshold for when the low media warnings are displayed.

1. Click the **Setup** button.



2. Using the **Low Media Warning Percentage** slider, set the percentage at which a low media warning is triggered. If you set this at 40%, when the media left in your printer reaches 40%, the icon on the **Printer** screen will be Yellow.
3. Using the **Serious Low Media Warning Percentage** slider, set the percentage at which an extremely low media warning is triggered. If you set this at 25%, when the media left in your printer reaches 25%, the icon on the **Printer** screen will be Red.

Using Android Devices for FTP Transfers

One of the transfer methods offered by WPS-1 is FTP, or *File Transfer Protocol*. File Transfer Protocol (FTP) is a standard network protocol used to transfer files from one device to another device over a TCP-based network, such as the Internet. FTP is built on a client-server architecture and uses separate control and data connections between the client and the server. FTP transfer is best used when transferring images from a mobile device to the WPS-1 for printing. To do this, you must have a FTP client application installed on your mobile device. Be sure your FTP client application allows for binary data transfer as that is the data type WPS-1 supports.

Configuring Android for FTP Transfers

You can configure mobile FTP client applications to allow you to use this transfer method from most mobile camera and photo editing applications. You can send images to print via the FTP client using the share option.

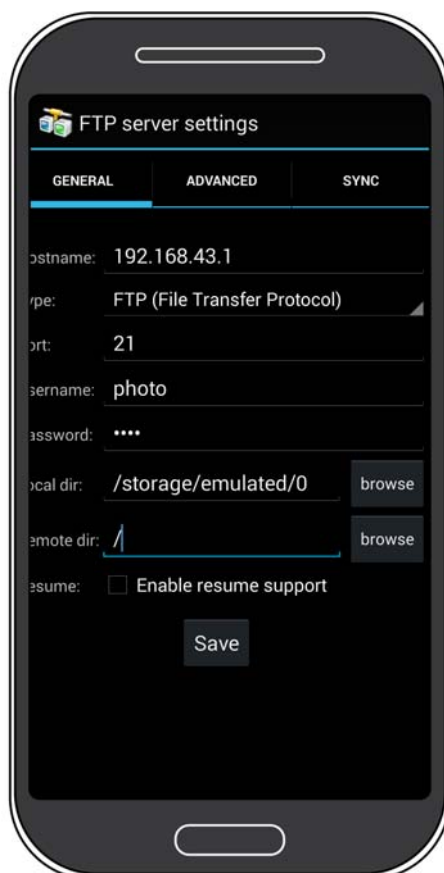
1. Download and install a FTP client application from Google Play™.



Note

Some examples of FTP client applications are: AndFTP, Auto Uploader, and Turbo Client.

2. Once installed, launch the FTP client application.



3. Enter the required information into the following fields:
 - ◆ **Host:** 192.168.43.1
 - ◆ **Type:** FTP
 - ◆ **Port:** 21
 - ◆ **Username:** photo
 - ◆ **Password:** none (type the word "none")
 - ◆ **Remote Dir:** / (forward slash)
 - ◆ **Mode:** Active (usually in advanced settings)



Attention

If you are prompted to enter a transfer option, select **Binary**.
If you select **ASCII**, your images will not print correctly.

4. Click **Save** to save your settings.
5. If you have not already, connect to the WPS-1 Wi-Fi network.
6. Return to the FTP client application, and click the **Login** button to connect to WPS-1.



Note

If the login was successful, a dialog box is displayed, confirming the connection.

7. Once you connect to WPS-1, you can now print your images wirelessly. Please note that WPS-1 only prints JPEG and PNG file formats.

Printing from Android Devices Using FTP Transfer


Use the following steps to print images from your Android phone/tablet.

1. Select your WPS-1 device from the **Settings** icon. This is located in the Wi-Fi portion of the **Settings** screen.



Note

The signal is labeled **WPSxxxx**, where **xxxx** is a unique number for your device.

2. Launch the FTP client application.
3. Launch the photo gallery application for your device. Sometimes the photo gallery is also called the "camera roll" or "photo album."
4. Select the photo you wish to print, and click the **Share** button. 
5. Select your FTP client app from the list of share options.
6. Depending on your FTP client app, you may have to confirm the FTP address and other relevant information before you can send your image.
7. Your photos are sent from your Android device to WPS-1 and are printed.

Printing Errors

If you have issues when printing images, an error sheet will print. This sheet gives you information on which image did not print so you can try to reprint the image.

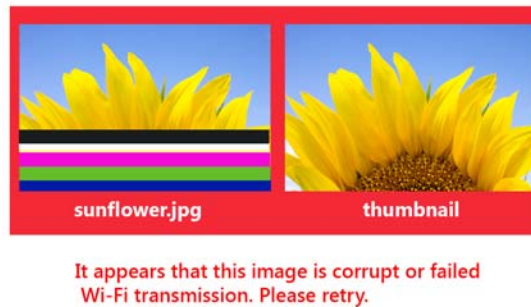


Figure 4. Example error sheet

8. If you receive this error, try to reprint the image. If the image doesn't print the second time, verify your network connections, then try again.



Note

WPS-1 has been built for JPEG and PNG files with an RGB color space. Make sure your images are in one of these formats before sending them to the WPS-1 for printing.

Print Size Chart

Use the table below to determine the size of media you need for your printer.



Note

If you use the half panel printing option, only half of your available ribbon will be used. Costs will be higher as the other half panel is not used.

Media Size	Description	Configuration Notes	DS40	DS620/DS620A	RX1	DS80/DS80DX	WPS-1 Printer Queue Name
3.5x5	3.5x5	{default}	✓*				3.5x5
4x6	two 2x6 cut strip	2 strip	✓	✓	✓		2x2x6s
	4x6	◆	✓	✓	✓		4x6
5x7	3.5x5	½ panel	✓	✓	✓*		3.5x5
	two 3.5x5 cut	2 strip	✓**	✓			3.5x5s
	5x5 square	square		✓			5x5sq
	5x7	◆	✓	✓	✓*		5x7
6x8	two 2x6 cut strip	2 strip	✓	✓	✓		2x6x2s
	4x6	½ panel	✓	✓	✓		4x6
	two 4x6 cut strip	2 strip	✓	✓	✓		2x4x6s
	four 2x6 cut strip	4 strip	✓	✓	✓		2x6x4s
	6x6 square	square		✓			6x6sq
	6x8	◆	✓	✓	✓		6x8
6x9	two 2x6 cut strip	2 strip	✓*	✓*			2x6x2s
	4x6	½ panel	✓*	✓*			4x6
	two 4x6 cut strip	2 strip	✓*	✓*			2x4x6s
	four 2x6 cut strip	4 strip	✓*	✓*			2x6x4s
6x9	6x6 square	square		✓*			6x6sq
	4.5x6	½ panel		✓*			4.5x6
	two 4.5x6 cut strip	2 strip		✓*			4.5x6s

Media Size	Description	Configuration Notes	DS40	DS620/ DS620A	RX1	DS80/ DS80DX	WPS-1 Printer Queue Name
	6x8	◆	✓*				6x8
	6x9	◆	✓*	✓			6x9
8x10	4x8	½ panel				✓	4x8
	two 4x8 cut strip	2 strip				✓	4x8x2s
	5x8	½ panel				✓	5x8
	2 5x8 cut strip	2 strip				✓	5x8x2s
	6x8	½ panel				✓	6x8
	8x8 square	square				✓	8x8sq
	8x10	◆				✓	8x10
8x12	4x8	½ panel				✓	4x8
	two 4x8 cut strip	2 strip				✓	4x8x2s
	5x8	½ panel				✓	5x8
	two 5x8 cut strip	2 strip				✓	5x8x2s
	6x8	½ panel				✓	6x8
	two 6x8 cut strip	2 strip				✓	6x8x2s
	8x8 square	square				✓	8x8sq
	8x10	◆				✓	8x10
	A4	◆				✓	A4
	8x12	◆				✓	8x12

✓ Print size is available for that printer

◆ Default setting.

* Print size may not be available in all sales regions. Contact your sales representative for more information.

** Firmware v1.5 or greater



Note

You can have two (2) printers connected to WPS-1 simultaneously. The media loaded must be the same, i.e., two printers that both have 4"6" media loaded. See "Changing the Print Pooling Settings" on page 80 for more information.

Using Apple Devices with WPS-1

This chapter discusses how to use your Apple mobile devices to print using the WPS-1 network.

Be sure to follow the installation steps at “Setting Up the WPS-1 System” on page 13 before continuing.

There are two transfer methods you can use to print from your Apple device to the WPS-1 network - web transfer or FTP transfer.

1. **Using Apple Devices for Web Transfers (Mobile Apps).** Currently, web services requires the use of a WPS companion app. Use either the WPS Print 2 App or the WPS Camera app to print photos. Use the WPS Status app to monitor your media usage and system status.
2. **Using Apple Devices for FTP Transfers.** FTP transfers allow you to print through the WPS-1 network using your favorite camera and photo editing applications on your mobile device. WPS-1 supports printing from Wi-Fi enabled iOS mobile devices (i.e., smartphones and tablets) using a FTP client application.

WPS-1 also allows you to connect five (5) input/transfer devices simultaneously. Your input/transfer device(s) can be a maximum of 30 feet away from WPS-1 and still send the print job successfully.

Using Apple Devices for Web Transfers (Mobile Apps)

Web transfer is a transfer method used by your WPS-1 system. HTTP transfers use web technology to act as an interface between the WPS-1 network and the user. Currently, the companion apps, WPS Camera and WPS Print 2, use an HTTP interface to transfer images to the WPS-1 device for printing. While you can also use web services transfer on a PC or Mac computer, that method requires third party software development. If you want more information about third party software development, contact your DNP IAM sales representative.

Configuring Apple Devices for Web Transfers (Mobile Apps)

The configuration for mobile apps is easy. Simply download the following apps from the iTunes store.

- ◆ WPS Status app
- ◆ WPS Camera app
- ◆ WPS Print 2 App

Printing from Apple Devices using the Share Sheet Option

Use the following steps to print images from your iPad/iPhone.

1. If you haven't already, download the **WPS Print 2 App** to your mobile device.
2. Connect to the Wi-Fi signal created by WPS-1.



Note

The signal is labeled **WPSxxxx**, where **xxxx** is a unique number for your device.


3. When prompted, type the following password: **DNP20153**

4. Launch the photo application. This application can be your standard camera roll (or photo gallery), a photo editing application, or a third party photo viewing application.



Attention

To use the WPS Print share feature, your photo application must use standard share sheet functionalities.

5. Select your image or images.
6. Click the **Share Sheet**. 
7. Select the WPS Print 2 App from the listed share applications.
8. The WPS Print 2 App is launched. You can now print images using the WPS Print 2 App.

Printing from Apple Devices using the WPS Print 2 App

The WPS Print 2 App allows you to print existing images from your device's photo gallery or photo album to the WPS-1 v1.1 device. However, the WPS Print v1.1 application will not work with a WPS-1 v1.0 device.

If your system automatically prints a test print when you power ON your WPS-1 device with a printer attached, you are using v1.1. If your device does not automatically print a test print, you are on a previous version of the software.



Note

When using this app, the images you take are saved in an album in your photo gallery or camera roll. If you have the image archiving functionality turned ON, and an SD card plugged into the WPS-1 device, your are also saved to the SD card.

1. Connect to the Wi-Fi signal created by WPS-1.



Note

The signal will be labeled **WPSxxxx**, where **xxxx** is a unique number for your device.

2. When prompted, type the following password: **DNP20153**
3. Wait two minutes for your device to connect to the wireless network before opening the app.



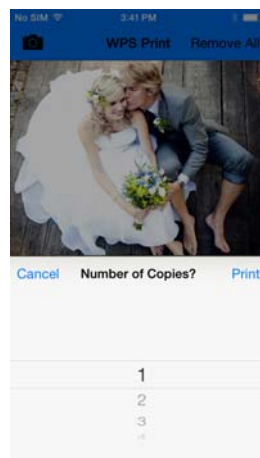
4. On your mobile device, open the **WPS Print 2 App**.

5. The WPS Print 2 App opens to the home screen.



Select Images to Print
DS40 - 4x6
Print Images

6. The WPS Print 2 Application is now ready to use.
7. From your WPS Print 2 App home screen, you can either take a picture using your device's camera, or choose images from your camera roll.
8. To print images using your camera:
- ◆ Touch the camera in the upper left corner of the app.
 - ◆ Your device's default camera application opens. Take your picture as you normally would. Press the **Use Photo** button to use that image.
 - ◆ When you are returned to the WPS Print 2 Application, view your image. If you are ready to print, press the **Print Images** button. Otherwise, you can remove the images, add images from the gallery, or take more photos before printing.
 - ◆ When prompted, select the quantity of prints you want.
 - ◆ Press the **Print** button to print your image(s).
 - ◆ To change your printer or print size, see step 10.



9. To print images using your photo gallery:
 - ◆ Press the **Select Images to Print** option at the bottom of the screen.
 - ◆ Select your image. Depending on your gallery application, you may be able to select more than one image at a time. To do this, click and hold an image until check marks appear on the images. Then select the images you want to print and press **Done** to return to the WPS Print 2 Application. Not all gallery applications allow for multiple image selection.
 - ◆ When you are returned to the WPS Print 2 Application, view your image. If you are ready to print, press the **Print Images** button. Otherwise, you can remove the images, add images from the gallery, or take more photos before printing.
 - ◆ When prompted, select the quantity of prints you want.
 - ◆ Press the **Print** button to print your image(s).
 - ◆ To change your printer or print size, see step 10.
10. At any time, you can press the **Select a Print Size** link to change your print size. If you have already selected a print size, the link shows your selected printer and print size option (for example, DS40 - 4x6).



Printing from Apple Devices using the WPS Camera App



Attention

The WPS Camera mobile application can be used with both v1.0 and v1.1 WPS-1 devices.
The WPS Camera app is not available in all sales regions. Contact your sales representative for more information.

The WPS Camera app allows you to snap a picture with your mobile device and print the image immediately.

1. Connect to the Wi-Fi signal created by WPS-1.



Note

The signal is labeled **WPSxxxx**, where **xxxx** is a unique number for your device.

2. When prompted, type the following password: **DNP20153** Wait two minutes before opening the app.



3. Open the **WPS Camera** app.

4. At the home screen, touch the screen to launch your device's default camera app.



5. Take your picture. Your image is automatically sent to the WPS-1 device for printing.
6. After your image is sent for printing, you are returned to the home screen, where you can take and print more photos.



Note

When using this app, the images you take will not be saved in your photo gallery or camera roll. If you have the image archiving functionality turned on, and a SD card plugged into the WPS-1 device, your image is saved to the SD card.

Using the WPS Status App to Monitor Your Network



Note

When connecting to the WPS Status app for the first time, you may notice an incorrect date. The WPS Status app will reset the time from the value on your phone or tablet. This may take up to a minute to take effect.



Upon opening the WPS Status app, two icons are displayed: **Printer** and **Server**.



Printer Icon

Clicking the **Printer** icon allows you to view the following information regarding your attached printer(s):

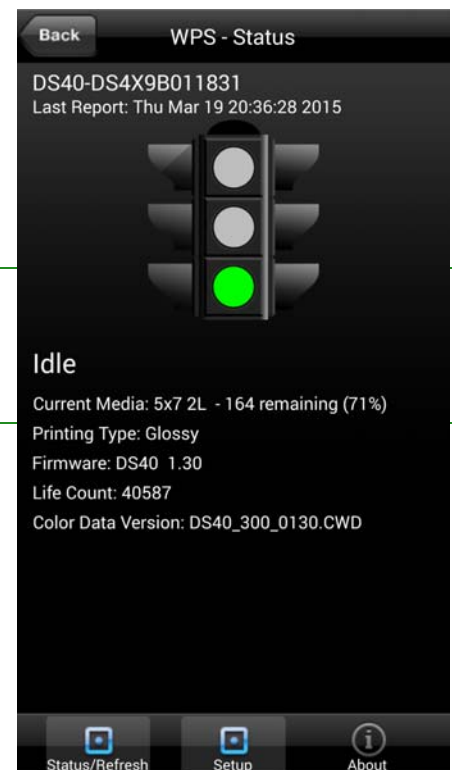
- ❖ **Status:** Shows the status of the connected printer(s):
 - ◆ **Green:** Printer is in a workable state.
 - ◆ **Yellow:** Printer is low on media.
 - ◆ **Red:** Printer is extremely low on media, has an error, or a jam.



Note

The **Yellow** and **Red** warnings can be configured using the **Setup** screen of this application. See "Setup Button" on page 33.

- ❖ **Current Media:** Displays the printer/media prints remaining, media type loaded in the connected printer(s), and remaining media amount for connected printer(s).
- ❖ **Printing Type:** Displays whether images are being printed in **Matte** or **Glossy** format.
- ❖ **Firmware:** Displays the version of printer software installed on the connected printer(s).
- ❖ **Life Count:** Displays the total prints that have been produced by the connected printer(s) in the printer(s)' lifetime.
- ❖ **Color Data Version:** Displays the ICM file version your device is using.



Server Icon

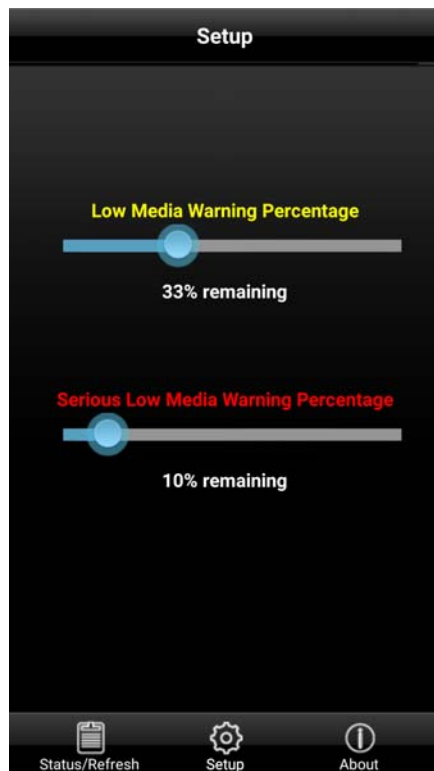
Clicking on the **Server** icon allows you to view the following information:

- ❖ **Software/Firmware Version:** Displays the installed WPS-1 firmware version. You can use this version number when you need to troubleshoot information about your system.
- ❖ **Last 5 Jobs:** Lists the name of the last 5 images printed, as well as the manner in which they were sent to the printer, i.e., FTP.
- ❖ **Submission Errors:** Displays any errors in printing your images.

Setup Button

As mentioned earlier, the **Status** screen displays whether your attached printer(s) have a high level (green light), low level (yellow light), or extremely low level (red light) of remaining media. Using the **Setup** button, you can set the threshold for when the low media warnings are displayed.

1. Click the **Setup** button.



2. Using the **Low Media Warning Percentage** slider, set the percentage at which a low media warning is triggered. If you set this at 40%, when the media left in your printer reaches 40%, the icon on the **Printer** screen will be Yellow.
3. Using the **Serious Low Media Warning Percentage** slider, set the percentage at which an extremely low media warning is triggered. If you set this at 25%, when the media left in your printer reaches 25%, the icon on the **Printer** screen will be Red.

Using Apple Devices for FTP Transfers

One of the transfer methods offered by WPS-1 is FTP, or *File Transfer Protocol*. File Transfer Protocol (FTP) is a standard network protocol used to transfer files from one device to another device over a TCP-based network, such as the Internet. FTP is built on a client-server architecture and uses separate control and data connections between the client and the server. FTP transfer is best used when transferring images from a mobile device to the WPS-1 for printing. To do this, you must have a FTP client application installed on your mobile device. Be sure your FTP client application allows for binary data transfer as that is the data type WPS-1 supports.

Configuring Apple Devices for FTP Transfers



Note

Only use this procedure when setting up your WPS-1 device for the first time. After you have configured your FTP client application to use the share sheet, you do not have to make any other changes.

1. Download a FTP client application from the Apple® App StoreSM.



Note

Some examples of FTP client applications are: Transmit™, FTP Client Pro, and Easy FTP Pro.

2. Once downloaded, launch the FTP client application.

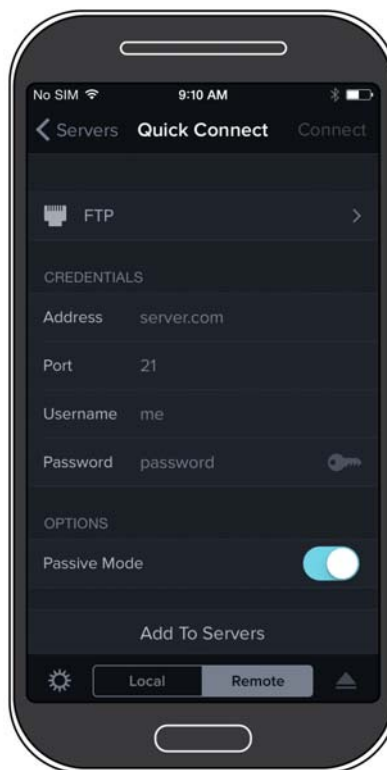


Figure 5. Example of client FTP app

3. Enter the required information into the following fields:
 - ◆ **Host:** 192.168.43.1
 - ◆ **Type:** FTP
 - ◆ **Port:** 21
 - ◆ **Username:** photo
 - ◆ **Password:** none (type the word "none")
 - ◆ **Remote Dir:** / (forward slash)
 - ◆ **Mode:** Active (usually in advanced settings)



Attention

If you are prompted to enter a transfer option, select **Binary**.
If you select **ASCII**, your images will not print correctly.

4. Click **Save** to save your settings.
5. If you have not already, connect to the WPS-1 Wi-Fi network.
6. Return to the FTP client application, and click the **Login** button to connect to WPS-1.



Note

If the login was successful, a dialog box is displayed, confirming the connection.

7. Once you connect to the WPS-1 network, you can now print your images wirelessly. Please note that WPS-1 only prints JPEG and PNG file formats.

To print your images using your iPad or iPhone, see "Printing with an iPad™/iPhone™" on page 92.

Printing from Apple Devices using FTP Transfers


Use the following steps to print images from your iPad/iPhone. If you have not already configured your device to connect to WPS-1 through a FTP client app.

1. Connect to the Wi-Fi signal created by WPS-1.



Note

The signal is labeled **WPSxxxx**, where **xxxx** is a unique number for your device.

2. When prompted, type the following password: **DNP20153**
3. Launch the photo application. This application can be your standard camera roll (or photo gallery), a photo editing application, or a third party photo viewing application.
4. Select your image or images.
5. Click the **Share Sheet**. 
6. Select the FTP client app from the listed share applications.
7. The image is printed.

Printing Errors

If you have issues when printing images, an error sheet will print. This sheet gives you information on which image did not print so you can try to reprint the image.



Figure 6. Example error sheet

1. If you receive this error, try to reprint the image. If the image doesn't print the second time, verify your network connections, then try again.



Note

WPS-1 has been built for JPEG and PNG files with an RGB color space. Make sure your images are in one of these formats before sending them to the WPS-1 for printing.

Print Size Chart

Use the table on the next pages to determine the size of media you need for your printer.



Note

If you use the half panel printing option, only half of your available ribbon will be used. Costs will be higher as the other half panel is not used.

Media Size	Description	Configuration Notes	DS40	DS620/DS620A	RX1	DS80/DS80DX	WPS-1 Printer Queue Name
3.5x5	3.5x5	{default}	✓*				3.5x5
4x6	two 2x6 cut strip	2 strip	✓	✓	✓		2x2x6s
	4x6	◆	✓	✓	✓		4x6
5x7	3.5x5	½ panel	✓	✓	✓*		3.5x5
	two 3.5x5 cut	2 strip	✓**	✓			3.5x5s
	5x5 square	square		✓			5x5sq
	5x7	◆	✓	✓	✓*		5x7
6x8	two 2x6 cut strip	2 strip	✓	✓	✓		2x6x2s
	4x6	½ panel	✓	✓	✓		4x6
	two 4x6 cut strip	2 strip	✓	✓	✓		2x4x6s
	four 2x6 cut strip	4 strip	✓	✓	✓		2x6x4s
	6x6 square	square		✓			6x6sq
	6x8	◆	✓	✓	✓		6x8
6x9	two 2x6 cut strip	2 strip	✓*	✓*			2x6x2s
	4x6	½ panel	✓*	✓*			4x6
	two 4x6 cut strip	2 strip	✓*	✓*			2x4x6s
	four 2x6 cut strip	4 strip	✓*	✓*			2x6x4s
6x9	6x6 square	square		✓*			6x6sq
	4.5x6	½ panel		✓*			4.5x6
	two 4.5x6 cut strip	2 strip		✓*			4.5x6s

Media Size	Description	Configuration Notes	DS40	DS620/ DS620A	RX1	DS80/ DS80DX	WPS-1 Printer Queue Name
	6x8	◆	✓*				6x8
	6x9	◆	✓*	✓			6x9
8x10	4x8	½ panel				✓	4x8
	two 4x8 cut strip	2 strip				✓	4x8x2s
	5x8	½ panel				✓	5x8
	2 5x8 cut strip	2 strip				✓	5x8x2s
	6x8	½ panel				✓	6x8
	8x8 square	square				✓	8x8sq
	8x10	◆				✓	8x10
8x12	4x8	½ panel				✓	4x8
	two 4x8 cut strip	2 strip				✓	4x8x2s
	5x8	½ panel				✓	5x8
	two 5x8 cut strip	2 strip				✓	5x8x2s
	6x8	½ panel				✓	6x8
	two 6x8 cut strip	2 strip				✓	6x8x2s
	8x8 square	square				✓	8x8sq
	8x10	◆				✓	8x10
	A4	◆				✓	A4
	8x12	◆				✓	8x12



Print size is available for that printer



Default setting.



Print size may not be available in all sales regions. Contact your sales representative for more information.



Firmware v1.5 or greater



Note

You can have two (2) printers connected to WPS-1 simultaneously. The media loaded must be the same, i.e., two printers that both have 4"6" media loaded. See "Changing the Print Pooling Settings" on page 80 for more information.

Using a Windows PC with the WPS-1

The easiest way to transfer images from your computer to your WPS-1 network is using the HFP transfer option. You can also set up the native print drivers for the WPS-1 device to print from your photo editing applications. Use the following sections to configure your PC computer to use WPS-1.

There are two transfer options for using WPS-1 with your Windows PC:

1. **Using Windows PC with the Hot Folder Print Options (HFP).** Using Hot Folder Printer folders, you can transfer images in bulk (or individually) by copying and pasting the images into the hot folder printers on the WPS-1 device.
2. **Using a Windows PC and Native Print Drivers.** Using the native print drivers, you can print directly from any photo application. Simply access that application's print settings, and choose the WPS-1 option as your printer.

Using Windows PC with the Hot Folder Print Options (HFP)

HFP, or *Hot Folder Printing*, is a transfer method where a hot folder (or "watched folder") is continuously monitored by the WPS-1 system. Images copied into this folder are automatically printed and then removed. Hot folders are used both for manual image imports (copying and pasting files into the hot folder) and for integration with third party software (often via FTP to the hot folder).

HFP transfers work best on PC computers, however some tablets do have HFP transfer capability. Hot folder printing allows you to load larger quantities of prints at a time to the print folder.

Configuring a Windows PC for HFP

Use the following steps to print images from your PC.

1. From your computer, select your WPS-1 device.

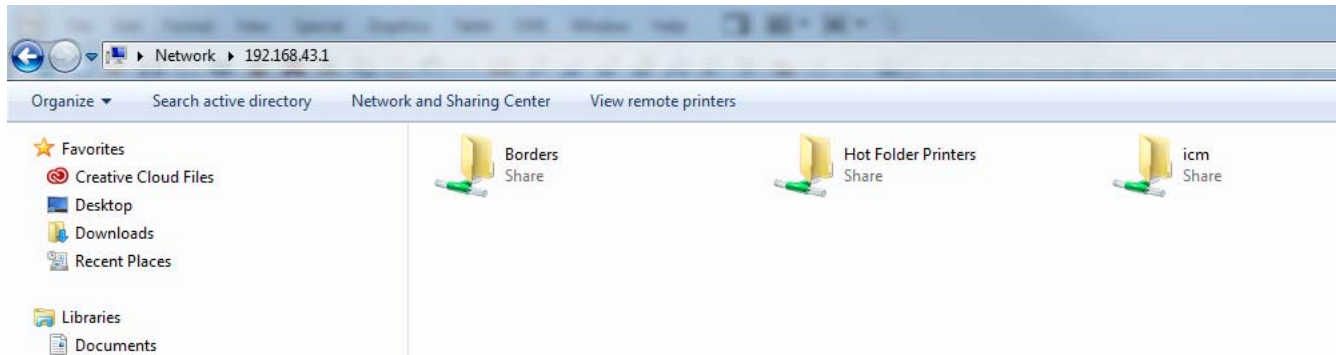


Note

The signal is labeled **WPSxxxx**, where **xxxx** is a unique number for your device.

2. When prompted, type the following password: **DNP20153**
3. Open a file explorer window. (Be sure you are not opening an internet browser.)

4. Type **\\192. 168. 43. 1** in the address bar. This accesses the WPS-1 directories.



5. Select **Hot Folder Printers** folder.
6. Select the folder for your printer model. This is labeled with the model of your DNP printer (for example, DS40.)
7. Select the print folder. This folder will be labeled with the print size loaded in your attached printer (i.e., 4"x6", 5"x7", 6"x8".)
8. You are now ready to print your images using hot folder print transfer.

Printing from a Windows PC using HFP



Note

When naming your image files, use alphanumeric characters. Do NOT use any special characters. Special characters include: @ \$ % ^ & * () + = { } Also, a space or a dash should not be the first character in the file name.

1. If you have not already, open a file explorer window and browse to your Hot Folder Printers directory. Use this address to access your device: **\\192. 168. 43. 1**
For more information, see "Configuring a Windows PC (HFP Transfer)" on page 73
2. Open a second file explorer window and browse to the images you want to print.
3. Copy the images and paste them into the print size folder in the Hot Folder Printers folder.



Note

If possible, only *copy and paste* your image. If you *cut and paste* your image when you have automatic archiving turned OFF, your images will not be saved on the WPS-1 device.

4. Your photos are sent from your PC to the WPS-1 and are printed.

Using a Windows PC and Native Print Drivers

Configuring a Windows PC using Native Print Drivers



Attention

Any custom cropping must be done before printing as WPS-1 only "center crops" to maximize print size and eliminate white spaces. Custom cropping can be accomplished via the capture and edit functions found in standard applications like Photoshop, Lightroom, iPhoto, etc.



Note

Only use the following procedures with Windows 7. Windows 8.1 and Window 10 are not supported at this time. Be sure to check the website for updates on the WIN 8.1/10 universal driver.

You can also print your images from a PC using native print drivers. This procedure includes the following actions:

- ◆ Connect to the WPS-1 Wi-Fi.
- ◆ Add the WPS-1 as a printer.
- ◆ Load the WPS-1 driver files.
- ◆ Add the print sizes.

Connecting to the Wi-Fi Network

1. Connect to the Wi-Fi signal created by WPS-1.



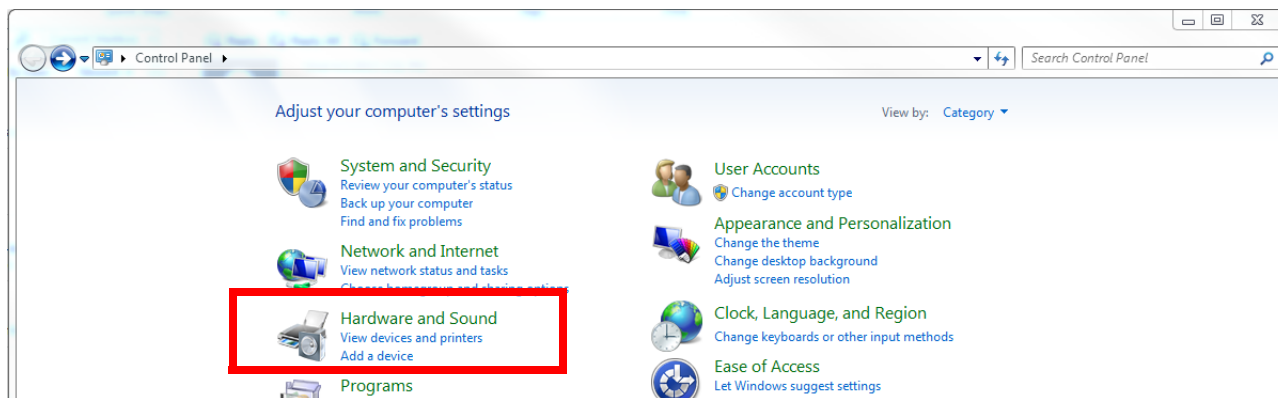
Note

The signal is labeled **WPSxxxx**, where **xxxx** is a unique number for your device.

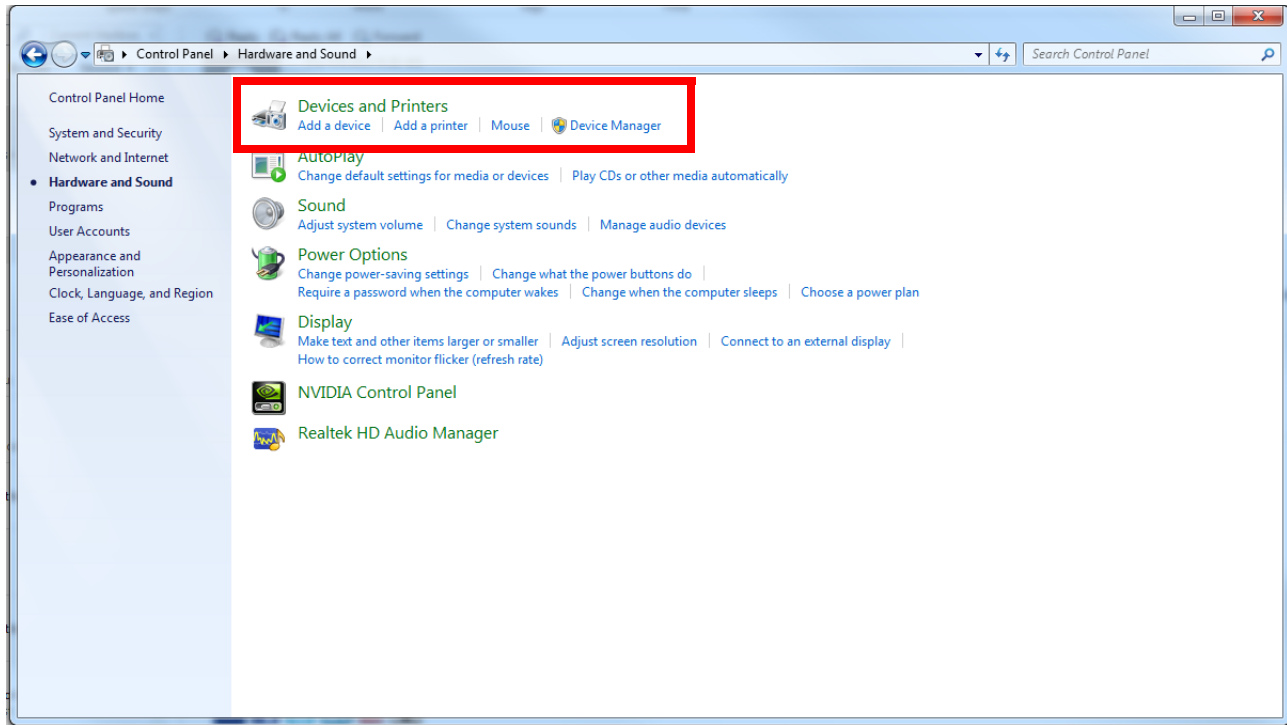
2. When prompted, type the following password: **DNP20153**

Adding the New Printer

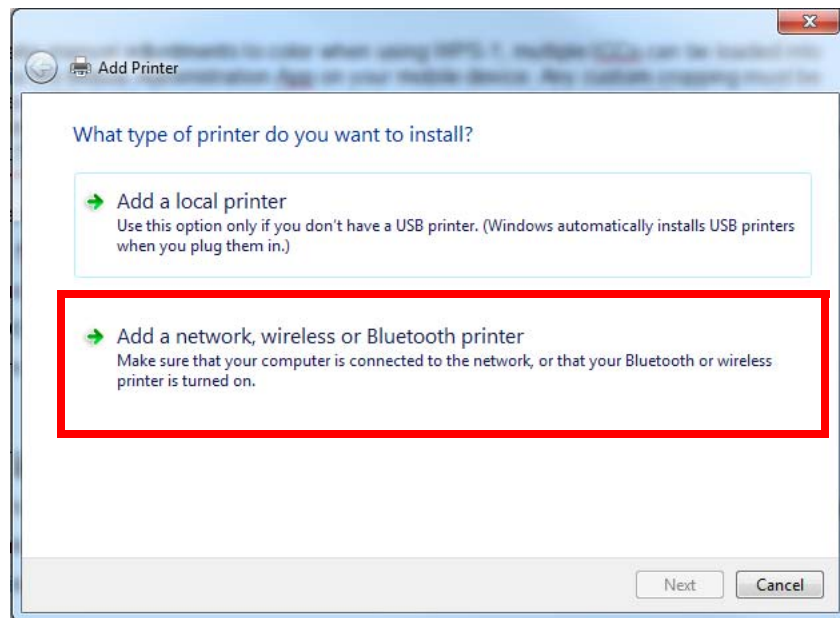
1. Navigate to your PC **Control Panel**.
2. Click on **Hardware and Sound**.



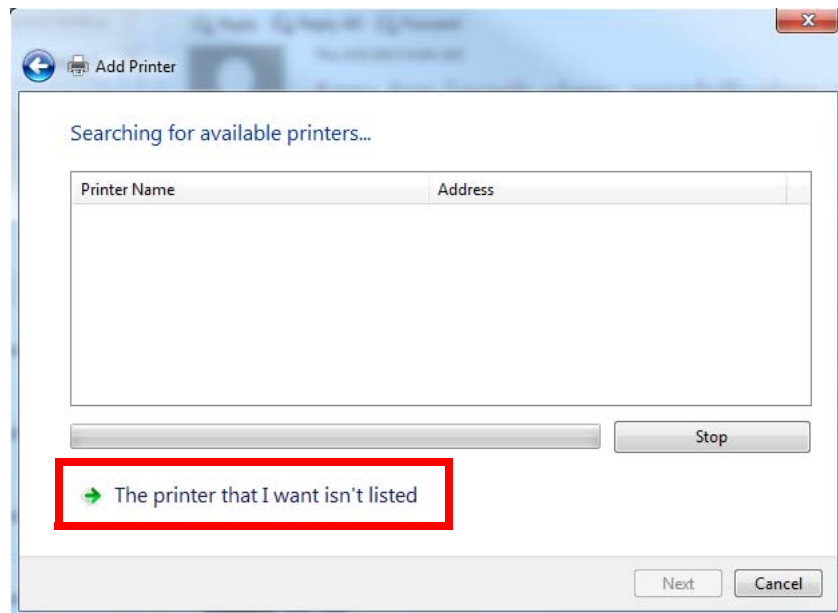
- Under the **Devices and Printers** section, click **Add a Printer**.



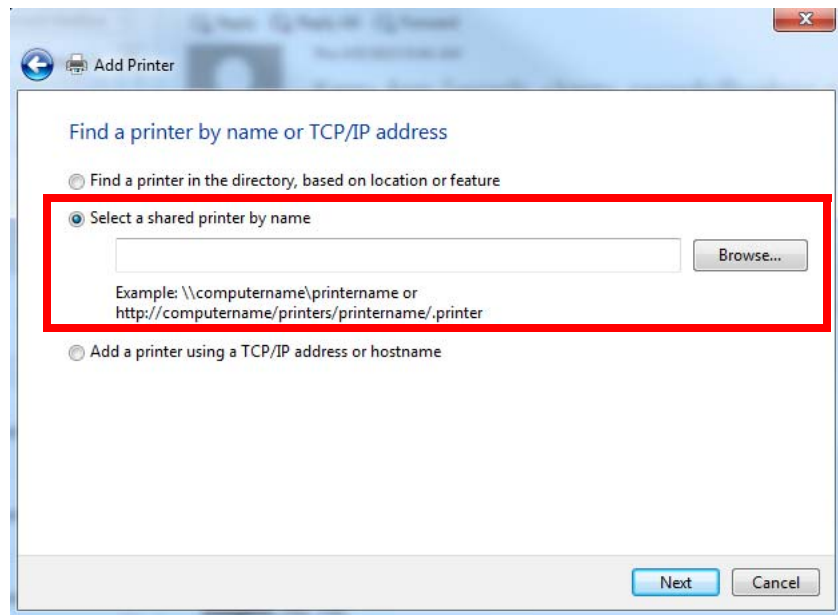
- Click **Add a network, wireless or Bluetooth printer**.



- Click **The printer that I want isn't listed**.

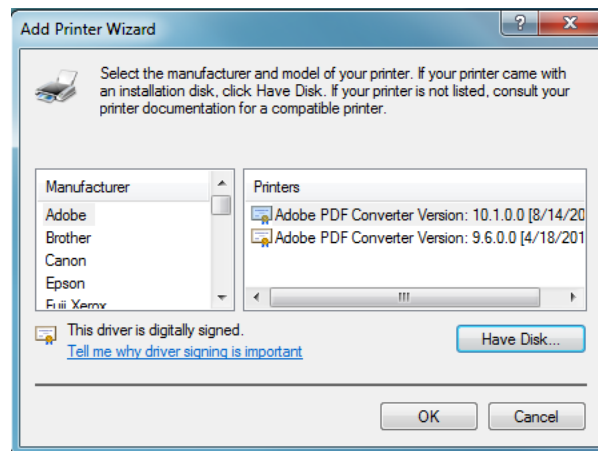


- In the **Select a shared printer by name** field, set the address of the printer to `\\192. 168. 43. 1\WPSxxx-DSxx-1-size`, where WPSxxx is the name of the printer, DSxx is the type of printer (i.e., DS40, DS80, etc.), 1 is the number of printers attached to the WPS-1 device, and size is the type of media loaded in the connected printer (i.e., 5"x7", 6"x8", etc.)



- Click **Next**.

- From the **Add Printer Wizard** dialog box, click the **Have Disk** button.

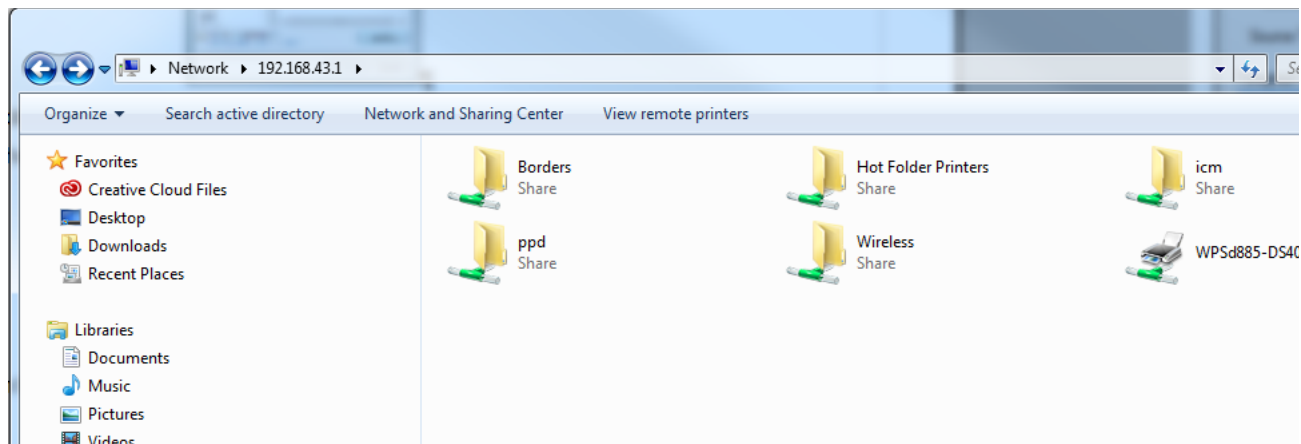


- This opens the **Install from Disk** dialog box.

Use the following procedure to add the printer drivers to your operating system. Once you have done that, you will continue with the driver installation process.

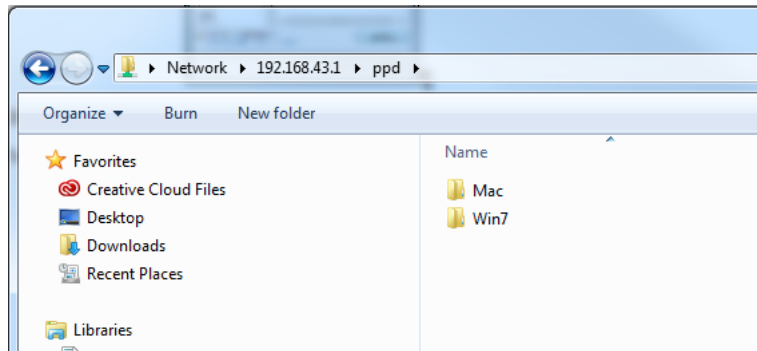
Adding the Printer Driver Files

- Open a file explorer window. (Be sure you are not opening an internet browser)
- Type **\\192. 168. 43. 1** in the address bar in the explorer window. This accesses the WPS-1 directories.

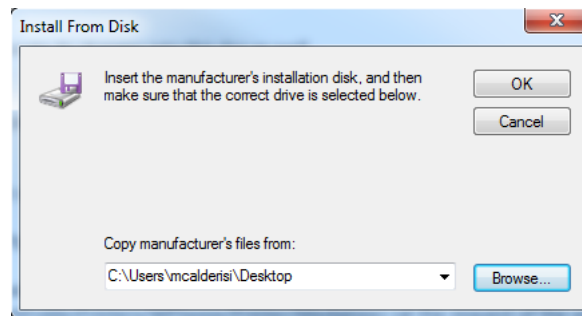


- Double-click the **PPD** folder.

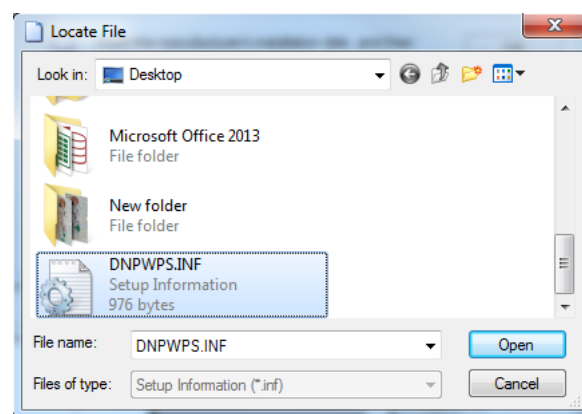
- Double-click the **Win7** folder.



- Copy all of the **Win7** files to your system desktop.
- Navigate back to the **Install From Disk** dialog box.

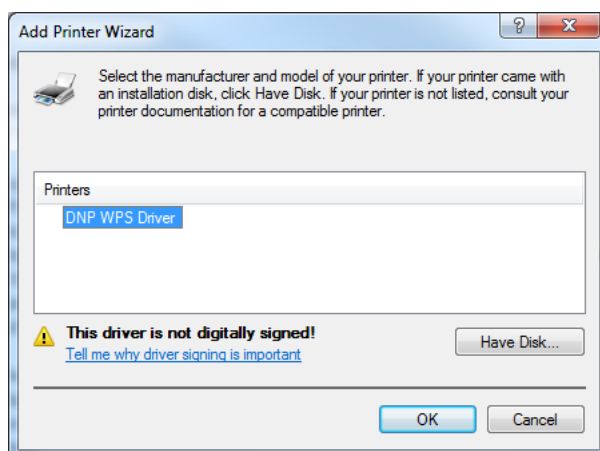


- Click the **Browse** button.
- From the **Locate File** dialog box, navigate to your Desktop and select the file named **DNPWPS.inf**.



- Click the **Open** button and then click **OK**.
You now will continue with adding the printer to your operating system.

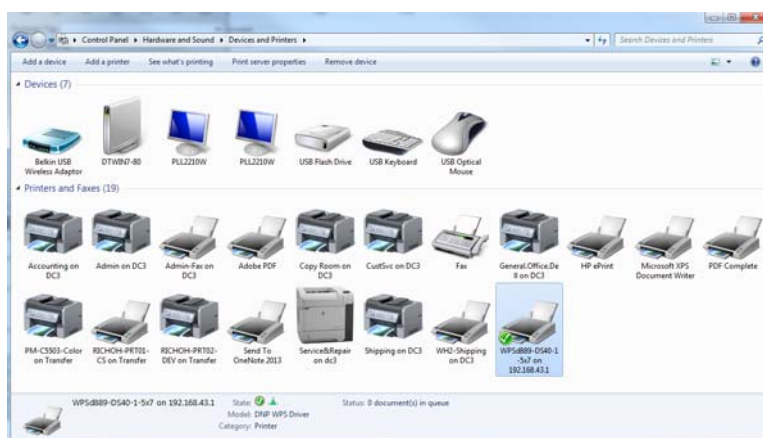
10. In the **Add Printer Wizard** dialog box, select **DNP WPS Driver** and click **OK**.



11. Click the **Next** button and then click **Finish**.

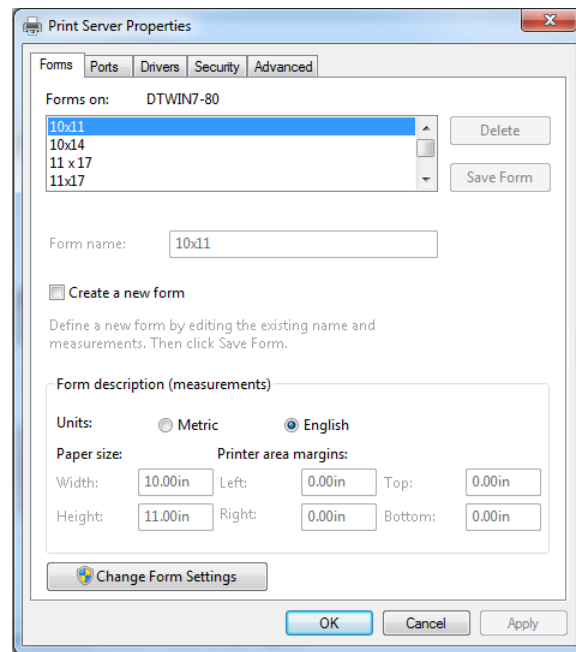
Adding New Print Sizes

1. Navigate to your PC **Control Panel** and click on **Hardware and Sound**.
2. Click on **Device and Printers**.



3. From the listed devices, select your **DNP printer**.

- Click the **Printer server properties** button at the top of the window.



- Check the **Create a New Form** checkbox.
- Enter the **Width** and **Height** (4"x6", etc.) of your print size in the respective fields.
- Click **OK** to save your changes.
- Repeat steps 3 through 7 for each print size to be added.
- You are now ready to print to your WPS-1 network from any of your usual photo editing programs.

Printing from a Windows PC using Native Print Drivers

Use the following steps to print images from your PC.



Attention

Any custom cropping must be done before printing as WPS-1 only "center crops" to maximize print size and eliminate white spaces. Custom cropping can be accomplished via the capture and edit functions found in standard applications like Photoshop, Lightroom, iPhoto, etc.

- If you have not already, configure your PC to use WPS native print drivers. See "Configuring a Windows PC using Native Print Drivers" on page 74.
- Open your image with your photo editing software. From the **File** menu, select the **Print** option.
- Make any changes you want to the printer settings using the printer settings window.
- When you are done, press the **Print** button.
- Your photos are sent from your PC to WPS-1 and are printed.

Printing Errors

If you have issues when printing images, an error sheet will print. This sheet gives you information on which image did not print so you can try to reprint the image.



Figure 7. Example error sheet

1. If you receive this error, try to reprint the image. If the image doesn't print the second time, verify your network connections, then try again.



Note

WPS-1 has been built for JPEG and PNG files with an RGB color space. Make sure your images are in one of these formats before sending them to the WPS-1 for printing.

Print Size Chart

Use the table on the next pages to determine the size of media you need for your printer.



Note

If you use the half panel printing option, only half of your available ribbon will be used. Costs will be higher as the other half panel is not used.

Media Size	Description	Configuration Notes	DS40	DS620/ DS620A	RX1	DS80/ DS80DX	WPS-1 Printer Queue Name
3.5x5	3.5x5	{default}	✓*				3.5x5
4x6	two 2x6 cut strip	2 strip	✓	✓	✓		2x2x6s
	4x6	◆	✓	✓	✓		4x6
5x7	3.5x5	½ panel	✓	✓	✓*		3.5x5
	two 3.5x5 cut	2 strip	✓**	✓			3.5x5s
	5x5 square	square		✓			5x5sq
	5x7	◆	✓	✓	✓*		5x7
6x8	two 2x6 cut strip	2 strip	✓	✓	✓		2x6x2s
	4x6	½ panel	✓	✓	✓		4x6
	two 4x6 cut strip	2 strip	✓	✓	✓		2x4x6s
	four 2x6 cut strip	4 strip	✓	✓	✓		2x6x4s
	6x6 square	square		✓			6x6sq
	6x8	◆	✓	✓	✓		6x8
6x9	two 2x6 cut strip	2 strip	✓*	✓*			2x6x2s
	4x6	½ panel	✓*	✓*			4x6
	two 4x6 cut strip	2 strip	✓*	✓*			2x4x6s
	four 2x6 cut strip	4 strip	✓*	✓*			2x6x4s
6x9	6x6 square	square		✓*			6x6sq
	4.5x6	½ panel		✓*			4.5x6
	two 4.5x6 cut strip	2 strip		✓*			4.5x6s

Media Size	Description	Configuration Notes	DS40	DS620/ DS620A	RX1	DS80/ DS80DX	WPS-1 Printer Queue Name
	6x8	◆	✓*				6x8
	6x9	◆	✓*	✓			6x9
8x10	4x8	½ panel				✓	4x8
	two 4x8 cut strip	2 strip				✓	4x8x2s
	5x8	½ panel				✓	5x8
	2 5x8 cut strip	2 strip				✓	5x8x2s
	6x8	½ panel				✓	6x8
	8x8 square	square				✓	8x8sq
	8x10	◆				✓	8x10
8x12	4x8	½ panel				✓	4x8
	two 4x8 cut strip	2 strip				✓	4x8x2s
	5x8	½ panel				✓	5x8
	two 5x8 cut strip	2 strip				✓	5x8x2s
	6x8	½ panel				✓	6x8
	two 6x8 cut strip	2 strip				✓	6x8x2s
	8x8 square	square				✓	8x8sq
	8x10	◆				✓	8x10
	A4	◆				✓	A4
	8x12	◆				✓	8x12



Print size is available for that printer



Default setting.



Print size may not be available in all sales regions. Contact your sales representative for more information.



Firmware v1.5 or greater



Note

You can have two (2) printers connected to WPS-1 simultaneously. The media loaded must be the same, i.e., two printers that both have 4"6" media loaded. See "Changing the Print Pooling Settings" on page 80 for more information.

Using a Mac with the WPS-1

This chapter discusses how to use your Mac computer to print using the WPS-1 network.

Be sure to follow the installation steps at “Setting Up the WPS-1 System” on page 13 before continuing.

There are two transfer options for using WPS-1 with your Mac:

1. **Using a Mac for Hot Folder Printing (HFP).** Using Hot Folder Printer folders, you can transfer images in bulk (or individually) by copying and pasting the images into the hot folder printers on the WPS-1 device.
2. **Using a Mac and Native Print Drivers.** Using the native print drivers, you can print directly from any photo application. Simply access that application’s print settings, and choose the WPS-1 option as your printer.



Note

WPS-1 also allows you to connect five (5) input/transfer devices simultaneously. Your input/transfer device(s) can be a maximum of 30 feet away from WPS-1 and still send the print job successfully.

Using a Mac for Hot Folder Printing (HFP)

HFP, or *Hot Folder Printing*, is a transfer method where a hot folder (or “watched folder”) is continuously monitored by the WPS-1 system. Images copied into this folder are automatically printed and then removed. Hot folders are used both for manual image imports (copying and pasting files into the hot folder) and for integration with third party software (often via FTP to the hot folder).

HFP transfers work best on Mac computers, however some tablets do have HFP transfer capability. Hot folder printing allows you to load larger quantities of prints at a time to the print folder.

Configuring a Mac for HFP Printing

1. From the Desktop, select **Go**.
2. Select **Connect to Server**.
3. In the **Server Address** field, type the address: **smb: //192. 168. 43. 1**

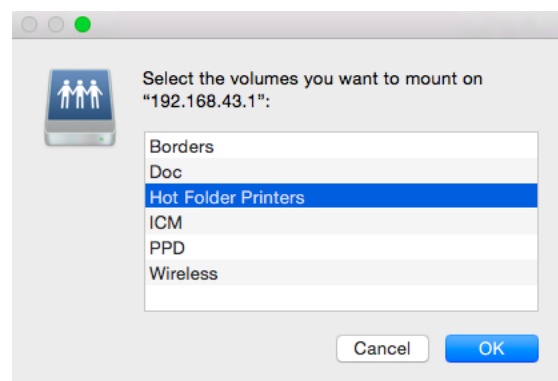


4. Click **Connect**.

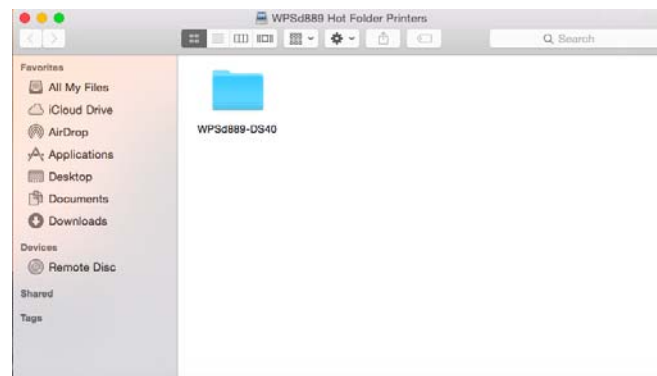
5. Select the **Connect as: Guest** radio button and click **Connect**.



6. From the **Volumes To Mount** list, select the **Hot Folder Printers** option and click **OK**.



7. When the Finder window is displayed, make note of the WPS-1 device name.



Printing from a Mac (HFP Transfer)



Attention

Any custom cropping must be done before printing as WPS-1 only "center crops" to maximize print size and eliminate white spaces. Custom cropping can be accomplished via the capture and edit functions found in standard applications like Photoshop, Lightroom, iPhoto, etc.

1. If you have not already, configure your Mac to use WPS hot folder printing. See "Configuring a Mac (HFP Transfer)" on page 81.
2. Open the Hot Folder Printers folder you created.
3. Open a second finder window and browse to the images you want to print.
4. Copy the images and paste them into the print size folder in the Hot Folder Printers folder.



Note

If possible, only *copy and paste* your image. If you *cut and paste* your image when you have automatic archiving turned OFF, your images will not be saved on the WPS-1 device.

5. Your photos are sent from your Mac to WPS-1 and are printed.

Using a Mac and Native Print Drivers

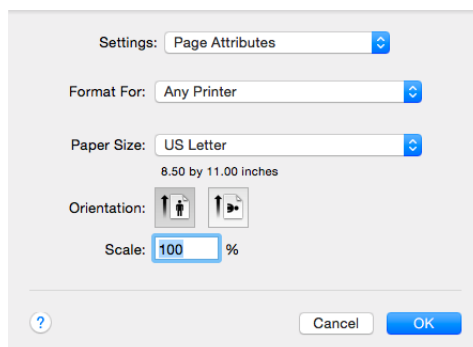
Configuring a Mac using WPS-1 Native Print Drivers

To install the native print drivers, you must do the following:

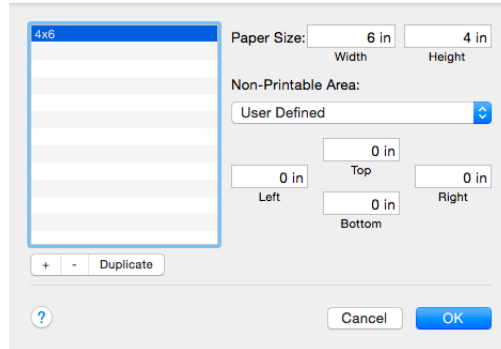
- ◆ Create custom paper sizes.
- ◆ Connect to the Wi-Fi network and mount the WPS-1 Drives.
- ◆ Add a new printer and driver files.
- ◆ Add the ICM files.

Creating a Custom Paper Size

1. Open a text editing program, such as Word or TextEdit.
2. Select **File** and then **Page Setup**.



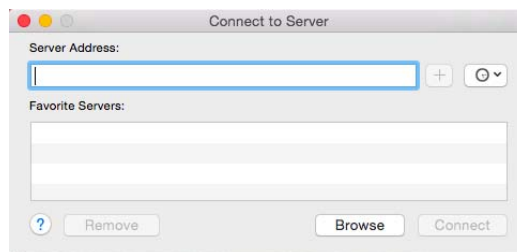
- From the **Paper Size** drop-down menu, select **Manage Custom Sizes**.



- Click the **+** button in the lower left corner of the window.
- In the **Paper Size: Width** and **Paper Size: Height** fields, enter the dimensions of the paper size you wish to print (i.e., 4"x6", 5"x7", 6"x8", etc.)
- Double-click the name of your newly added paper size in the list, and rename it to the paper size you are creating (i.e., 4"x6", 5"x7", etc.)
- Set the **Top**, **Right**, **Bottom**, and **Left** margins to **0**.
- Click **OK** to save the new paper size.
- Repeat these steps for each paper size to be added.

Connecting to the WPS-1 Wi-Fi Network

- From the Desktop, select **Go**.
- Select **Connect to Server**.
- In the **Server Address** field, type the address: **smb: //192. 168. 43. 1**

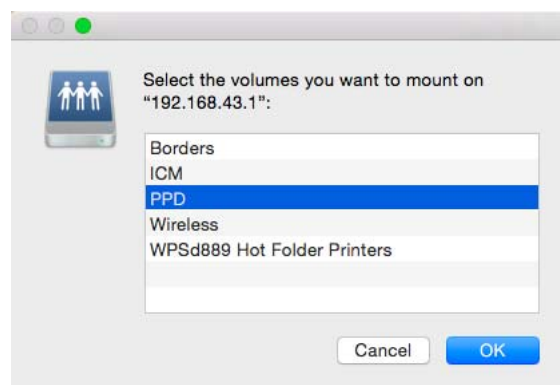


- Click **Connect**.

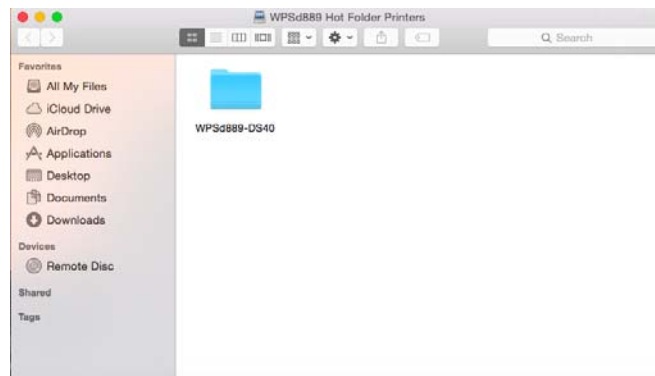
5. Select the **Connect as: Guest** radio button and click **Connect**.



6. From the **Volumes To Mount** list, select the **PPD** option and click **OK**.



7. When the Finder window is displayed, make note of the WPS-1 device name.

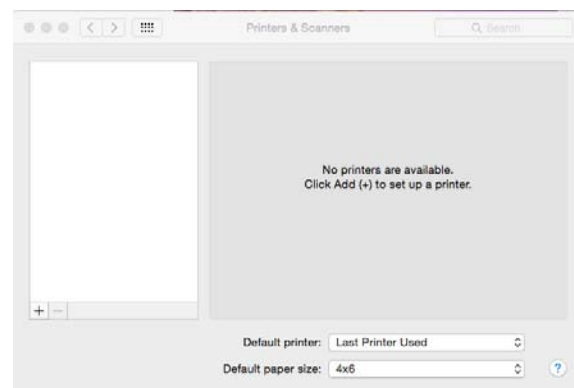


Adding the New Printer

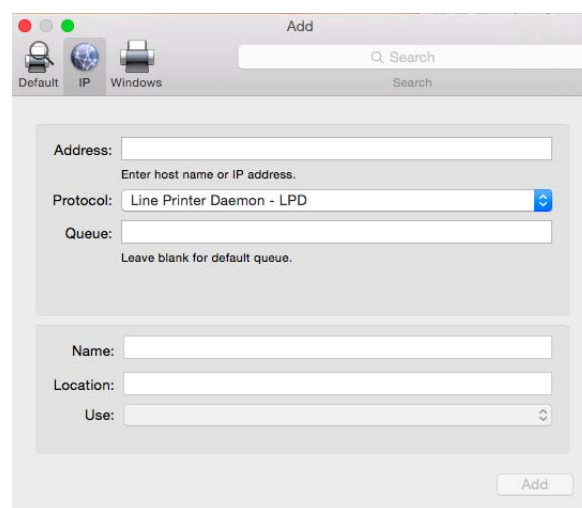
1. Click the Apple logo  in the upper left hand corner of your desktop, and select **System Preferences**.



2. Click on **Printers & Scanners**.



3. Under the **Printers** section on the left side of the screen, click **+** (**plus button**) to add a printer.
4. Click the **IP** button on the top left corner of the **Add** screen.



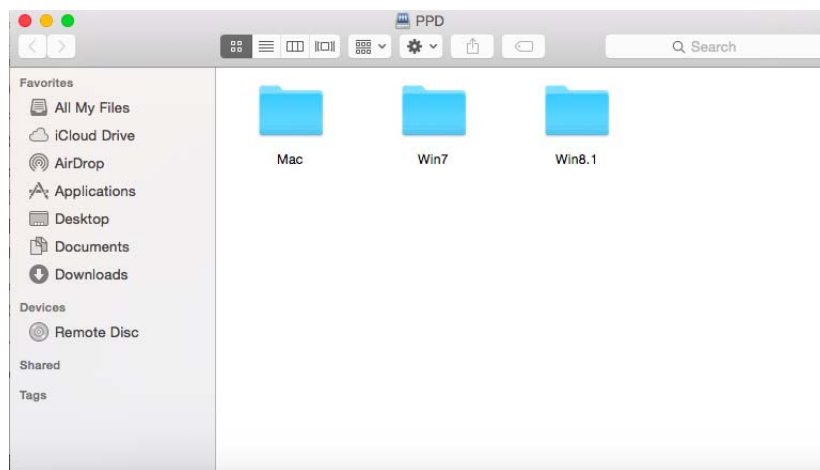
5. In the **Address** field, type the WPS-1 IP address: **192. 168. 43. 1**
6. From the **Protocol** drop-down menu, select **Internet Printing Protocol - IPP**.
7. In the **Queue** field, type **printers/<devicename>-#-<printsize>**, where *<devicename>* is the name listed under the WPS Hot Folder Printers, # is the printer number (either 1 or 2 depending on how many printers are connected), and *<printsize>* is the size of the media loaded in connected printers. For example, if you are connecting one DS40 printer with 4"x6" media, your queue would read: printers/wpsd889-ds40-1-4x6
8. In the **Name** field, type the name of your printer.



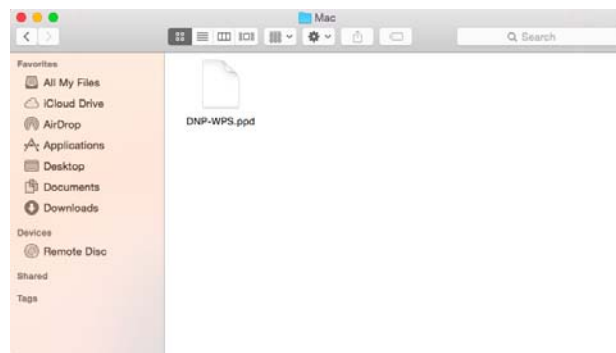
Note

If you have more than one (1) printer attached to your Mac, you should give the printer attached to the WPS-1 device a name that designates the printer as being attached to WPS-1.

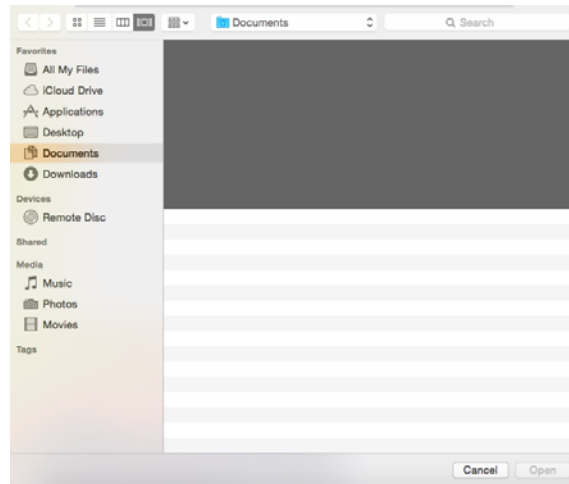
9. In the **Use** field, select **Other**. A dialog opens where you can select your printer driver files.
10. Browse to the PPD volume you mounted previously and select the **Mac** folder.



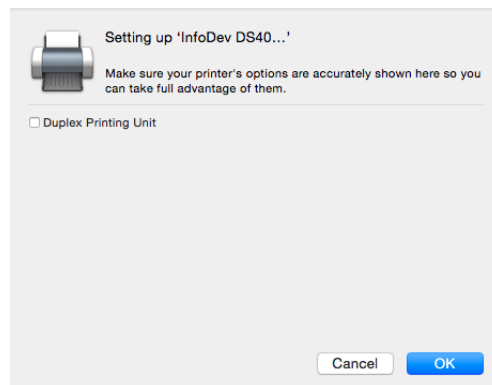
11. Select the PPD file for the WPS-1 device.



12. Click and drag the file into the default directory in your printer driver window.



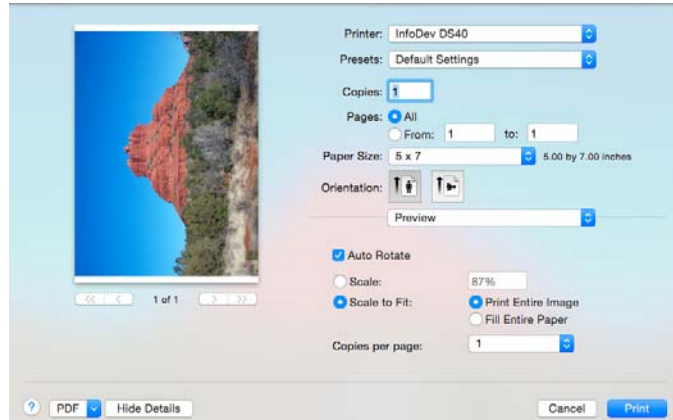
13. Highlight the PPD file and click the **Open** button.
14. The **Use** field now reads **WPS**. Click the **Add** button.
15. If you receive a verification message, click the **Continue** button.
16. When the **Setting Up** message appears, verify that the **Duplex Printing Unit** check box is NOT checked.



17. Click **OK**.

Printing from a Mac using Native Print Drivers

1. Open your image with your photo editing software.
2. From the **File** menu, select the **Print** option.



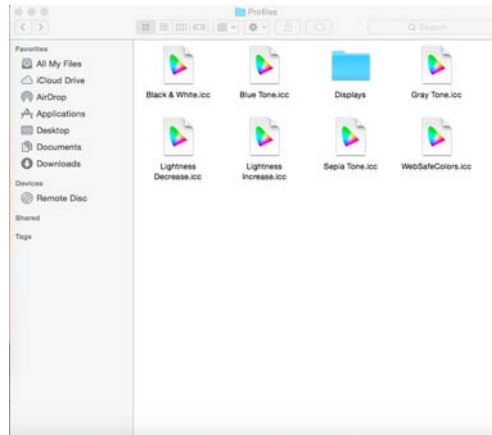
3. When the **Print Preview** window is displayed, verify that you are printing to the WPS-1 device.
4. From the **Paper Size Option** drop-down menu, select your desired print size.
5. Change the image **Orientation** if needed.
6. Select the **Scale to Fit** radio button.
7. Select the **Fill Entire Paper** radio button.
8. To apply the color profile, select **Color Matching** from the drop-down menu.
9. Select the **ColorSync** radio button.
10. From the **Profile** drop-down menu, select the appropriate profile for your printer.
11. Click the **Print** button.

Adding ICM Files

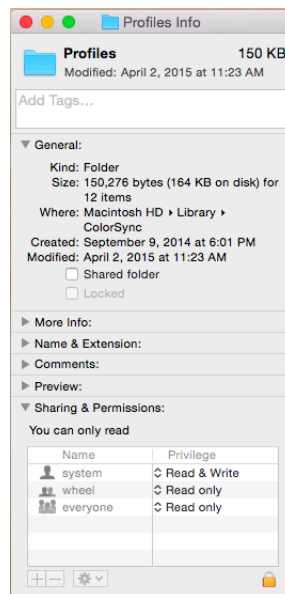
On Macs running OS 10.7 and up, the folder where the ICM files are located may be locked by default. To add ICM files, you must first unlock this folder before you can install printer profiles. To unlock this folder and then install the ICM files:

1. Select **Go**.
2. Select **Computer**.
3. Select your Mac and then select the **Library** folder.
4. Select the **ColorSync** folder.
5. Select the **Profiles** folder.

6. From the menu bar, select **File** and then **Get Info**.

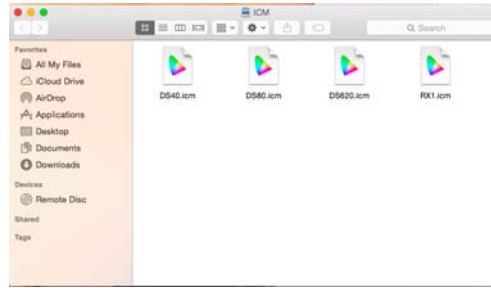


7. Click the **Lock** icon at the bottom right corner of the window and enter the Admin password.



8. Change the folder's access state to **Read and Write**.
9. You are now ready to install the printer profiles.
10. Select **Go**.
11. Select **Connect to Server**.
12. In the **Server Address** field, type smb://192.168.43.1.
13. Click **Connect**.
14. Select the **Connect as: Guest** radio button and click **Connect**.

15. From the **Volumes To Mount** list, select the **ICM** option and click **OK**.



16. Select each icm file for your connected printer(s) (i.e., DS40.icm, DS80.icm, etc.) and drag the file(s) over to the **Profiles** folder.
17. You are now ready to print to your WPS-1 network from any of your usual photo editing programs.

Printing Errors

If you have issues when printing images, an error sheet will print. This sheet gives you information on which image did not print so you can try to reprint the image.

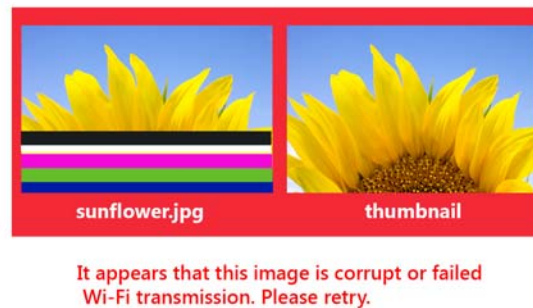


Figure 8. Example error sheet

1. If you receive this error, try to reprint the image. If the image doesn't print the second time, verify your network connections, then try again.



Note

WPS-1 has been built for JPEG and PNG files with an RGB color space. Make sure your images are in one of these formats before sending them to the WPS-1 for printing.

Print Size Chart

Use the table on the next pages to determine the size of media you need for your printer.



Note

If you use the half panel printing option, only half of your available ribbon will be used. Costs will be higher as the other half panel is not used.

Media Size	Description	Configuration Notes	DS40	DS620/ DS620A	RX1	DS80/ DS80DX	WPS-1 Printer Queue Name
3.5x5	3.5x5	{default}	✓*				3.5x5
4x6	two 2x6 cut strip	2 strip	✓	✓	✓		2x2x6s
	4x6	◆	✓	✓	✓		4x6
5x7	3.5x5	½ panel	✓	✓	✓*		3.5x5
	two 3.5x5 cut	2 strip	✓**	✓			3.5x5s
	5x5 square	square		✓			5x5sq
	5x7	◆	✓	✓	✓*		5x7
6x8	two 2x6 cut strip	2 strip	✓	✓	✓		2x6x2s
	4x6	½ panel	✓	✓	✓		4x6
	two 4x6 cut strip	2 strip	✓	✓	✓		2x4x6s
	four 2x6 cut strip	4 strip	✓	✓	✓		2x6x4s
	6x6 square	square		✓			6x6sq
	6x8	◆	✓	✓	✓		6x8
6x9	two 2x6 cut strip	2 strip	✓*	✓*			2x6x2s
	4x6	½ panel	✓*	✓*			4x6
	two 4x6 cut strip	2 strip	✓*	✓*			2x4x6s
	four 2x6 cut strip	4 strip	✓*	✓*			2x6x4s
6x9	6x6 square	square		✓*			6x6sq
	4.5x6	½ panel		✓*			4.5x6
	two 4.5x6 cut strip	2 strip		✓*			4.5x6s

Media Size	Description	Configuration Notes	DS40	DS620/ DS620A	RX1	DS80/ DS80DX	WPS-1 Printer Queue Name
	6x8	◆	✓*				6x8
	6x9	◆	✓*	✓			6x9
8x10	4x8	½ panel				✓	4x8
	two 4x8 cut strip	2 strip				✓	4x8x2s
	5x8	½ panel				✓	5x8
	2 5x8 cut strip	2 strip				✓	5x8x2s
	6x8	½ panel				✓	6x8
	8x8 square	square				✓	8x8sq
	8x10	◆				✓	8x10
8x12	4x8	½ panel				✓	4x8
	two 4x8 cut strip	2 strip				✓	4x8x2s
	5x8	½ panel				✓	5x8
	two 5x8 cut strip	2 strip				✓	5x8x2s
	6x8	½ panel				✓	6x8
	two 6x8 cut strip	2 strip				✓	6x8x2s
	8x8 square	square				✓	8x8sq
	8x10	◆				✓	8x10
	A4	◆				✓	A4
	8x12	◆				✓	8x12



Print size is available for that printer



Default setting.



Print size may not be available in all sales regions. Contact your sales representative for more information.



Firmware v1.5 or greater



Note

You can have two (2) printers connected to WPS-1 simultaneously. The media loaded must be the same, i.e., two printers that both have 4"6" media loaded. See "Changing the Print Pooling Settings" on page 80 for more information.



Using a Digital Camera with the WPS-1

This chapter discusses how to use your digital camera to print using the WPS-1 network.

Be sure to follow the installation steps at “Setting Up the WPS-1 System” on page 13 before continuing.

WPS-1 enhances your digital camera capture-to-print work flows. There are two ways to print to your DNP printers using your digital cameras and your WPS-1 device:

1. **“Using Digital Cameras for Wi-Fi Transfers” on page 65.** If your digital camera is Wi-Fi enabled, or you have a Wi-Fi adapter for your camera, you can send images to your mobile device, and then print from the mobile device to the WPS network. (Recommended solution.)
2. **“Using Digital Cameras for FTP Transfers” on page 66.** If you have a digital camera that has an option for FTP transfer, you can also use this option with the WPS-1 network. While some cameras do allow direct FTP transfers, you can also use a third party product.



Note

WPS-1 also allows you to connect five (5) input/transfer devices simultaneously. Your input/transfer device(s) can be a maximum of 30 feet away from WPS-1 and still send the print job successfully.

Using Digital Cameras for Wi-Fi Transfers

If your digital camera is Wi-Fi enabled, you can set your camera to transfer your images to your preferred mobile device or computer. Once you’ve set up your digital camera to transfer images via Wi-Fi, it’s easy to transfer images and then print them from your mobile device or computer. How you transfer your images to your mobile device depends on your digital camera. Some cameras come with built-in Wi-Fi connectivity, while others require a Wi-Fi adapter or accessory. Consult your camera documentation to see if your camera is Wi-Fi compatible.

Printing from Digital Cameras Using a Mobile Device

Once you’ve set up your digital camera to transfer images to your mobile device, it’s easy to send images to your device for printing. Once you’ve transferred the images, use the same steps as “Printing from Android Devices using the WPS Print 2 App” on page 16 or “Printing from Apple Devices using the WPS Print 2 App” on page 28 to print your images. How you transfer your images to your mobile device depends on your digital camera. Some cameras come with built-in Wi-Fi connectivity, while others require a Wi-Fi adapter or accessory. Consult your camera documentation to see if your camera is Wi-Fi compatible.

You can now begin printing your images. When WPS-1 powers ON, it will auto-detect the connected printer(s) and the media loaded. A test image is automatically printed. It will also set up the appropriate folder (hot folder) from which images will be printed. As noted earlier, WPS-1 can be connected to two (2) printers simultaneously. Normal transfer time for prints is 25 seconds but varies based on signal strength, and connection speeds.

**Note**

When naming your image files, use alphanumeric characters. Do NOT use any special characters. Special characters include: @ \$ % ^ & * () + = { } Also, a space or a dash should not be the first character in the file name.

Using Digital Cameras for FTP Transfers

To transfer images from your digital camera using FTP, you must have a camera that supports configurable file transfers via FTP or uses a dedicated Android operating system.

Configuring Digital Cameras for FTP Transfers

3. Download a FTP client application from Google Play.
4. Once downloaded, launch the FTP client application.
5. Enter the required information into the following fields:
 - ◆ **Host:** 192.168.43.1
 - ◆ **Type:** FTP
 - ◆ **Port:** 21
 - ◆ **Username:** photo
 - ◆ **Password:** none (type the word "none")
 - ◆ **Remote Dir:** / (forward slash)
 - ◆ **Mode:** Active (usually in advanced settings)

**Attention**

If you are prompted to enter a transfer option, select **Binary**.
If you select **ASCII**, your images will not print correctly.

6. Click **Save** to save your settings.
7. If you have not already, connect to the WPS-1 Wi-Fi network.
8. Return to the FTP client application, and click the **Login** button to connect to WPS-1.

**Note**

If the login was successful, a dialog box is displayed, confirming the connection.

9. Once connected to WPS-1, you can now begin to print your images wirelessly. Please note that WPS-1 will only print JPEG and PNG file formats.

Printing from Digital Cameras Using FTP

While only a handful of cameras currently offer a FTP transfer option, those work flows are usually compatible with the WPS-1 network. Consult your camera documentation to find out more about your camera's specific FTP options. If your camera does support FTP transfer, follow the instructions in "Using Android Devices for FTP Transfers" on page 22 or "Using Apple Devices for FTP Transfers" on page 34 to connect your camera to the WPS-1 network and print directly from your digital camera.

Print Size Chart

Use the table on the next pages to determine the size of media you need for your printer.



Note

If you use the half panel printing option, only half of your available ribbon will be used. Costs will be higher as the other half panel is not used.

Media Size	Description	Configuration Notes	DS40	DS620/ DS620A	RX1	DS80/ DS80DX	WPS-1 Printer Queue Name
3.5x5	3.5x5	{default}	✓*				3.5x5
4x6	two 2x6 cut strip	2 strip	✓	✓	✓		2x2x6s
	4x6	◆	✓	✓	✓		4x6
5x7	3.5x5	½ panel	✓	✓	✓*		3.5x5
	two 3.5x5 cut	2 strip	✓**	✓			3.5x5s
	5x5 square	square		✓			5x5sq
	5x7	◆	✓	✓	✓*		5x7
6x8	two 2x6 cut strip	2 strip	✓	✓	✓		2x6x2s
	4x6	½ panel	✓	✓	✓		4x6
	two 4x6 cut strip	2 strip	✓	✓	✓		2x4x6s
	four 2x6 cut strip	4 strip	✓	✓	✓		2x6x4s
	6x6 square	square		✓			6x6sq
	6x8	◆	✓	✓	✓		6x8
6x9	two 2x6 cut strip	2 strip	✓*	✓*			2x6x2s
	4x6	½ panel	✓*	✓*			4x6
	two 4x6 cut strip	2 strip	✓*	✓*			2x4x6s
	four 2x6 cut strip	4 strip	✓*	✓*			2x6x4s
6x9	6x6 square	square		✓*			6x6sq
	4.5x6	½ panel		✓*			4.5x6
	two 4.5x6 cut strip	2 strip		✓*			4.5x6s

Media Size	Description	Configuration Notes	DS40	DS620/ DS620A	RX1	DS80/ DS80DX	WPS-1 Printer Queue Name
	6x8	◆	✓*				6x8
	6x9	◆	✓*	✓			6x9
8x10	4x8	½ panel				✓	4x8
	two 4x8 cut strip	2 strip				✓	4x8x2s
	5x8	½ panel				✓	5x8
	2 5x8 cut strip	2 strip				✓	5x8x2s
	6x8	½ panel				✓	6x8
	8x8 square	square				✓	8x8sq
	8x10	◆				✓	8x10
8x12	4x8	½ panel				✓	4x8
	two 4x8 cut strip	2 strip				✓	4x8x2s
	5x8	½ panel				✓	5x8
	two 5x8 cut strip	2 strip				✓	5x8x2s
	6x8	½ panel				✓	6x8
	two 6x8 cut strip	2 strip				✓	6x8x2s
	8x8 square	square				✓	8x8sq
	8x10	◆				✓	8x10
	A4	◆				✓	A4
	8x12	◆				✓	8x12



Print size is available for that printer



Default setting.



Print size may not be available in all sales regions. Contact your sales representative for more information.



Firmware v1.5 or greater



Note

You can have two (2) printers connected to WPS-1 simultaneously. The media loaded must be the same, i.e., two printers that both have 4"6" media loaded. See "Changing the Print Pooling Settings" on page 80 for more information.

Custom Borders

Custom borders provide the ability to create branded prints with custom logos and event information. The borders are automatically applied to any print of the specified print size when the images are printed via the WPS-1 system and you have enabled borders. You can design a border using any photo application software package that allows for the creation of layers within the file. A few examples are Photoshop, GIMP, and Corel Paintshop Pro. You must create a border for each orientation - both horizontal and vertical.

Custom Border Requirements

Each border file must contain a space with a transparent background where the image will appear. Newly created borders must meet the following criteria:

- ❖ **File Format:** PNG only.
- ❖ **Orientation:** Both horizontal and vertical borders must be loaded for each new border. If you only load one orientation, then only that border will appear on prints.
- ❖ **File Naming:** **border-o.png** where **border** is a fixed term, and **o** is the border orientation, i.e., **border-v.png** for a border that has a vertical orientation.
- ❖ **Size:** Must be the full size in inches for each print size. For example, a 4x6 border would be 4"x6" (vertical) and 6"x4" (horizontal). You can also use the following pixel sizes:
 - ◆ **4x6:** 1200x1800 pixels
 - ◆ **5x7:** 1500x2100 pixels
 - ◆ **6x8:** 1800x2400 pixels
- ❖ **Resolution:** 300 dpi
- ❖ **Color Mode:** RGB only
- ❖ **Background/Image Space:** Must have a transparent background, or image space. The area where the image will appear cannot be colored in.
- ❖ **Image Compression:** No compression allowed. (No LZW, etc.)

In general, the opening in the border should be the same aspect ratio as the overall image, although the opening does not have to be strictly rectangular, and it may have varied edge treatments. Having elements of the border overlap the image space is acceptable, however keep in mind this may block important portions of your images.

Creating Custom Borders

1. On your computer, create a folder for your border files. Name the border folder with a dynamic name that you will recognize later.
2. Use your preferred photo editing software to create your new border.
3. Use the above requirements to create two borders that have the correct file size, file format, color mode, background transparency, and resolution. One for horizontal prints and one for vertical prints.
4. Save your borders with the proper file name (either **border-v.png** or **border-h.png**) in the border folder you just created. Remember, each print size must have a horizontal and vertical border.

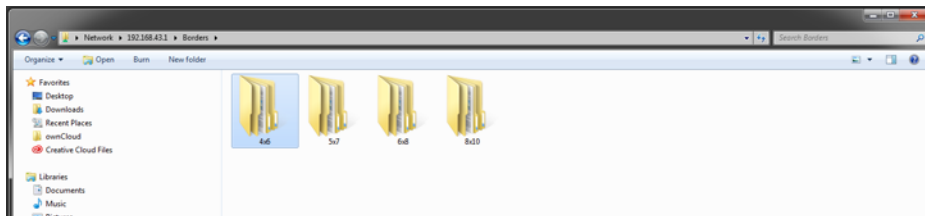
Adding the Custom Borders to the WPS-1



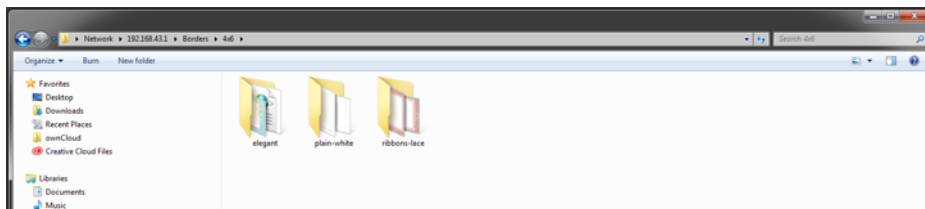
Attention

You must complete this procedure from a PC or Mac computer that is wirelessly connected to your WPS-1 device.

1. Connect to the WPS-1 Wi-Fi network.
2. Open a file explorer window. (Be sure you are not opening an internet browser.)
3. Type \\192.168.43.1 in the address bar. This accesses the WPS-1 directories.
4. Open the **Borders** directory.
5. Browse to the print size for the borders you created.



6. Copy the border folder you created earlier (with both border files in it), and paste that folder in the print size folder.



Note

Within each border folder, a configuration file (XML file) is automatically created by the WPS-1 system. There is no need to create a new XML file for new border folders.

Enabling Borders

1. Connect to the WPS-1 Wi-Fi network.
2. Open an internet browser window and enter this web address:
http://192.168.43.1/configurationsen.html
The WPS-1 configuration web page is displayed in English by default.
3. If you are accessing the configuration web page and you have changed the default language, use the following formula to determine what web address to use:
http://192.168.43.1/configurations[XX].html where [XX] is the two letter language code for your default language. Common language codes are:
 - ◆ EN – English
 - ◆ FR – French

- ◆ DE – German
 - ◆ ES – Spanish
 - ◆ PT – Portuguese
 - ◆ IT – Italian
 - ◆ RU – Russian
 - ◆ PL – Polish
 - ◆ CS – Czech
4. Under the correct file transfer section (either **FTP** or **HFP** depending on your file transfer preferences), locate the **Enable Borders** option.

F T P

Attribute	Existing Value	Modified Value
Enable FTP	On	On ▼
Enable Borders	On	On ▼
FTP Copies	1	1 ▼
FTP Queue	WPSd885-DS40-1-6x8	WPSd885-DS40-1-6x8 ▼
Border Selected	ribbons-lace	ribbons-lace ▼

Figure 9. FTP options - you can also enable borders in the HFP section

5. Change the drop-down to **ON**.
6. Locate the **Border Selected** option.

F T P

Attribute	Existing Value	Modified Value
Enable FTP	On	On ▼
Enable Borders	On	On ▼
FTP Copies	1	1 ▼
FTP Queue	WPSd885-DS40-1-6x8	WPSd885-DS40-1-6x8 ▼
Border Selected	ribbons-lace	ribbons-lace ▼

7. Change the drop-down option to the border you want to print. Choose the border folder name you created in "Creating Custom Borders" on page 69.
8. At the bottom of the page, click the **Save** button.

9. A blue progress wheel appears as your changes are saved. When the "Changes made..." message appears, press the **OK** button.



10. Wait at least one minute and then reboot your WPS-1 device.
11. After three minutes, reconnect to the WPS-1 Wi-Fi network. (If you have initial test prints turned ON, reconnect once your test image prints.)
12. Refresh the Configuration page to confirm the change has been made.
13. The border you have selected is printed on your images.

Troubleshooting Borders

If you are having issues after installing and enabling borders, use this section to troubleshoot those issues.

Borders are only enabled for one print size.

If you want borders enabled for all print sizes, you must have border files installed on your WPS-1 device for all print sizes.

Example: You are using your WPS-1 system with a DS620A printer and you have 6x8 ribbon and paper installed. You have included border files in your 4x6 print size folder, and you have enabled borders using the configuration web page. If you make 6x8 prints, no borders will appear. You must create and install border files in your 6x8 print size folder as well.

I can't enable different borders for different print sizes.

At this time, you can only enable borders with the same folder name for all print sizes. You can create any border you want and as long as you use the same folder name, and then you can enable that border across any print size.

Example: You want a "thank you" border for 4x6 prints, and a "congratulations" border for 6x8 prints. Create the sets of borders, and use the same folder name - "wedding 2015" - for both sets of borders. After you have enabled borders using the configuration web page, any 4x6 you print will have the thank you border and any 6x8 you print will have the congratulations border.

My border isn't printing.

Check for the following common issues if your border isn't printing:

- ◆ Have you enabled borders using the configuration web page? If so, did you reboot your WPS-1 device to make sure the changes were saved?
- ◆ Is your border file named correctly?
- ◆ Did you use the correct border file parameters when creating the file?
- ◆ Are your borders saved inside a border folder for the print size you need?
- ◆ If borders are only printing for one orientation, make sure you have installed both borders on your device and that both files were created properly.

If you are still having issues, contact technical support for assistance.

Advanced Actions

About This Chapter

This chapter covers advanced topics and procedures relating to your WPS-1 device. Please read through all instructions carefully and thoroughly before proceeding. Changing the settings covered in this chapter can cause your WPS-1 device to not function in the manner in which you intended. Your WPS-1 device ships with recommended settings from the factory. Only make the changes covered in this chapter if you are trying to customize a setting for your specific needs.

All changes must be made exactly as stated in the following procedures. Changes that are not made in accordance with these procedures can void your warranty and cause damage to your WPS-1 device. If you have questions about procedures in this chapter, please contact Technical Support or your sales representative.

Using the Configuration Web Page

You can configure your WPS settings from a web page using a standard Internet browser. When using your WPS system with a PC or Mac, it is helpful to change settings using the configuration web page.



Note

When changing any configuration settings, be sure to follow the procedures carefully, including the timing and reboot instructions.

DNP WIRELESS PRINT SERVER

Home Legal Configuration

General

Attribute	Existing Value	Modified Value
Archive	On	On ▾
Init Test Print	On	On ▾
Language	EN	IT ▾
Region	EU	

Printing

Attribute	Existing Value	Modified Value
Enable 4x6 size (2 2x6 cut) strip printing	On	On ▾
Enable 6x8 size (4 2x6 cut) strip printing	On	On ▾
Enable half size panel printing	On	On ▾
Enable square size printing	On	On ▾
Matte	Off	Off ▾
Printer Pooling	On	On ▾

FTP

Attribute	Existing Value	Modified Value
Enable FTP	On	On ▾
Enable Borders	On	On ▾
FTP Copies	1	1 ▾
FTP Queue	WPSd885-DS40-1-6x8	WPSd885-DS40-1-6x8 ▾
Border Selected	ribbons-lace	ribbons-lace ▾

HFP (Hot Folder)

Attribute	Existing Value	Modified Value
Enable HFP	On	On ▾
Enable Borders	On	On ▾
HFP Copies	1	1 ▾
Border Selected	elegant	elegant ▾

Networking

Attribute	Existing Value	Modified Value
File Lock Wait Time	20	20 ▾
Mini XML API	Off	Off ▾
Enable SLP	Off	Off ▾
Enable WebPut	On	On ▾

Save

Accessing the Configuration Web Page

1. Connect to the WPS-1 Wi-Fi network.
2. Open an internet browser window and enter this web address:
http://192.168.43.1/configuration.html
3. If you are accessing the configuration web page again and you have changed the default language, use the following formula to determine what web address to use:
http://192.168.43.1/configuration[XX].html where [XX] is the two letter language code for your default language. Common language codes are:
 - ◆ EN – English
 - ◆ FR – French
 - ◆ DE – German
 - ◆ ES – Spanish
 - ◆ PT – Portuguese
 - ◆ IT – Italian
 - ◆ RU – Russian
 - ◆ PL – Polish
 - ◆ CS – Czech



Note

Language options vary per sales region. See your sales representative for more information.

4. The WPS-1 configuration web page is displayed in English by default.
5. Use the following procedures to change any settings for your WPS-1 system.

Changing the General Configuration Settings

Use the general configuration settings to change your archive settings, default language, and initial test print settings.

Configuring Image Archiving

You can archive your images to a SD card once you have printed them. WPS-1 is set to archive your images by default.



Note

If you turn OFF the archiving functionality, your images are deleted from the WPS-1 device once they have been printed.

1. If you have not already, connect to the WPS-1 Wi-Fi network and open your configuration web page.

- Under the **General** section of the configuration web page, locate the **Archive** option.

G e n e r a l

Attribute	Existing Value	Modified Value
Archive	On	On ▼
Init Test Print	On	On ▼
Language	EN	IT ▼
Region	EU	

- Change the drop-down option to either **OFF** or **ON**.
- At the bottom of the page, click the **Save** button.
- A blue progress wheel appears as your changes are saved. When the "Changes made..." message appears, press the **OK** button.



- Wait at least one minute and then reboot your WPS-1 device.
- After three minutes, reconnect to the WPS-1 Wi-Fi network. (If you have initial test prints turned ON, reconnect once your test image prints.)
- Refresh the Configuration page to confirm the change has been made.

Archiving Images

- Make sure your Archive setting is set to ON. See "Configuring Image Archiving" on page 74 for more information.
- Insert an SD card in the slot on the side of the WPS-1 device.
- Once you print your image, your image is saved to the directory on your SD card.



Note

Your SD card must have a directory called **DNParchive** for your images to be saved. If you do not have an SD card inserted into the slot, your images will not be saved.

Changing the Test Print Setting

When the WPS-1 starts, a test image is automatically printed. Use this procedure to enable or disable that setting.

1. Under the **General** section of the configuration web page, locate the **Init Test Print** option.

G e n e r a l

Attribute	Existing Value	Modified Value
Archive	On	On ▼
Init Test Print	On	On ▼
Language	EN	IT ▼
Region	EU	

2. Change the drop-down option.
3. At the bottom of the page, click the **Save** button.
4. A blue progress wheel appears as your changes are saved. When the "Changes made..." message appears, press the **OK** button.



5. Wait at least one minute and then reboot your WPS-1 device.
6. After three minutes, reconnect to the WPS-1 Wi-Fi network. (If you have initial test prints turned ON, reconnect once your test image prints.)
7. Refresh the Configuration page to confirm the change has been made.

Changing the Default Language

Use this procedure to change the default language for your WPS-1 device. This changes the language shown on the configuration web page.

- Under the **General** section of the configuration web page, locate the **Language** option.

G e n e r a l

Attribute	Existing Value	Modified Value
Archive	On	On ▼
Init Test Print	On	On ▼
Language	EN	IT ▼
Region	EU	

- Change the drop-down option to the language you want.

- ◆ EN – English
- ◆ FR – French
- ◆ DE – German
- ◆ ES – Spanish
- ◆ PT – Portuguese
- ◆ IT – Italian
- ◆ RU – Russian
- ◆ PL – Polish
- ◆ CS – Czech



Note

Not all languages are available in every sales region where the WPS-1 devices are sold. Only the languages that are available in your sales region are displayed on the configuration web page. For more information, please contact your sales representative.

- At the bottom of the page, click the **Save** button.
- A blue progress wheel appears as your changes are saved. When the "*Changes made...*" message appears, press the **OK** button.



- Wait at least one minute and then reboot your WPS-1 device.
- After three minutes, reconnect to the WPS-1 Wi-Fi network. (If you have initial test prints turned ON, reconnect once your test image prints.)

7. Refresh the Configuration page to confirm the change has been made.

About the WPS-1 Region Setting

The region setting displays the region where your WPS-1 device is intended to be used. The sales region cannot be changed.

Changing the Printing Settings

Use the printing settings to change your print finish type, printer pooling settings, and other printing size options.

Changing the Printing Size Options

There are a few printing options that can be enabled or disabled that deal with the final print size or how the print is printed on the ribbon panel. Those options are:

- ❖ **4x6 Strip Printing** – Allows 4x6 prints to be cut into two 2x6 strips.
- ❖ **6x8 Strip Printing** – Allows 6x8 prints to be cut into four 2x6 strips.
- ❖ **Half Size Panel Printing** – Only prints on half of a ribbon panel. The next order will start on a new ribbon panel.
- ❖ **Square Size Printing** – Allows printing of square images such as 4x4.

Refer to the printer chart on page 89 for more information on whether the above printing size options are available with your media type. To change the settings, use the procedure below. Make only one printing size change at a time. If you need to make more than one printing size change, repeat the procedure.

1. Under the **Printing** section of the configuration web page, locate the **printing size** option you want to update.

Printing

Attribute	Existing Value	Modified Value
Enable 4x6 size (2 2x6 cut) strip printing	On	On ▼
Enable 6x8 size (4 2x6 cut) strip printing	On	On ▼
Enable half size panel printing	On	On ▼
Enable square size printing	On	On ▼
Matte	Off	Off ▼
Printer Pooling	On	On ▼

2. Change the drop-down option to **ON** or **OFF**.



Note

If you want to have 2" prints as your default print size, be sure to change the print queue setting under your transfer type. See either "Configuring FTP Settings" on page 81 or "Configuring HFP Settings" on page 87 for details on changing your print queue.

3. At the bottom of the page, click the **Save** button.

4. A blue progress wheel appears as your changes are saved. When the "Changes made..." message appears, press the **OK** button.



5. Wait at least one minute and then reboot your WPS-1 device.
6. After three minutes, reconnect to the WPS-1 Wi-Fi network. (If you have initial test prints turned ON, reconnect once your test image prints.)
7. Refresh the Configuration page to confirm the change has been made.

Changing the Print Finish

You can print your images with either a *matte* or *glossy print* finish. WPS-1 is set to **Glossy** by default. If you wish to print your images with a matte finish:

1. From the configuration web page, locate the **Printing** section.
2. Find the **Matte** option and change the drop-down to **ON** or **OFF**.

Printing

Attribute	Existing Value	Modified Value
Enable 4x6 size (2 2x6 cut) strip printing	On	On ▼
Enable 6x8 size (4 2x6 cut) strip printing	On	On ▼
Enable half size panel printing	On	On ▼
Enable square size printing	On	On ▼
Matte	Off	Off ▼
Printer Pooling	On	On ▼

3. At the bottom of the page, click the **Save** button.

- 4. A blue progress wheel appears as your changes are saved. When the "Changes made..." message appears, press the **OK** button.



- 5. Wait at least one minute and then reboot your WPS-1 device.
- 6. After three minutes, reconnect to the WPS-1 Wi-Fi network. (If you have initial test prints turned ON, reconnect once your test image prints.)
- 7. Refresh the Configuration page to confirm the change has been made.

Changing the Print Pooling Settings

If you have two printers with the printer media loaded (i.e., 4"x6"), you can print to both printers simultaneously. This creates a balanced load between the two printers and allows for even media consumption. You must have two printers that are the same model, loaded with the same media for this feature to work. This feature is enabled by default.

- 1. Under the **Printing** section of the configuration web page, locate the **Printer Pooling** option.

Printing

Attribute	Existing Value	Modified Value
Enable 4x6 size (2 2x6 cut) strip printing	On	On ▼
Enable 6x8 size (4 2x6 cut) strip printing	On	On ▼
Enable half size panel printing	On	On ▼
Enable square size printing	On	On ▼
Matte	Off	Off ▼
Printer Pooling	On	On ▼

- 2. Change the drop-down option to **OFF** to disable the setting (enabled by default).
- 3. At the bottom of the page, click the **Save** button.

4. A blue progress wheel appears as your changes are saved. When the "Changes made..." message appears, press the **OK** button.



5. Wait at least one minute and then reboot your WPS-1 device.
6. After three minutes, reconnect to the WPS-1 Wi-Fi network. (If you have initial test prints turned ON, reconnect once your test image prints.)
7. Refresh the Configuration page to confirm the change has been made.

Configuring FTP Settings

One of the transfer methods offered by WPS-1 is FTP, or *File Transfer Protocol*. File Transfer Protocol (FTP) is a standard network protocol used to transfer files from one device to another device over a TCP-based network, such as the Internet. FTP is built on a client-server architecture and uses separate control and data connections between the client and the server. FTP transfer is best used when transferring images from a mobile device to the WPS-1 for printing. To do this, you must have a FTP client application installed on your mobile device. Be sure your FTP client application allows for binary data transfer as that is the data type WPS-1 supports. Use this section to set up your FTP setting for your WPS-1 network.

Configuring FTP

Enables or disables the FTP transfer option. Only enable FTP if you are planning on using that transfer option. If you disable the FTP transfer option, be sure to enable the HFP transfer option.

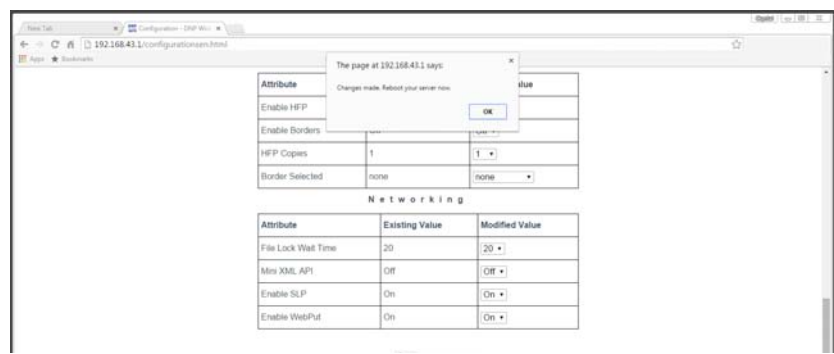
1. Under the **FTP** section of the configuration web page, locate the **Enable FTP** option.

FTP

Attribute	Existing Value	Modified Value
Enable FTP	On	On ▼
Enable Borders	On	On ▼
FTP Copies	1	1 ▼
FTP Queue	WPSd885-DS40-1-6x8	WPSd885-DS40-1-6x8 ▼
Border Selected	ribbons-lace	ribbons-lace ▼

2. Change the drop-down option to **ON** or **OFF**.
3. At the bottom of the page, click the **Save** button.

4. A blue progress wheel appears as your changes are saved. When the “Changes made...” message appears, press the **OK** button.



5. Wait at least one minute and then reboot your WPS-1 device.
6. After three minutes, reconnect to the WPS-1 Wi-Fi network. (If you have initial test prints turned ON, reconnect once your test image prints.)
7. Refresh the Configuration page to confirm the change has been made.
8. You can now print from your devices using FTP. For more information, see “Printing from Mobile Devices” on page 92.

Configuring Borders

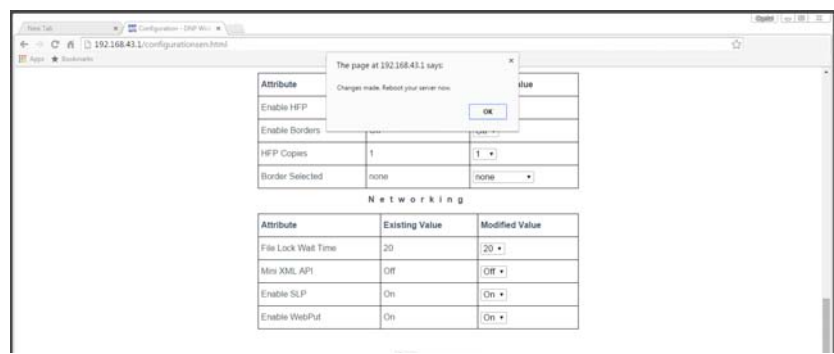
This procedure explains how to enable or disable borders for images you transfer using FTP. For more information on setting up and enabling custom borders, see “Custom Borders” on page 69.

1. Under the **FTP** section of the configuration web page, locate the **Enable Borders** option.

F T P		
Attribute	Existing Value	Modified Value
Enable FTP	On	On ▾
Enable Borders	On	On ▾
FTP Copies	1	1 ▾
FTP Queue	WPSd885-DS40-1-6x8	WPSd885-DS40-1-6x8 ▾
Border Selected	ribbons-lace	ribbons-lace ▾

2. Change the drop-down option to **ON** to enable borders or **OFF** to disable borders.
3. At the bottom of the page, click the **Save** button.

- 4. A blue progress wheel appears as your changes are saved. When the “Changes made...” message appears, press the **OK** button.



- 5. Wait at least one minute and then reboot your WPS-1 device.
- 6. After three minutes, reconnect to the WPS-1 Wi-Fi network. (If you have initial test prints turned ON, reconnect once your test image prints.)
- 7. Refresh the Configuration page to confirm the change has been made.
- 8. Now images printed using FTP transfer will have the selected border applied.

Changing the Number of Copies Printed

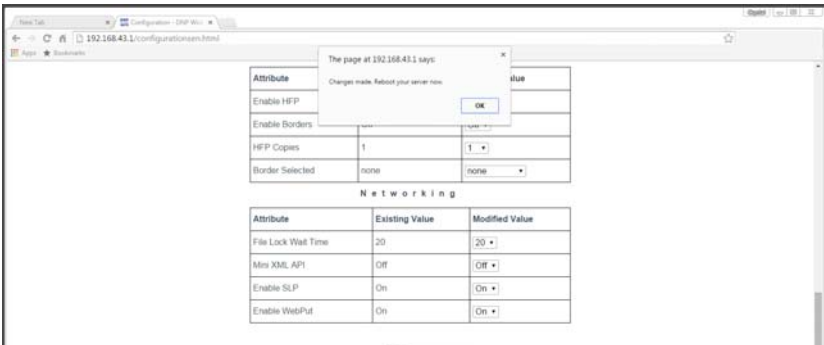
Sets the number of copies for each image that is transferred using the FTP transfer method.

- 1. Under the **FTP** section of the configuration web page, locate the **FTP Copies** option.

F T P		
Attribute	Existing Value	Modified Value
Enable FTP	On	On ▾
Enable Borders	On	On ▾
FTP Copies	1	1 ▾
FTP Queue	WPSd885-DS40-1-6x8	WPSd885-DS40-1-6x8 ▾
Border Selected	ribbons-lace	ribbons-lace ▾

- 2. Change the drop-down option to **the number of copies** you want printed for each image. You can choose any number between 0 and 49.
- 3. At the bottom of the page, click the **Save** button.

- 4. A blue progress wheel appears as your changes are saved. When the “Changes made...” message appears, press the **OK** button.



- 5. Wait at least one minute and then reboot your WPS-1 device.
- 6. After three minutes, reconnect to the WPS-1 Wi-Fi network. (If you have initial test prints turned ON, reconnect once your test image prints.)
- 7. Refresh the Configuration page to confirm the change has been made.
- 8. Now images printed using FTP transfer will print the number of copies you selected.

Selecting the Printer Queue

Selects the default printer and print size.

- 1. Under the **FTP** section of the configuration web page, locate the **FTP Queue** option.

FTP

Attribute	Existing Value	Modified Value
Enable FTP	On	On ▾
Enable Borders	On	On ▾
FTP Copies	1	1 ▾
FTP Queue	WPSd885-DS40-1-6x8	WPSd885-DS40-1-6x8 ▾
Border Selected	ribbons-lace	ribbons-lace ▾

- 2. Change the drop-down option to the printer and default print size you want.

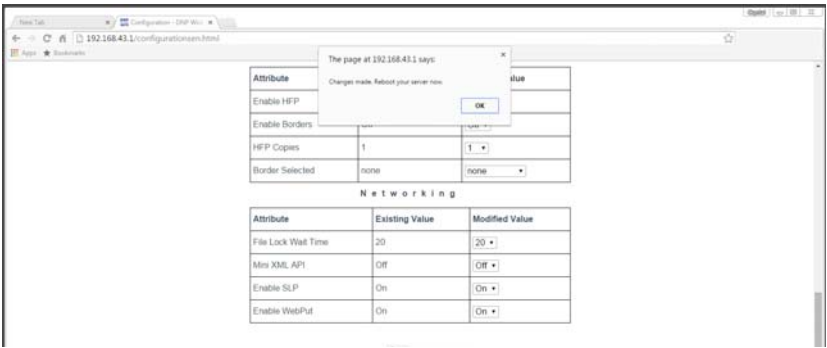


Note

If you are setting the print queue to a 2” cut option, be sure you have enabled 2” photo strips for your media size. See “Changing the Printing Size Options” on page 78 for more information.

- 3. At the bottom of the page, click the **Save** button.

- 4. A blue progress wheel appears as your changes are saved. When the "Changes made..." message appears, press the **OK** button.



- 5. Wait at least one minute and then reboot your WPS-1 device.
- 6. After three minutes, reconnect to the WPS-1 Wi-Fi network. (If you have initial test prints turned ON, reconnect once your test image prints.)
- 7. Refresh the Configuration page to confirm the change has been made.

Selecting Borders

Use this option to select a border to print on all of your images. For more information on setting up and enabling custom borders, see "Custom Borders" on page 69.

- 1. Under the **FTP** section of the configuration web page, locate the **Border Selected** option.

FTP

Attribute	Existing Value	Modified Value
Enable FTP	On	On ▾
Enable Borders	On	On ▾
FTP Copies	1	1 ▾
FTP Queue	WPSd885-DS40-1-6x8	WPSd885-DS40-1-6x8 ▾
Border Selected	ribbons-lace	ribbons-lace ▾

- 2. Change the drop-down option to the border you want to print.
- 3. At the bottom of the page, click the **Save** button.

4. A blue progress wheel appears as your changes are saved. When the "Changes made..." message appears, press the **OK** button.



5. Wait at least one minute and then reboot your WPS-1 device.
6. After three minutes, reconnect to the WPS-1 Wi-Fi network. (If you have initial test prints turned ON, reconnect once your test image prints.)
7. Refresh the Configuration page to confirm the change has been made.
8. The border you have selected is printed on your images.

Configuring HFP Settings

HFP, or Hot Folder Printing, is a transfer method where a hot folder (or “watched folder”) is continuously monitored by the WPS-1 system. Images copied into this folder are automatically printed and then removed. Hot folders are used both for manual image imports (copying and pasting files into the hot folder) and for integration with third party software (often via FTP to the hot folder). Hot folder printing allows you to load larger quantities of prints at a time to the print folder.

Configuring HFP

Enables or disables the HFP transfer option. Only enable HFP if you are planning on using that transfer option. If you disable the HFP transfer option, be sure to enable the FTP transfer option.

1. Under the **HFP** section of the configuration web page, locate the **Enable HFP** option.

H F P (H o t F o l d e r)

Attribute	Existing Value	Modified Value
Enable HFP	On	On ▼
Enable Borders	On	On ▼
HFP Copies	1	1 ▼
Border Selected	elegant	elegant ▼

2. Change the drop-down option to **ON** or **OFF**.
3. At the bottom of the page, click the **Save** button.
4. A blue progress wheel appears as your changes are saved. When the “Changes made...” message appears, press the **OK** button.



5. Wait at least one minute and then reboot your WPS-1 device.
6. After three minutes, reconnect to the WPS-1 Wi-Fi network. (If you have initial test prints turned ON, reconnect once your test image prints.)
7. Refresh the Configuration page to confirm the change has been made.
8. You can now transfer your images to WPS-1 using HFP.

Configuring Borders

Enables or disables borders for images you transfer using HFP. For more information on setting up and enabling custom borders, see "Custom Borders" on page 69.

1. Under the **HFP** section of the configuration web page, locate the **Enable Borders** option.

H F P (H o t F o l d e r)

Attribute	Existing Value	Modified Value
Enable HFP	On	On ▼
Enable Borders	On	On ▼
HFP Copies	1	1 ▼
Border Selected	elegant	elegant ▼

2. Change the drop-down option to **ON** or **OFF**.
3. At the bottom of the page, click the **Save** button.
4. A blue progress wheel appears as your changes are saved. When the "Changes made..." message appears, press the **OK** button.



5. Wait at least one minute and then reboot your WPS-1 device.
6. After three minutes, reconnect to the WPS-1 Wi-Fi network. (If you have initial test prints turned ON, reconnect once your test image prints.)
7. Refresh the Configuration page to confirm the change has been made.
8. You can now add borders to your images.

Changing the Number of Copies Printed

Changes the number of copies of each print you order.

1. Under the **HFP** section of the configuration web page, locate the **HFP Copies** option.

HFP (Hot Folder)

Attribute	Existing Value	Modified Value
Enable HFP	On	On ▼
Enable Borders	On	On ▼
HFP Copies	1	1 ▼
Border Selected	elegant	elegant ▼

2. Change the drop-down option to **the number of copies** you want printed for each image. You can choose any number between 0 and 49.
3. At the bottom of the page, click the **Save** button.
4. A blue progress wheel appears as your changes are saved. When the "Changes made..." message appears, press the **OK** button.



5. Wait at least one minute and then reboot your WPS-1 device.
6. After three minutes, reconnect to the WPS-1 Wi-Fi network. (If you have initial test prints turned ON, reconnect once your test image prints.)
7. Refresh the Configuration page to confirm the change has been made.
8. Now images printed using HFP transfer will print the number of copies you selected.

Selecting Borders

Use this option to select a border to print on all of your images. For more information on setting up and enabling custom borders, see "Custom Borders" on page 69.

1. Under the **HFP** section of the configuration web page, locate the **Border Selected** option.

H F P (H o t F o l d e r)

Attribute	Existing Value	Modified Value
Enable HFP	On	On ▼
Enable Borders	On	On ▼
HFP Copies	1	1 ▼
Border Selected	elegant	elegant ▼

2. Change the drop-down option to the border you want to print.
3. At the bottom of the page, click the **Save** button.
4. A blue progress wheel appears as your changes are saved. When the "Changes made..." message appears, press the **OK** button.



5. Wait at least one minute and then reboot your WPS-1 device.
6. After three minutes, reconnect to the WPS-1 Wi-Fi network. (If you have initial test prints turned ON, reconnect once your test image prints.)
7. Refresh the Configuration page to confirm the change has been made.
8. The border you have selected is printed on your images.

Configuring the Networking Options

Changing the File Lock Wait Time

The file lock wait time tells the WPS-1 system how long to wait for a file to complete transmission. In noisy WIFI environments, there can be lots of competition for the signal space. Extending the wait time allows for slower transmission speeds before a "time out" or failure condition occurs. In a less congested WIFI environments, the longer wait time is not necessary. However, having a longer wait time specified will not affect performance.

1. Under the **Networking** section of the configuration web page, locate the **File Lock Wait Time** option.

Networking

Attribute	Existing Value	Modified Value
File Lock Wait Time	20	20 ▼
Mini XML API	Off	Off ▼
Enable SLP	Off	Off ▼
Enable WebPut	On	On ▼

2. Change the drop-down option to the **number of seconds** you want to lock incoming files.
3. At the bottom of the page, click the **Save** button.
4. A blue progress wheel appears as your changes are saved. When the "Changes made..." message appears, press the **OK** button.



5. Wait at least one minute and then reboot your WPS-1 device.
6. After three minutes, reconnect to the WPS-1 Wi-Fi network. (If you have initial test prints turned ON, reconnect once your test image prints.)
7. Refresh the Configuration page to confirm the change has been made.

Configuring SLP

Allows or disables SLP broadcasting.



Attention

If you disable SLP broadcasting, you cannot print your images using native print drivers.

1. Under the **Networking** section of the configuration web page, locate the **Enable SLP** option.

Networking

Attribute	Existing Value	Modified Value
File Lock Wait Time	20	20 ▼
Mini XML API	Off	Off ▼
Enable SLP	Off	Off ▼
Enable WebPut	On	On ▼

2. Change the drop-down option.
3. At the bottom of the page, click the **Save** button.
4. A blue progress wheel appears as your changes are saved. When the "Changes made..." message appears, press the **OK** button.



5. Wait at least one minute and then reboot your WPS-1 device.
6. After three minutes, reconnect to the WPS-1 Wi-Fi network. (If you have initial test prints turned ON, reconnect once your test image prints.)
7. Refresh the Configuration page to confirm the change has been made.

Configuring WebPut

Enables WebPut services. If you disable WebPut, you can NOT print your images using the WPS Print 2 App or the WPS Camera app.

1. Under the **Networking** section of the configuration web page, locate the **Enable WebPut** option.

Networking

Attribute	Existing Value	Modified Value
File Lock Wait Time	20	20 ▼
Mini XML API	Off	Off ▼
Enable SLP	Off	Off ▼
Enable WebPut	On	On ▼

2. Change the drop-down option to **ON** or **OFF**.
3. At the bottom of the page, click the **Save** button.
4. A blue progress wheel appears as your changes are saved. When the "Changes made..." message appears, press the **OK** button.



5. Wait at least one minute and then reboot your WPS-1 device.
6. After three minutes, reconnect to the WPS-1 Wi-Fi network. (If you have initial test prints turned ON, reconnect once your test image prints.)
7. Refresh the Configuration page to confirm the change has been made.



DNP Imagingcomm America Corporation

4524 Enterprise Drive NW

Concord, NC 28027

1-855-367-7604 or (724) 696-8957

www.dnpphoto.com

www.dnpimagingcomm.com
