

Passport & ID Photo Booth

**YOU PROVIDE THE
LOCATION — WE'LL
PROVIDE THE PROFIT!**



Passport & ID Photo Booth

No Capital Investment • Revenue Share Turn Key Program



Reliable

Our ID and Visa photos conform to the ICAO (International Civil Aviation Organization) standards. Thus **eliminating rejections** and keeping your customers happy!



Accounting

With no capital investment, you start earning profits from your very first sale with our Revenue Sharing Program. Our financial team will handle all sales tax, fees, surcharges, and accounting. A check will be made payable to you every month.



Customer Service

We take care of everything! Our technicians handle the transportation and placement of the Passport and ID Photo Booth, media replacement, maintenance, and any customer service call placed by the end user.



Interface

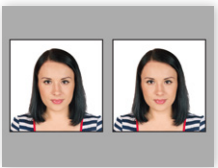
The booth comes equipped with a user-friendly interface, multiple language support, and audio guidance. This allows your customer to quickly capture and print their desired photo – all on a 18.5" HD touchscreen display.

- Backlit poster and an optional lighted top sign will help to grab your customer's attention
- Adjustable seat
- Small footprint that allows for placement anywhere there is an outlet
- Custom outer wrap option, which allows you to tailor the booth's graphics to meet your needs

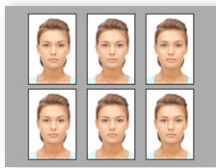
All we need from you is:

- High traffic consumer location
- 10 square feet of space
- A standard electrical outlet

Passport and ID, plus more!



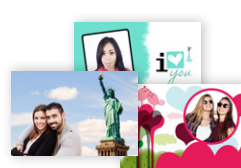
Passport/ID Photos - Domestic and Foreign



Portrait Photos



4 Poses



Fun Photos

Specifications

Camera: 5 million pixels

Printer: DNP DS-RX1HS™ (dye-sub thermal printer)

Resolution: 300 dpi

Print speed: 12.4 seconds

Print format: 4"x6"

Capacity: 700 prints

Weight: 507 lb.

Consumables: Roll thermal photo paper, dye sublimation ink ribbon

Dimensions: No top sign: 75.5"(H) x 47"(W) x 29.5"(D)
With top sign: 86"(H) x 47"(W) x 29.5"(D)

Consumption: Standby mode 460W, printing mode 690W

Power supply: 110V 12amps

