

Technical Bulletin: DRIVER INSTALLATION GUIDE FOR DNP DS-SERIES PRINTER

Contents

- Overview 3**
- Installing DS-Series Printer Driver 3

Overview

The Driver Installation tool allows you to quickly update the drivers for all your DS-Series printers. The Driver Installation tool is compatible with Windows 7, 8 and 10. Currently, you can use the Driver Installation tool to update the drivers on your DS620A and RX1HS printers.

Installing DS-Series Printer Driver

Use the following instructions to install the driver for your DS-Series printer(s):

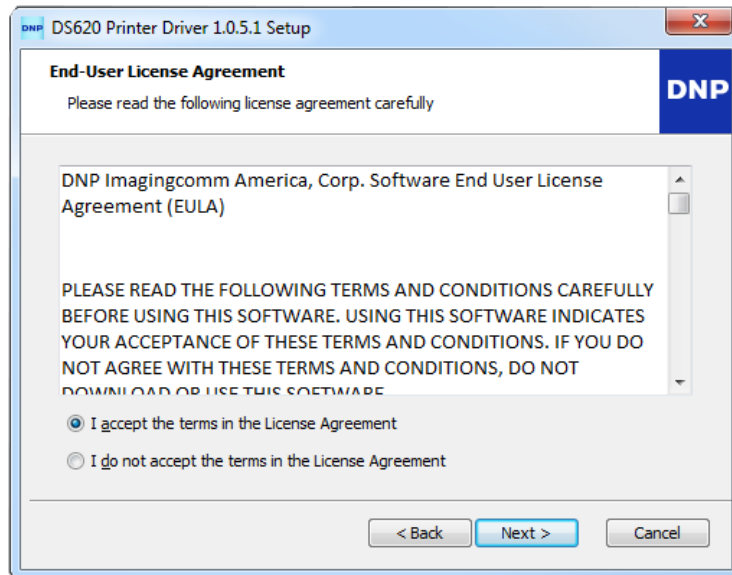
1. From your browser, navigate to the following site: <http://dnpphoto.com/Support/Downloads>
2. Download the appropriate driver for your DS-Series printer.
3. Navigate to the location where you downloaded the file. Double-click the **Printer Driver** application file.



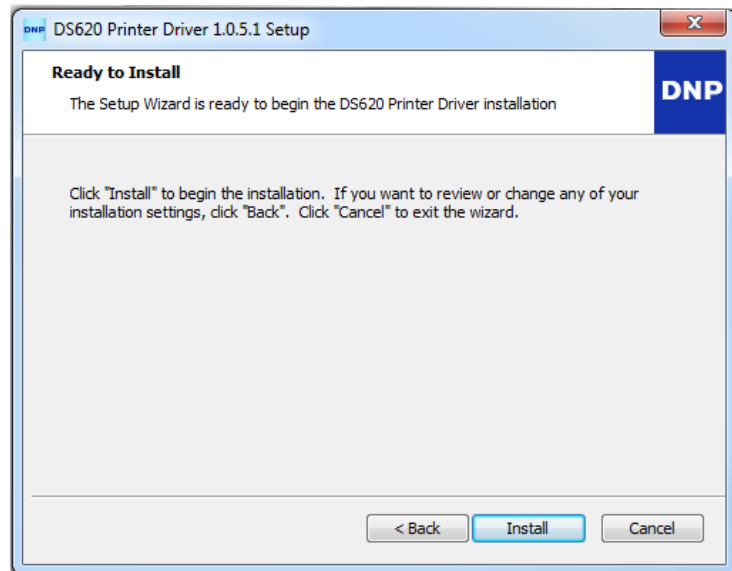
IMPORTANT NOTE: This DNP printer driver can be installed on Windows 7, 8 and 10 OS. Installing onto Windows 11 OS may cause an installation failure or printing mis-operations.

4. Click the **Next** button.

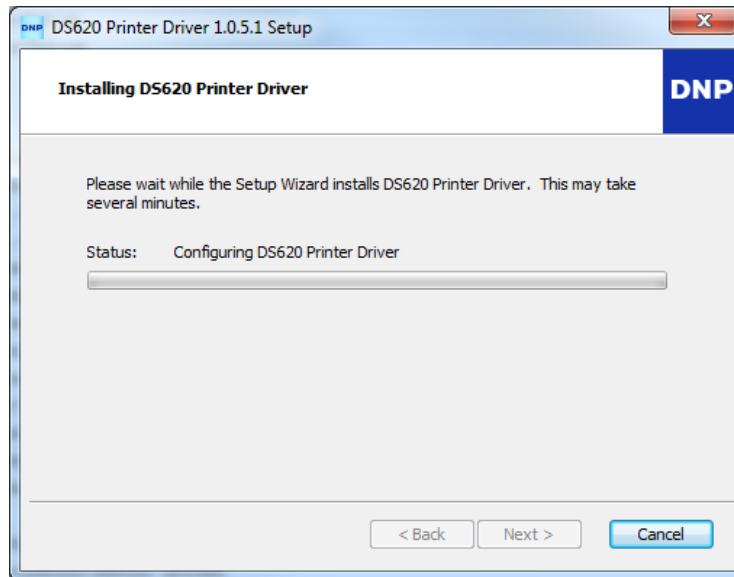
- 5. From the **End-User License Agreement** screen, select the I accept the terms of the **License Agreement** radio button and then click the **Next** button.



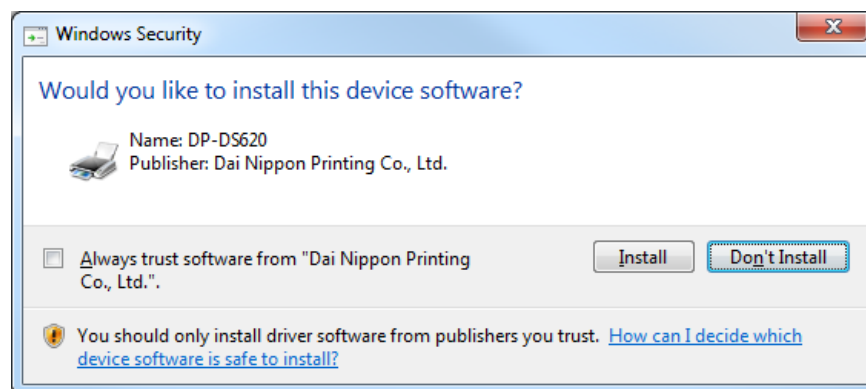
- 6. Click the **Install** button to begin the Installation process.



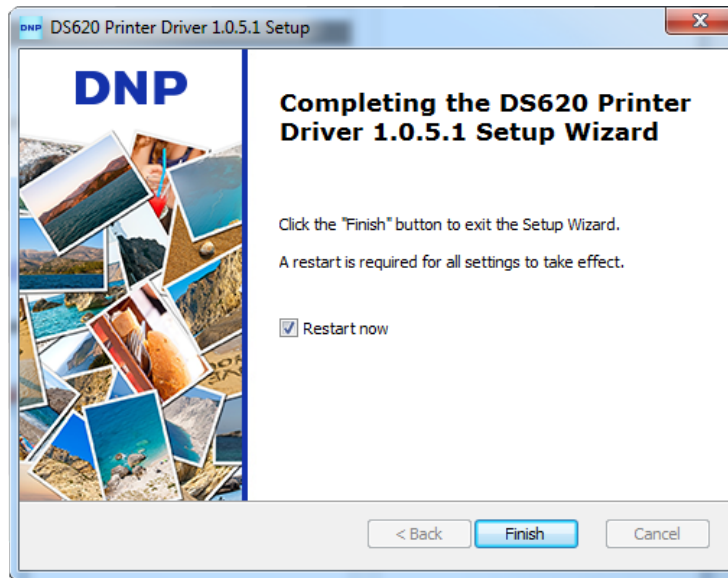
- The **Printer Driver** dialog box is displayed, showing the progress of the installation.



- When the **Windows Security** dialog box appears, click the **Install** button.



- When the **Driver Installation** tool has completed the update, click the **Finish** button. Upon clicking the **Finish** button, your system is re-started. If you do not wish to restart your computer, un-check the **Restart Now** checkbox. You will need to manually restart your system for the install to be completed.



- On the **Windows Restart** dialog box, click the **Yes** button.



NOTE: After your system re-starts, a second restart is required for the Fine Matte print finish to become functional.
