

README file Software Update v2020.3.0 Build 311

Released: 2020-08

Wireless Connect Module WCM-1

Version Update Release Info:

The newest software version for the WCM-1 is now available to use:
v2020.03.0 Build 311



NOTE: Improvements to the WCM are cumulative, features added to previous versions are also contained in this new update.

If you have any questions, please contact DNP Support or your DNP photo product reseller.

System Feature and Functionality Summary:

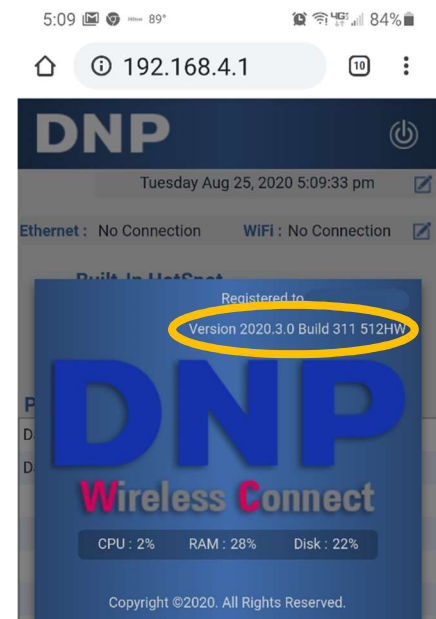
2020-08 Update v2020.3.0 Build 311

- The imaging processing engine and print spooler have been optimized for faster performance (improves the image processing time by about 20%).
- The WiFi hotspot connection timeout for the Access Point of the WCM has been corrected. It's now set to infinite for uninterrupted service (previously set to 12 hours).
- Added support for DS40 and DS80 and support for their related print sizes.
- Corrected a potential print preview blanking issue with iOS—intermittent 'shows a blank image preview' on DS620A and DS40.

Checking the Version of WCM-1

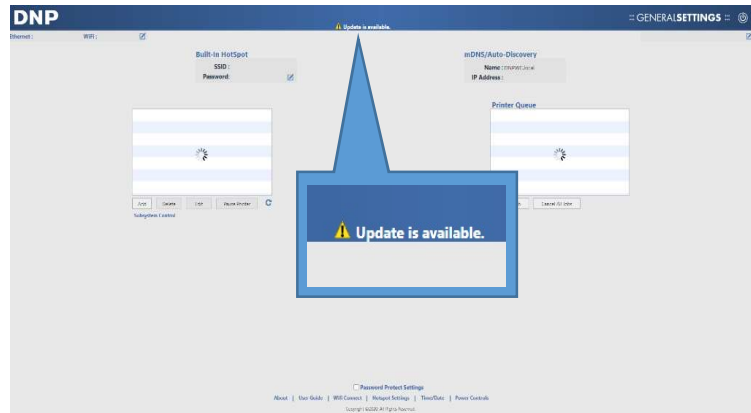
To determine if an update is available for the Wireless Connect Module:

- Connect to the WCM Hotspot **DNPWirelessConnect** with your iOS, Android, Laptop, or PC.
- Open the WCM portal in a web browser.
- Enter **192.168.4.1** or **dnpsc.local** in the address bar.
- **TAP** the DNP Logo at the top and the WCM system info screen will appear showing the version info and build number.
 - If your device has a lower version, it can be updated.
 - After the update, you can use this same step to verify the new version update was applied.



UPDATING the WCM-1

- Connect the device to the internet, either through an Ethernet connection or a WiFi network connection. Refer to the user guide for setup details.
- Once the WCM is online, it will automatically check for an update and download it in the background. Normal operations can continue to be used.
- A notification, stating “**! Update is available.**” will appear in the upper, center of the WCM Portal after the download completes.
- **TAP** on the notification. That notification is a link that will open a new window explaining what the new version contains.
- NOTE: Once connected to the internet, updates are automatically pushed to the device when they are made available. It may take 15~20 minutes or longer after connecting to the internet for the “**! Update is available**” notification to appear, depending on internet connection speed and traffic.
- Choose **Update** or **Cancel** when the update window appears. The update button will install the latest software version, or cancel which will not install the latest update.
NOTE: The “**! Update is available**” link will remain
 - Tech Tip: Updates are cumulative, if an update is not installed before the next new update is available, the new update will contain all the previous updates. In other words, there’s no need to perform incremental updates.
- The WCM-1 will reboot automatically once the update is installed.
- During the reboot process the WCM will disconnect from the DNPWirelessConnect hotspot and begin to rebroadcast the SSID once the reboot has completed.
- The update process, including the reboot, will take approximately 2 or 3 minutes before the DNPWirelessConnect hotspot is available.
- Connect to the WCM home page as before, **192.168.4.1** or **dnppwc.local** to continue operations.
- **One final note**, the update is not reversible, once it is installed it cannot be uninstalled.



DNP Technical Support Contact Information

Phone US and Canada: 1-855-367-7604 or +1-980-777-1178

Email: dnpsupport@dnp.imgcomm.com

Other links:

Product Link WCM-1: <http://dnpphoto.com/en-us/Products/Accessories/WCM>

User Guides for WCM-1: http://dnpphoto.com/Portals/0/Resources/WCM_User_Guide.pdf

<http://dnpphoto.com/en-us/>

©2020 DNP Imagingcomm America Corp.

2020-08-31c ENBI