



DIGITAL PHOTO PRINTER

Mac Printer Driver for OS X

Printer Driver Instruction Manual v5.1.2

License Agreements

SOFTWARE END USER LICENSE AGREEMENT (EULA). PLEASE READ THE FOLLOWING TERMS AND CONDITIONS CAREFULLY BEFORE USING THIS SOFTWARE. USING THIS SOFTWARE INDICATES YOUR ACCEPTANCE OF THESE TERMS AND CONDITIONS. IF YOU DO NOT AGREE WITH THESE TERMS AND CONDITIONS, DO NOT DOWNLOAD OR USE THIS SOFTWARE. This Software License Agreement (the "Software License Agreement") is an agreement entered into by and between you (hereinafter referred to as "You" or "Your") and DNP Imagingcomm America Corporation (DNP IAM) (the "Licensor") for any and all software and documentation provided by the Licensor (the "Software"). The Software includes items available either by Internet download, contained in a CD/DVD or contained within a 3rd party software installer. By using the Software, You agree to the terms of this Software License Agreement. The Licensor grants You a non-exclusive, non-transferable license to use one copy of the Software in object code only.

OWNERSHIP RETAINED BY LICENSOR. The Licensor owns all title and copyrights in and to the Software and the Licensor has the full right and authority to grant the license granted herein. Your license does not give You any title or ownership in the Software, nor is it a sale of any rights in the Software. The only right granted to You is the right to use the Software in accordance with the terms of this Software License Agreement. All rights not specifically granted to You under this Software License Agreement are reserved by the Licensor. You may make only a single copy of the Software as a backup copy, provided that it includes all notices and markings, including copyright, trademark and other proprietary notices as on the original. Such backup copy of the Software may not be in use at any time unless the original Software is damaged beyond use, and both the original and the copy must remain in Your possession and control. You may not copy the software onto any public network. You may not, and You may not allow others to modify, disassemble, decompile, translate, reverse engineer, reproduce, make derivative works of or enhance the Software. You may not, and You may not allow others to rent, lease, sell, sub license, export or otherwise transfer the Software to any other person. In addition to any other rights it may have, the Licensor may terminate this Software License Agreement if You fail to comply with the terms and conditions hereof. In such event, You must cease all use of the Software and destroy all copies of the Software and all of its component parts. At the Licensor's sole discretion, the Licensor may from time to time provide You with updates to the Software. Any such updates shall become part of the Software licensed to You hereunder and subject to all of the terms and conditions of this Software License Agreement.

DISCLAIMER OF WARRANTIES. The Licensor expressly disclaims any and all warranties relative to the Software. THE SOFTWARE IS PROVIDED "AS IS," WITHOUT WARRANTY OF ANY KIND, EXPRESS OR IMPLIED, INCLUDING, WITHOUT LIMITATION, THE IMPLIED WARRANTIES OF MERCHANTABILITY AND FITNESS FOR A PARTICULAR PURPOSE, NON-INFRINGEMENT, COURSE OF DEALING AND USAGE OF TRADE. YOU HEREBY ASSUME THE ENTIRE RISK AS TO THE QUALITY AND PERFORMANCE OF THE SOFTWARE.

LIMITATION OF LIABILITY. In no event shall the Licensor be liable for any direct, special, incidental, indirect or consequential damages whatsoever to You (including, without limitation, damages for loss of profits, sales or data or for business interruption) arising out of the use of or inability to use the Software, even if the Licensor has been advised of the possibility of such damages. In any event, the Licensor's entire liability under any provision shall be limited to the amount actually paid by You for the Software. Because some states and jurisdictions do not allow the exclusion or limitation of liability, the above limitation may not apply to You. If any provision of the Software License Agreement is declared by a court of competent jurisdiction to be invalid for any reason, such invalidity shall not affect the remaining provisions hereof.

GOVERNING LAW. This Software License Agreement shall be governed by the laws of the State of North Carolina without regard to conflict of laws principles. You and the Licensor hereby consent to the exclusive venue and jurisdiction of the state and federal courts located in Mecklenburg County, North Carolina.

TAXES. You are responsible for all taxes or charges imposed by any government or regulatory authority with respect to the delivery and use of the Software, but exclusive of any taxes based upon the Licensor's net income.

TERM. This License Agreement is effective until terminated. You may terminate this License Agreement by ceasing to use the Software and, if applicable, returning the Software to the Licensor. Licensor may terminate this License Agreement if You breach any of the terms and conditions. Upon termination of this License Agreement for any reason, You shall cease using the Software and, if applicable, return the Software to the Licensor. All provisions of this Agreement relating to disclaimers of warranties, limitation of liability, remedies, or damages, and Licensor's proprietary rights shall survive termination.

ACKNOWLEDGMENTS. The ICC profiles provided by DNP Imagingcomm America Corporation are prepared using the technology of X-Rite, Incorporated. YOU ACKNOWLEDGE YOU HAVE READ AND UNDERSTAND THIS AGREEMENT AND AGREE TO BE BOUND BY ITS TERMS. YOU FURTHER AGREE THAT THIS AGREEMENT IS THE COMPLETE AND EXCLUSIVE STATEMENT OF THE AGREEMENT BETWEEN YOU AND LICENSOR, AND SUPERSEDES ANY PROPOSAL OR PRIOR AGREEMENT, ORAL OR WRITTEN, AND ANY OTHER COMMUNICATIONS RELATING TO THE SOFTWARE ADDRESSED IN THIS AGREEMENT.

The information contained in this document represents the current view of DNP Imagingcomm America Corporation on the issues discussed as of the date of publication. Because DNP Imagingcomm America Corporation must respond to changing market conditions, it should not be interpreted to be a commitment on the part of DNP Imagingcomm America Corporation, and DNP Imagingcomm America Corporation cannot guarantee the accuracy of any information presented after the date of publication. This document is for informational purposes only. DNP Imagingcomm America Corporation MAKES NO WARRANTIES, EXPRESSED OR IMPLIED, AS TO THE INFORMATION IN THIS DOCUMENT.

Complying with all applicable copyright laws is the responsibility of the user. Without limiting the rights under copyright, no part of this document may be reproduced, stored in or introduced into a retrieval system, or transmitted in any form or by any means (electronic, mechanical, photocopying, recording, or otherwise), or for any purpose, without the express written permission of DNP Imagingcomm America Corporation

DNP Imagingcomm America Corporation may have patents, patent applications, trademarks, copyrights, or other intellectual property rights covering subject matter in this document. Except as expressly provided in any written license agreement from DNP Imagingcomm America Corporation, the furnishing of this document does not give you any license to these patents, trademarks, copyrights, or other intellectual property.

WPS-1™, WPS Pro™, Tomo™, Hot Folder Print™, PrintCenter™, DS-Series Printers™, and PrintTurbine™ are trademarks and Nexlab® is a registered trademark of DNP Imagingcomm America Corporation PrintRush® and Party Print® are registered trademarks of Dai Nippon Printing Company LTD. Apple, the Apple logo, iPad, and iPhone are trademarks of Apple Inc., registered in the U.S. and other countries. App Store is a service mark of Apple Inc. Amazon is a trademark of Amazon.com Inc. or its affiliates. Android and Google Play are trademarks of Google, Inc. SD, SDHC and SDXC are trademarks or registered trademarks of SD-3C, LLC in the United States, other countries or both. Sony® and Cyber-shot® are the registered trademarks of the Sony Corporation. FlashAir™ is the trademark of Toshiba Corporation. PiPO™ is the trademark of PiPO Corporation. The names of actual companies and products mentioned herein may be the trademarks of their respective owners.

DNP Imagingcomm America Corporation * 4524 Enterprise Dr NW * Concord, NC 28027 * USA

© 2000-2020 DNP Imagingcomm America Corporation All rights reserved.

CONTENTS

1. Before You Begin

Documentation Conventions	7
Text Elements	7
Text Treatments	7
Important Safety Instructions	8
General Safety Precautions	8
Contact Us	8

2. Introduction

System Requirements	9
What's New in v5.1.2?	9

3. Installing the Mac Printer Driver for OS X

Getting Started	11
Installing the Driver	11
Turning ON the Printer	16
Uninstalling the Driver	16
Troubleshooting	16

4. Using the Mac Printer Driver for OS X

Opening the Printer Preferences Window	17
Exploring the Standard Printer Options	18
About Paper Size	19
About Orientation	20
Exploring the Preview Print Options	21
Exploring the Layout Options	22
Exploring the Paper Handling Options	23
Exploring the Multi-Cut Functionality for DS80 and DS820	24
Exploring the QW410 Printer	27
Activating the Decurling functionality	27
QW410 Print Sizes	28
Exploring the Supply Level Options	28
Opening the DNP Printer Options	29
Changing the Image Settings	30
Changing the Color Settings	31
Using the Advanced Settings	32
About Retry Printing	33
Viewing the Printers and Scanners Preferences	34
Changing Default Printer Settings	34

Changing the ICC Profile 35

Supported Print Sizes 36

5. iSerial Tool

About the iSerial Tool 39

Enabling iSerial Functionality 39

Changing Languages 41

Before You Begin

Use the information in this chapter to better understand this document and any standard procedures or warnings that may come with your product.

Documentation Conventions

When using this document, several text elements and treatments are repeated throughout. The following is an explanation of these symbols and headings:

Text Elements



Attention

This denotes important information concerning safety when working with the equipment. Failure to comply with an Attention statement can cause you injury or harm or cause damage to the system.



Note

This signifies convenient or useful instructions.



Used to denote a procedure that requires two people to lift a heavy item.



Warns of a time-sensitive step. Be sure to read the surrounding instructions completely before performing this operation.



Signifies an item that needs to be entered on the specified form.

Text Treatments

Bold Text – Indicates items you can select, such as buttons and menu entries.

Italic Text – Indicates variable text or placeholders for information, such as user names and directory paths. When entering directory paths and so forth, the word in italics should not be typed, but should be replaced by the appropriate text. Italic text also introduces new words and is occasionally used for emphasis in text.

Monospace– Distinguishes information that is displayed on the screen, as well as the text that you should enter.

Important Safety Instructions

Safety is paramount when installing and operating the system. These safety instructions are to protect you and the customer and the overall public. The following bullet points apply to the safety instructions in this manual:

- ❖ Read all of these instructions before setting up, installing, and operating your system.
- ❖ Follow all warnings, safety precautions, and notices for all procedures in this manual.
- ❖ When in doubt, stop what you are doing and reassess the safety of the situation or procedure. Never continue with a step or procedure when there is the slightest doubt regarding safety.
- ❖ Save these instructions for future reference.

General Safety Precautions

- ❖ Never install or setup the system near water.
- ❖ Never place the system on an unstable platform.
- ❖ Never place the system near a heat source, such as a heater or furnace.
- ❖ Never perform any of these steps while wearing jewelry (rings, loose necklaces, bracelets, etc.), neckties, or other clothing that could get caught in the equipment. These items can get caught in the equipment or may conduct electricity and cause injury.
- ❖ Never insert any foreign object into the system unit without powering the system OFF first.
- ❖ Never block ventilation ports; allow plenty of room around the system for ventilation.
- ❖ Never use water or liquid to extinguish a fire on the system unit.
- ❖ Always protect the power cord from accidental kinks, cuts, and foot traffic.
- ❖ Always operate this system from the correct type of grounded power source.
- ❖ Always clean and maintain the system in the prescribed manner as instructed in this manual.
- ❖ Always use this equipment in the specified manner as recommended by the manufacturer.
- ❖ Failure to observe safety precautions voids your warranty and may cause damage to the unit and could result in personal injury or death.

Contact DNP Imagingcomm America Corporation immediately if:

- ❖ The system is damaged due to fire or flood; or is otherwise unsafe to operate.
- ❖ Any part of the system is dropped, cracked, or is not operating properly after performing cleaning and maintenance.
- ❖ You have any questions not answered in this manual.

Contact Us

Need help? Contact DNP Imagingcomm America Corporation technical support at:

United States Phone: 1-855-367-7604 or (724) 696-8957

Latin America Phone: 1-855-367-8008 or (724) 696-8958

Email: dnpsupport@dnpiimgcomm.com

Website: www.dnpphoto.com

For hours of operation, see our website.

Introduction

Use the book to install and learn about your DNP Imagingcomm America Corporation Mac Printer Driver for OS X. The printer driver can be used with any DNP printer.

System Requirements

The DNP printer driver provides printing functionality similar to the Microsoft Windows printer driver for the DNP IAM DS-Series and RX-Series printers.

The following OS versions and processor architectures are supported:

- ❖ Mac OS 10.12 (Sierra)
- ❖ Mac OS 10.13 (High Sierra)
- ❖ Mac OS 10.14 (Mojave)

All executable modules should be 64-bit Intel binaries and support:

- ❖ Intel 64-bit processor architecture (x86_64)

What's New in v5.1.2?

The following is a list of the new features in this release:

- ❖ **Decurl functionality.**
 - ◆ For the QW410 printer, you can select the **DeCurl** option from the **Printer Properties** screen to decurl your images as they are printed.
- ❖ **New print sizes for the QW410 printer.**
 - ◆ 4.4
 - ◆ 4.5x4.5
 - ◆ 4.6
 - ◆ 4.5x8

Installing the Mac Printer Driver for OS X

Getting Started

Before you install your printer drivers, be sure you have done the following:

1. Installed paper and ribbon in your DNP IAM printer.
2. Turned your printer ON.
3. Verified that there are no error lights on your printer.
4. Verified that your printer is NOT connected to your Mac with a USB cable at this time. You can disconnect the USB cable from the Mac only - you do not need to disconnect the cable from both the printer and the Mac.
5. If you have previously had a DNP printer installed on your Mac, go to **System Preferences > Print & Fax**. If a DNP DS/RX series printer is listed, delete that printer from the list

Installing the Driver



Attention

If the DS/RX printer is connected to your Mac, unplug the USB cable from your Mac device. Do not proceed until your printer is disconnected from your Mac.

1. From your browser, navigate to the following site: <http://dnpphoto.com/Support/Downloads/DriversTools.aspx>
2. Under the **Printer Drivers for Mac** section, download the **Mac OS-X Driver for DS40/Ds80/RX1/DS620A/DS80DX** file.
3. Navigate to the location where you downloaded the file. Double-click the **DNP Install.dmg** file.

4. In the next window, double-click the **DNP DS Printer Drivers** icon.

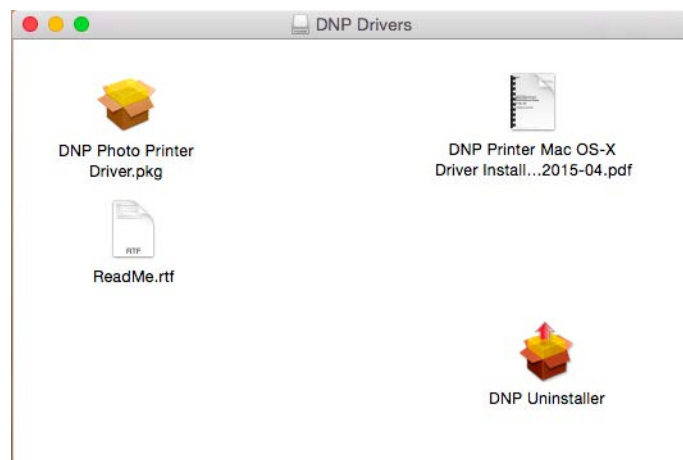


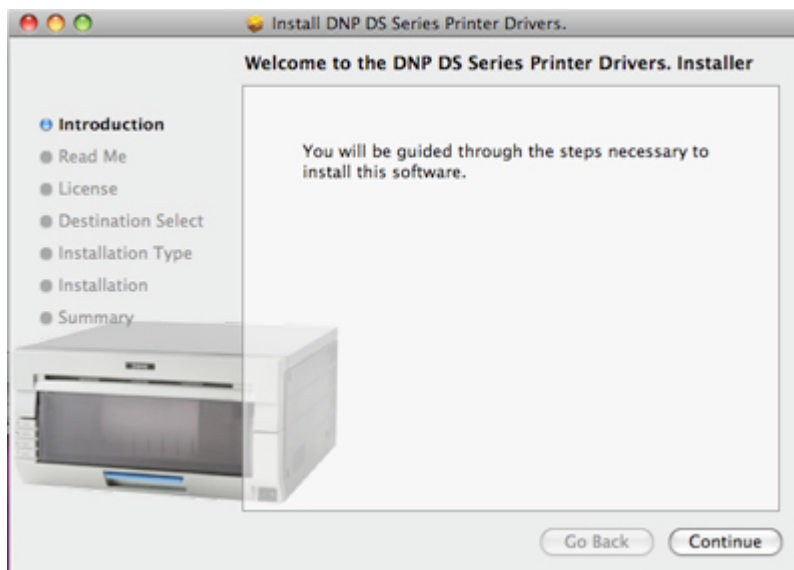
Figure 1. DS Printer Drivers Icon



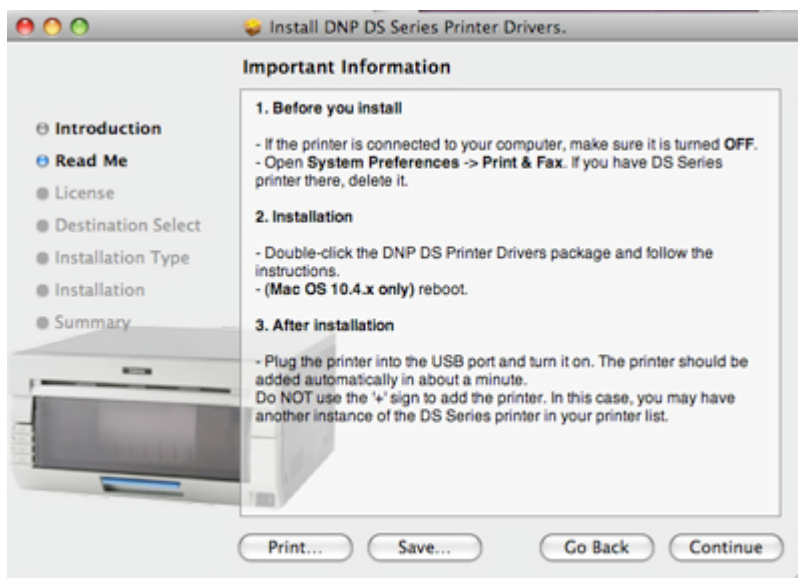
Note

Depending on which driver you are installing, you may see a either DS or RX printer names listed.

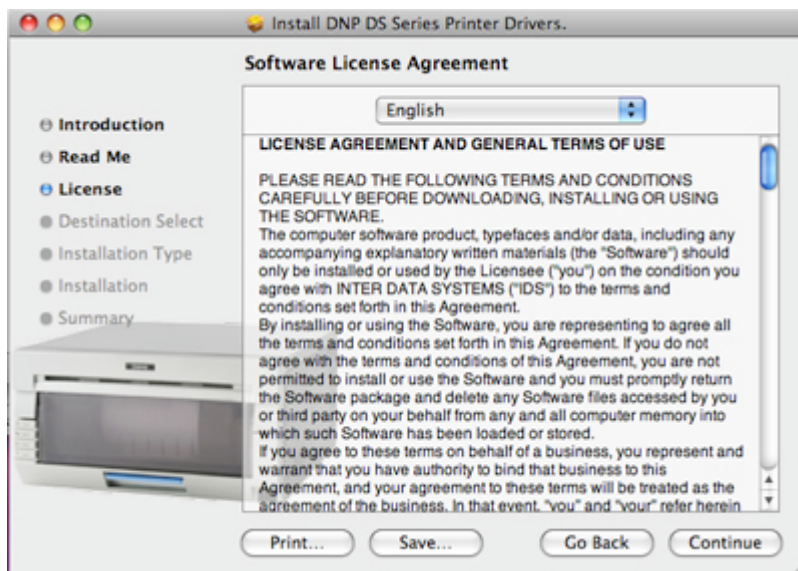
5. The installer opens. Click **Continue** to begin.



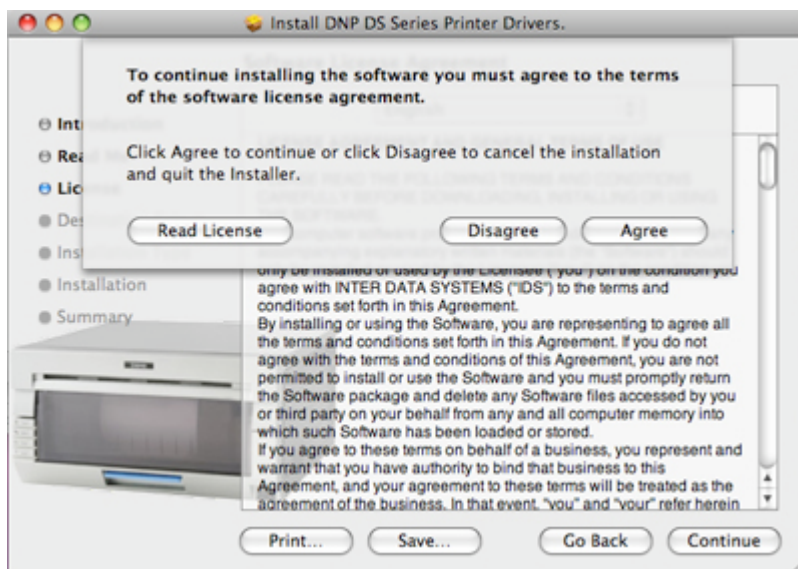
6. Read the important information on the screen. When you are done, click **Continue**.



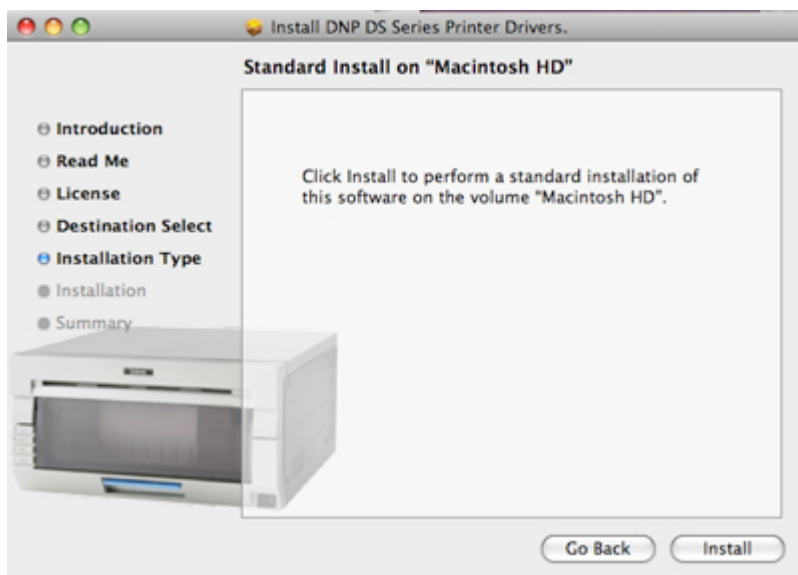
7. Read the through the Software License Agreement. When you are done, click **Continue**.



- When prompted, accept the license agreement terms by clicking **Agree**.



- At the next screen, click **Install**.



10. If your Mac operating system is password protected, enter your password when prompted. Click **OK**.



The installation process begins.

11. When the installation is complete, you receive the message *Install Succeeded*. Click **Close**.

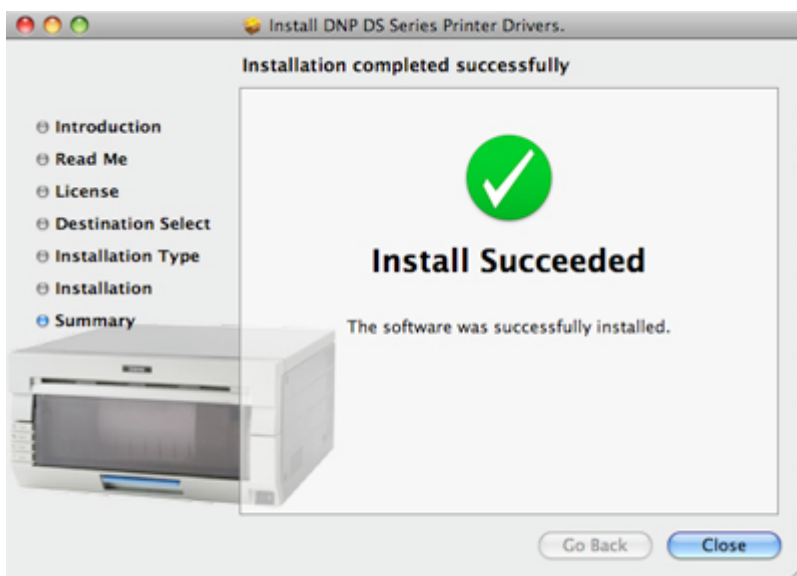


Figure 2. *Install Succeeded*



Note

When installing the new drivers, the default DNP ICC profiles are also installed. To change the ICC profiles, please see "Changing the ICC Profile" on page 35.

Turning ON the Printer

1. If it isn't already, turn the printer ON.
2. Plug the DNP printer USB cord into your Mac.
3. The printer should be added as a device automatically in about 1 minute.



Attention

Do NOT use the + sign to add the printer. If you see a + sign, you may already have another instance of the Mac printer driver installed on your system. If so, follow the instructions in step 5 in "Getting Started" on page 11, to remove the printer, then repeat the steps in this procedure.

Uninstalling the Driver

Follow this procedure to uninstall the printer drivers for DS/RX printers on Mac OS X.

1. Navigate to where you downloaded the **Mac OS-X Driver for DS40/DS80/RX1/DS620A/ DS80DX** file.



Note

If you no longer have the above mentioned file, please follow steps 1 - 4 in the "Installing the Driver" on page 11.

2. Copy the **Driver Package** file and **Driver Uninstaller** file to your desktop or a local folder on your Mac.
3. Double-click the **DNP Install.dmg** file.
4. In the next window, double-click the **DNP Uninstaller** icon.
5. The uninstall process begins.
6. Navigate through any subsequent windows that are displayed.



Note

Uninstalling the driver only uninstalls the current version. If you have multiple versions of the driver, you need to run the uninstall for each driver version.

Troubleshooting

- ❖ Make sure the printer is connected with a USB cable and powered ON. The lights on the printer should indicate a "Ready" status. (For more information on status lights, consult the DS/RX Printer User Manual.)

- ❖ If the printer is added, but you cannot print:

1. Turn the printer OFF. Go to **System Preferences > Print & Fax** and delete any DS/RX Printers listed.
2. Turn the printer ON and wait for the printer to add itself as a device.

If the printer does not automatically add itself to the printer list, use the + sign to add it in the **System Preferences > Print & Fax** dialog box.

Using the Mac Printer Driver for OS X

After installing your driver, you can use the DS or RX printers to print from your Mac. Use the procedures in this chapter to explore and use all of the features available with the Mac Printer Driver for OS X.



Note

The printer options screen may change slightly depending on the program from which you are printing. Graphic design programs like *Photoshop* or *Illustrator* may have extra settings which are not included in the examples below.



Attention

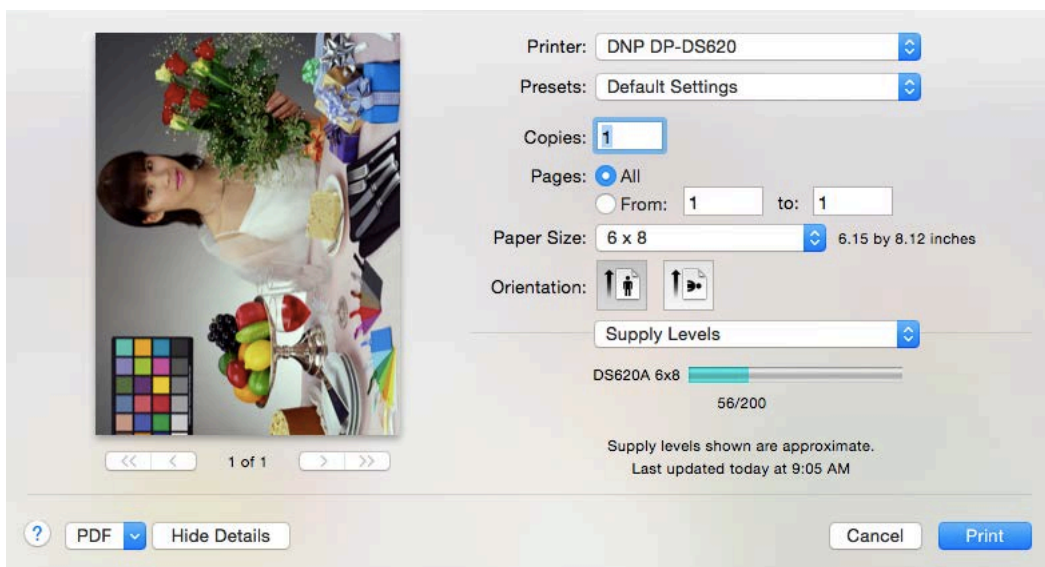
The DS40, DS80, DS620/DS620A, and RX1 printer control panels are all similar, but will present different sets of paper sizes for each respective printer.

Opening the Printer Preferences Window

The printer preferences window allows you to make changes to your printer settings. Use this window to change the DNP printer preferences as needed.

1. Open an image using a software application that does not alter the printer preferences window. An example of this type of software is the iPhoto software.
2. Click the **Print** button.

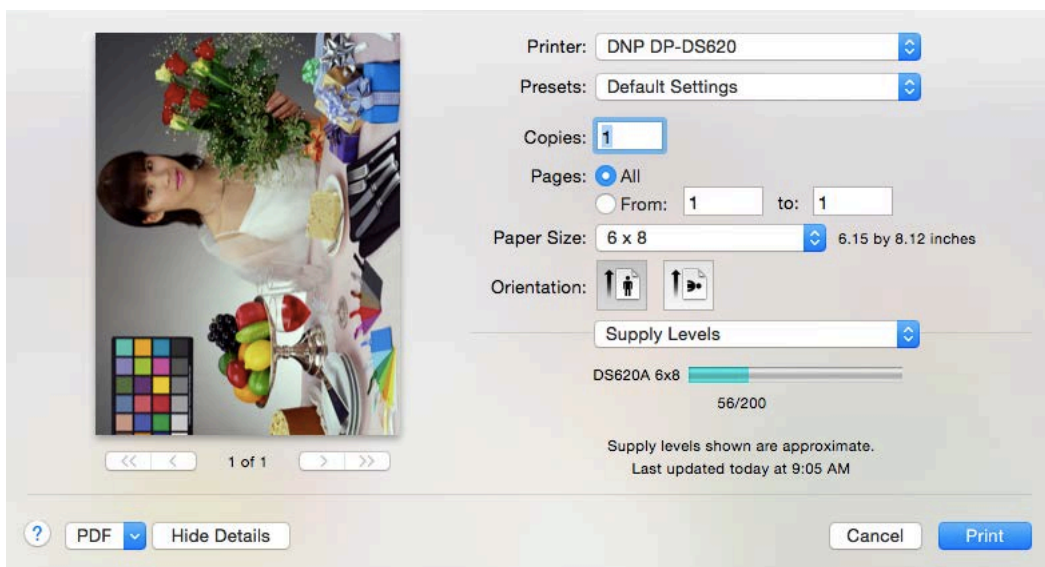
3. The printer preferences window opens.



Exploring the Standard Printer Options

The DNP printer features are located at the bottom portion of the overall printer options window.

1. The top portion of the printer options window remains the same for your selected printer. For the purposes of this manual, the top portion of the window is called the standard printer options.



2. Use the following table to identify the standard printer options in the top portion of the window.

Printer Option	Description
Printer*	Displays the selected printer. You can use the drop-down list to switch between printers.
Presets	Shows your preset options. This is usually set to "default" unless you have already set up presets on your system.
Copies	Displays the number of copies for each image in the print job.
Duplex (Two-Sided) Setting++	Duplex only option. Allows you to toggle between single sided and double sided printing.
Pages	Displays the pages you are printing. Can be set to all pages or specifying a certain page range.
Paper Size*	Lists all available print sizes for the selected printer (1).
Orientation	Toggles between landscape and portrait orientations.
Printer Settings List	Drop-down list to select your specific printer preferences. See the following sections for more information.

*Selecting a different printer, such as the DS80, DS80DX or RX1, changes some of the options (paper size).

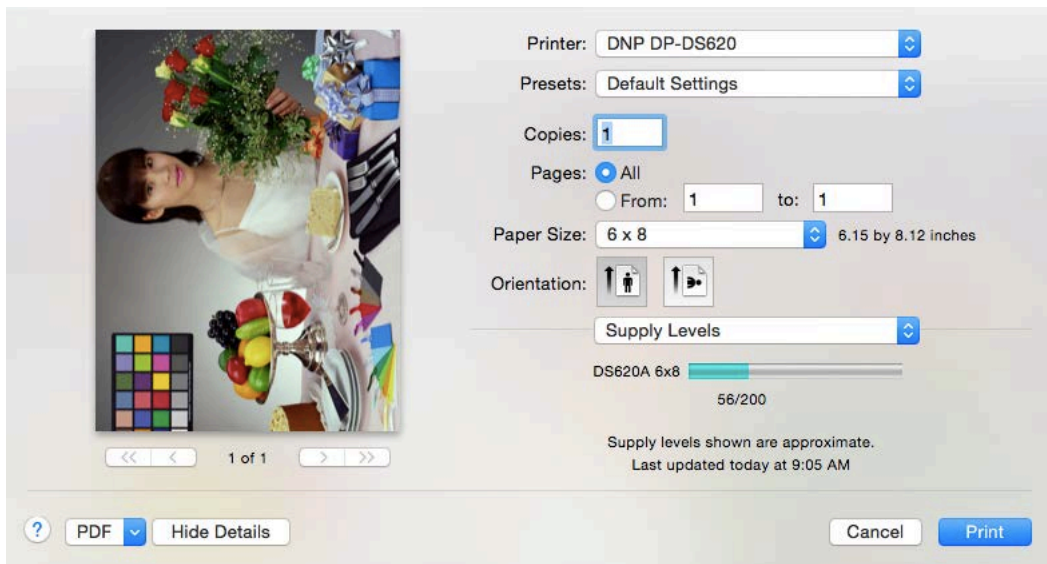
++ Only available with duplex printers.

About Paper Size

Use the paper size option to set your print size for your print job. The system automatically displays the available print sizes for your given paper size. If a print size cannot be found, the system uses the default paper size of 8.5" x 11". Setting your paper size ensures that your image is printed correctly.

About Orientation

When printing images, orientation is not always as straight forward as expected. Due to default settings when printing images, sometimes the portrait and landscape orientations appear to be reversed.



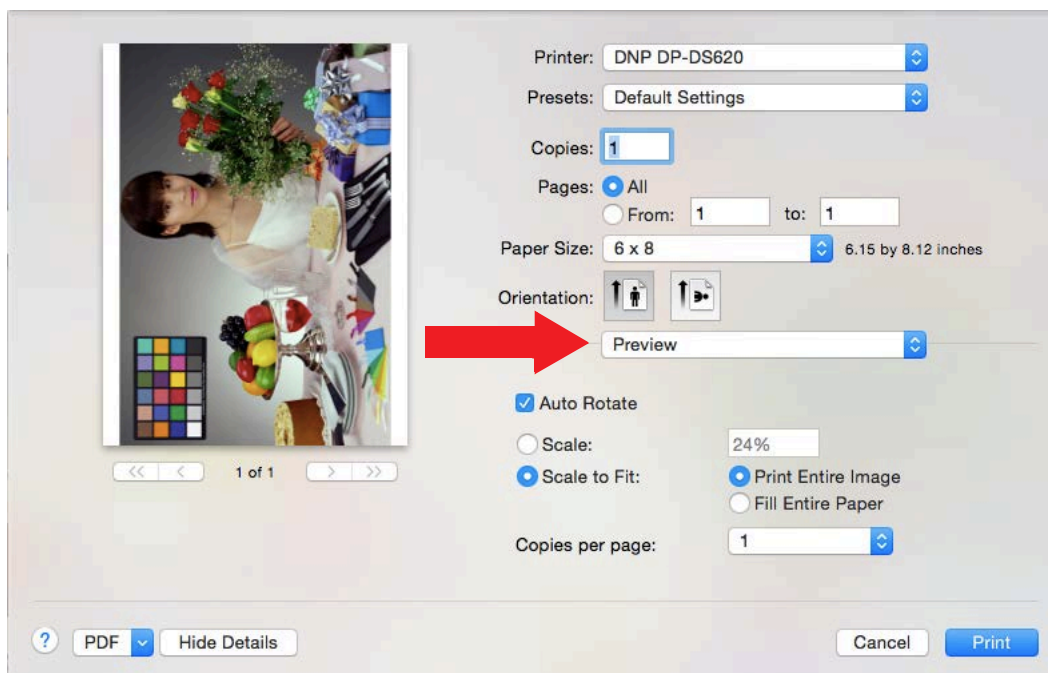
The default image orientation depends on the paper you have loaded in your printer. 5" and 8" paper automatically flip images to portrait mode while 6" paper automatically flips images to landscape mode. These automatic adjustments allow for the largest image possible within the selected print size. This can be confusing when starting with different image orientations. Adding to this, image EXIF and meta data can also impact orientation when printing.

For best results, always set the paper size first, and then set your image scaling (using the preview panel). Also, always leave the automation rotation set to ON (checked). By doing these actions, your system will automatically adjust your image to the correct orientation for your printer paper and scale the image to fit within the print size.

If you are having issues with incorrect orientations and you have checked your print size, scaling, and automation rotation, use the portrait and landscape options to adjust your image orientation. However, if you have properly set your other print actions, this step should not be necessary. Keep in mind that forcing an image orientation can cause severe cropping of an image. Images are set to certain aspect ratios, and forcing an orientation change will cause the image to be cropped severely.

Exploring the Preview Print Options

The preview print options appear below the standard print options when you change the **Printer Settings** drop-down menu to **Preview**.



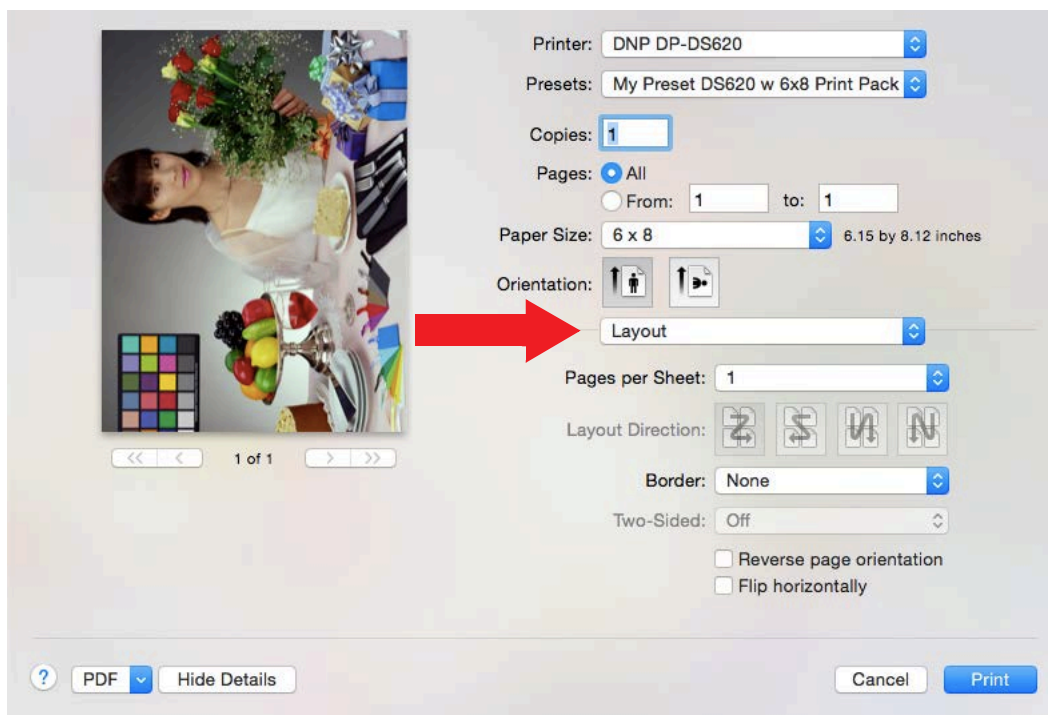
The preview print options are most commonly used to set your print orientation (rotation), scaling, and copy options. To learn more about the standard printer options, see “Exploring the Standard Printer Options” on page 18.

Printer Option	Description
Preview Window	Thumbnail shown to the left of the screen. Shows a preview of your image as it will be printed.
Auto Rotate	Do not change this option unless you are having issues with image orientation when printing. This setting automatically rotates the image to the proper orientation when printing to photo paper.
Scale	Sets a percentage for scaling an image.
Scale to Fit	Scales the image to fit either by fitting the image across multiple sheets, or by scaling the image to print within the print size selected.
Copies per page	Set the number of copies for all of the images within your print job.

For more information about preview settings, see your Mac documentation.

Exploring the Layout Options

The layout print options appear below the standard print options when you change the **Printer Settings** drop-down menu to **Layout**.



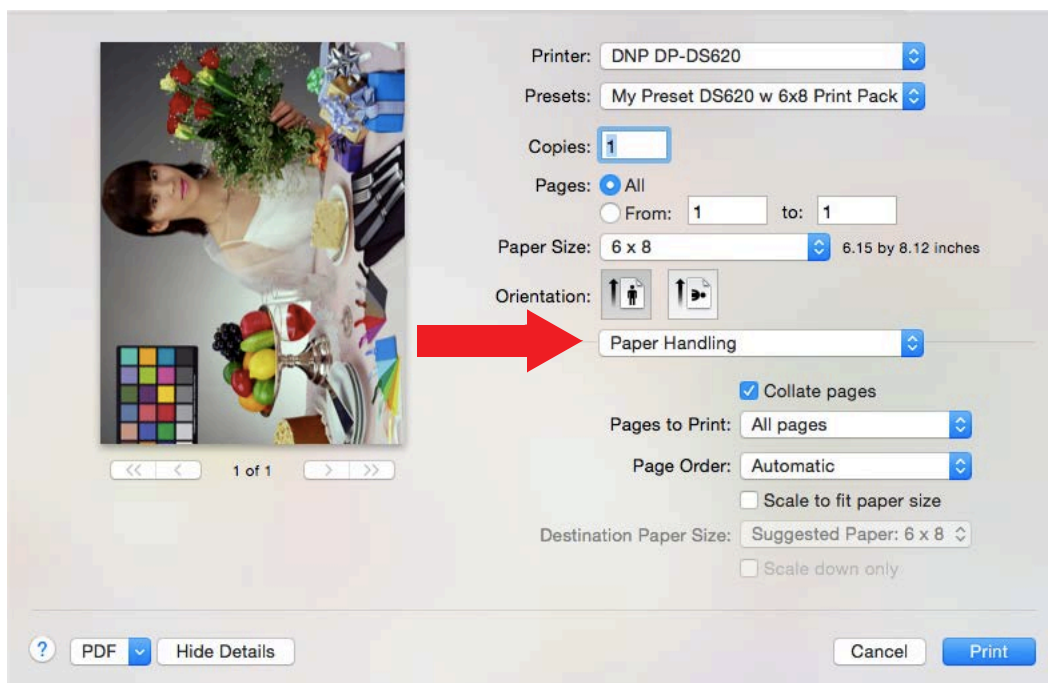
The layout print options are most commonly used to update your settings when printing multiple images on the same page. To learn more about the standard printer options, see “Exploring the Standard Printer Options” on page 18.

Printer Option	Description
Preview Window	Shows a preview of your image as it will be printed.
Pages per Sheet	Changes the number of images that will print per sheet of media.
Layout Directions	Selects how you want multiple images printed on each sheet.
Border	Adds a preset border around the entire print sheet.
Two Sided	Duplex option only. Sets or removes duplex printing capabilities.
Reverse page orientation	Prints the images upside down.
Flip horizontally	Flips the images horizontally.

For more information about layout settings, see your Mac documentation.

Exploring the Paper Handling Options

The paper handling options appear below the standard print options when you change the **Printer Settings** drop-down menu to **Paper Handling**.



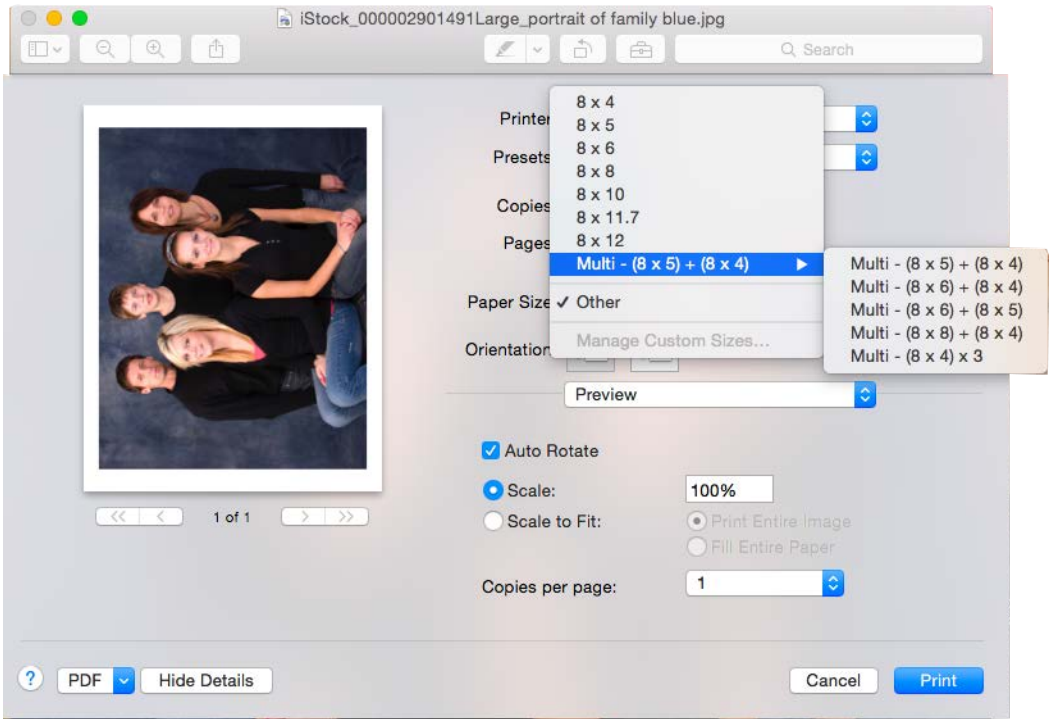
The paper handling options are most commonly used to change the collation, pages to print, and other common paper/sheet options. To learn more about the standard printer options, see "Exploring the Standard Printer Options" on page 18.

Printer Option	Description
Preview Window	Shows a preview of your image as it will be printed.
Collate Pages	Prints pages collated (1, 2, 3, 1, 2, 3) or chronologically (1, 1, 2, 2, 3, 3).
Pages to Print	Selects either all pages or a subset of pages to print (odd, even, specific page range, etc.).
Page Order	Switches the print job order.
Scale to fit paper size	Scales the image to fit on the selected paper size.
Destination Paper Size	Displays the default paper size for your printer.
Scale down only	Limits scaling to less than 100%.

For more information about paper handling settings, see your Mac documentation.

Exploring the Multi-Cut Functionality for DS80 and DS820

You now have the ability to use the multi-cut functionality with your DS80 and DS820 printers.



Here are the applicable size:

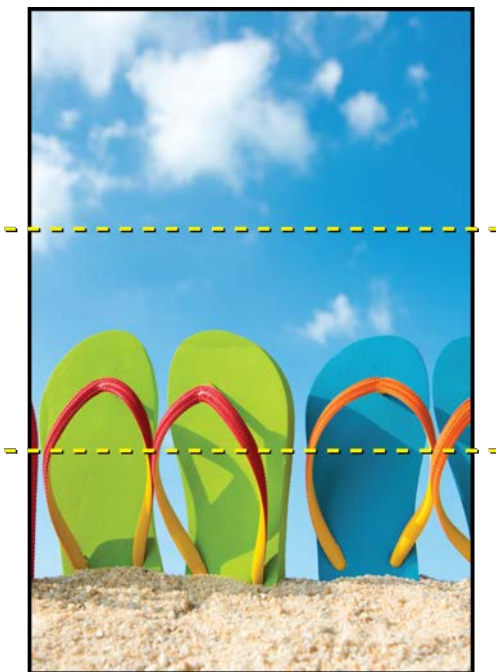
	Media Size	Media Size
Multi Cut Combo	8x10	8x12
(8x5) + (8x4)	✓	✓
(8x6) + (8x4)	✓	✓
(8x6) + (8x5)	-	✓
(8x8) + (8x4)	-	✓
(8x4) x 3	-	✓

✓ = Multi-Cut Printing Possible

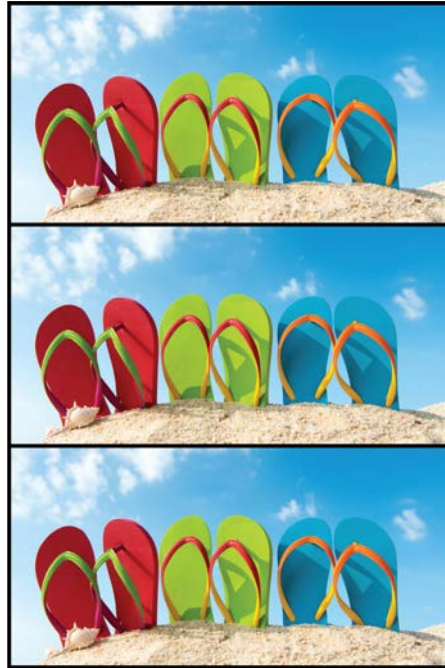
As an example, if you have 8x12 media installed in your printer and you select **Multi - (8x8) + (8x4)** from the **Paper Size** drop-down menu, the printer cuts your images as follows:



For 8x10 and 8x12 multi-cuts, you need to use a photo editing application to manipulate your image in order to fill the entire canvas. For example, if you select **Multi - (8x4) x 3** from the **Paper Size** drop-down menu, and you do NOT manipulate your images to fill the canvas, your image is cut as follows:



If you arrange your images properly using your photo editing application, your image is cut as follows:



Note

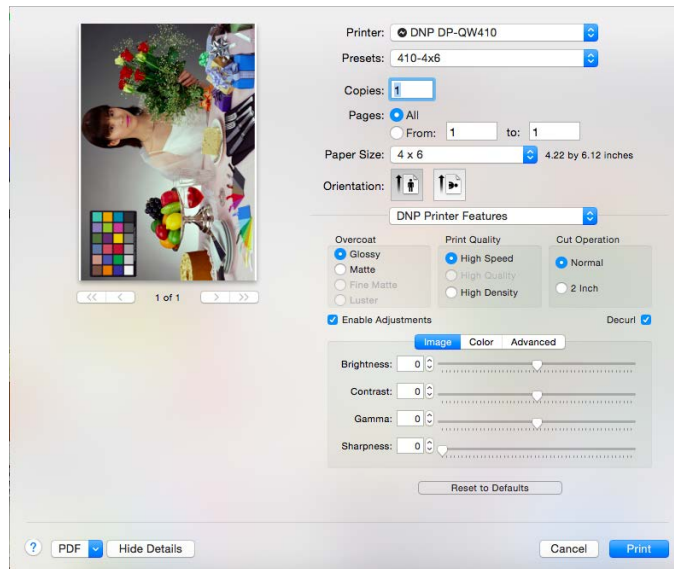
To make multiple copies of 8x4 photos that can be scaled by the driver, use the standard **Paper Size 8x4** and select the appropriate copy quantity; in this example, selecting 3 copies will cover the full 8x12 page. Don't use the **Multi - (8x4) x 3** selection unless you have positioned the images on the full 8x12 canvas area using your photo editing application.

Exploring the QW410 Printer

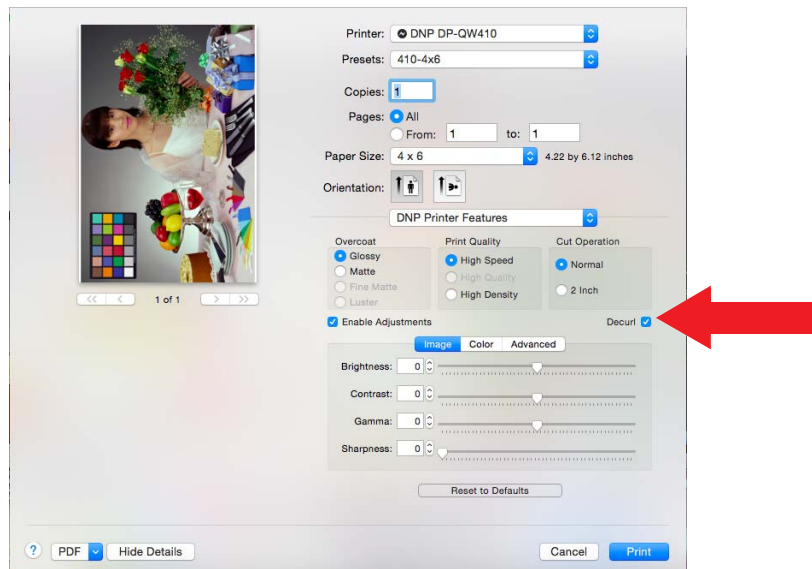
The QW410 printer allows you to print a variety of print sizes (see list below.) This printer is also equipped with a mechanism that reduces the curl of the print.

Activating the Decurling functionality

1. From the **Print Properties** screen, select **DNP DP-QW410** from the **Printer** drop-down menu.



2. Select your **Presets**, **Copies**, and **Paper Size**.
3. Under the **Cut Operation** section, select the **Decurl** checkbox.



4. Set your **Image** and **Color** properties as needed.
5. Click the **Print** button.

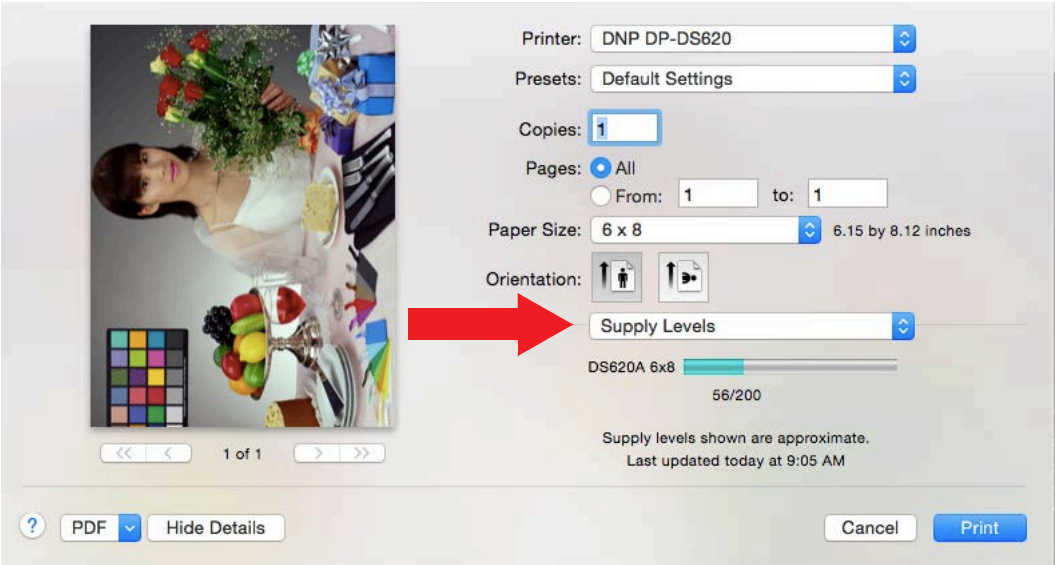
QW410 Print Sizes

You can print your images in the following sizes:

- ◆ 4 x 4
- ◆ 4 x 6
- ◆ 4.5 x 4.5
- ◆ 4.5 x 8

Exploring the Supply Level Options

Change the **Printer Settings** drop-down menu to **Supply Levels** to check how many ribbon panels are left on the currently selected printer.



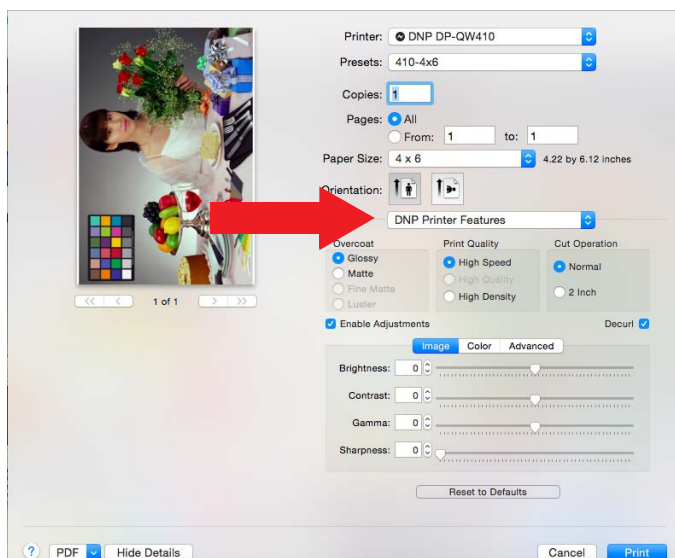
To learn more about the standard printer options, see “Exploring the Standard Printer Options” on page 18.

Printer Option	Description
Preview Window	Shows a preview of your image as it will be printed.
Images Remaining	Displays the number of remaining images.

For more information about the supply level options, see your Mac user documentation.

Opening the DNP Printer Options

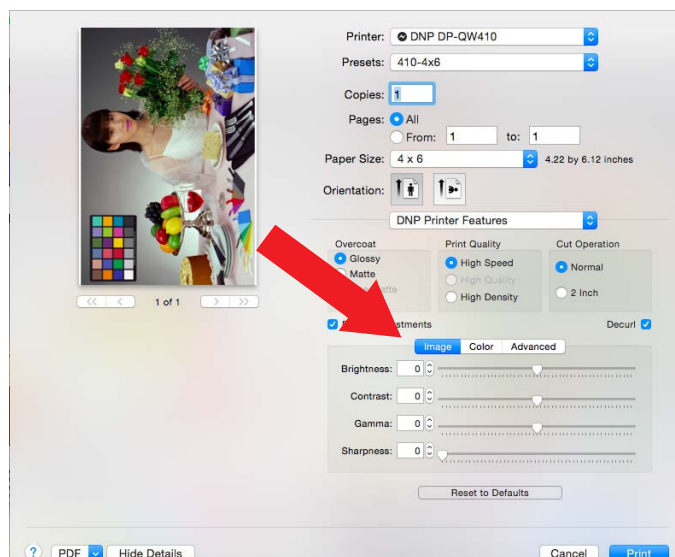
1. If you haven't already, open the printer options window.
2. From the **Printer Settings** drop-down menu, select the **DNP Printer Features** option. This opens the DNP Printer Features panels.
3. By clicking the **Image**, **Color**, or **Advanced** buttons, you can toggle between the **Image**, **Color**, or **Advanced** panels.
4. Use the following procedures to learn more about each of the option panels.



Changing the Image Settings

Use the table below to identify the settings available on the DNP Printer Features Image panel.

1. Make sure the **Images** button is highlighted to view the image panel options.



To learn more about the standard printer options, see "Exploring the Standard Printer Options" on page 18.

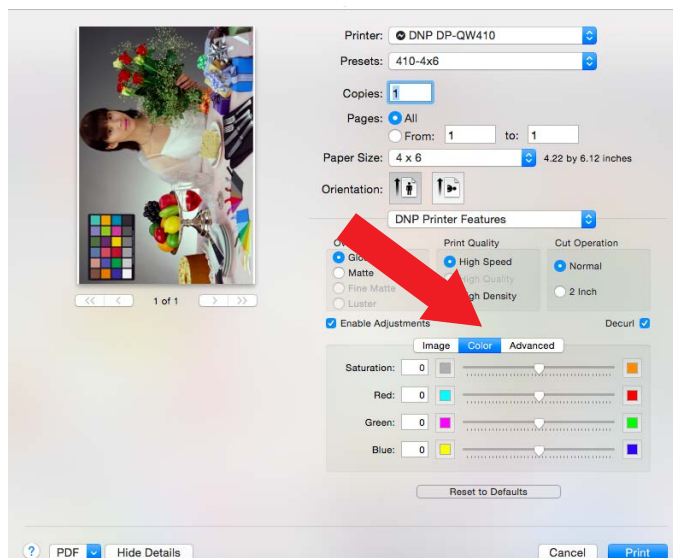
Printer Option	Description
Preview Window	Shows a preview of your image as it will be printed.
Overcoat type: Glossy/Matte	Switch between glossy or matte print finishes.
Print Quality	Switch between high speed prints, or high quality prints.
Cut Operation*	Switches between sheet or rolled paper inputs (duplex printer). Also allows for 2" cuts on printers where that option is supported.
Brightness	Adjusts the brightness of the image.
Contrast	Adjusts the contrast of the image.
Gamma	Adjusts the gamma settings.
Sharpness	Adjusts the image sharpness settings.
Overcoat Duplex Setting+ +	Duplex only option. Applies the glossy or matte print finish to duplex prints.
Enable Adjustments	Allows for image panel adjustments.

*Selecting a different printer, such as the DS80 or DS80D or RX1, changes some of the options (paper size).

+ + Only available with duplex printers.

Changing the Color Settings

Use the settings on the DNP Printer Features **Color** panel to change color attributes of your images. Any changes you make are applied to all images that are printed during that print session. Changes are saved between sessions and can be altered at any time.



To learn more about the standard printer options, see “Exploring the Standard Printer Options” on page 18.

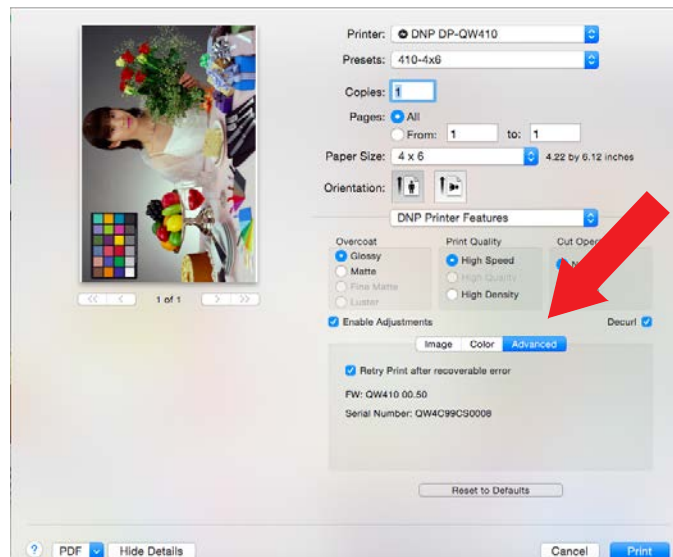
Printer Option	Description
Preview Window	Shows a preview of your image as it will be printed.
Overcoat type: Glossy/Matte	Switches between glossy or matte print finishes.
Print Quality	Do not change this option. Prints the image at 300x300 DPI.
Cut Operation*	Switches between sheet or rolled paper inputs (duplex printer). Also allows for 2" cuts on printers where that option is supported.
Enable Adjustments	Allows for image panel adjustments.
Overcoat Duplex Setting+ +	Duplex only option. Applies the glossy or matte print finish to duplex prints.
Saturation levels	Adjusts the image saturation levels.
Color Controls (Red/Green/Blue)	Adjusts the color settings for all images you are printing.

* Selecting a different printer, such as the DS40, changes some of the options (paper size, duplex) accordingly.

+ + Only available with duplex printers

Using the Advanced Settings

By clicking the **Advanced** button, you can turn on a feature to re-print the last photo if the media runs out during printing. (Available only with printer firmware version 1.30 or higher.) You can also view the printer driver firmware version.



To learn more about the standard printer options, see “Exploring the Standard Printer Options” on page 18.

Printer Option	Description
Preview Window	Shows a preview of your image as it will be printed.
Overcoat type: Glossy/Matte	Switches between glossy or matte print finishes.
Print Quality	Do not change this option. Prints the image at 300x300 DPI.
Cut Operation*	Switches between sheet or rolled paper inputs (duplex printer). Also allows for 2" cuts on printers where that option is supported.
Enable Adjustments	Allows for image panel adjustments.
Overcoat Duplex Setting++	Duplex only option. Applies the glossy or matte print finish to duplex prints.
Retry printing after recoverable error	Reprints the images that are still in the printer buffer if the printer enters an error state.
Firmware version	Displays the firmware version.

* Selecting a different printer, such as the DS40, changes some of the options (paper size, duplex) accordingly.

++ Only available with duplex printers

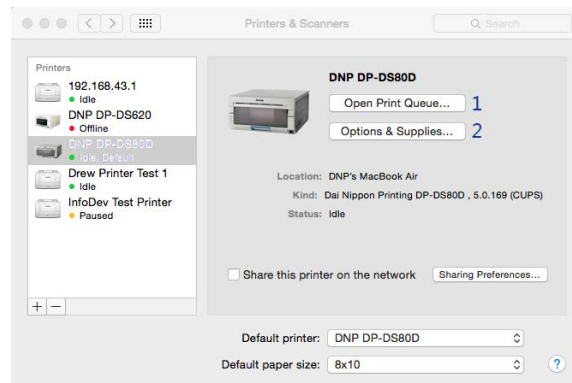
About Retry Printing

Retry printing allows you to reprint the images that are still in the printer buffer if the printer enters an error state. While not all errors can trigger a reprint, if the error state is considered recoverable, the printer buffer is reprinted once the printer returns to the ready state. If the feature is not enabled, the printer buffer is cleared when an error occurs. Use the table below for reviewing additional information regarding printer error conditions.

Printer Error	If Retry Printing is Disabled	If Retry Printing is Enabled
Paper End	Images in the printer buffer are not reprinted	Images in the printer buffer are reprinted once the error condition is cleared.
Ribbon End		
Cover Open		
Paper Jam		
Ribbon Error		
Paper Definition Error		
Scrap Box Error		
Data Error	Error requires a printer reboot, which clears the print buffer. Images must be resent to the printer.	Error requires a printer reboot, which clears the print buffer. Images must be resent to the printer.
Head Voltage Error		
Head Position Error		
Power Supply Fan Stop		
Cutter Error		
Abnormal Head Temp.		
Abnormal Media Temp.		
Ribbon Tension Error		
RFID Module Error		
Abnormal motor Temp.		
System Error		

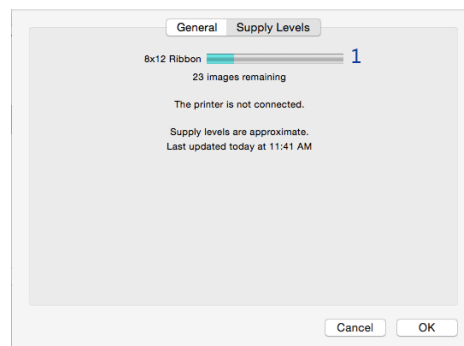
Viewing the Printers and Scanners Preferences

If you are viewing the printer preferences, use the options below.



Number	Description
1	Opens the print queue.
2	Opens a new window with supply level information and driver version information.

- Pressing the **Options & Supplies** button opens the printer preferences window.



- You can use the **Supply Levels** panel to view the approximate remaining ribbon amounts.
- Use the **General** panel to view the current firmware version.

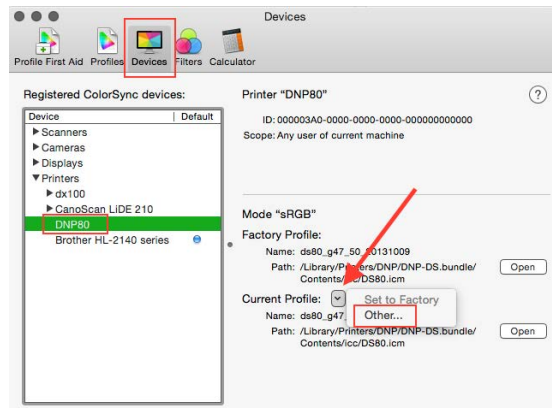
Changing Default Printer Settings

If you want to change any of your default printer settings such as your default print size (4x6 or 2" cuts), default print finish (matte/glossy), or any of your color settings, you must do so using CUPS, or *Common UNIX Printer Service*. CUPS is a web-based application that simplifies the printer management interface. CUPS is part of OS X. For more information on changing your default printer settings, please consult your Mac user documentation or the Apple support website.

Changing the ICC Profile

Use the following procedure to change the ICC profile assigned to your printer.

1. From Finder, select **Applications** and then select **Utilities**.
2. Select **ColorSync Utility**.
3. Click the **Devices** header.
4. Select the **DNP** printer for which you wish to change the ICC profile.
5. From the **Current Profile** drop-down menu, select **Other**.



6. Select the desired ICM file.
7. Click **Open**.
8. The new ICC profile is now displayed.

Supported Print Sizes

Use the following table to view available print sizes for each printer and media type. Mac Printer Driver for OS X only displays the available print sizes for the loaded media, i.e., for a 6" printer that has 4"x6" media loaded, only 4"x6" and 3.5"x5" sizes are displayed.

		Standard Print Sizes															
Model	Media	2x6	4x6_2IN	6x8_2IN	3.5x5	4x4	4x6	4.5x4.5	4.5x6	4.5x8	5x7	6x8	6x9	8x8	8x10	8x12	A4
DS40	3.5x5		M		S												
	4x6				ST		S										
	5x7				S		ST				S						
	6x8	M			ST		M				ST	S					
	6x9	M			ST		M				ST	S	S				
RX1\RX1-HS	4x6		M		ST		S										
	5x7				S		ST				S						
	6x8			M	ST		M				ST	S					
DS620	4x6	M	M		ST		S										
	5x7				M		ST				S						
	6x8	M	M	M	MT		M				ST	S					
	6x9	M	M	M	MT		M		M		ST	S	S				
DS80	8x10						MT				MT	S		S	S		
	8x12						MT				MT	M		S	S	S	
DS820	8x10						MT				MT	S	ST	S	S		
	8x12						MT				MT	M	ST	S	S	S	S
DS80DX	8x10						MT				MT	S	ST	S	S		
	8x12						MT				MT	M	ST	S	S	S	
QW410	4x6					M	M										
	4.5x8							M		M							

Model	Media	Panoramic Prints						Duplex 1-Up				Duplex Multi	
		5x14	5x20	8x18	8x22	8x26	8x32	8x10D	8x10.5D	8x10.75D	8x12D	8x4x3	8x6x2D
DS40	3.5x5												
	4x6												
	5x7												
	6x8												
	6x9												
RX1\RX1-HS DS620	4x6												
	5x7												
	6x8												
	4x6												
	5x7												
	6x8	S	S										
	6x9	S	S										
DS80	8x10												
	8x12												
DS820	8x10			S		S							
	8x12				S		S						
DS80DX	8x10							S	S	S			
	8x12							S	S	S	S	M	M
QW410	4x6												
	4.5x8												

S	M	ST	MT	*
Single Cut	Multi Cut	Single Cut, req. Trimming	Multi Cut, req. Trimming	Avail. by folder transfer only

iSerial Tool



Attention

This tool is meant to be used on the DS620/620A and RX-series printers only. No other DNP printers require this update. (DS820/820A printers already have the correct iSerial firmware installed from the factory.)

Installing this tool for use with any other printer can cause driver malfunctions and void your warranty. The iSerial Tool is considered to be in beta release.

About the iSerial Tool

The DNP iSerial Tool is used to enable the iSerial functionality within the printer firmware. This facilitates proper functionality with the Mac driver for OS X 10.9.4 and later. The DNP dye sublimation printers used on Mac OS 10.9.4 and later may experience the following known issues when using the DNP IAM printer driver:

- ❖ A single attached printer will not reflect an accurate status in the driver.
- ❖ When two printers of like configuration (same media loaded) are attached, the driver will recognize the first printer attached. The other printer will show offline.

This is due to the fact that the printer cannot report its serial number to the operating system. The printer has the ability to report its serial number; however, it is shipped from the factory with this option disabled in the firmware. The iSerial Enable Tool is used to enable the iSerial functionality within the printer firmware. This facilitates proper functionality with the Mac driver for OS-X 10.9.4 and later, correcting the issues listed above.

The tool can be downloaded from the DNP Photo website at <http://www.dnpphoto.com/Support/Downloads/DriversTools.aspx>. It is located in the Printer Drivers for Mac section. Once the file is downloaded, extract the compressed files before use. Installation instructions are included in the downloaded file and are shown below.

Enabling iSerial Functionality

To enable the iSerial functionality with your printers:

1. Connect and turn your printer(s) on.



Attention

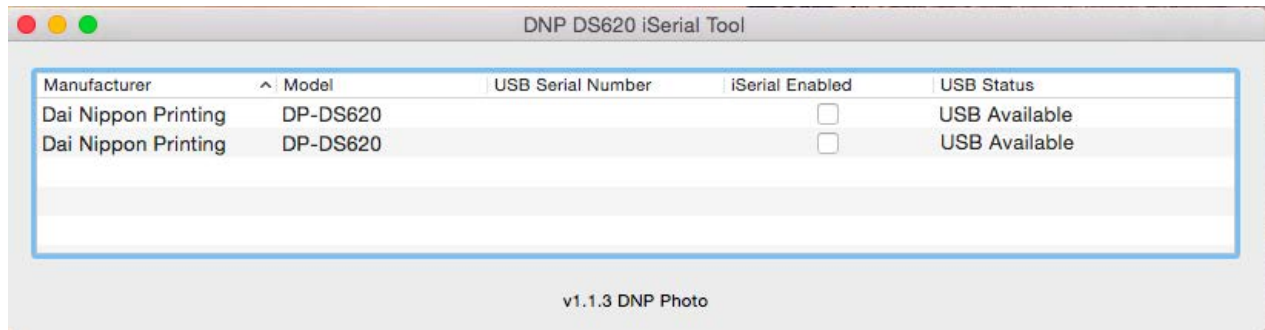
Your printer(s) must be powered on for the tool to recognize/update them. The iSerial Enable Tool can recognize up to five (5) DNP printers simultaneously. You may use the DNP iSerial Tool with or without having the Mac driver installed.

2. Unzip the DNP iSerial Tool.

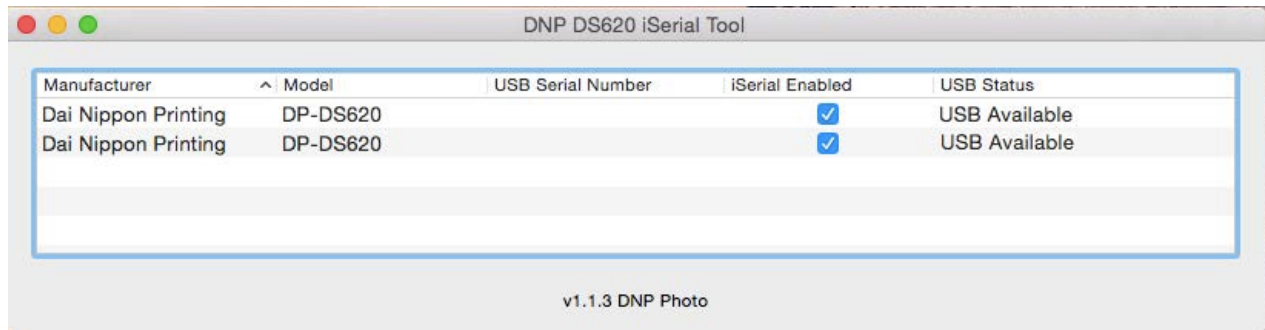


3. Once unzipped, double-click the tool's icon.

- Upon opening, the tool is populated with information associated with your printers, including the USB Serial Number of your printer(s) and whether the iSerial functionality is enabled/disabled. The USB Serial Number will not appear if the iSerial functionality is not enabled.



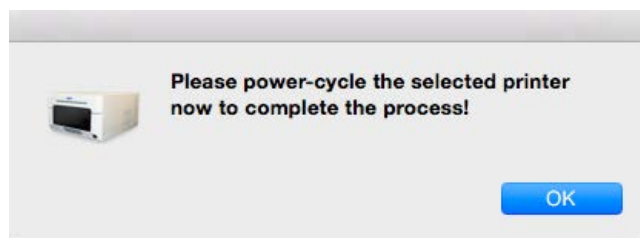
- To enable your printers, select the **iSerial Enabled** checkbox for each printer.



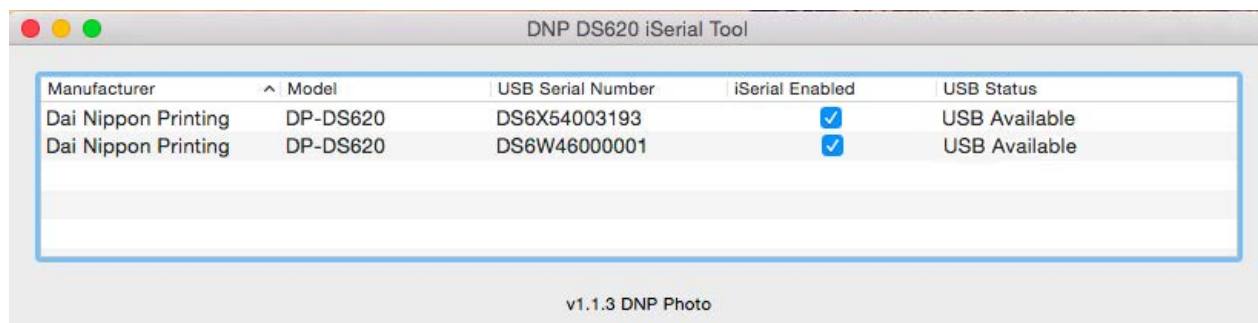
Note

Before selecting the **iSerial Enabled** checkbox, your printer(s) must be available, i.e. not printing images, etc. To verify that your printer is available, check the **Status** column in the iSerial Enable Tool.

- Upon selecting the **iSerial Enabled** checkbox, you are prompted to reboot your printer(s). Turn your printer off, and then turn it back on. Then click **OK** on the dialog box.



7. Repeat steps 5 and 6 for each printer.



Note

If you deselect the **iSerial Enabled** checkbox, the iSerial functionality is disabled for the associated printer.

8. Once the appropriate changes have been made, close the iSerial Enable Tool before sending images to the printers.

Changing Languages

To change the language displayed in the DNP iSerial Tool, you need to do so from the **Language & Region** screen, which is accessed through the OS-X **System Preferences** screen on your Mac PC.

DNP Imagingcomm America Corporation

4524 Enterprise Drive NW

Concord, NC 28027

1-855-367-7604 or (724) 696-8957

www.dnpphoto.com

www.dnpimagingcomm.com
